

# CSO SPEC SHEET

Structure #: REG 035 B

Date: 09/11/2012  
Insp. By: AK & AH

Location: At the Intersection of Maxfield St and Pleasant St.

Structure Type: Brick Weir Wall

Regulator Type: Block Regulator

Structure DIM's: \_\_\_\_\_

Weir Dim's: \_\_\_\_\_

Size of Sewer Pipe: 24"

Rim to Weir Wall: 5.5'

Size of Storm Drain Pipe: 24"

Rim to Storm Drain Invert: \_\_\_\_\_

Sewer Direction: West to East

Rim to Top of Sewer (Normal Flow): 6.2'

Free Board: 0.7'

Over All Rating: (Circle One)

Poor

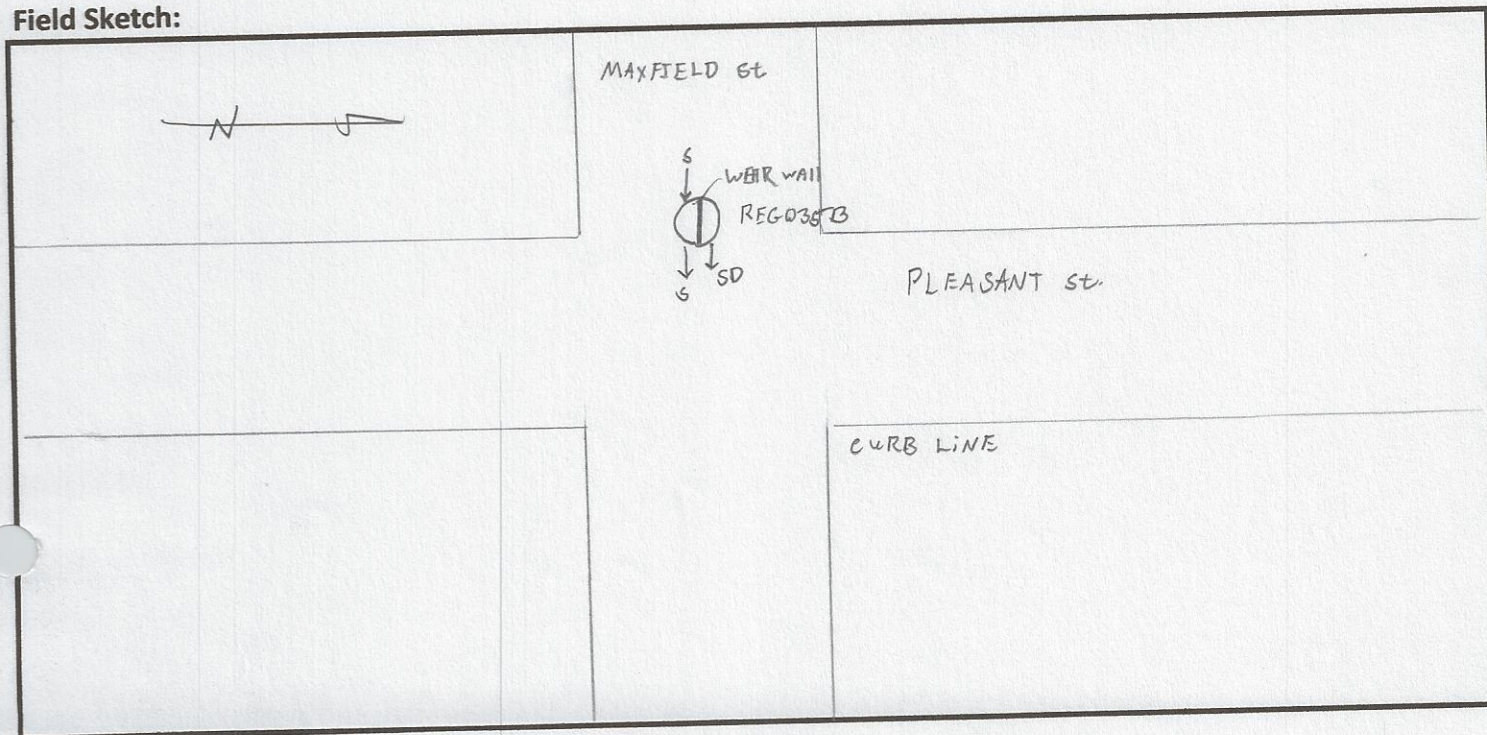
Fair

Good

Excellent

Comments: No Repairs Needed.

## Field Sketch:





## CSO FIELD PHOTOS

Structure#: REG 035 B

Location: At the Intersection of Maxfield St and Pleasant St.

Figure 1.



Figure 2.

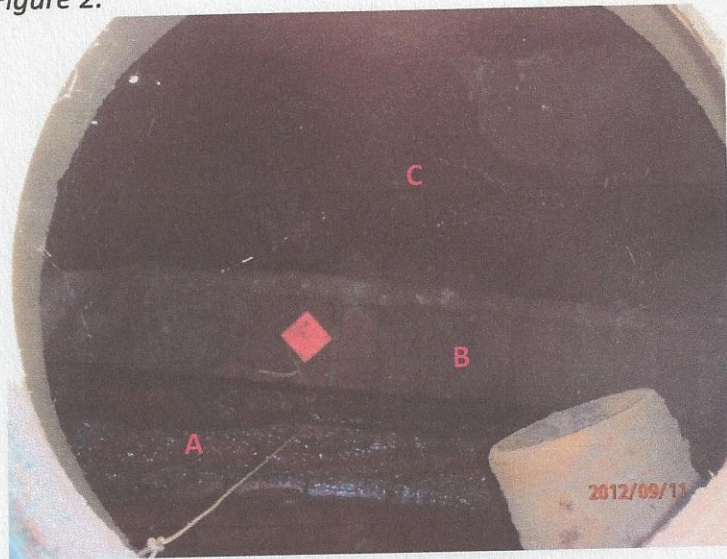
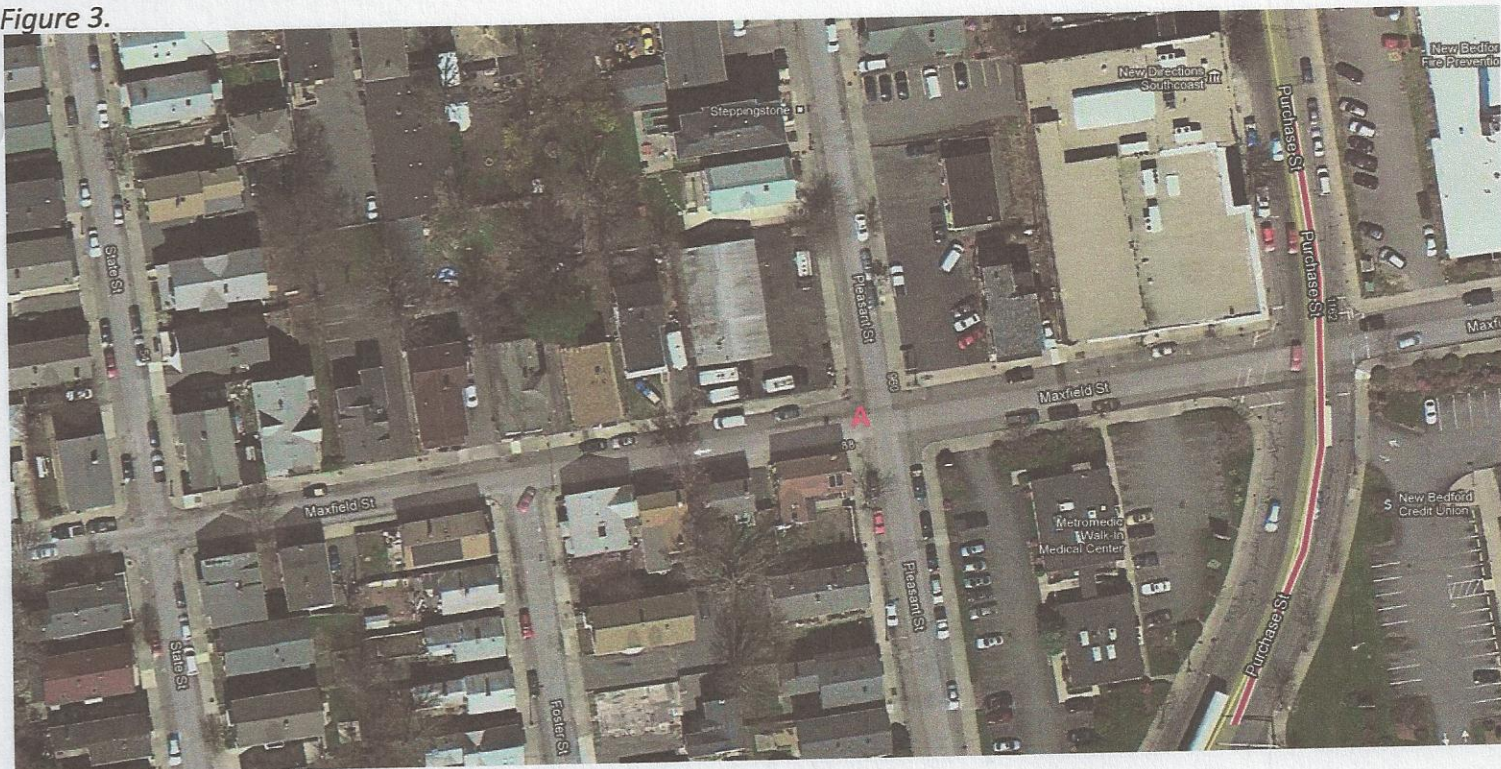


Figure 3.



### Descriptions

Figure 1: View of Regulator 035 B. Facing North-East.

Figure 2: Inside view of manhole. A- Sewer; B- Weir Wall; C- Storm Drain.

Figure 3: Google Earth Image of location of Regulator 035 A. A- Reg 035 B.



LMAN

4084-97

6062-01

DIG UP  
1980

FOSTER STREET

STREET

6219-01

1882-95  
Relay 2412-06

3170-96

DEAN RAY  
HILLMAN

20649-82

Relay by  
City 1981  
No permit

20549-80

1579-05

MAXFIELD

4794-98

Relay 132-40

11190-21

21163-86

977  
DIG UP  
5-10-65

PLEASANT

12" SEWER

Regulator 35 B

13252-24

PURCHASE

36" S.D.  
12" SEWER

20492-80

20491-80

6" A.C. 20491-80  
20492-80

24" S.D.  
12" SEWER

FORMER S.M.

1702-05

6069-01

STREET

N.B.  
CREDIT UNION  
20528-81

CITY HALL

STRI



## CSO/Regulator Repair Log

Structure #: Reg 035B

[illegible]