

# CSO SPEC SHEET

Structure #: REG 035 A

Date: 09/11/2012  
Insp. By: AK & AH

Location: At the Intersection of Hillman St and Foster St.

Structure Type: Concrete Weir Wall

Structure DIM's: \_\_\_\_\_

Size of Sewer Pipe: 24"

Size of Storm Drain Pipe: 24"

Sewer Direction: West to East

Regulator Type: Block Regulator

Weir Dim's: \_\_\_\_\_

Rim to High Level Outfall: 6.3'

Rim to Storm Drain Invert: \_\_\_\_\_

Rim to Top of Sewer (Normal Flow): 7.0'

Free Board: 0.7'

Over All Rating: (Circle One)

Poor

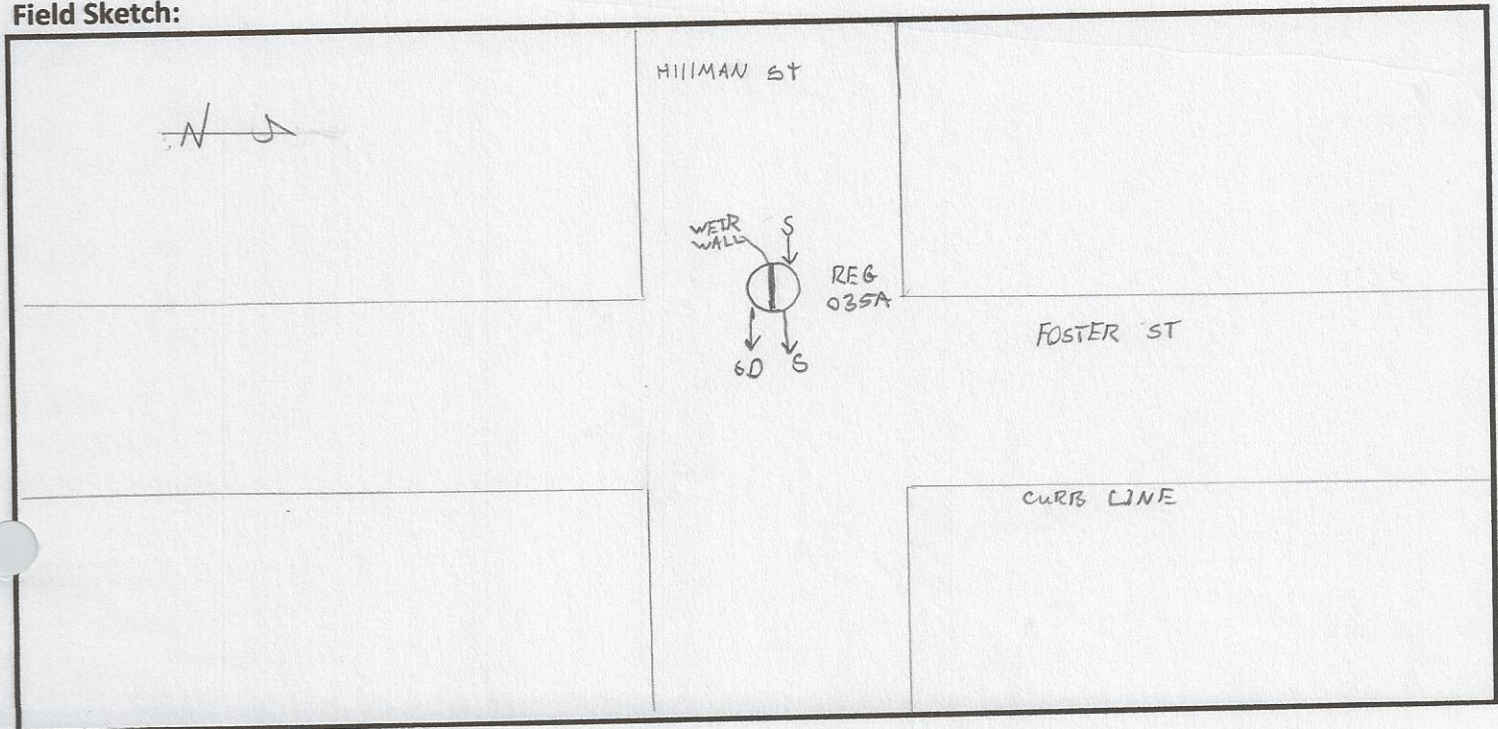
Fair

Good

Excellent

Comments: No Repairs Needed.

## Field Sketch:





## CSO FIELD PHOTOS

Structure#: REG 035 A

Location: At the Intersection of Hillman St and Foster St.

Figure 1.



Figure 2.

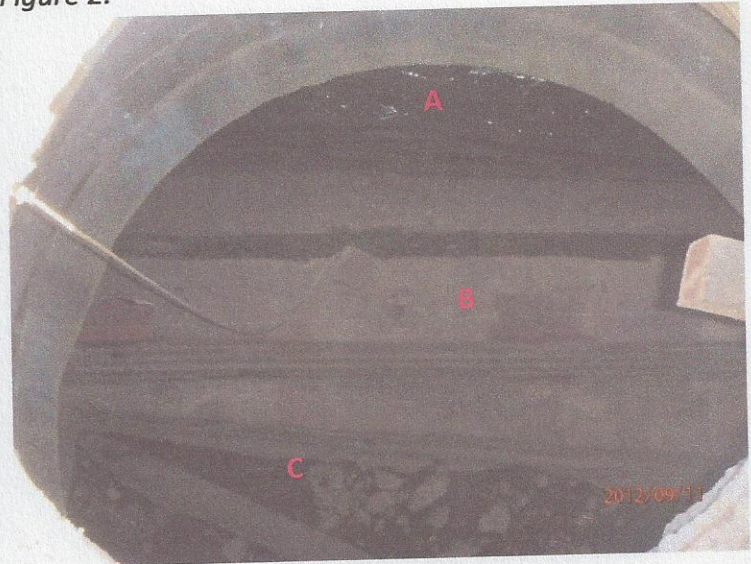


Figure 3.



### Descriptions

Figure 1: View of Regulator 035 A. Facing North. A- REG 035 A.

Figure 2: Inside view of manhole. A- Sewer; B- Weir Wall; C- Storm Drain.

Figure 3: Google Earth Image of location of Regulator 035 A. A- Reg 035 A.



HILLMAN

Regulator 35 A

4084-97

6082-01

DIGUP  
1980

FOSTER

STREET

6219-01

SEWER 24" R.A.S.K.

4794-98

Relay 132-40

11190-21

MAXFIELD

3170-96

1682-93  
Relay 2412-06

20549-80

1579-05

Relay by  
City 1981  
No permit

20649-82

PLEASANT

12" SEWER

24" S.D.  
12" S.

21163-8

13252-24

PURCHASE

36" S.D.  
12" SEWER

20492-80

20491-80

6" A.C. 20491-80  
20492-80

12" SEWER  
24" S.D.

FOR

1702-05



## CSO/Regulator Repair Log

Structure #: Reg OBSA

[illegible]