

New Bedford, Ma

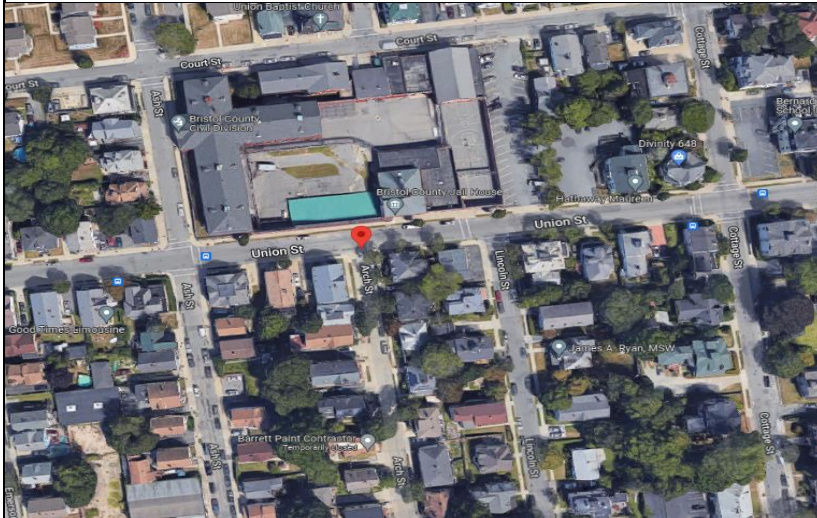


Site I.D.

Flow Monitoring Site Installation Report

034A

Site Address / Location:	Union St at Arch St	Monitor Series	ECHO	Location Type	Temporary
Site Access:	Drive	Pipe Size (H x W)	6.50x6.50	Pipe Shape	Circular



Manhole #	System Characteristics
Access	Commercial
Drive	Traffic
	None



Installation Information	
Installation Date:	Installation Type:
Tuesday, July 26, 2022	Level Only
Monitoring Location (Sensors):	Monitor Location:
Sensors / Devices:	Manhole
ECHO Depth	Pressure Sensor Range (psi)

Installation Confirmation:	
Confirmation Time:	Pipe Size (HxW)
3:35:00 PM	6.50x6.50
Depth of Flow (Wet DOF) (in)	Range (Air DOF) (in)
Downlooker Physical Offset (in)	Measurement Confidence (in)
Peak Velocity (fps)	Velocity Sensor Offset (in)
Silt (in)	Silt Type
0	



Hydraulic Comments:

Manhole / Pipe Information:	
Manhole Depth (Approx. In):	Manhole Configuration
83.5	CSO Flow Divider
Manhole Material:	Manhole Condition:
Brick	Good
Manhole Opening Diameter (in)	Manhole Diameter (Approx.):
Manhole Cover	Manhole Frame
Concealed	Normal
Active Drop Connections	Air Quality:
Pipe Material	Good
Brick	Pipe Condition:
	Good

Communication Information:	
Communication Type	Antenna Location
Wireless	Drilled Pavement / Concrete

Additional Site Info. / Comments:

ADS Project Name:	New Bedford, Ma
ADS Project Number:	32673.52