

# CSO SPEC SHEET

Structure #: REG 032 C

Date: 09/04/2012  
Insp. By: AK

Location: At the Intersection of Walnut St and Acushnet Ave.

Structure Type: Cast in Place

Regulator Type: Block Reg

Structure DIM's: \_\_\_\_\_

Weir Dim's: \_\_\_\_\_

Size of Sewer Pipe: 24"

Rim to High Level Outfall: 7.5'

Size of Storm Drain Pipe: 30"

Rim to Storm Drain Invert: \_\_\_\_\_

Sewer Direction: East to South

Rim to Top of Sewer (Normal Flow): 8.2'

Free Board: 0.7'

Over All Rating: (Circle One)

Poor

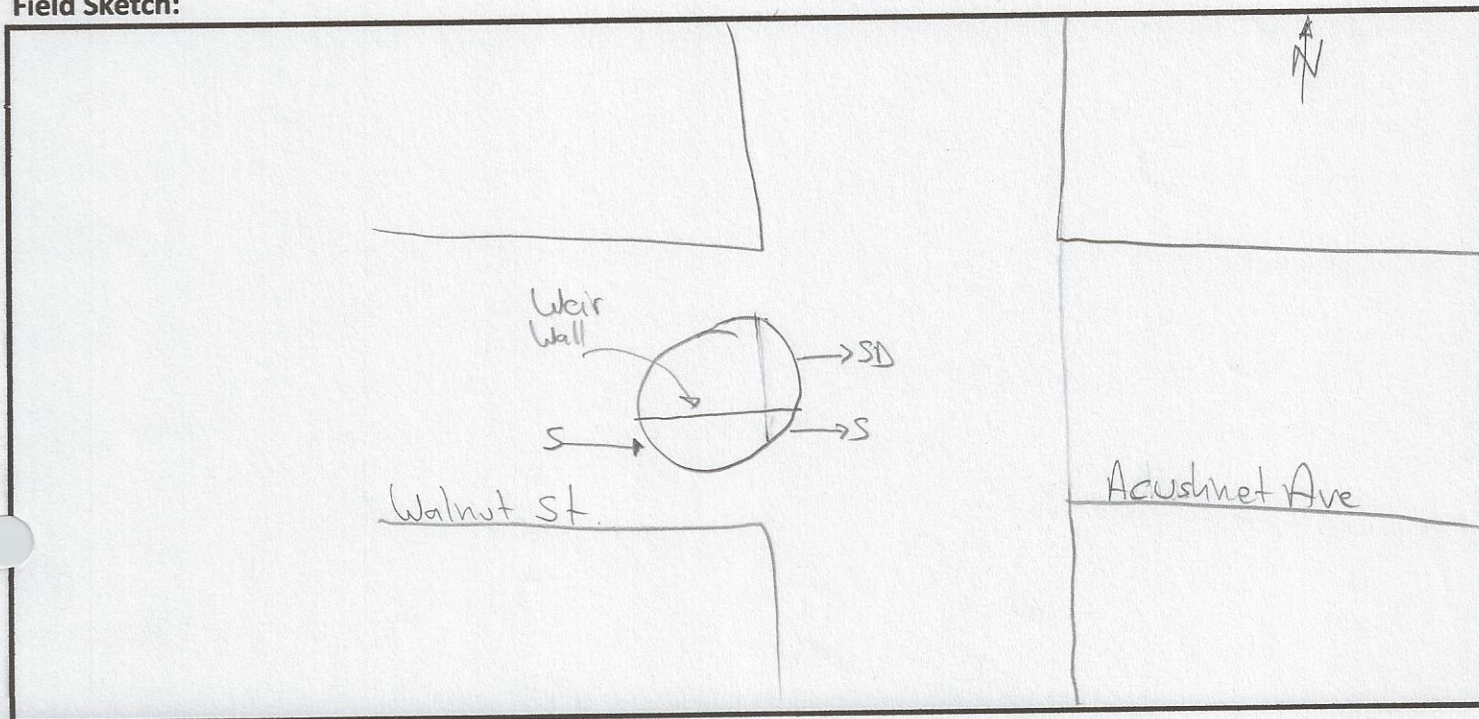
Fair

Good

Excellent

Comments: No Repairs Needed.

Field Sketch:



## CSO FIELD PHOTOS

Structure#: REG 032 C

Location: At the Intersection of Walnut St and Acushnet Ave.

Figure 1.



Figure 2.

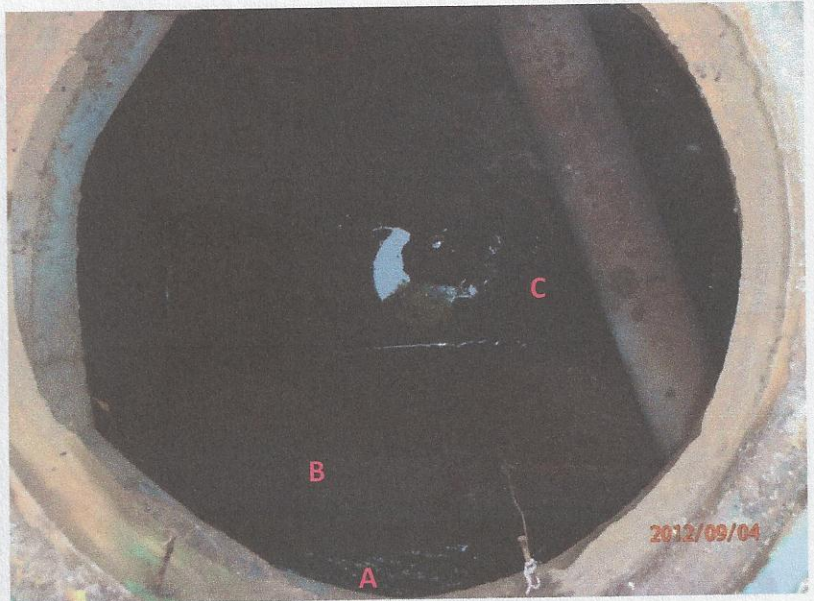
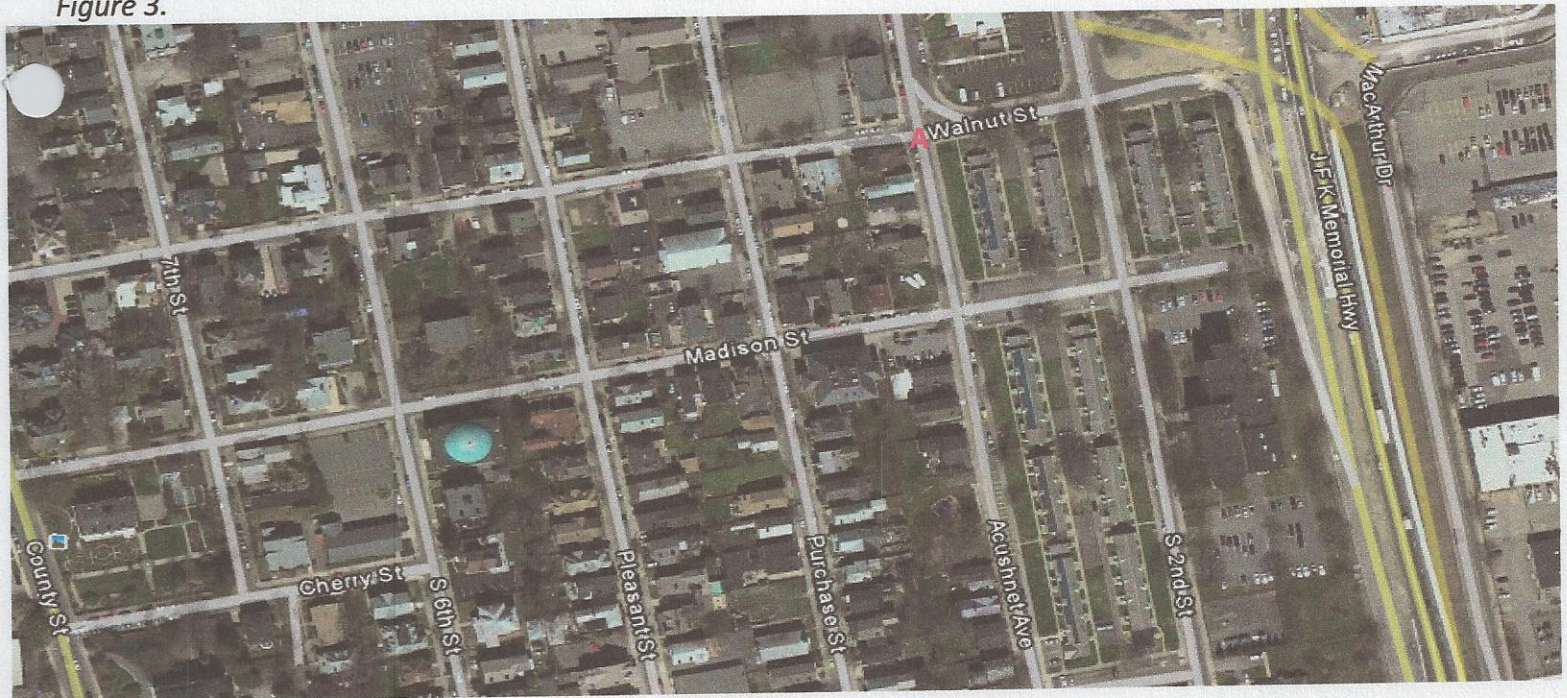


Figure 3.



### Descriptions

Figure 1: View of Regulator 032 C. Facing East.

Figure 2: Inside view of manhole. A- Sewer; B- Weir Wall; C- Storm Drain.

Figure 3: Google Earth Image of location of Regulator 032 C. A- Reg 032 C

AGE

197

94 92 90 88 86

93

182

LAG

177

259 257

263

259

Relay - 28

Relocation  
1962

Regulator 32 C

RELAID 1994

87

72

72.1

671

WALNUT

02

30" STORM DRAIN

10" SEWER

30" STORM DRAIN

10" SEWER

10" SEWER

10" SEWER

UNDER  
NOT

60-21  
60-51

## CSO/Regulator Repair Log

Structure #: Reg 032C

[illegible]