

CSO SPEC SHEET

Structure #: REG 032 A

Date: 09/04/2012

Insp. By: AK

Location: At the Intersection of Cannon St and Second St.

Structure Type: Cast in Place

Regulator Type: Block Reg

Structure DIM's: _____

Weir Dim's: _____

Size of Sewer Pipe: 24"

Rim to High Level Outfall: 4.9'

Size of Storm Drain Pipe: 36"

Rim to Storm Drain Invert: _____

Sewer Direction: East to South

Rim to Top of Sewer (Normal Flow): 6.1'

Free Board: 1.2'

Over All Rating: (Circle One)

Poor

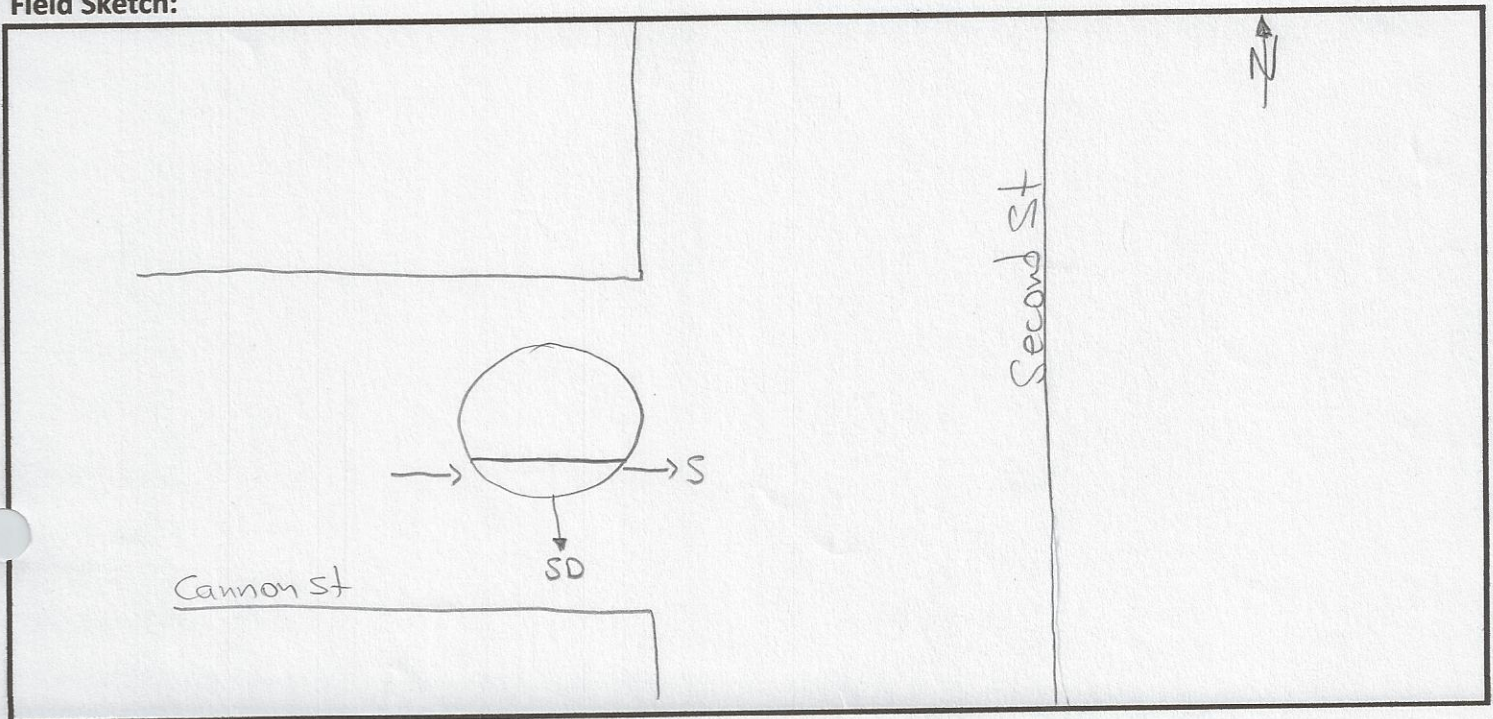
Fair

Good

Excellent

Comments: No Repairs Needed. Double Decker System. When sewer overflows it goes underneath the concrete Block.

Field Sketch:



CSO FIELD PHOTOS

Structure#: REG 032 A

Location: At the Intersection of Cannon St and Second St.

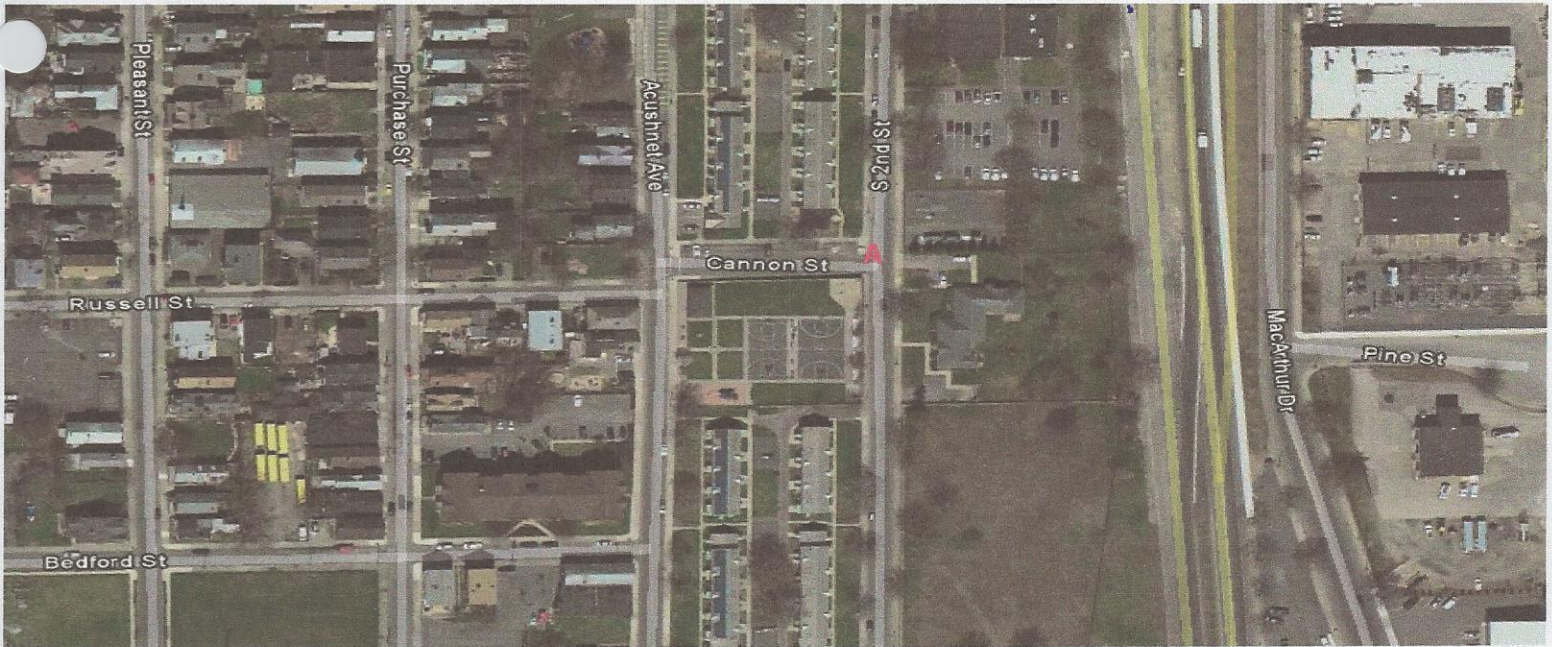
Figure 1.



Figure 2.



Figure 3.

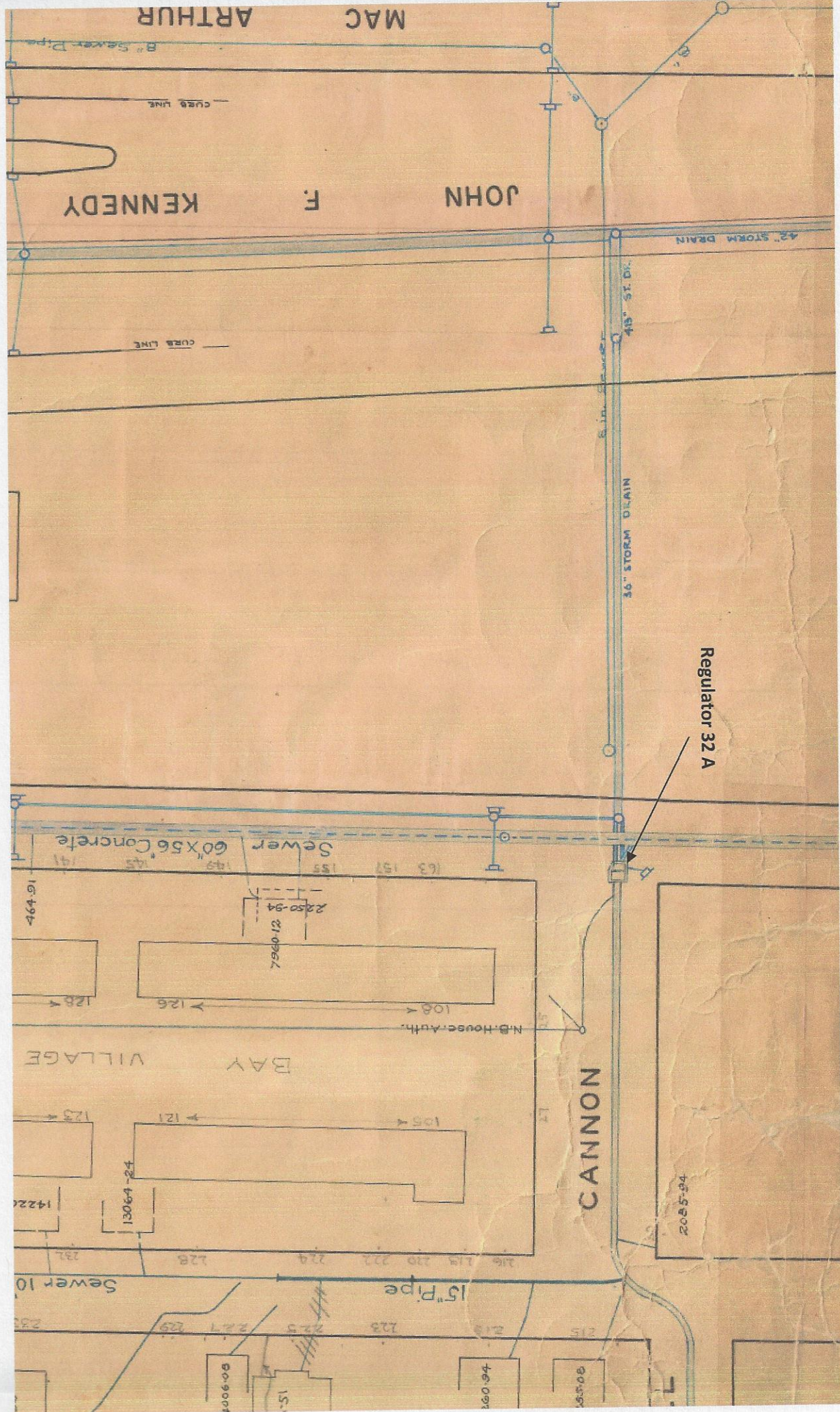


Descriptions

Figure 1: View of Regulator 032 A. Facing North.

Figure 2: Inside view of manhole. A- Sewer; B- Weir Wall; C- Storm Drain.

Figure 3: Google Earth Image of location of Regulator 032 A. A- Reg 032 A



Regulator 32 A

CANNON

15" Pipe

Sewer 10"

BAY VILLAGE

N.B. House Auth.

Sewer 60"x56" Concrete

JOHN F. KENNEDY

MAC ARTHUR

CURB LINE

CURB LINE

42" STORM DRAIN

36" STORM DRAIN

48" ST. DR.

8 in. Sewer

8" Sewer Pipe

464.91

128.4

125.4

1422.6

232

233

1306.4-24

1422.6

232

233

2350-94
7960.12

108.4

126

121

125.4

224

225

227

229

157

149

145

141

137

133

129

125

121

117

113

109

105

101

97

93

89

85

81

77

73

69

65

61

57

53

49

45

41

37

33

29

25

21

17

13

9

5

1

0

-1

-2

-3

-4

-5

-6

-7

-8

-9

-10

-11

-12

-13

-14

-15

-16

-17

-18

-19

-20

-21

-22

-23

-24

-25

-26

-27

-28

-29

-30

-31

-32

-33

-34

-35

-36

-37

-38

-39

-40

-41

-42

-43

-44

-45

-46

-47

-48

-49

-50

-51

-52

-53

-54

-55

-56

-57

-58

-59

-60

-61

-62

-63

-64

-65

-66

-67

-68

-69

-70

-71

-72

-73

-74

-75

-76

-77

-78

-79

-80

-81

-82

-83

-84

-85

-86

-87

-88

-89

-90

-91

-92

-93

-94

-95

-96

-97

-98

-99

-100

-101

-102

-103

-104

-105

-106

-107

-108

-109

-110

-111

-112

-113

-114

-115

-116

-117

-118

-119

-120

-121

-122

-123

-124

-125

-126

-127

-128

-129

-130

-131

-132

-133

-134

-135

-136

-137

-138

-139

-140

-141

-142

-143

-144

-145

-146

-147

-148

-149

-150

-151

-152

-153

-154

-155

-156

-157

-158

-159

-160

-161

-162

-163

-164

-165

-166

-167

-168

-169

-170

-171

-172

-173

-174

-175

-176

-177

-178

-179

-180

-181

-182

-183

-184

-185

-186

-187

-188

-189

-190

-191

-192

-193

-194

-195

-196

-197

-198

-199

-200

-201

-202

-203

-204

-205

-206

-207

-208

-209

-210

-211

-212

-213

-214

-215

-216

-217

-218

-219

-220

-221

-222

-223

-224

-225

-226

-227

-228

-229

-230

-231

-232

-233

-234

-235

-236

-237

-238

-239

-240

-241

-242

-243

-244

-245

CSO/Regulator Repair Log

Structure #: Reg 032A

[illegible]