

New Bedford Regulator Specification Sheet

Regulator #: R-031E

Location: MacArthur Drive north of Conway St. by Howland Street Pump Station

Date: 6/25/25

Structure Measurements

Structure Type: Single manhole

Rim Elevation (ft City Datum): 6.6

Regulator Type: High Level Outlet

Overflow Height (ft or in): 8.9

Rim to Top of Weir (ft): 8.9 (invert of 20" opening)

Weir Dims (ft or in): 20" pipe 8.9 ft. above inlet elevation

Influent pipe ø (in): 10,24

Rim to Influent Invert (ft): 12.7 (10"), 13.7 (24")

Dry Weather Connection ø (in): 24

Rim to Dry Weather Invert (ft): 13.7

Overflow pipe ø (in): 20

Rim to Overflow Invert (ft): 4.8

Sensor Measurements

Block Present: No

Level Sensor Status: Not Metered

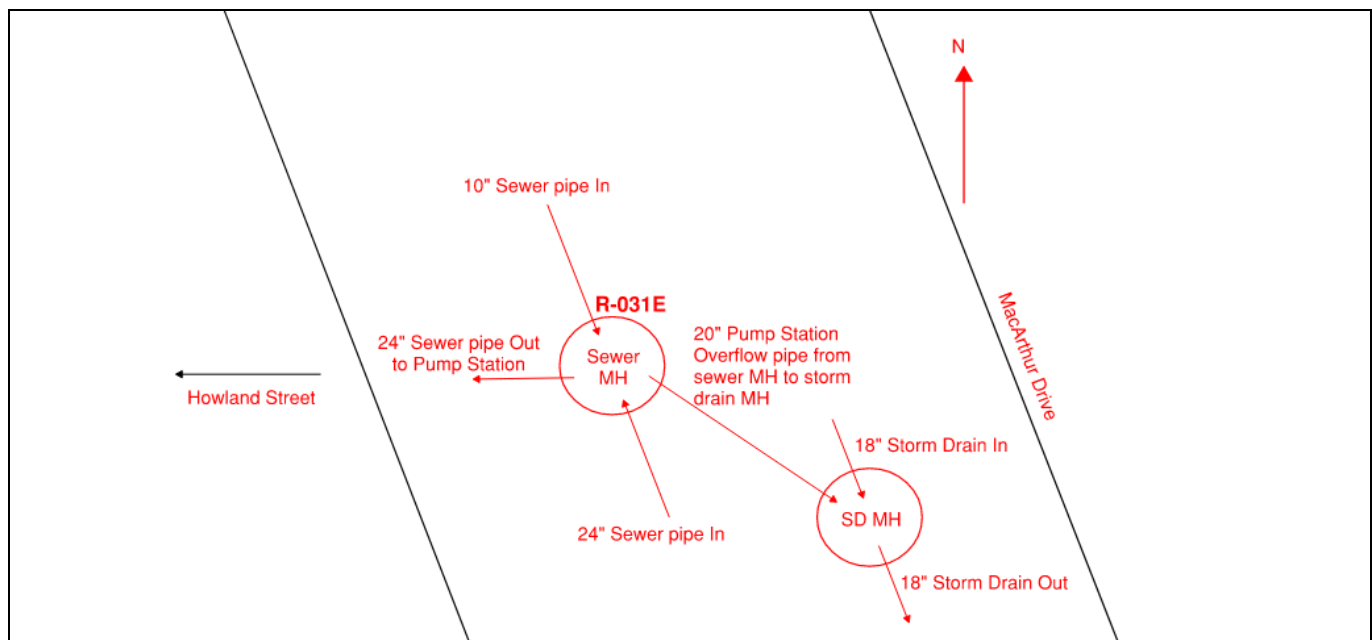
Sensor Installation Date: n/a

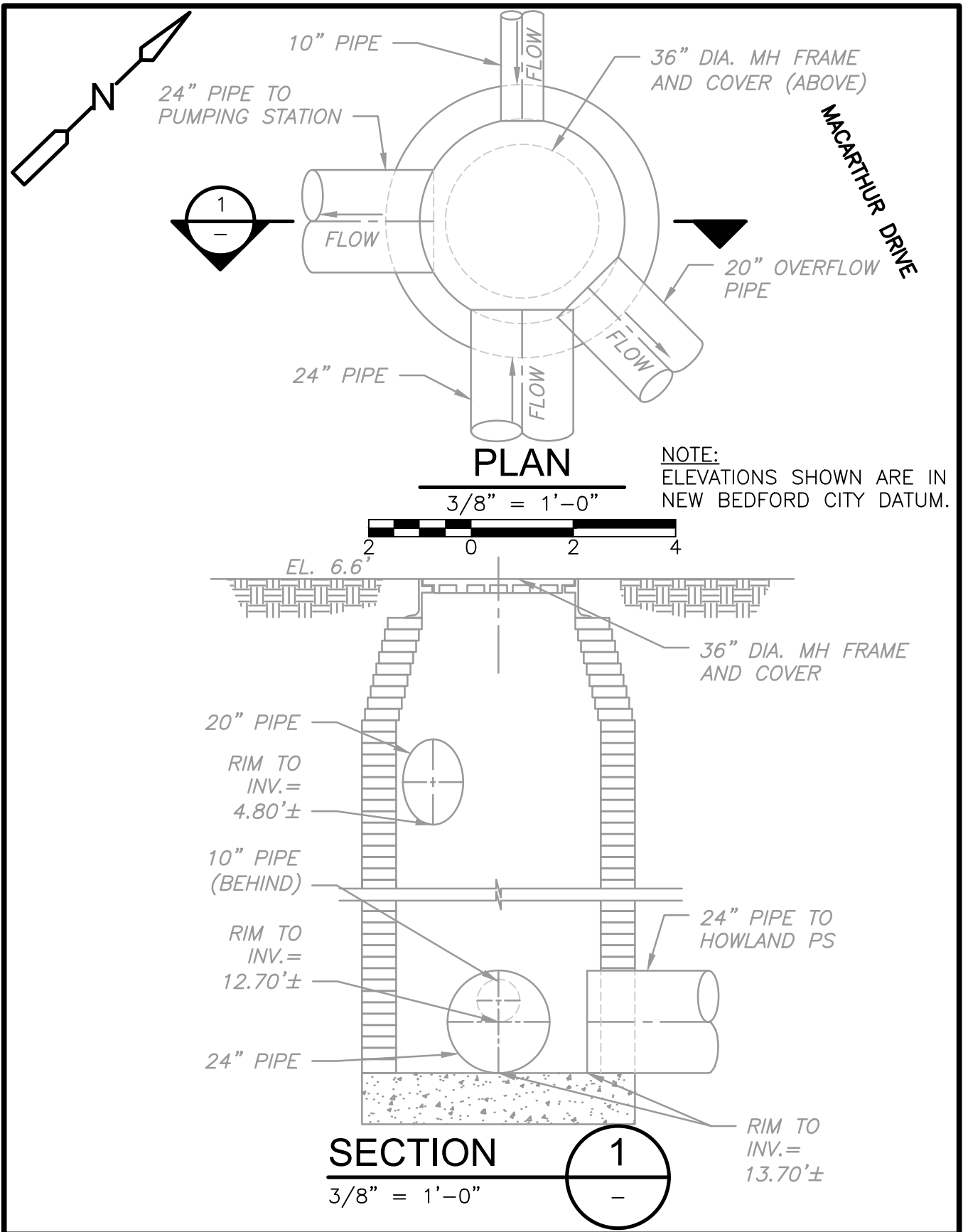
Intra-System Status: No

Tide Gate Status: None

Notes: Dimensions taken from sewer plot 52, So. term #1 (sheet 9).pdf, and field investigation on 1/7/2025

Location Sketch:







REGULATOR FIELD PHOTOS

Figure 1



Figure 2



Figure 3



Descriptions:

Figure 1: Aerial location with arrow pointing to estimated location of R-031E manhole.

Figure 2: Aerial location showing nearby streets.

Figure 3: Looking down the manhole of R-031E.