

New Bedford Regulator Specification Sheet

Regulator #: R-031D

Location: Bonney St. and Grinnell St.

Date: 6/25/25

Structure Measurements

Structure Type: Single manhole

Rim Elevation (ft City Datum): 34.5

Regulator Type: Fixed Weir

Overflow Height (ft or in): 0.65

Rim to Top of Weir (ft): 11.75

Weir Dims (ft or in): Length: 9.5', Height: 0.65' above inlet elevation

Influent pipe ø (in): 54

Rim to Influent Invert (ft): 12.4

Dry Weather Connection ø (in): 24

Rim to Dry Weather Invert (ft): 13.25

Overflow pipe ø (in): 72

Rim to Overflow Invert (ft): 13.4

Sensor Measurements

Block Present: Yes

Level Sensor Status: Not Metered

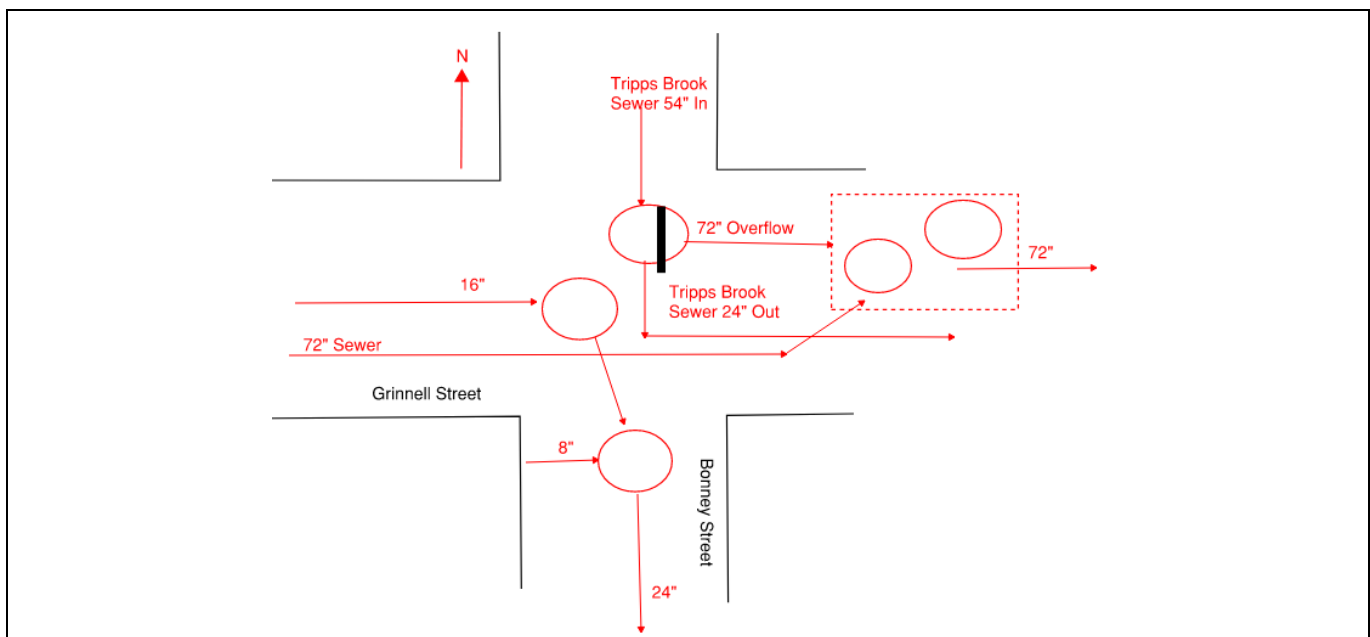
Sensor Installation Date: n/a

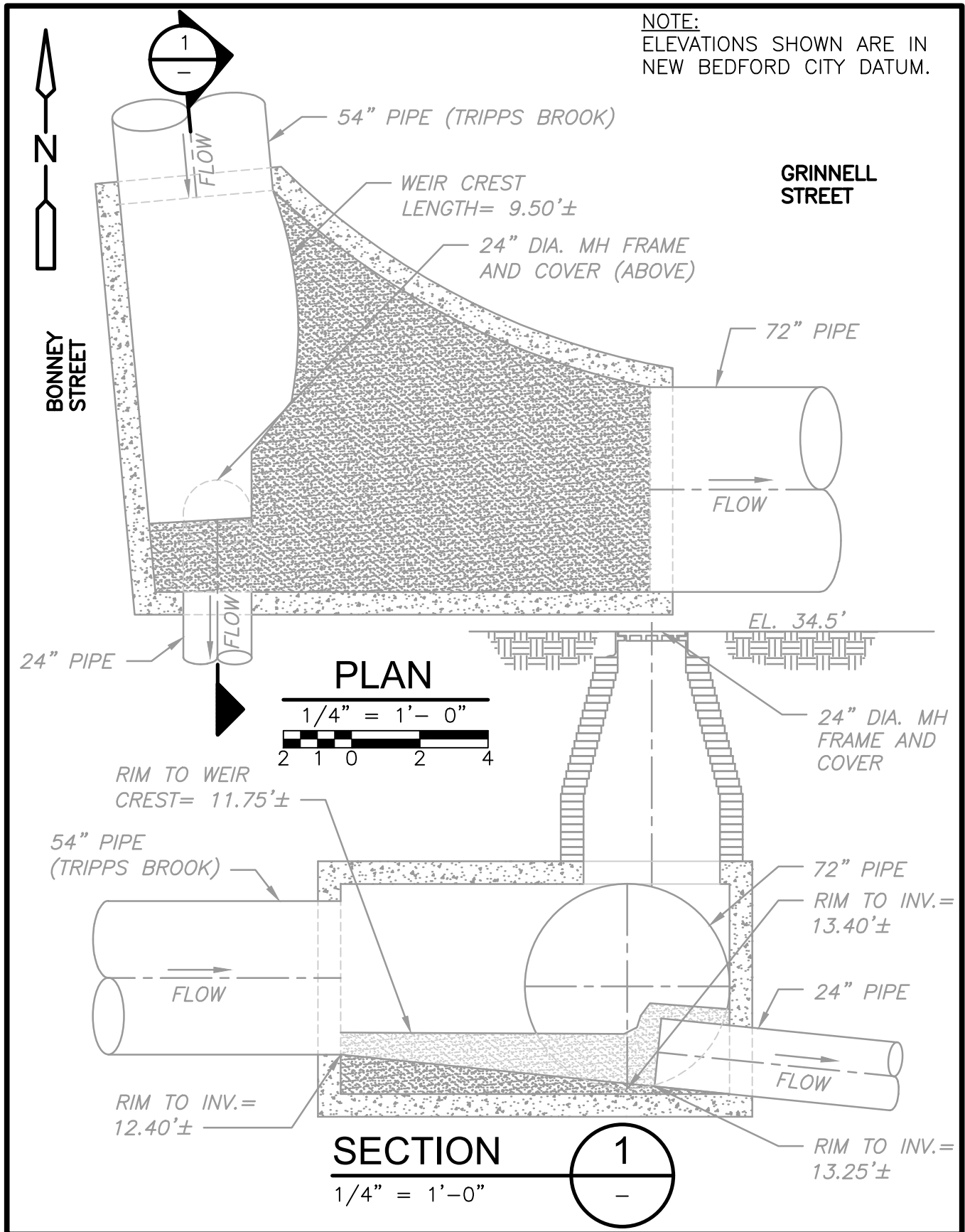
Intra-System Status: No

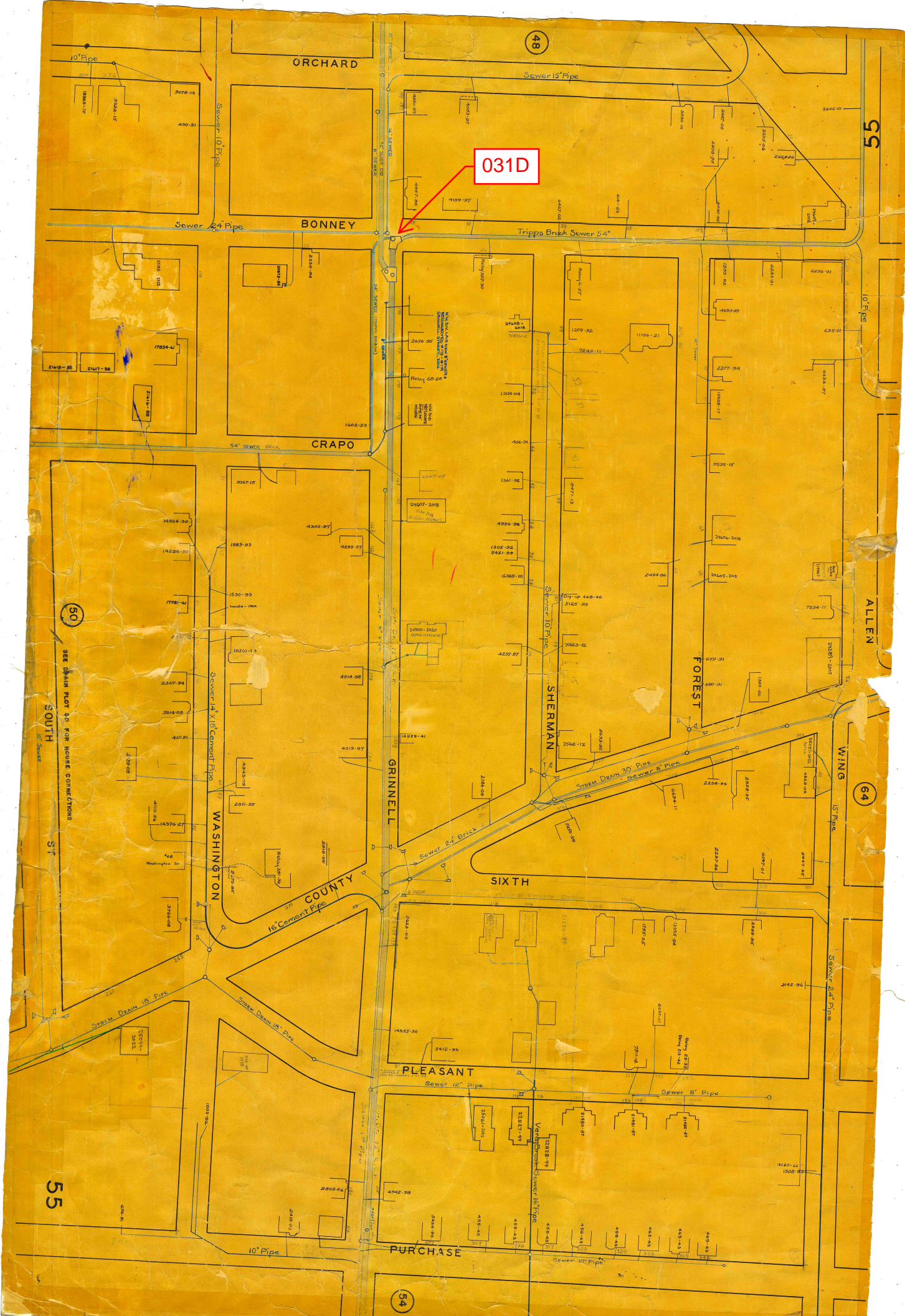
Tide Gate Status: None

Notes: Chamber dimensions, weir crest length, and 54" and 72" elevations estimated from scan and from record drawing 6641

Location Sketch:







031D

55

ALLEN

64

WING

Sewer 24" Pipe

48

Sewer 15" Pipe

Tripps Brook Sewer 5 4"

SHERMAN

Storm Drain 30" Pipe

Sewer 8" Pipe

SIXTH

PLEASANT

Sewer 12" Pipe

Sewer 8" Pipe

PURCHASE

GRINNELL

Sewer 24" Brick

COUNTY

16" Cement Pipe

WASHINGTON

Storm Drain 18" Pipe

10" Pipe

ORCHARD

BONNEY

CRAPO

WASHINGTON

Storm Drain 18" Pipe

Storm Drain 18" Pipe

Storm Drain 18" Pipe

Storm Drain 18" Pipe

10" Pipe

10" Pipe

Sewer 10" Pipe

Sewer 24" Pipe

50

SEE DATA PLOT 40 FOR HOUSE CONNECTIONS

SOUTH

ST

55

54

REGULATOR FIELD PHOTOS

Figure 1



Figure 2



Figure 3



Figure 4



Descriptions:

Figure 1: Inside of R-031D. Outflow and weir crest visible.

Figure 2: Inside of R-031D. 360 view.

Figure 3: Location of manhole, facing east down Grinnell Street.

Figure 4: Aerial location with arrow pointing to corresponding manhole.