

## CSO SPEC SHEET

Structure #: REG 031 D

Date: 09/04/2012  
Insp. By: AK

Location: At the Intersection of Boney St and Grinnel St.

Structure Type: Cast in Place

Regulator Type: Block Reg

Structure DIM's: \_\_\_\_\_

Weir Dim's: \_\_\_\_\_

Size of Sewer Pipe: 54"

Rim to High Level Outfall: 11'

Size of Storm Drain Pipe: 74"

Rim to Storm Drain Invert: \_\_\_\_\_

Sewer Direction: East to South *North*

Rim to Top of Sewer (Normal Flow): 13.4'

Free Board: 2.4"

Over All Rating: (Circle One)

Poor

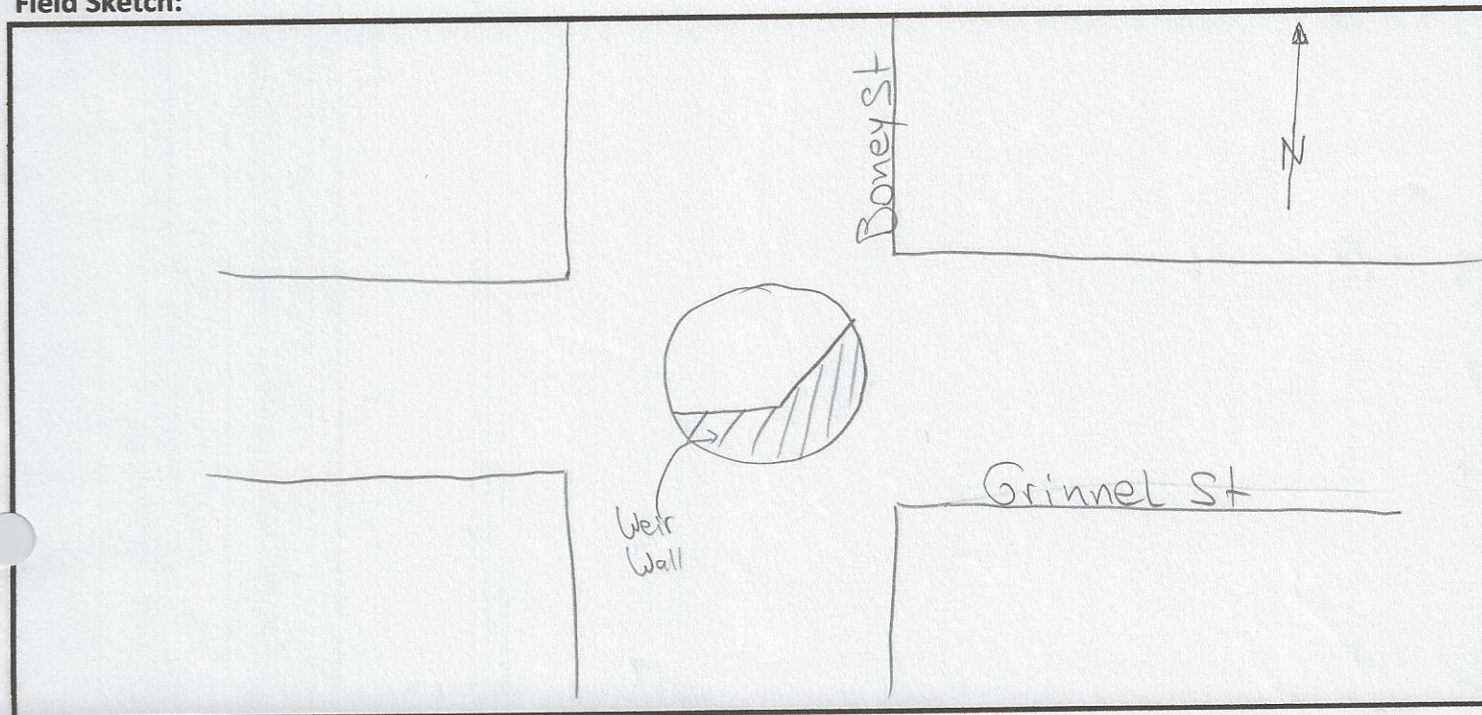
Fair

Good

Excellent

Comments: No Repairs Needed. Storm Drain on Top of Sewer.

Field Sketch:





## CSO FIELD PHOTOS

Structure#: REG 031 D

Location: At the Intersection of Boney St and Grinnell St.

Figure 1.



Figure 2.

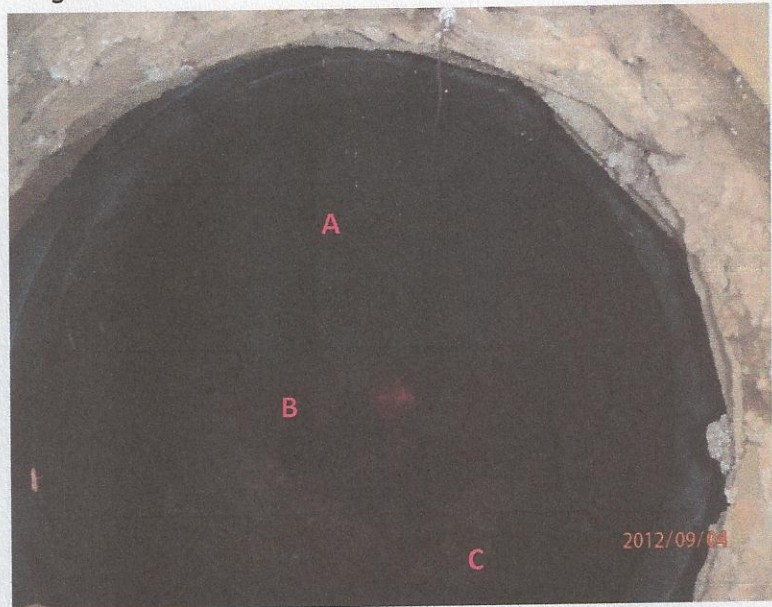
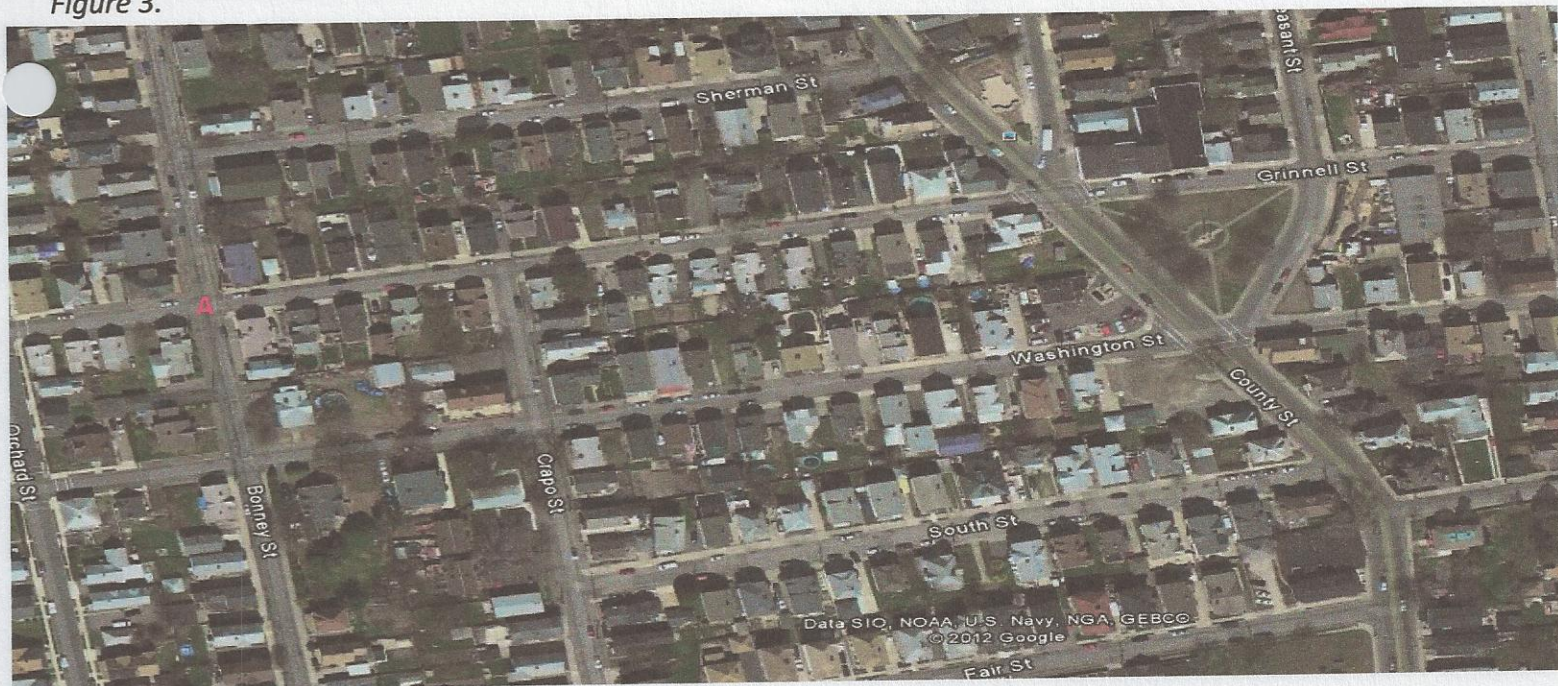


Figure 3.



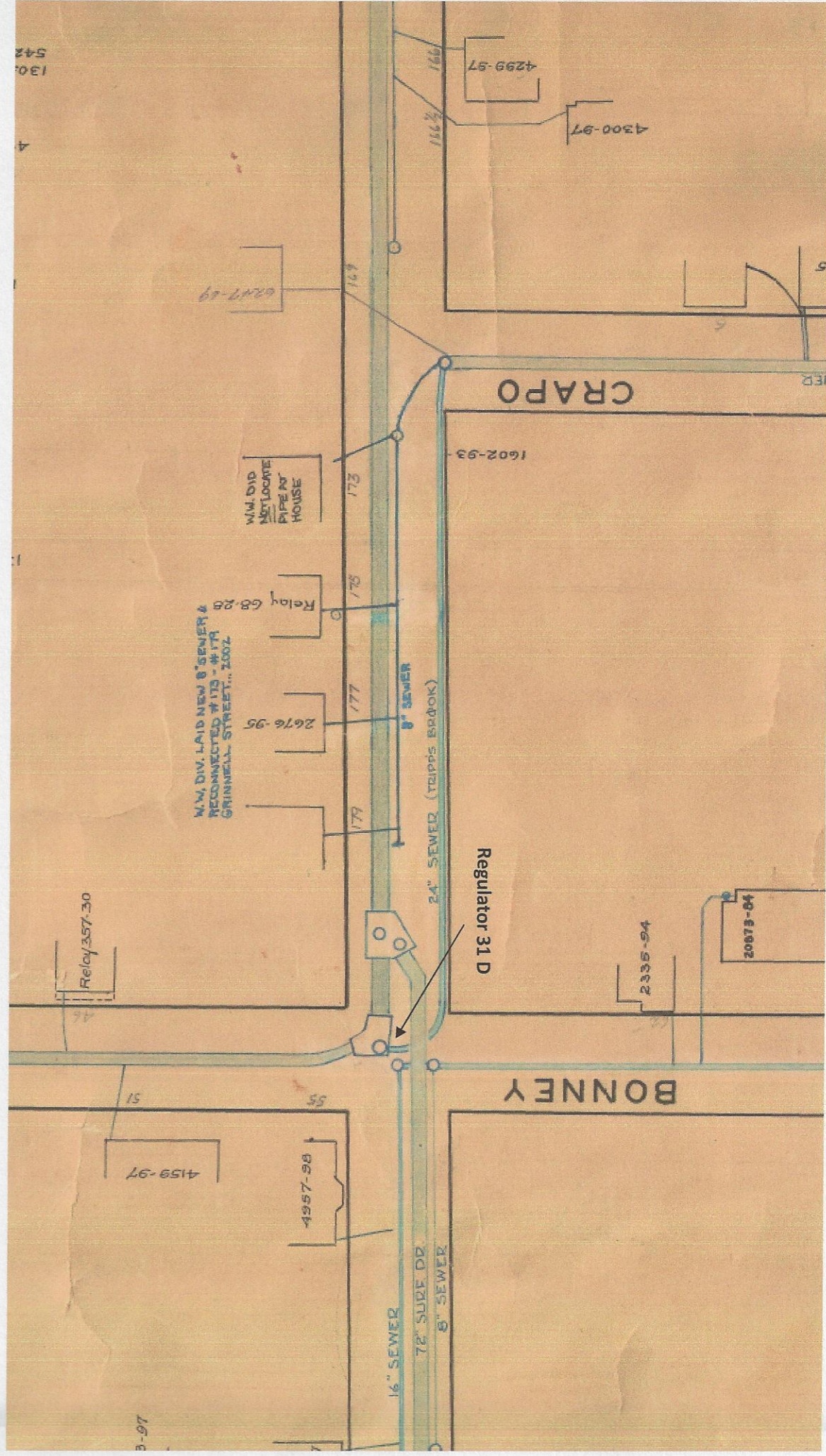
### Descriptions

**Figure 1:** View of Regulator 031 D. Facing North East.

**Figure 2:** Inside view of manhole. A- Sewer; B- Weir Wall; C- Storm Drain.

**Figure 3:** Google Earth Image of location of Regulator 031 D. A- Reg 031 D







## CSO/Regulator Repair Log

Structure #: log 031D

[illegible]