

New Bedford Regulator Specification Sheet

Regulator #: R-031B

Location: 268 S. Second St. by crosswalk in front of school, on sidewalk.

Date: 6/25/25

Structure Measurements

Structure Type: Multichamber (2)

Rim Elevation (ft City Datum): 6.6

Regulator Type: Fixed Weir

Overflow Height (ft or in): 1.83

Rim to Top of Weir (ft): 3.67

Weir Dims (ft or in): Length: 3', Width: 0.75', Height: 1.83'

Influent pipe ø (in): 19"x24"

Rim to Influent Invert (ft): 5.5

Dry Weather Connection ø (in): 18, 18

Rim to Dry Weather Invert (ft): 7.5, 7.5

Overflow pipe ø (in): 18, 18

Rim to Overflow Invert (ft): 10, 10, 10.4

Sensor Measurements

Block Present: Yes

Level Sensor Status: Metered

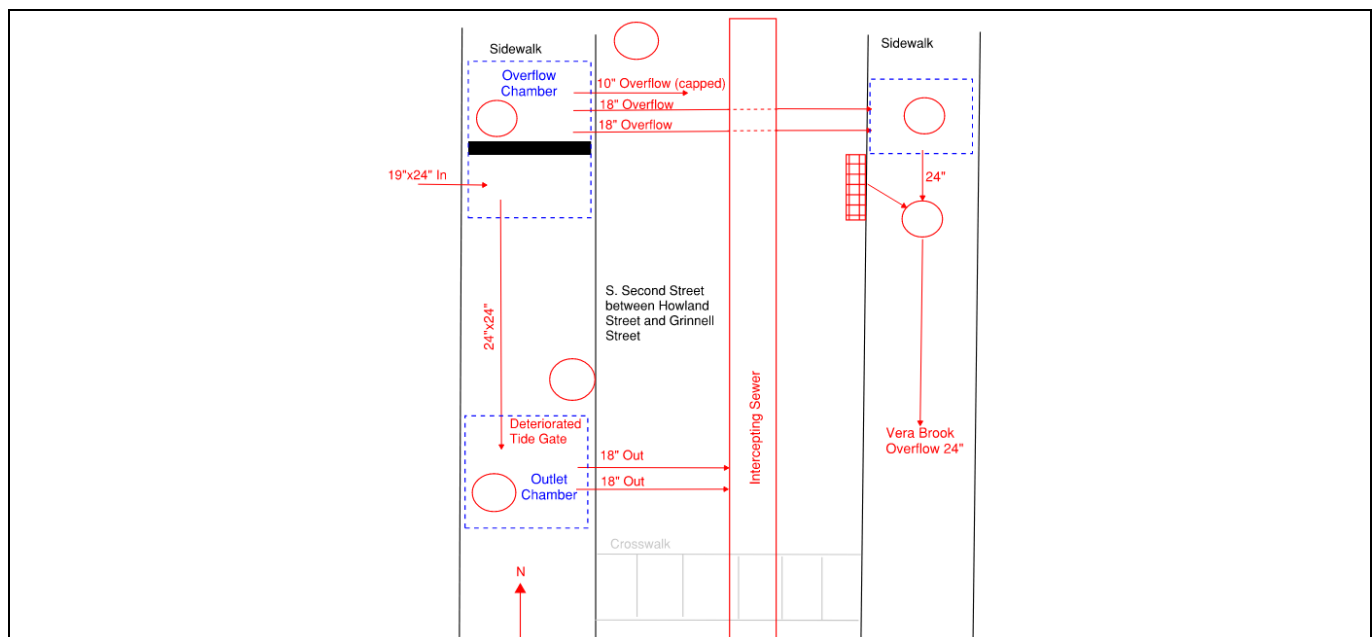
Sensor Installation Date: 10/14/2020

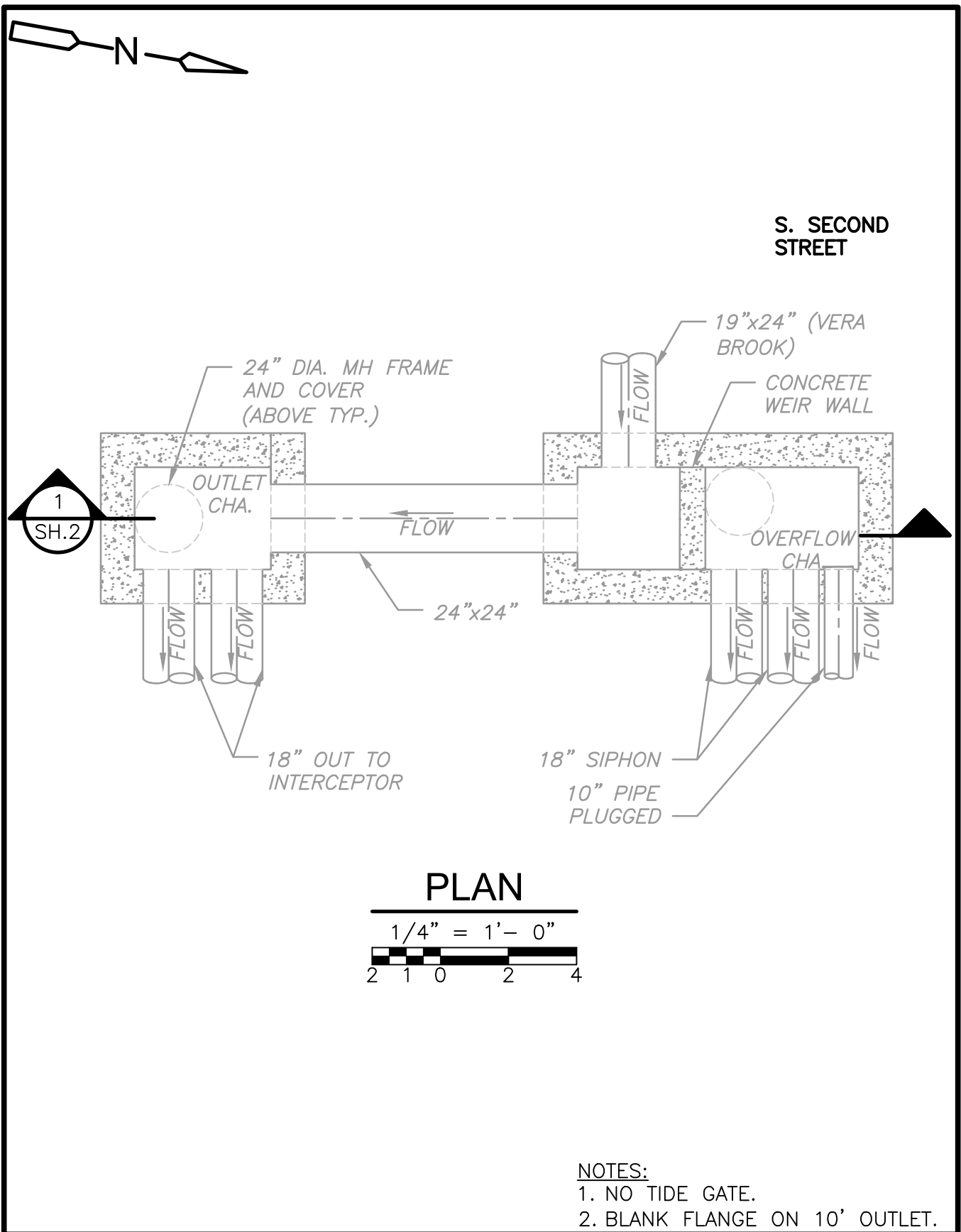
Intra-System Status: No

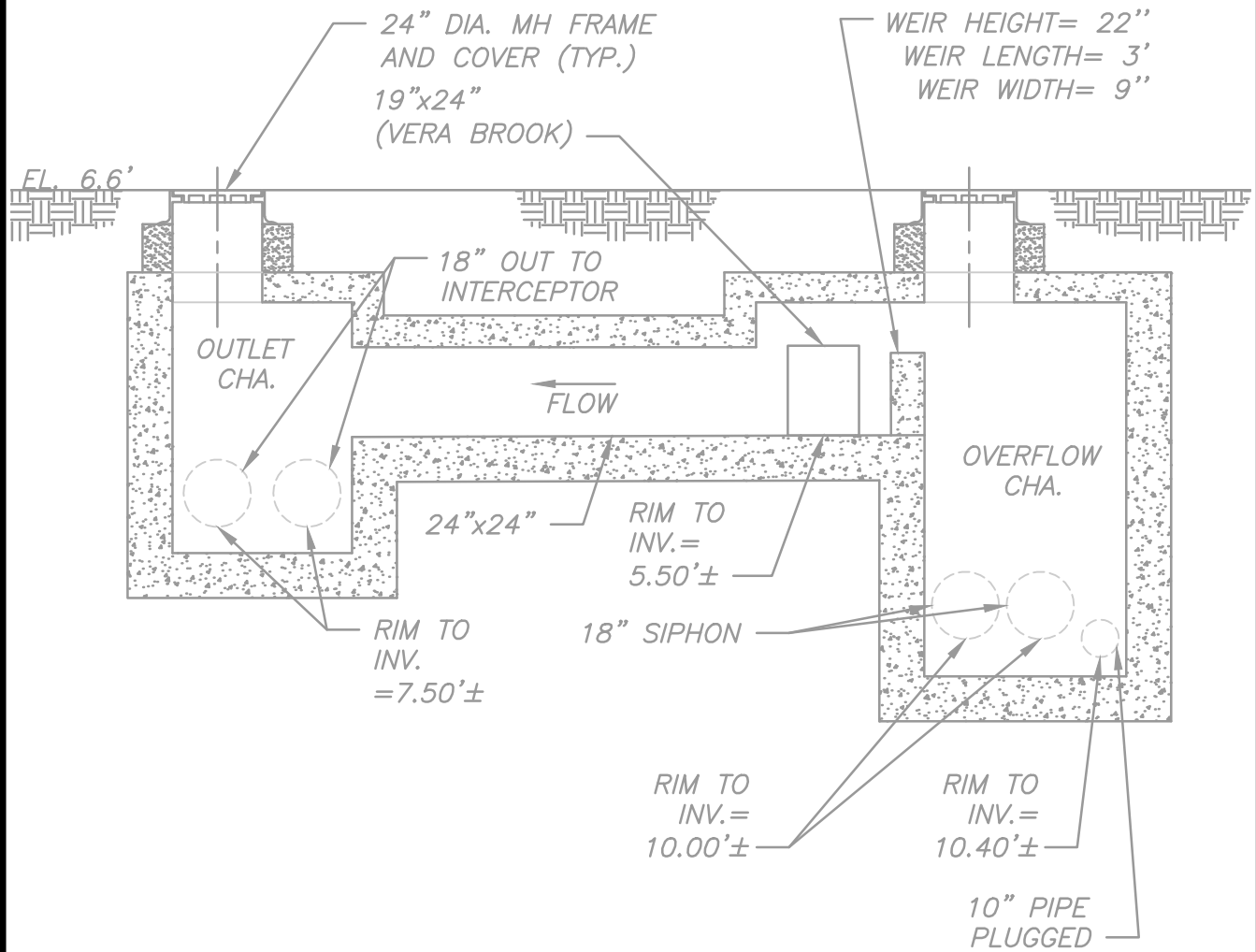
Tide Gate Status: Gate gone

Notes: Only overflow chamber scanned by Redzone in 2023. Other dimensions were taken from record drawings, field visits, and pictures. The 2020 ADS meter was installed in overflow chamber (wet weather outlet) and the 2013 Flow Assessment Services meter was installed over the 19"x24" inlet

Location Sketch:

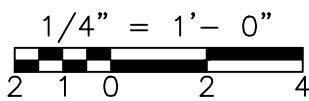
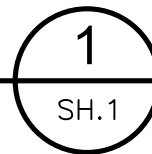






SECTION

1/4" = 1'-0"



NOTES:

1. ELEVATIONS SHOWN ARE IN NEW BEDFORD CITY DATUM.
2. NO TIDE GATE.
3. BLANK FLANGE ON 10' OUTLET.

54

WING STREET

STREET

HOWLAND

66

PURCHASE

STREET

GRINNELL

AVENUE

SOUTH

ACUSHNET

BAY

VILLAGE

SECOND

STREET

031B

GOMES ELEM.

SCHOOL

JOHN F. KENNEDY

MEMORIAL

HWY.

FIRST NATIONAL STORES
VACUUM INDUSTRIES (CORP.)

CONWAY

DRIVE

ARTHUR

MAC

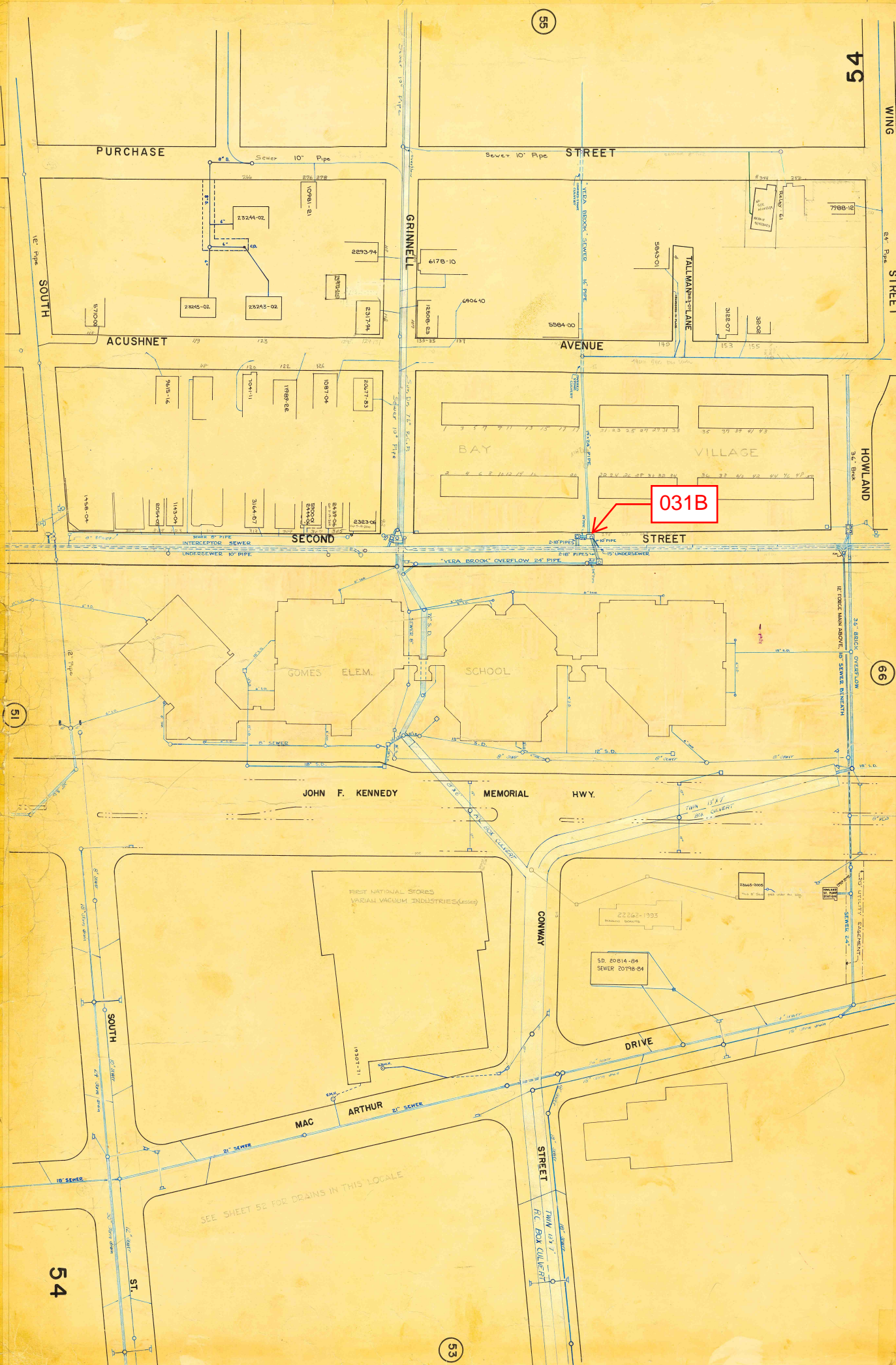
STREET

FLY BOX CULVERT

54

53

SEE SHEET 52 FOR DRAINS IN THIS LOCALE



REGULATOR FIELD PHOTOS

Figure 1



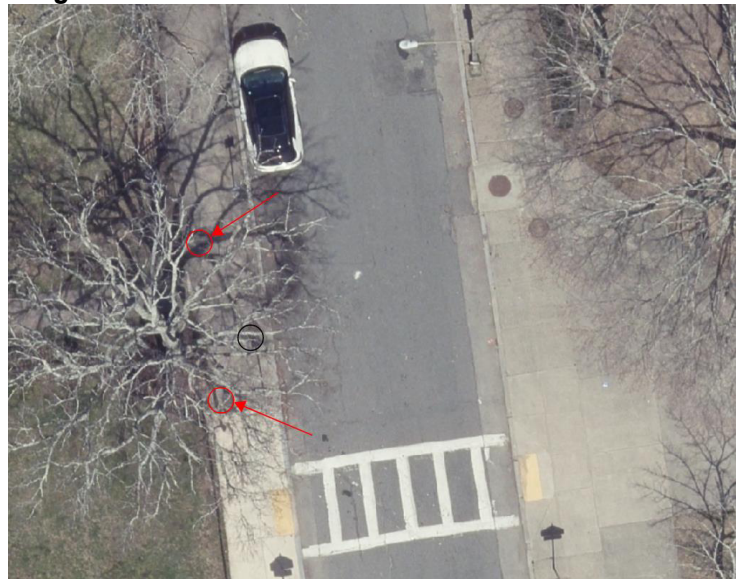
Figure 2



Figure 3



Figure 4



Descriptions:

Figure 1: Inside of R-031B. Weir wall and storm drain visible.

Figure 2: Inside of R-031B Outlet Chamber. Broken tide gate and 24"x24" opening to Dry Weather Flow Chamber visible.

Figure 3: Location of manholes, facing south down S. Second Street.

Figure 4: Aerial location with arrows pointing to corresponding manholes drawn in red.

