

# New Bedford Regulator Specification Sheet

**Regulator #:** R-031A

**Location:** S. Second St. at Grinnell St.

**Date:** 6/25/25

## Structure Measurements

**Structure Type:** Single manhole

**Rim Elevation (ft City Datum):** 6.9

**Regulator Type:** High Level Outlet

**Overflow Height (ft or in):** 1.55'

**Rim to Top of Weir (ft):** 3.75 (invert of 3"x12" opening)

**Weir Dims (ft or in):** 3" x 12" opening 1.55' above chamber bottom

**Influent pipe ø (in):** 10.8

**Rim to Influent Invert (ft):** 5.3

**Dry Weather Connection ø (in):** 24x24

**Rim to Dry Weather Invert (ft):** 5.3

**Overflow pipe ø (in):** 3" x 12" opening

**Rim to Overflow Invert (ft):** 3.75 (invert of 3"x12" opening)

## Sensor Measurements

**Block Present:** No - see note

**Level Sensor Status:** Metered

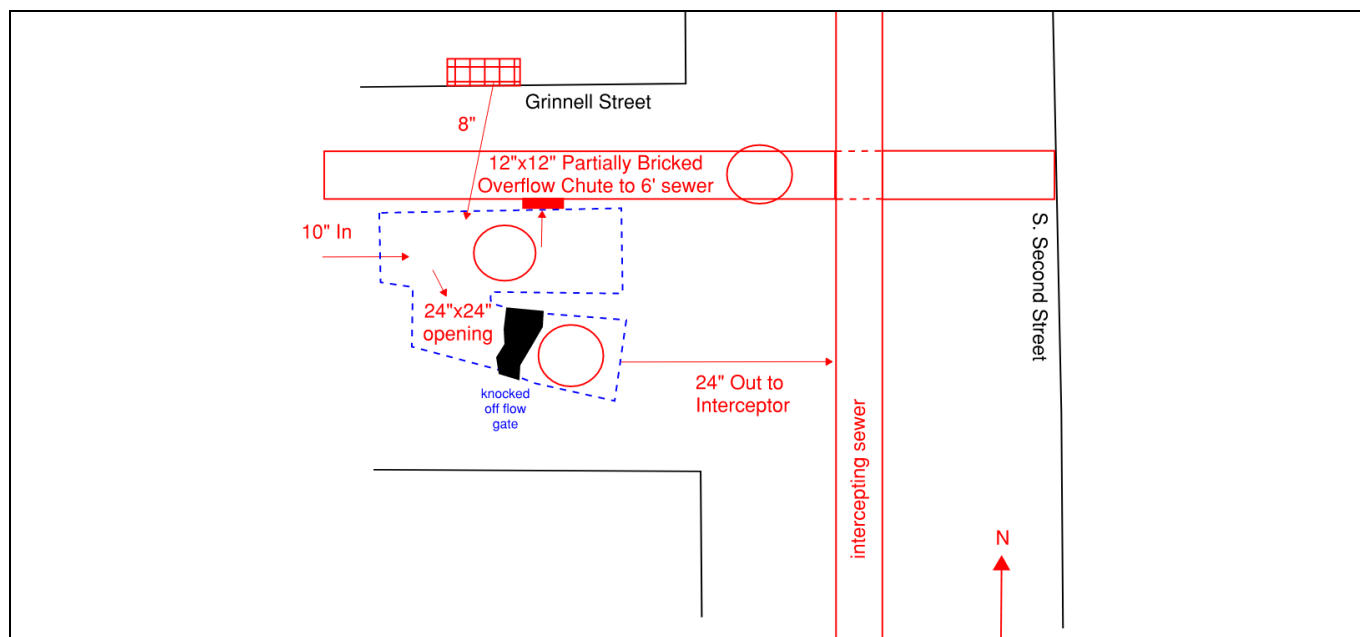
**Sensor Installation Date:** 7/25/2022

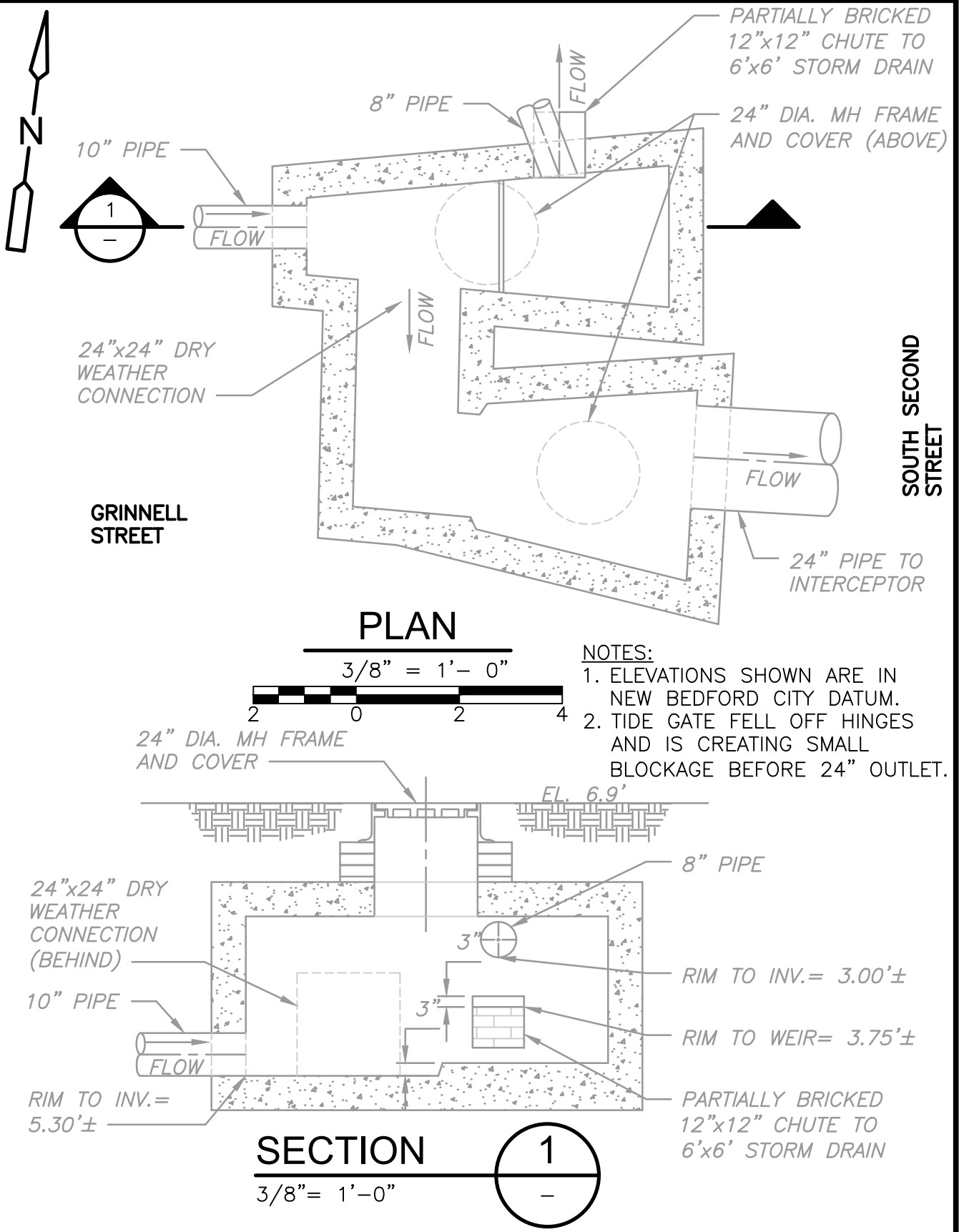
**Intra-System Status:** No

**Tide Gate Status:** Gate gone

**Notes:** Overflow block is placed on a sill. Scan and inspection shows knocked off tide gate before the dry weather outlet. Plan 6640 indicates that the chute should be 24" wide x 18" high, but it only measures 12" wide by 10" high and is partially bricked up according to the scan. Plan 8184A is not correct- it does not show the correct orientation of the structure.

## Location Sketch:





54

WING STREET

STREET

HOWLAND

66

PURCHASE

STREET

SOUTH

ACUSHNET

AVENUE

TALMAN LANE

BAY

VILLAGE

031A

SECOND

STREET

GOMES ELEM.

SCHOOL

JOHN F. KENNEDY

MEMORIAL

HWY.

FIRST NATIONAL STORES  
VACUUM INDUSTRIES (CORP.)

CONWAY

DRIVE

MAC

ARTHUR

STREET

FLY BOX CULVERT

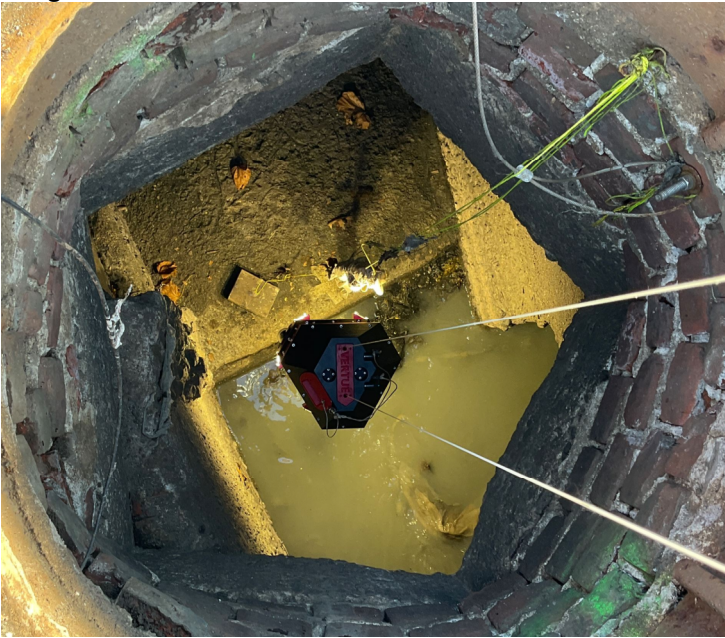
54

53



## REGULATOR FIELD PHOTOS

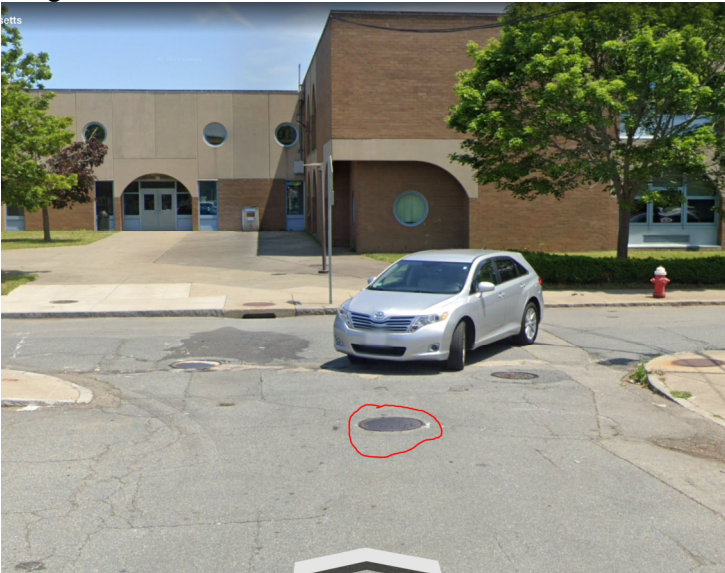
**Figure 1**



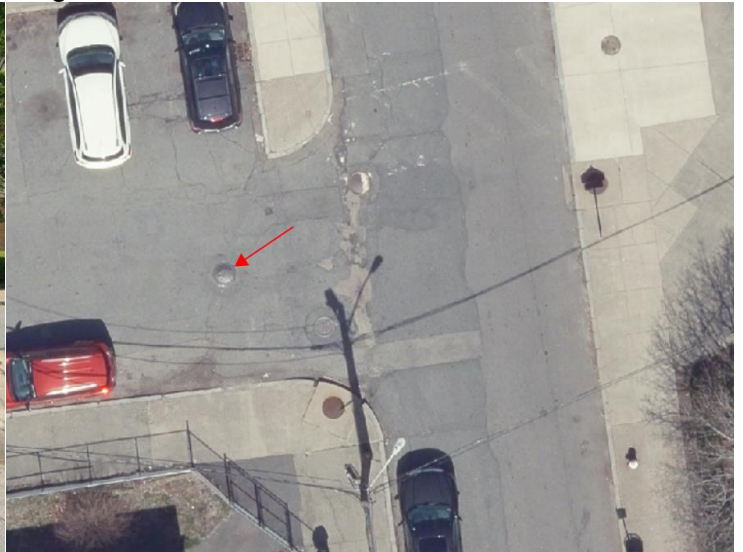
**Figure 2**



**Figure 3**



**Figure 4**



### Descriptions:

**Figure 1:** Inside of R-031A. Dry weather connection and block visible.

**Figure 2:** Inside of R-031A adjacent chamber. Dry weather connection and irregular weir visible.

**Figure 3:** Location of manhole marked in red. Google Earth snapshot facing east down Grinnell Street.

**Figure 4:** Aerial location with arrow pointing to corresponding manhole.