

# New Bedford, Ma

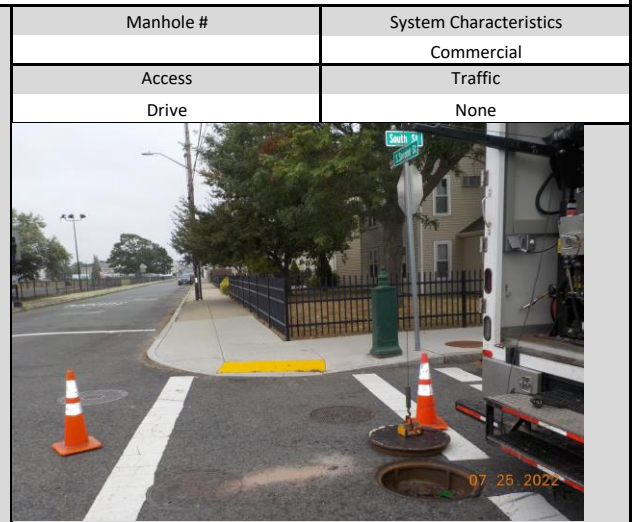
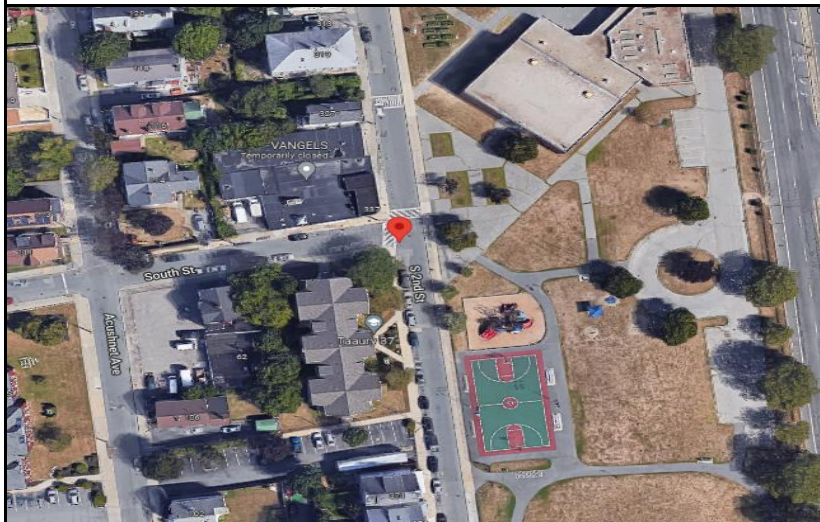
## Flow Monitoring Site Installation Report



Site I.D.

030B

Site Address / Location:	S 2nd St at South St	Monitor Series	ECHO	Location Type	Temporary
Site Access:	Drive	Pipe Size (H x W)	12.50x12.38	Pipe Shape	Circular



Installation Information	
Installation Date:	Monday, July 25, 2022
Monitoring Location (Sensors):	ECHO Depth
Sensors / Devices:	ECHO Depth
Installation Type:	Level Only
Monitor Location:	Manhole
Pressure Sensor Range (psi)	
Installation Confirmation:	
Confirmation Time:	10:05:00 AM
Depth of Flow (Wet DOF) (in)	
Downlooker Physical Offset (in)	
Peak Velocity (fps)	
Silt (in)	0
Hydraulic Comments:	



Manhole / Pipe Information:	
Manhole Depth (Approx. In):	100
Manhole Material:	Concrete
Manhole Opening Diameter (in)	
Manhole Cover	Concealed
Active Drop Connections	
Pipe Material	Brick
Communication Information:	
Communication Type	Wireless
Antenna Location	Drilled Pavement / Concrete
Additional Site Info. / Comments:	

ADS Project Name:	New Bedford, Ma
ADS Project Number:	32673.52