

New Bedford, Ma

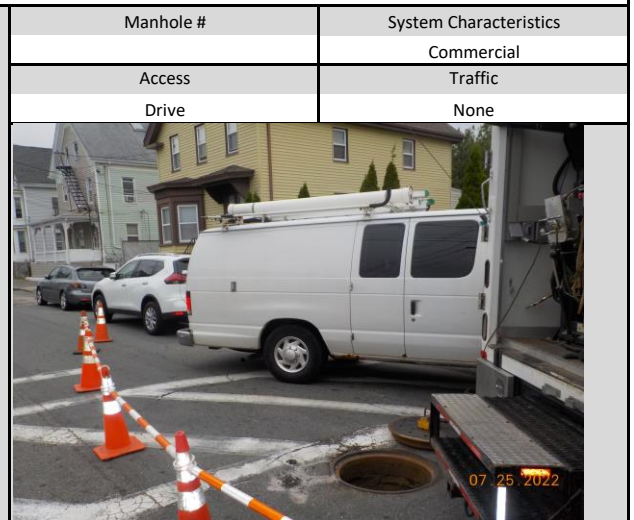
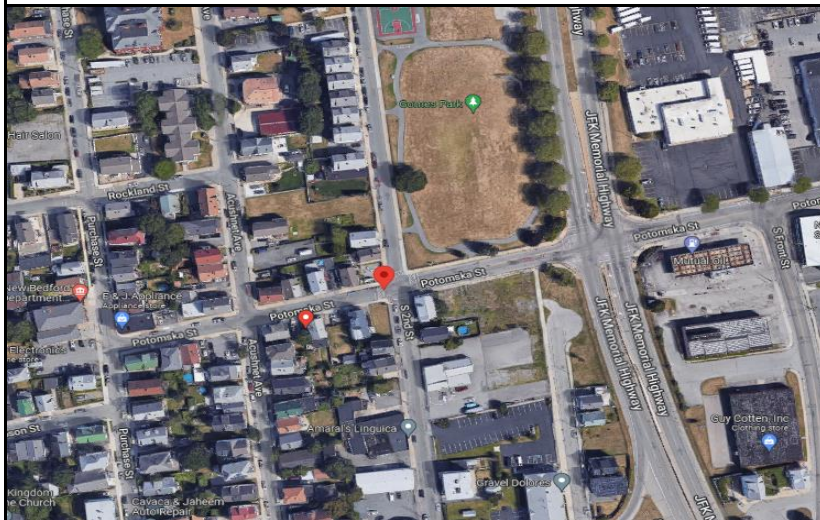
Flow Monitoring Site Installation Report



Site I.D.

030A

Site Address / Location:	Potomska St at S 2nd St	Monitor Series	ECHO	Location Type	Temporary
Site Access:	Drive	Pipe Size (H x W)	36x36	Pipe Shape	Circular



Installation Information

Installation Date:	Monday, July 25, 2022	Installation Type:	Level Only
Monitoring Location (Sensors):	ECHO Depth	Monitor Location:	Manhole
Sensors / Devices:	ECHO Depth	Pressure Sensor Range (psi)	

Installation Confirmation:

Confirmation Time:	10:05:00 AM	Pipe Size (HxW)	36x36
Depth of Flow (Wet DOF) (in)		Range (Air DOF) (in)	
Downlooker Physical Offset (in)		Measurement Confidence (in)	
Peak Velocity (fps)		Velocity Sensor Offset (in)	
Silt (in)	0	Silt Type	

Hydraulic Comments:

Manhole / Pipe Information:

Manhole Depth (Approx. In):	80	Manhole Configuration	CSO Flow Divider
Manhole Material:	Brick	Manhole Condition:	Good
Manhole Opening Diameter (in)		Manhole Diameter (Approx.):	
Manhole Cover	Concealed	Manhole Frame	Normal
Active Drop Connections		Air Quality:	Good
Pipe Material	Brick	Pipe Condition:	Good

Communication Information:

Communication Type	Wireless	Antenna Location	Drilled Pavement / Concrete
--------------------	----------	------------------	-----------------------------

Additional Site Info. / Comments:

ADS Project Name:	New Bedford, Ma
ADS Project Number:	32673.52