

# New Bedford Regulator Specification Sheet

**Regulator #:** R-027F

**Location:** Grenier St. at Belleville Ave.

**Date:** 6/25/25

## Structure Measurements

**Structure Type:** Single manhole

**Rim Elevation (ft City Datum):** 20.6

**Regulator Type:** Fixed Weir

**Overflow Height (ft or in):** 8"

**Rim to Top of Weir (ft):** 11.1

**Weir Dims (ft or in):** Length 3', Width 6", Height: 8"

**Influent pipe ø (in):** 6

**Rim to Influent Invert (ft):** 10.6

**Dry Weather Connection ø (in):** 10

**Rim to Dry Weather Invert (ft):** 11.8

**Overflow pipe ø (in):** 8

**Rim to Overflow Invert (ft):** 11.8

## Sensor Measurements

**Block Present:** No

**Level Sensor Status:** Not Metered

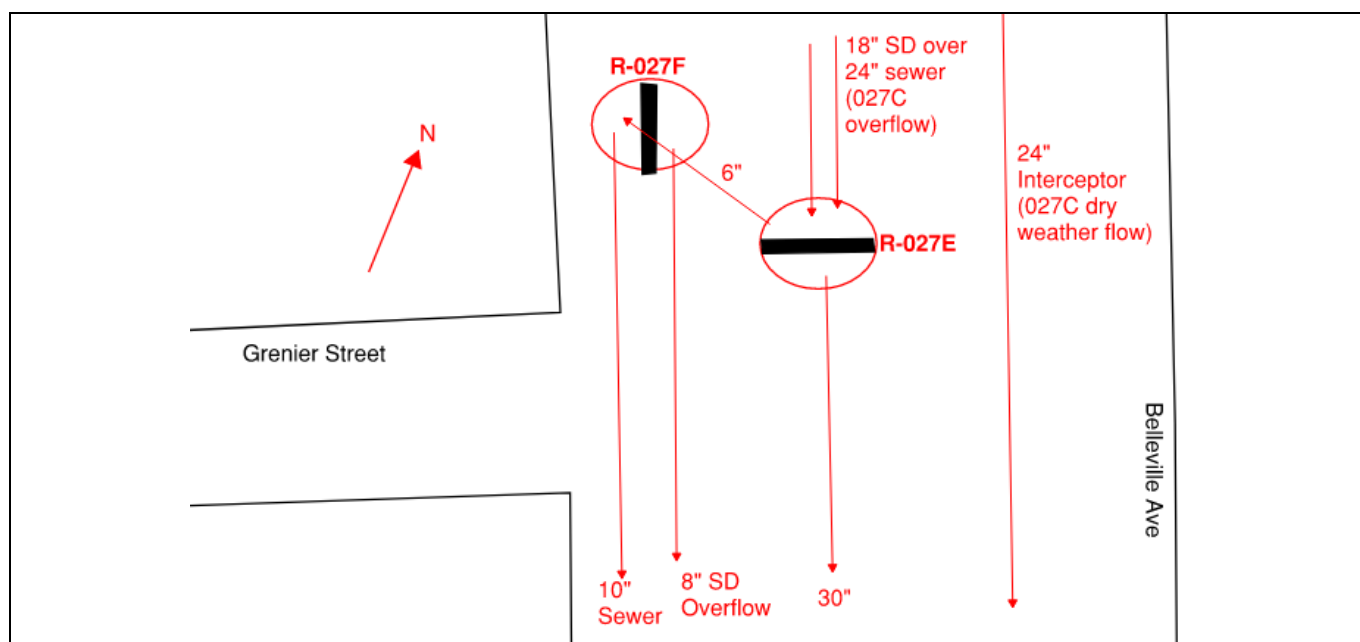
**Sensor Installation Date:** n/a

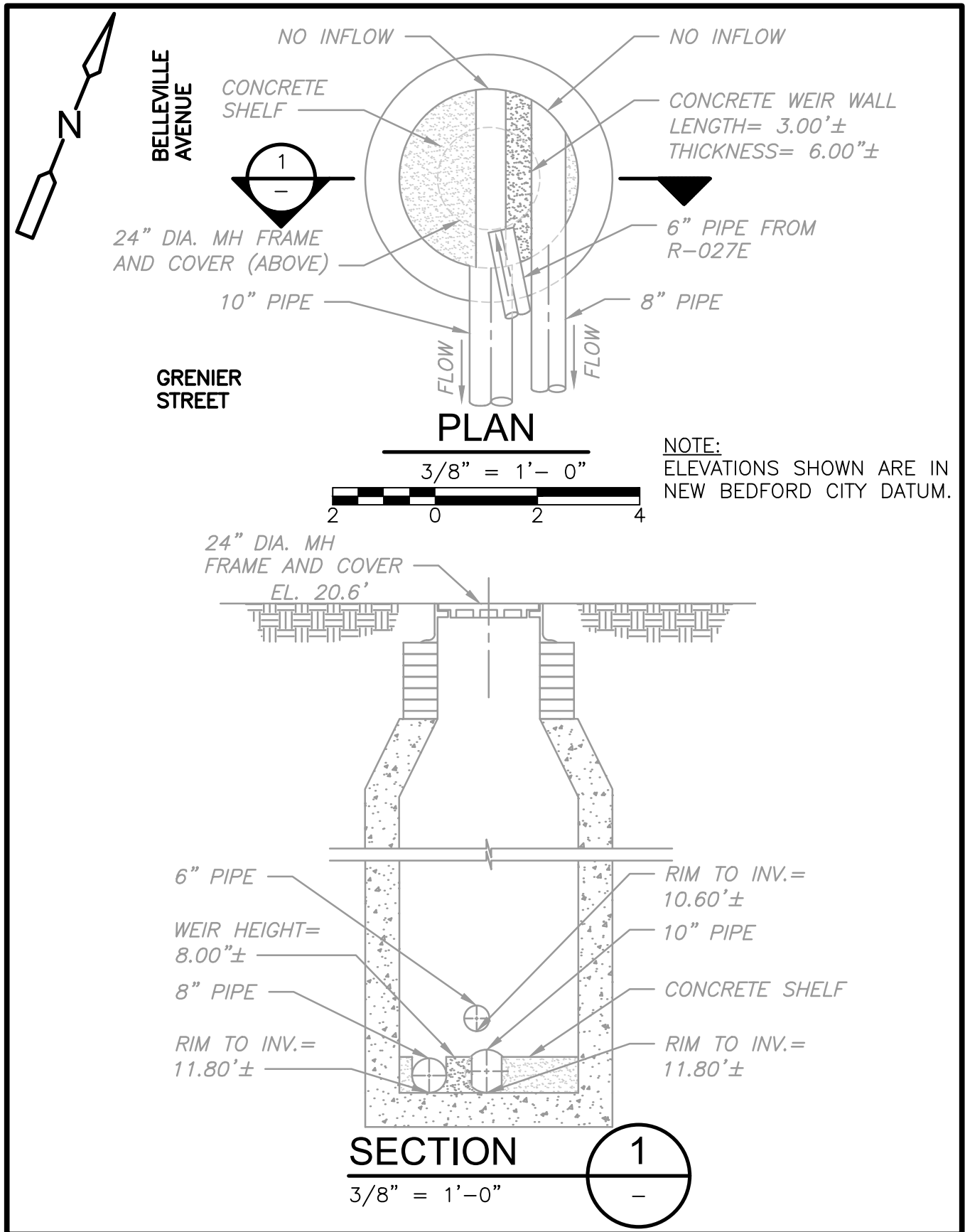
**Intra-System Status:** Yes

**Tide Gate Status:** None

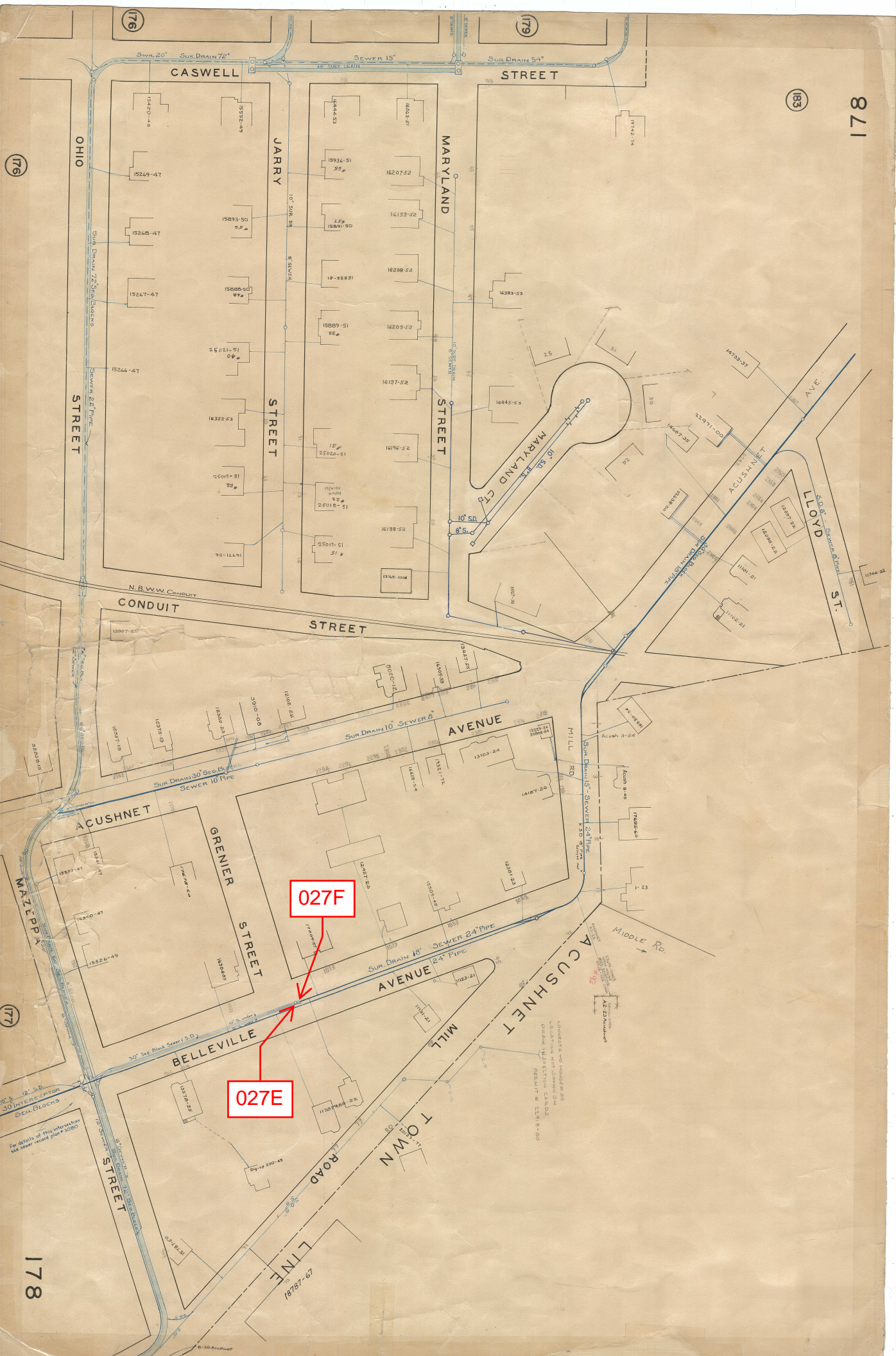
**Notes:** This manhole is at the upstream end of a storm and sewer pipe, and it allows for potential cross-connection. The 8" and 10" pipes start at this manhole. The only flow into this structure is from the 6" pipe coming from R-027E.

## Location Sketch:











## REGULATOR FIELD PHOTOS

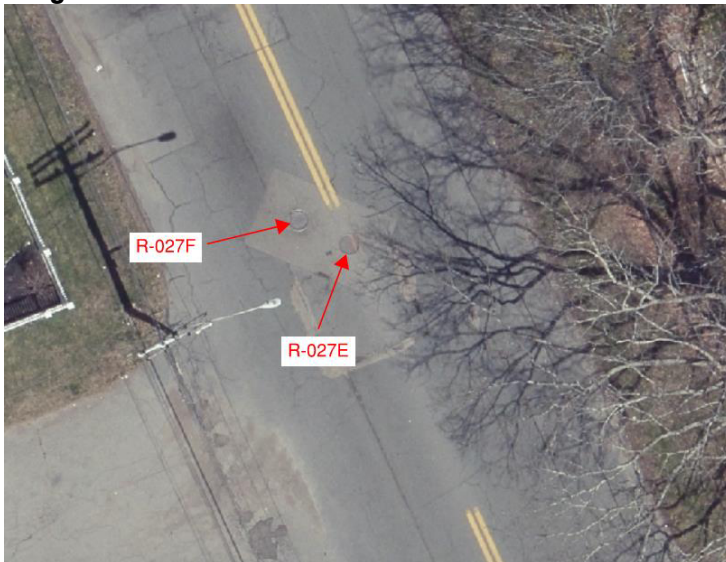
**Figure 1**



**Figure 2**



**Figure 3**



### Descriptions:

**Figure 1:** Inside of R-027F. Inlet, outlet, weir, and overflow visible.

**Figure 2:** Location of manhole facing north along Belleville Ave.

**Figure 3:** Aerial location with arrow pointing to corresponding manhole.