

New Bedford Regulator Specification Sheet

Regulator #: R-026A

Location: River Rd. at Truro St.

Date: 6/25/25

Structure Measurements

Structure Type: Single manhole

Rim Elevation (ft City Datum): 7.2

Regulator Type: Fixed Weir

Overflow Height (ft or in): 13"

Rim to Top of Weir (ft): 7.2

Weir Dims (ft or in): Length: 4.33', Width: 8", Height: 13"

Influent pipe \varnothing (in): 65x52

Rim to Influent Invert (ft): 8.3

Dry Weather Connection \varnothing (in): 8

Rim to Dry Weather Invert (ft): 8.3

Overflow pipe \varnothing (in): 65x52

Rim to Overflow Invert (ft): 8.2

Sensor Measurements

Block Present: Yes

Level Sensor Status: Metered

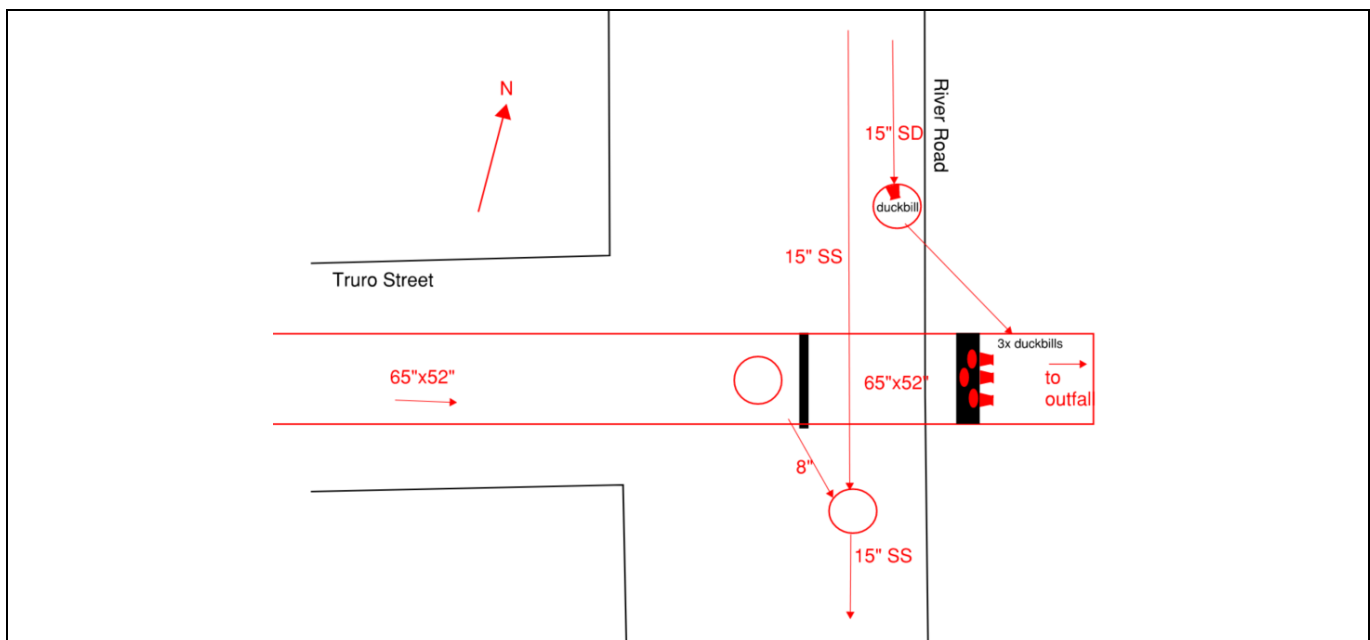
Sensor Installation Date: 7/26/2022

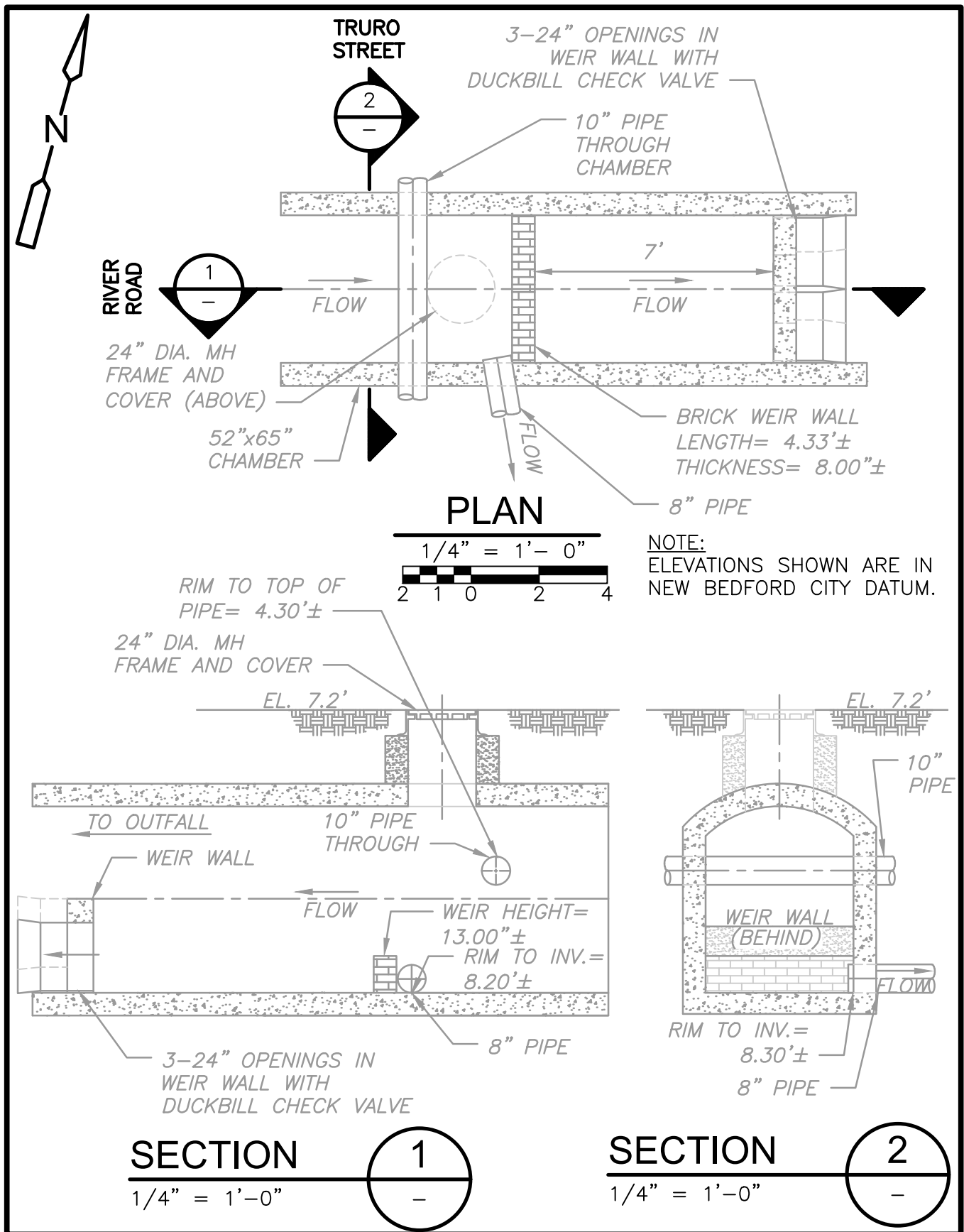
Intra-System Status: No

Tide Gate Status: None

Notes: Three pipes observed in downstream of overflow (Figure) with unknown dimensions.

Location Sketch:





651

(177)

ACUSHNET

MILL RD.

TARKILN

HILL

ROAD

COBB STREET

AVENUE

HAMLIN

STREET

(160)

DAWSON ST.

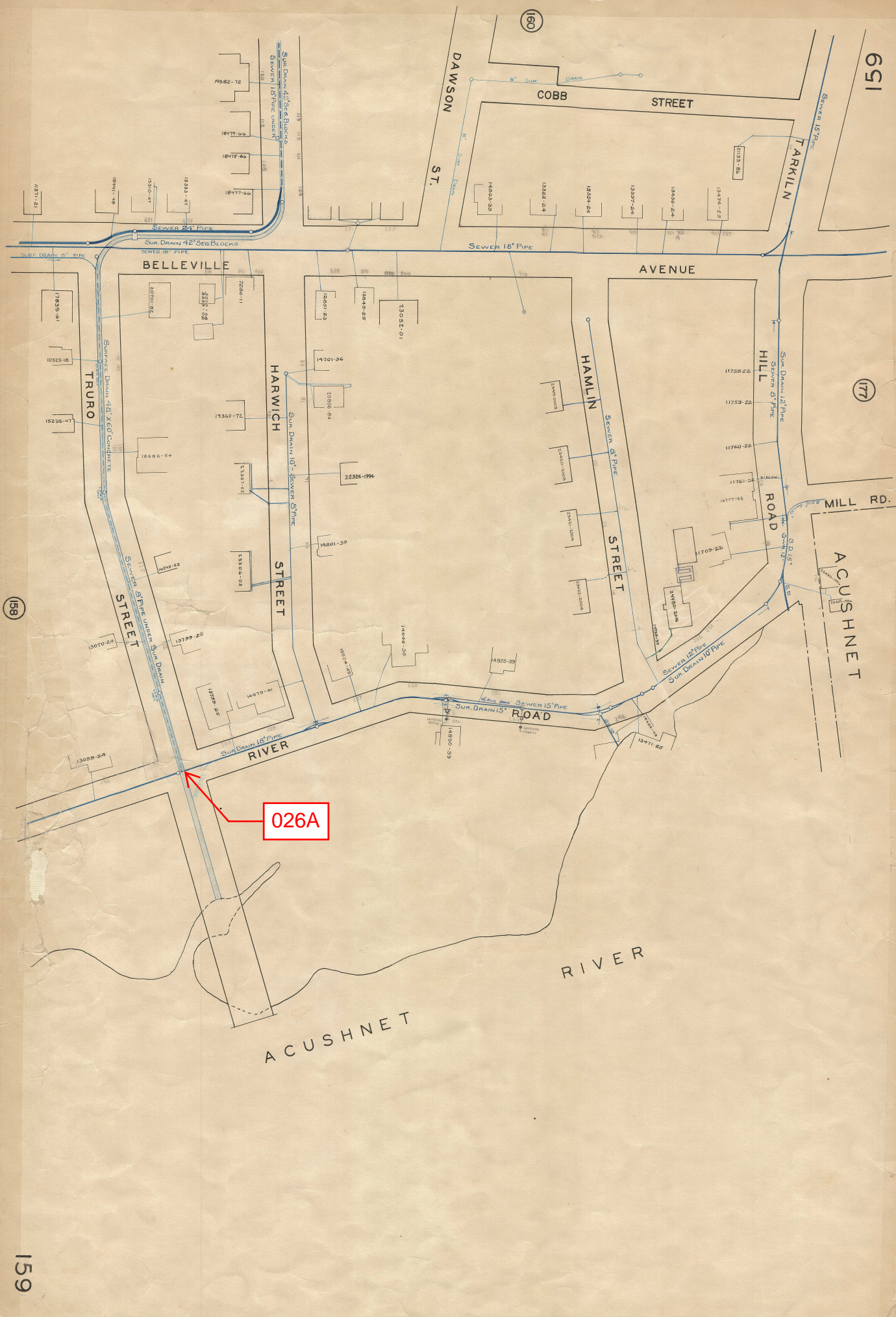
ACUSHNET

RIVER

026A

(158)

159



REGULATOR FIELD PHOTOS

Figure 1



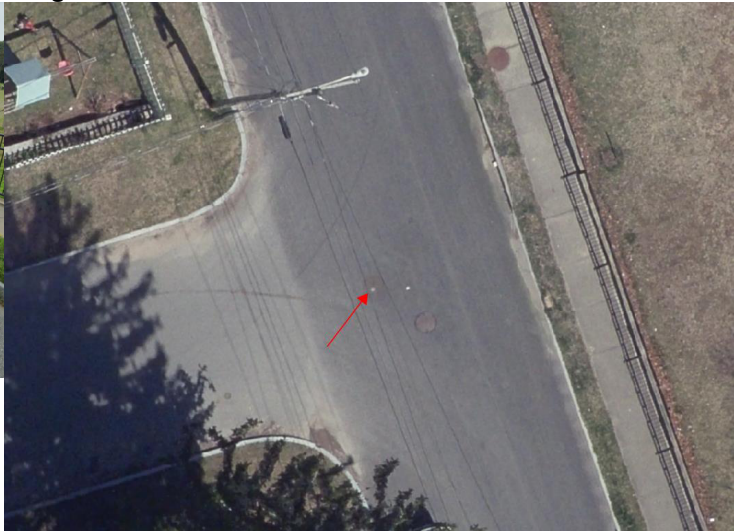
Figure 2



Figure 3



Figure 4



Descriptions:

Figure 1: Inside of R-026A. Only meter is visible.

Figure 2: Inside of R-026A. Outlet, weir, and overflow visible.

Figure 3: Google Earth snapshot facing north along River Road. Manhole marked in red.

Figure 4: Aerial location with arrow pointing to corresponding manhole.