

New Bedford Regulator Specification Sheet

Regulator #: R-024B**Location:** 183 Collette St.**Date:** 6/25/25

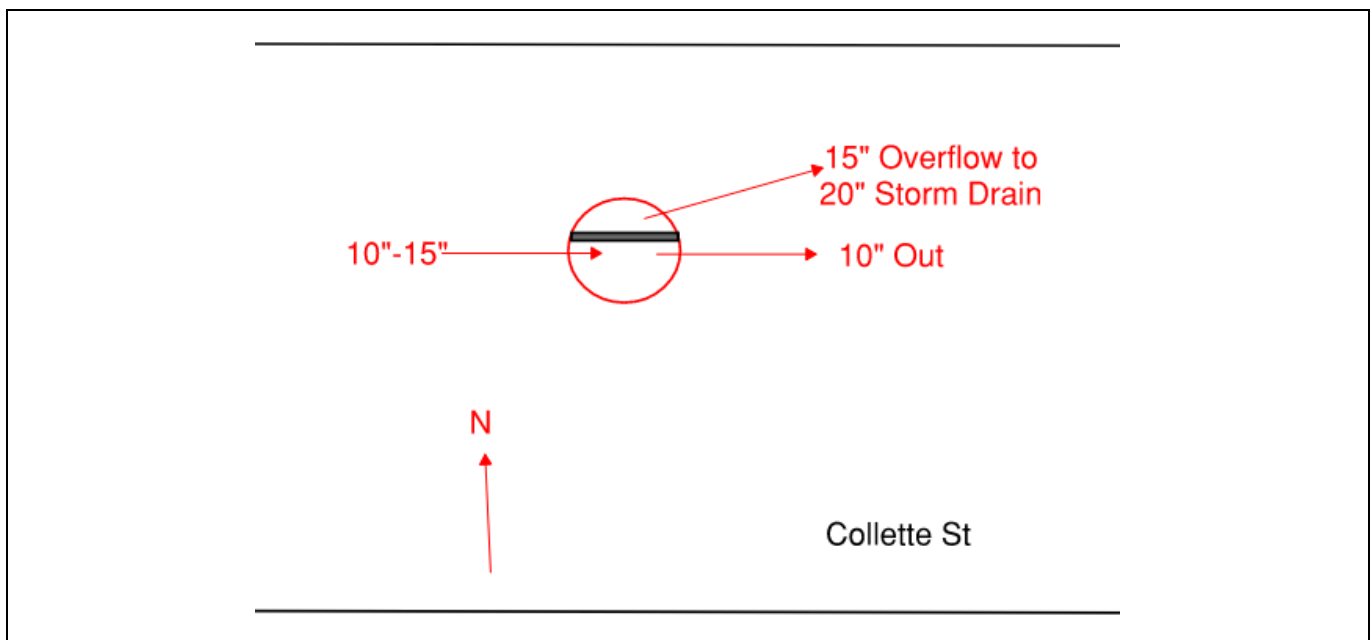
Structure Measurements

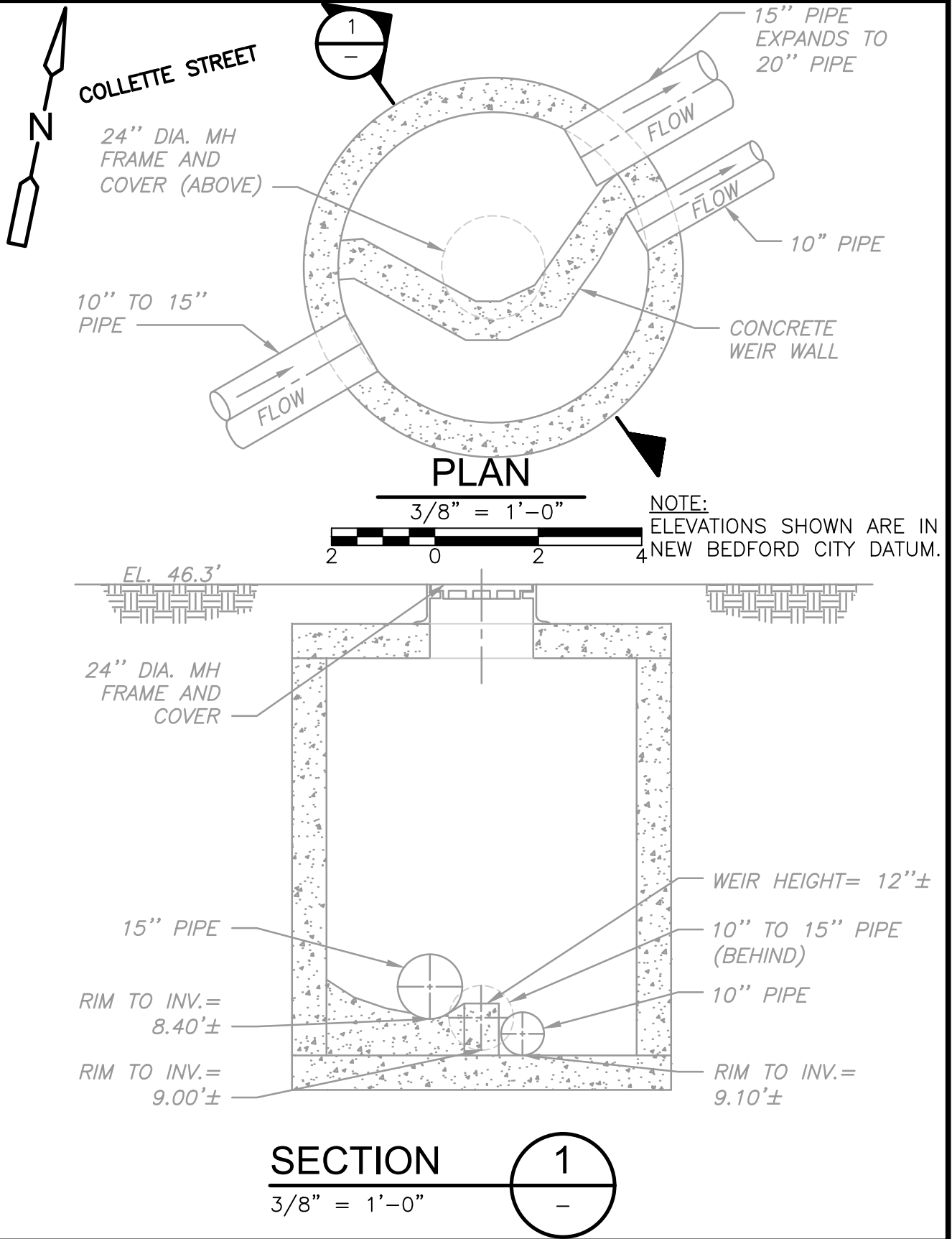
Structure Type: Single manhole**Rim Elevation (ft City Datum):** 46.3**Regulator Type:** Fixed Weir**Overflow Height (ft or in):** 12"**Rim to Top of Weir (ft):** 8**Weir Dims (ft or in):** Height: 12"**Influent pipe ø (in):** 10 or 15**Rim to Influent Invert (ft):** 9**Dry Weather Connection ø (in):** 10**Rim to Dry Weather Invert (ft):** 9.1**Overflow pipe ø (in):** 15 expands to 20**Rim to Overflow Invert (ft):** 8.4

Sensor Measurements

Block Present: No**Level Sensor Status:** Not Metered**Sensor Installation Date:** n/a**Intra-System Status:** No**Tide Gate Status:** None**Notes:** Built in August 2020. Dry weather outlet is prone to clogging. Recommend upsizing pipes.

Location Sketch:





ASHLEY

BOULEVARD

531

130

138

024B

137

129

135

136



REGULATOR FIELD PHOTOS

Figure 1

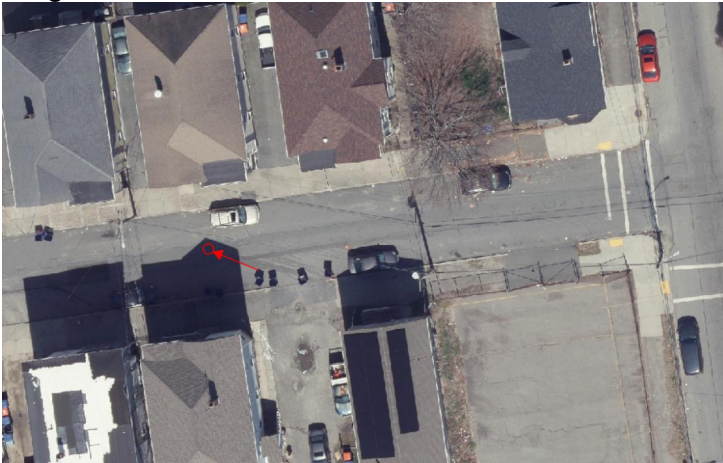


Figure 2



Descriptions:

Figure 1: Aerial location with arrow pointing to corresponding manhole.

Figure 2: Looking down into the manhole of R-024B.