

# New Bedford Regulator Specification Sheet

**Regulator #:** R-023A

**Location:** Coffin Ave. at Riverside Ave.

**Date:** 6/25/25

## Structure Measurements

**Structure Type:** Single manhole

**Rim Elevation (ft City Datum):** 5.0

**Regulator Type:** Fixed Weir

**Overflow Height (ft or in):** 22"

**Rim to Top of Weir (ft):** 5.75

**Weir Dims (ft or in):** Length: 3.58', Width: 8" Height:

22" above Dry weather outlet

**Influent pipe ø (in):** 24

**Rim to Influent Invert (ft):** 7.7

**Dry Weather Connection ø (in):** 8

**Rim to Dry Weather Invert (ft):** 8.3

**Overflow pipe ø (in):** 24

**Rim to Overflow Invert (ft):** 7.7

## Sensor Measurements

**Block Present:** Yes

**Level Sensor Status:** Metered

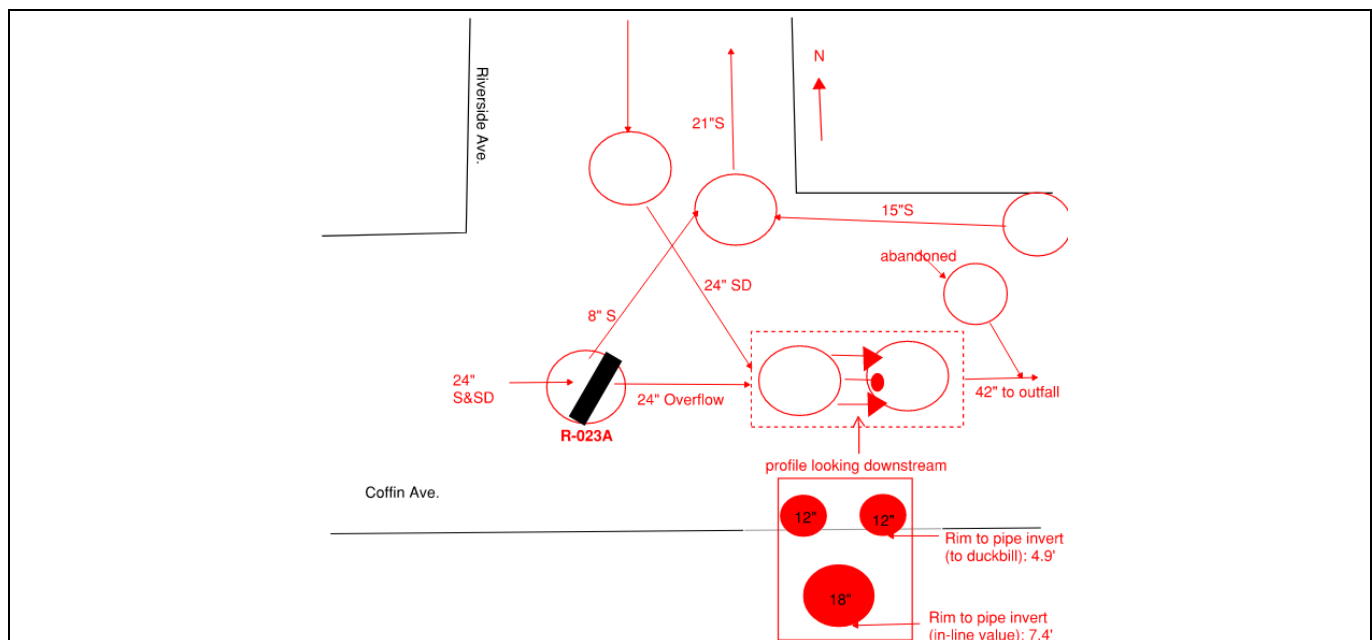
**Sensor Installation Date:** 10/21/2020

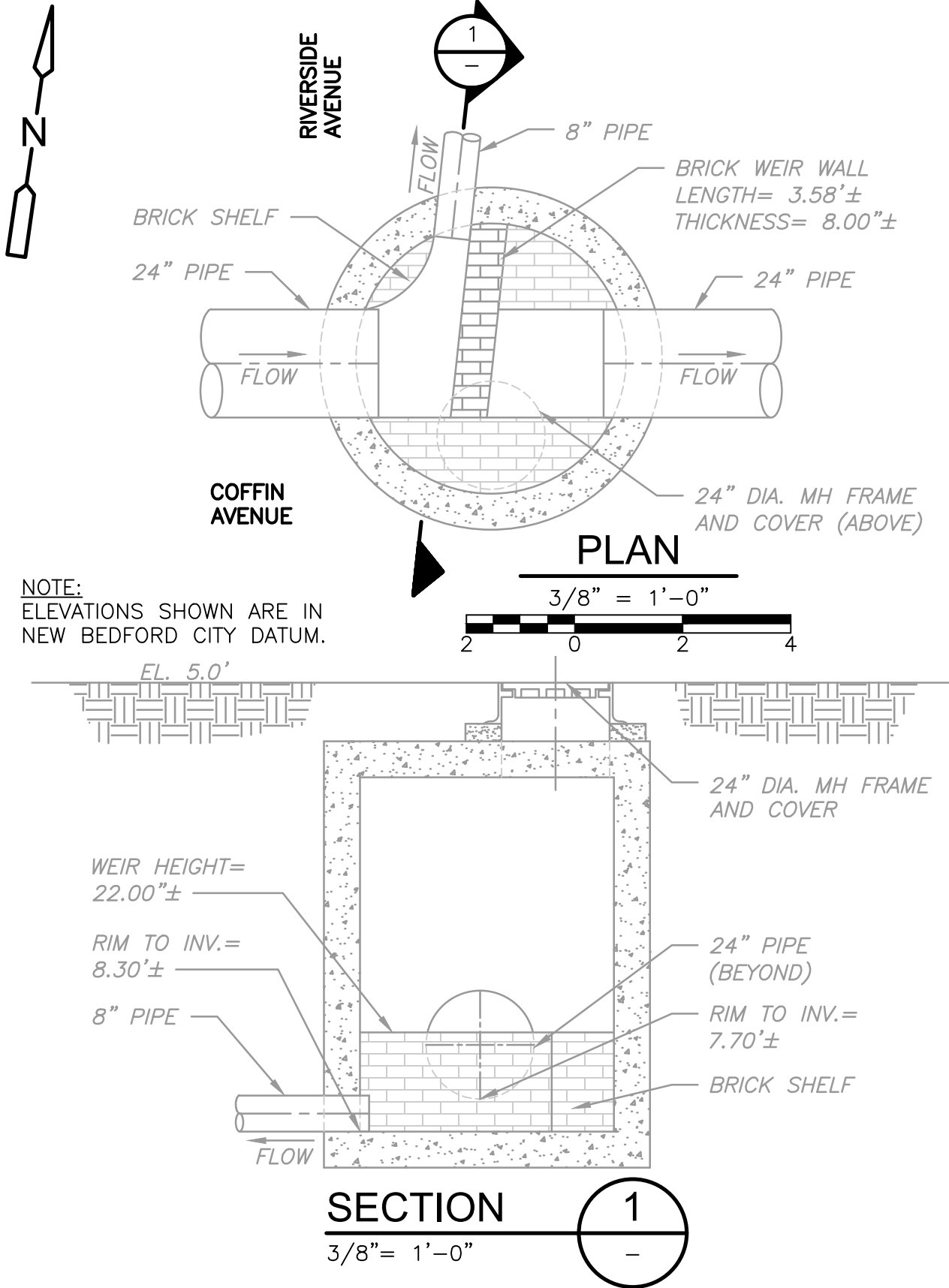
**Intra-System Status:** No

**Tide Gate Status:** None

**Notes:** Two duckbill check valves and one flap gate in chamber directly downstream of R-023A

## Location Sketch:











## REGULATOR FIELD PHOTOS

**Figure 1**



**Figure 2**



**Figure 3**



### Descriptions:

**Figure 1:** Inside of R-023A. Inflow, weir, and overflow visible.

**Figure 2:** Location of manhole facing west along Coffin Ave.

**Figure 3:** Aerial location with arrow pointing to corresponding manhole.