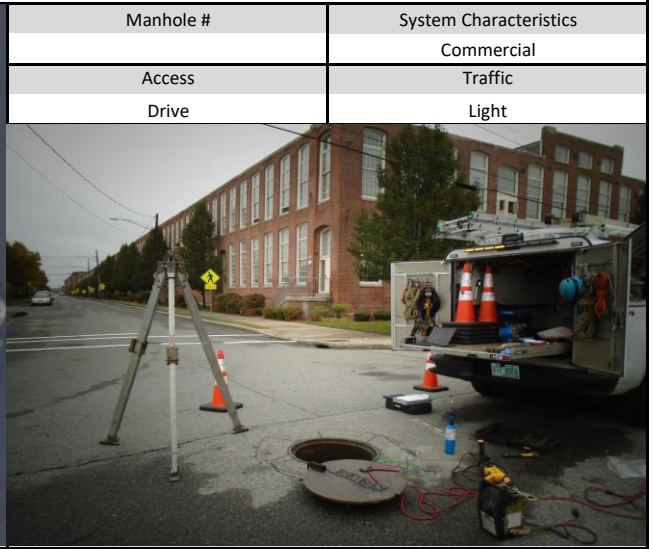
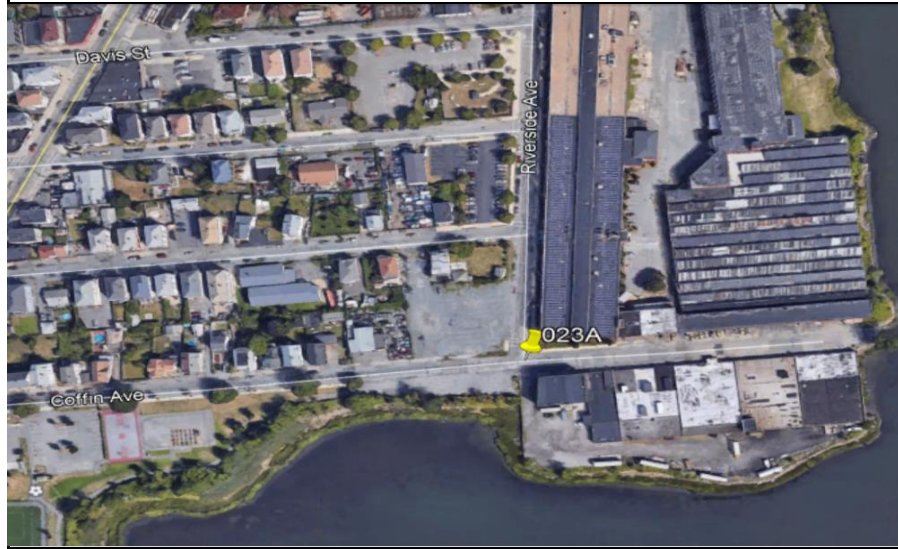


New Bedford, Ma			Site I.D.	
Flow Monitoring Site Installation Report			023A	

Site Address / Location:	Coffin Ave at Riverside Ave	Monitor Series	Location Type
		ECHO	Temporary
Site Access:	Drive up in road	Pipe Size (H x W)	Pipe Shape
		24 X 24	Circular



ADS Project Name:	New Bedford, Ma
ADS Project Number:	32673.52

Installation Information	
Installation Date:	Installation Type:
Wednesday, October 21, 2020	Level Only
Monitoring Location (Sensors):	Monitor Location:
	Manhole
Sensors / Devices:	Pressure Sensor Range (psi)
ECHO Depth	
Installation Confirmation:	
Confirmation Time:	Pipe Size (HxW)
12:20:00 PM	24 X 24
Depth of Flow (Wet DOF) (in)	Range (Air DOF) (in)
2.25	
Downlooker Physical Offset (in)	Measurement Confidence (in)
47	
Peak Velocity (fps)	Velocity Sensor Offset (in)
Silt (in)	Silt Type
0	
Hydraulic Comments:	
Manhole / Pipe Information:	
Manhole Depth (Approx. FT):	Manhole Configuration
92.25	Regulator
Manhole Material:	Manhole Condition:
Concrete	Good
Manhole Opening Diameter (in)	Manhole Diameter (Approx.):
Manhole Cover	Manhole Frame
Concealed	Normal
Active Drop Connections	Air Quality:
	Good
Pipe Material	Pipe Condition:
PVC	Good
Communication Information:	
Communication Type	Antenna Location
Wireless	Drilled Pavement / Concrete
Additional Site Info. / Comments:	
Coordinates: N 41.662885 / W -70.920396 Meter SN# 1068 IP# 166.219.171.240	