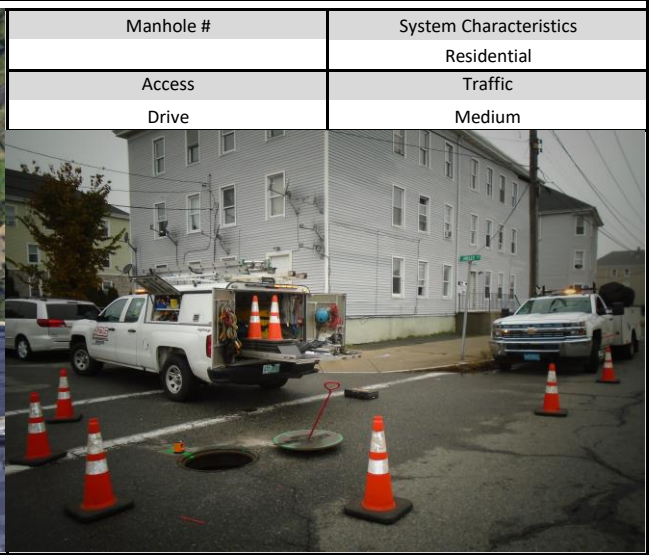
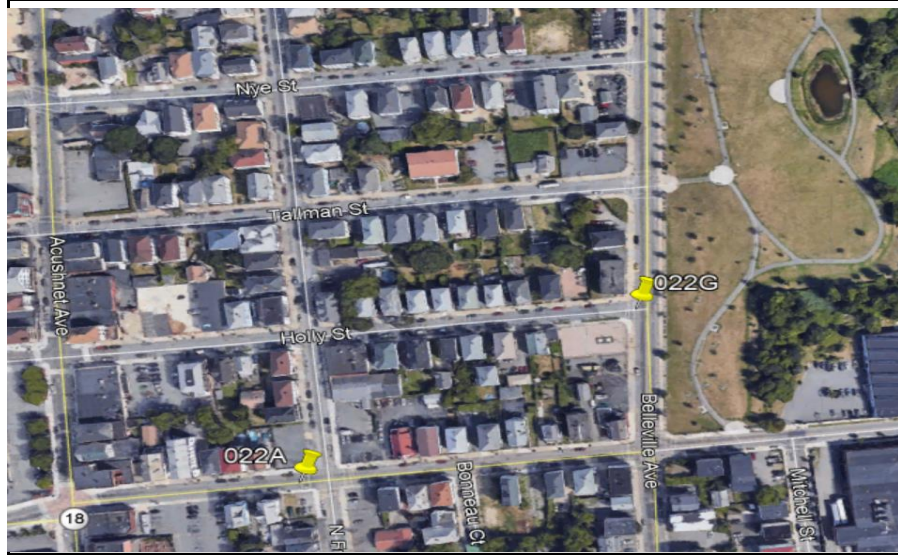


New Bedford, Ma			Site I.D.
Flow Monitoring Site Installation Report			022G

Site Address / Location:	Holly St at Belleveiw Ave.	Monitor Series	Location Type
Site Access:	Drive up in road	ECHO	Temporary
		Pipe Size (H x W)	Pipe Shape
		15 X 15	Circular



ADS Project Name:	New Bedford, Ma
ADS Project Number:	32673.52

Installation Information	
Installation Date:	Installation Type:
Wednesday, October 21, 2020	Level Only
Monitoring Location (Sensors):	Monitor Location:
	Manhole
Sensors / Devices:	Pressure Sensor Range (psi)
ECHO Depth	
Installation Confirmation:	
Confirmation Time:	Pipe Size (HxW)
11:04:00 AM	15 X 15
Depth of Flow (Wet DOF) (in)	Range (Air DOF) (in)
3	
Downlooker Physical Offset (in)	Measurement Confidence (in)
24.5	
Peak Velocity (fps)	Velocity Sensor Offset (in)
Silt (in)	Silt Type
0	
Hydraulic Comments:	
Manhole / Pipe Information:	
Manhole Depth (Approx. FT):	Manhole Configuration
84.25	CSO Flow Divider
Manhole Material:	Manhole Condition:
Brick	Good
Manhole Opening Diameter (in)	Manhole Diameter (Approx.):
Manhole Cover	Manhole Frame
Concealed	Normal
Active Drop Connections	Air Quality:
	Good
Pipe Material	Pipe Condition:
Vitrified Clay Pipe	Good
Communication Information:	
Communication Type	Antenna Location
Wireless	Drilled Pavement / Concrete
Additional Site Info. / Comments:	
Coordinates: N 41.658828 / W -70.924014 Meter SN# 1773 IP# 166.219.172.38	