

New Bedford Regulator Specification Sheet

Regulator #: R-022D

Location: Purchase St. and County St.

Date: 6/25/25

Structure Measurements

Structure Type: Single manhole

Rim Elevation (ft City Datum): 43.9

Regulator Type: Fixed Weir

Overflow Height (ft or in): 18"

Rim to Top of Weir (ft): 7.3

Weir Dims (ft or in): See CAD drawing

Influent pipe ø (in): 48

Rim to Influent Invert (ft): 8.8

Dry Weather Connection ø (in): 8

Rim to Dry Weather Invert (ft): 8.7

Overflow pipe ø (in): 48

Rim to Overflow Invert (ft): 8.8

Sensor Measurements

Block Present: Yes

Level Sensor Status: Not Metered

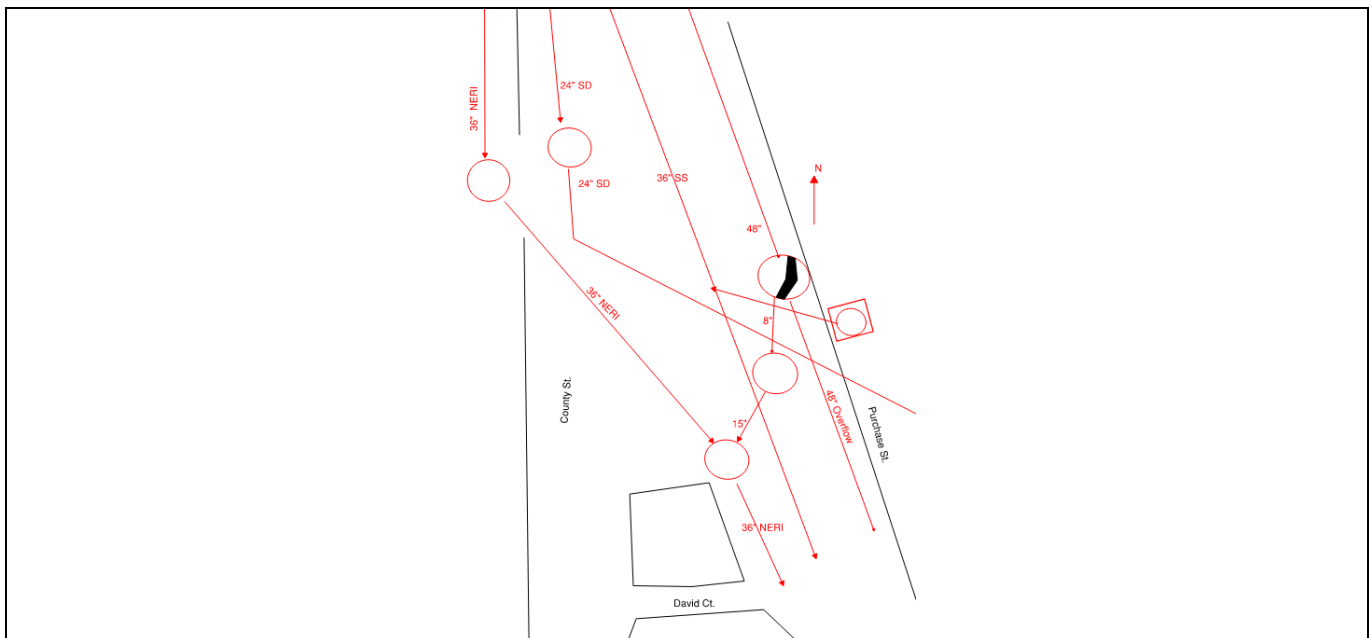
Sensor Installation Date: n/a

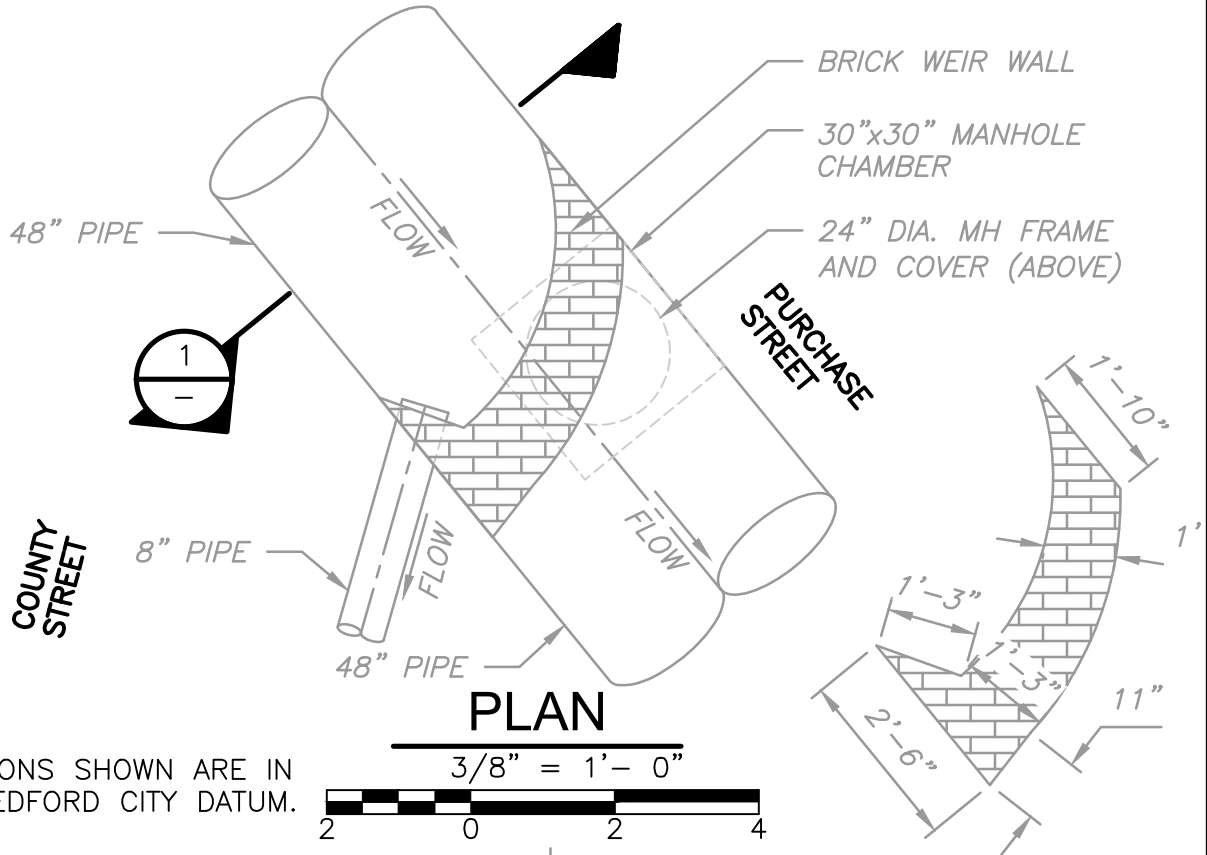
Intra-System Status: Yes

Tide Gate Status: None

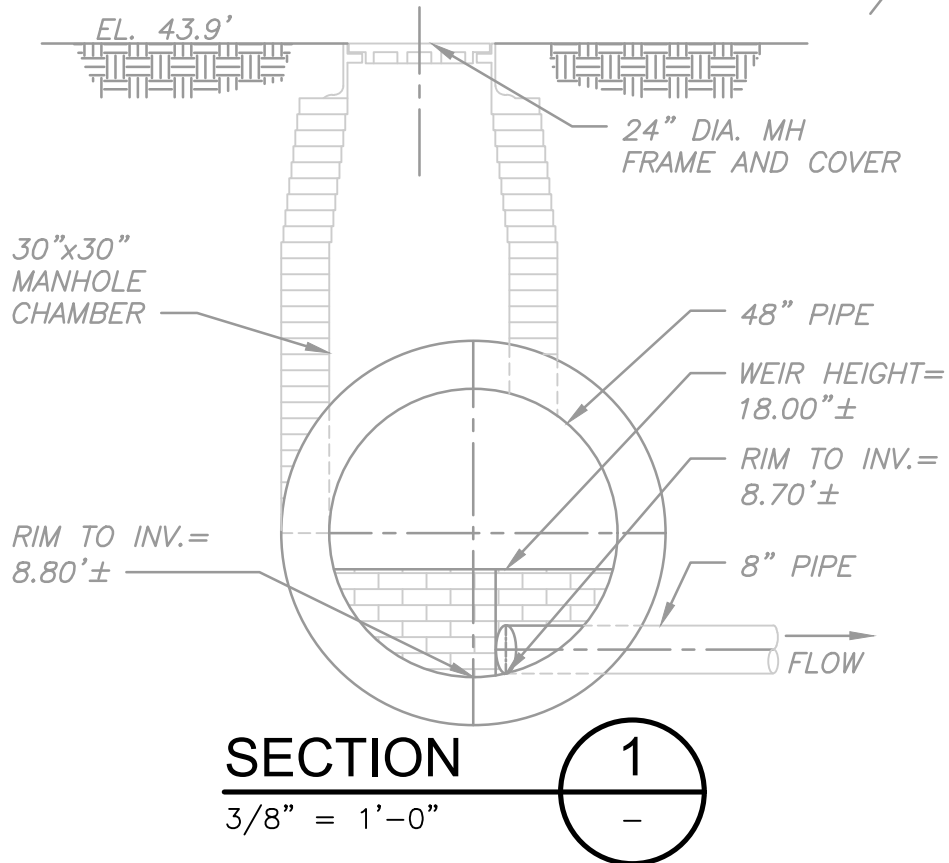
Notes:

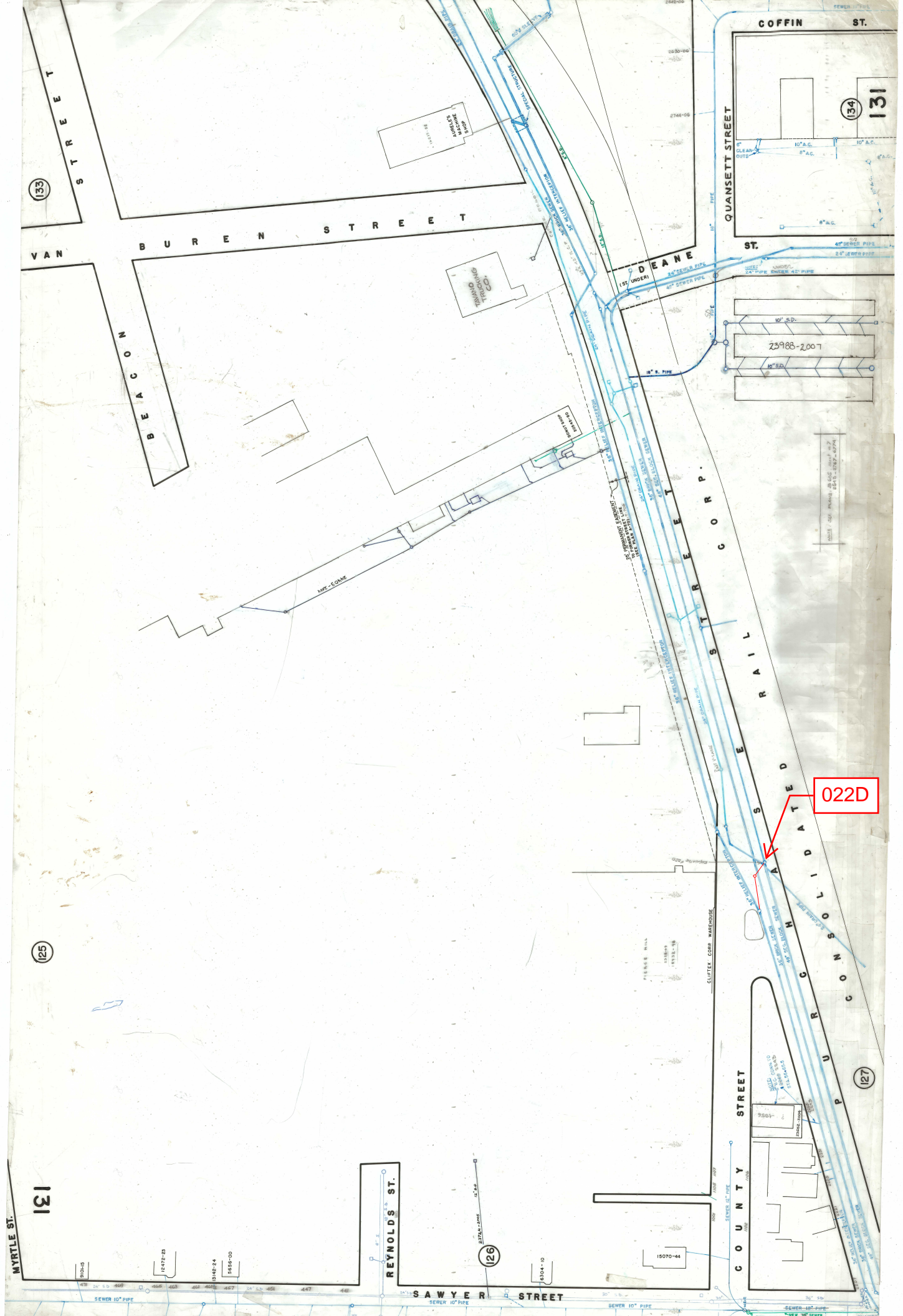
Location Sketch:





NOTE:
ELEVATIONS SHOWN ARE IN
NEW BEDFORD CITY DATUM.





REGULATOR FIELD PHOTOS

Figure 1



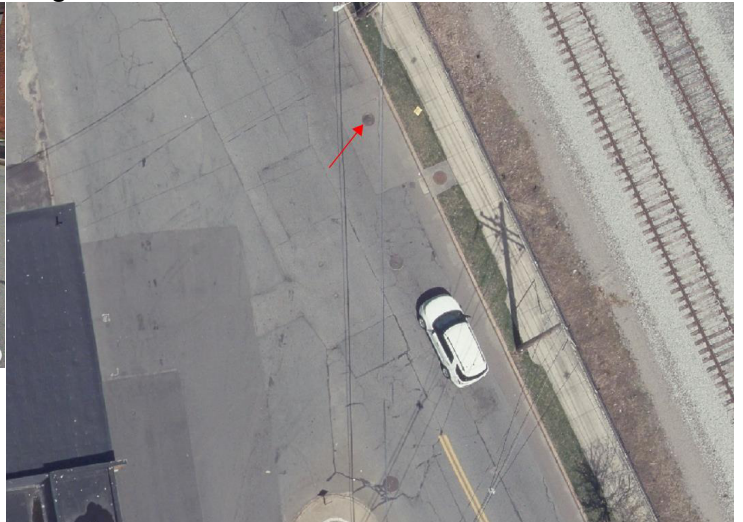
Figure 2



Figure 3



Figure 4



Descriptions:

Figure 1: Inside of R-022D. Inflow, outflow, weir, and overflow visible.

Figure 2: Inside of R-022D. Inflow, outflow, weir, and overflow visible.

Figure 3: Google Earth Snapshot facing south at County St. and Purchase St. Intersection. Manhole marked in red.

Figure 4: Aerial location with arrow pointing to corresponding manhole.