

New Bedford Regulator Specification Sheet

Regulator #: R-022A

Location: Sawyer St. and North Front St.

Date: 6/25/25

Structure Measurements

Structure Type: Single manhole

Rim Elevation (ft City Datum): 20.5

Regulator Type: Fixed Weir

Overflow Height (ft or in): 1.66'

Rim to Top of Weir (ft): 13.64

Weir Dims (ft or in): Length: 4.16', Width: 8", Height:

1.66' above inlet elevation

Influent pipe ø (in): 48

Rim to Influent Invert (ft): 15.3

Dry Weather Connection ø (in): 6" orifice to 12" sewer

Rim to Dry Weather Invert (ft): 14.6

Overflow pipe ø (in): 48

Rim to Overflow Invert (ft): 15.4

Sensor Measurements

Block Present: Yes

Level Sensor Status: Metered

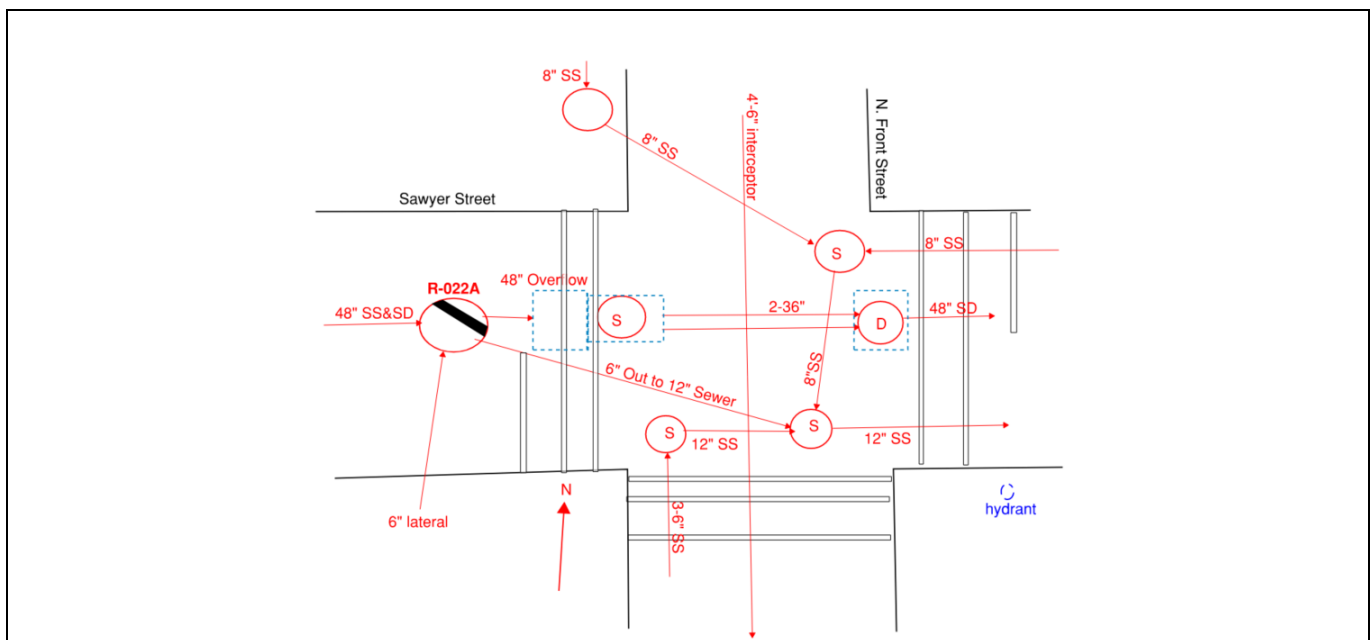
Sensor Installation Date: 10/20/2020

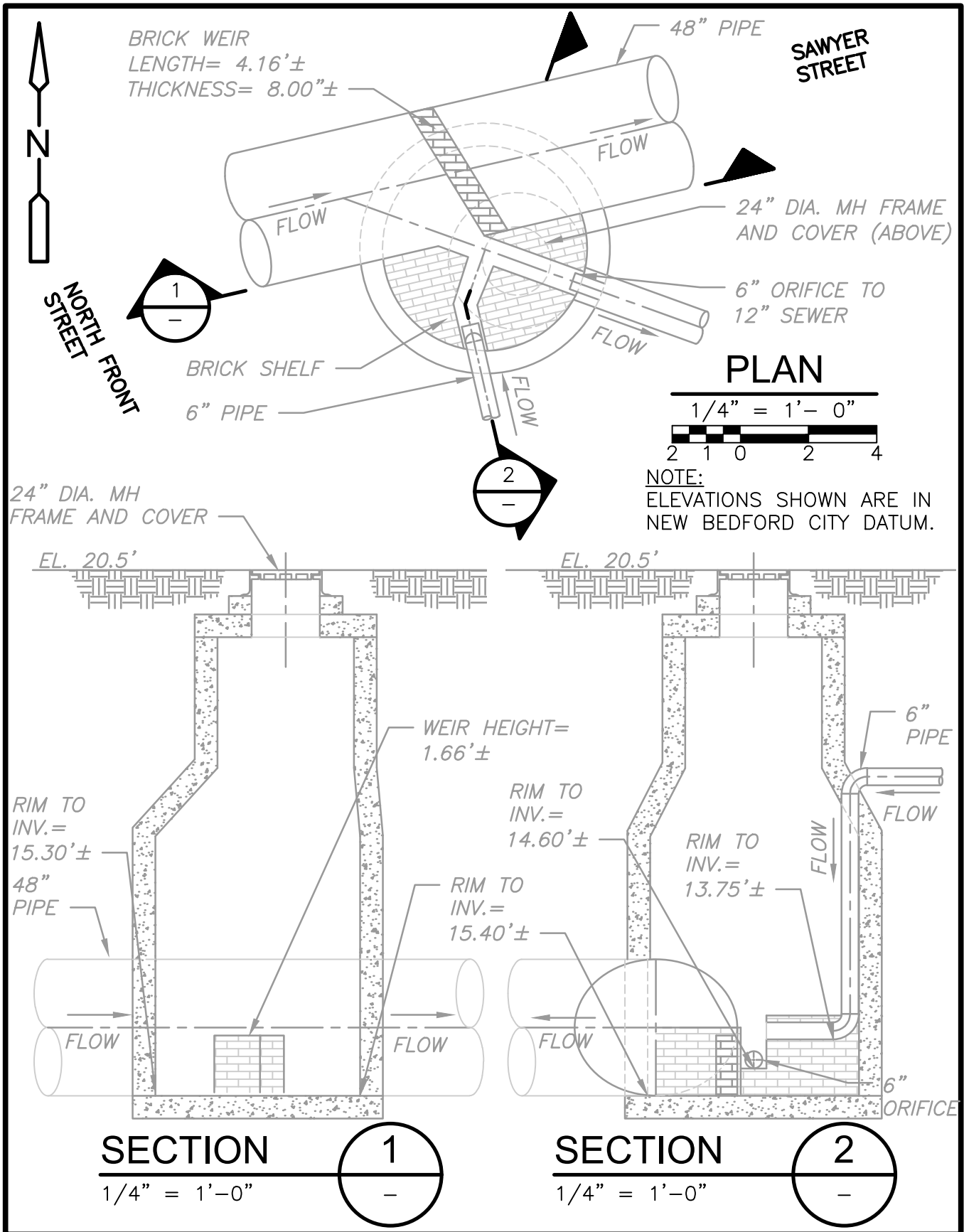
Intra-System Status: No

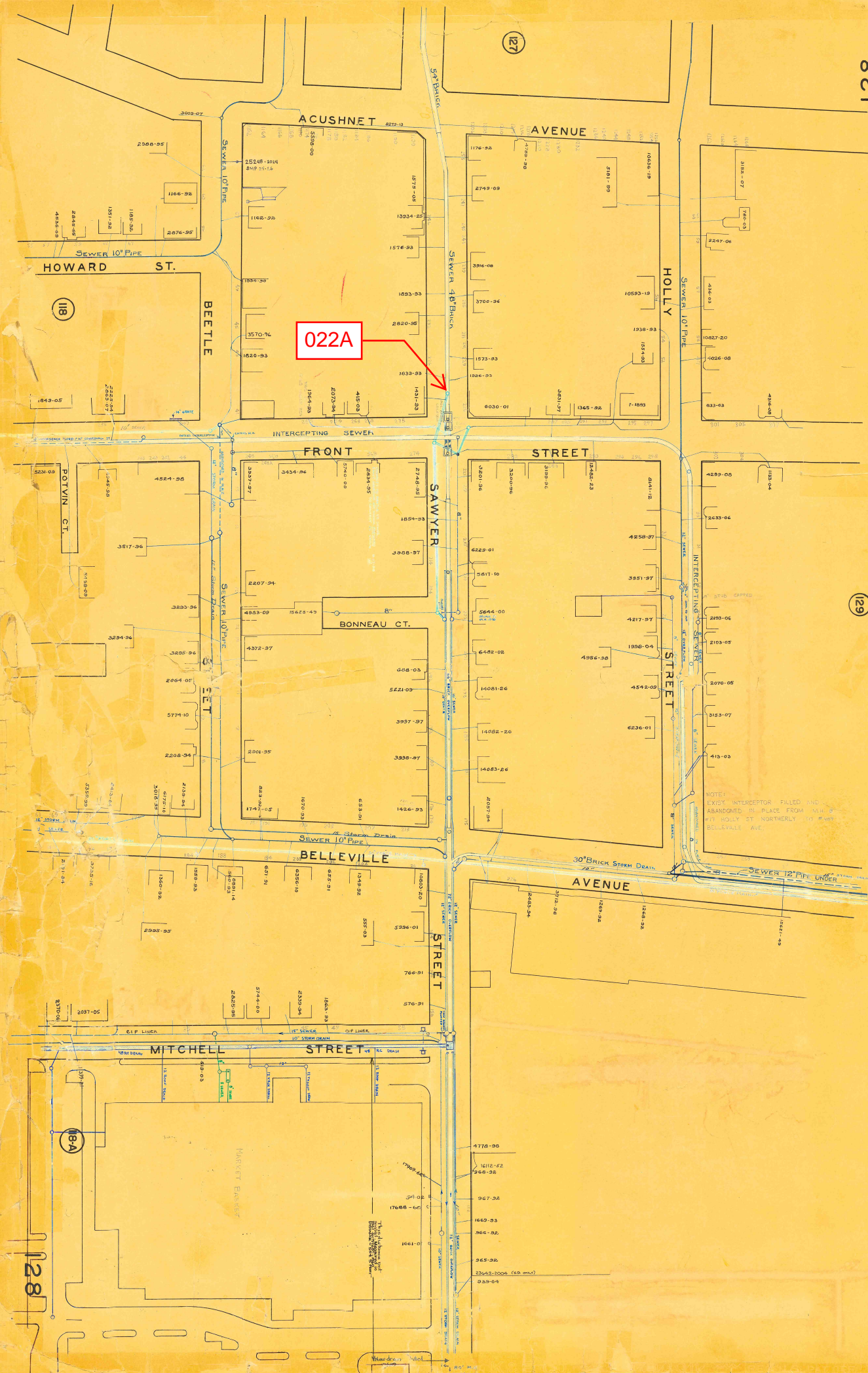
Tide Gate Status: None

Notes:

Location Sketch:







REGULATOR FIELD PHOTOS

Figure 1



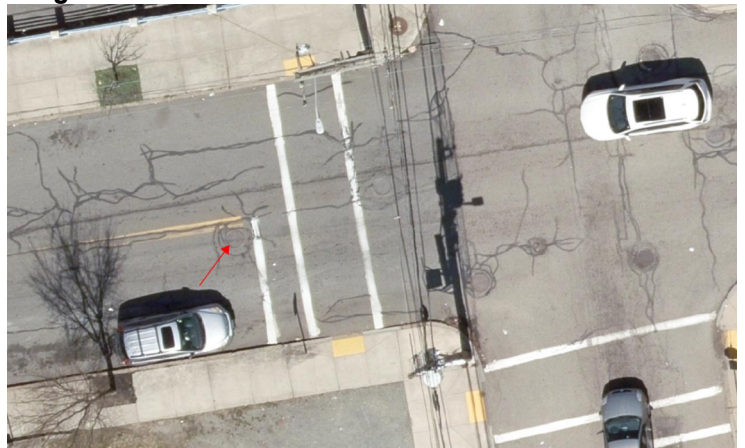
Figure 2



Figure 3



Figure 4



Descriptions:

Figure 1: Inside of R-022A. Inflows, outflow, weir, and overflow visible.

Figure 2: Inside of R-022A. Inflows, outflow, weir, and overflow visible.

Figure 3: Location of manhole, facing north towards Royal Cafe on N. Front Street.

Figure 4: Aerial location with arrow pointing to corresponding manhole.