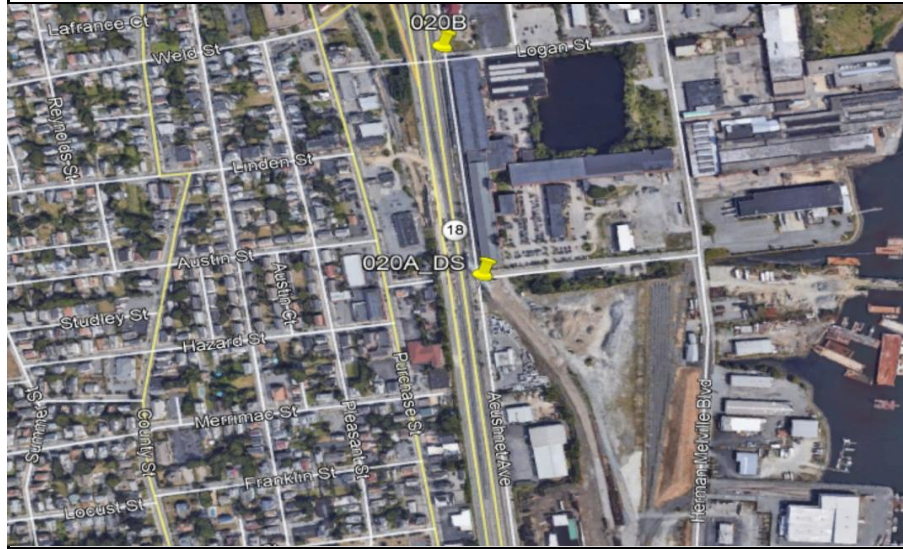


New Bedford, Ma			Site I.D.	
Flow Monitoring Site Installation Report			020A_DS	

Site Address / Location:	Acushnet Ave just south of Wamsutta St	Monitor Series	Location Type
Site Access:	Drive up in Rd.	ECHO	Temporary
		Pipe Size (H x W)	Pipe Shape
		58 X 72	Rectangular



Manhole #	System Characteristics
	Commercial
Access	Traffic
Drive	Medium



ADS Project Name:	New Bedford, Ma
ADS Project Number:	32673.52

Installation Information	
Installation Date:	Installation Type:
Monday, December 7, 2020	Level Only
Monitoring Location (Sensors):	Monitor Location:
	Manhole
Sensors / Devices:	Pressure Sensor Range (psi)
ECHO Depth	
Installation Confirmation:	
Confirmation Time:	Pipe Size (HxW)
11:54:00 AM	58 X 72
Depth of Flow (Wet DOF) (in)	Range (Air DOF) (in)
5' (Concrete Debris under sensor, No flow)	
Downlooker Physical Offset (in)	Measurement Confidence (in)
Peak Velocity (fps)	Velocity Sensor Offset (in)
Silt (in)	Silt Type
0	
Hydraulic Comments:	
Manhole / Pipe Information:	
Manhole Depth (Approx. FT):	Manhole Configuration
61"	Common Trench
Manhole Material:	Manhole Condition:
Concrete	Good
Manhole Opening Diameter (in)	Manhole Diameter (Approx.):
Manhole Cover	Manhole Frame
Vented	Normal
Active Drop Connections	Air Quality:
	Good
Pipe Material	Pipe Condition:
Concrete	Good
Communication Information:	
Communication Type	Antenna Location
Wireless	Drilled Pavement / Concrete
Additional Site Info. / Comments:	
Coordinates: N 41.648385 / W -70.927219 Meter SN# 35410 IP# 10.4.109.9	