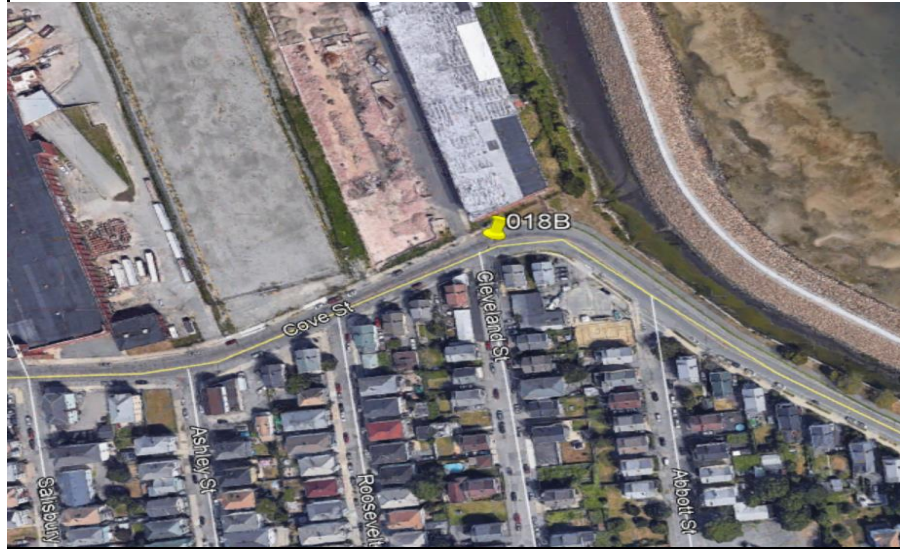


New Bedford, Ma			Site I.D.	
Flow Monitoring Site Installation Report			018B	

Site Address / Location:	Cove St at Cleveland St	Monitor Series	Location Type
Site Access:	Drive up in road	ECHO	Temporary
		Pipe Size (H x W)	Pipe Shape
		18 X 18	Circular



Manhole #	System Characteristics
	Residential
Access	Traffic
Drive	Medium



ADS Project Name:	New Bedford, Ma
ADS Project Number:	32673.52

Installation Information	
Installation Date:	Installation Type:
Tuesday, October 20, 2020	Level Only
Monitoring Location (Sensors):	Monitor Location:
	Manhole
Sensors / Devices:	Pressure Sensor Range (psi)
ECHO Depth	
Installation Confirmation:	
Confirmation Time:	Pipe Size (HxW)
11:45:00 AM	18 X 18
Depth of Flow (Wet DOF) (in)	Range (Air DOF) (in)
2	
Downlooker Physical Offset (in)	Measurement Confidence (in)
15.38	
Peak Velocity (fps)	Velocity Sensor Offset (in)
Silt (in)	Silt Type
0	
Hydraulic Comments:	
Manhole / Pipe Information:	
Manhole Depth (Approx. FT):	Manhole Configuration
73.63	CSO Flow Divider
Manhole Material:	Manhole Condition:
Block	Good
Manhole Opening Diameter (in)	Manhole Diameter (Approx.):
Manhole Cover	Manhole Frame
Concealed	Normal
Active Drop Connections	Air Quality:
	Good
Pipe Material	Pipe Condition:
Vitrified Clay Pipe	Good
Communication Information:	
Communication Type	Antenna Location
Wireless	Drilled Pavement / Concrete
Additional Site Info. / Comments:	
Coordinates: N 41.616859 / W -70.914054 Meter SN# 1006 IP# 107.80.27.19	
Detail needed at this site	