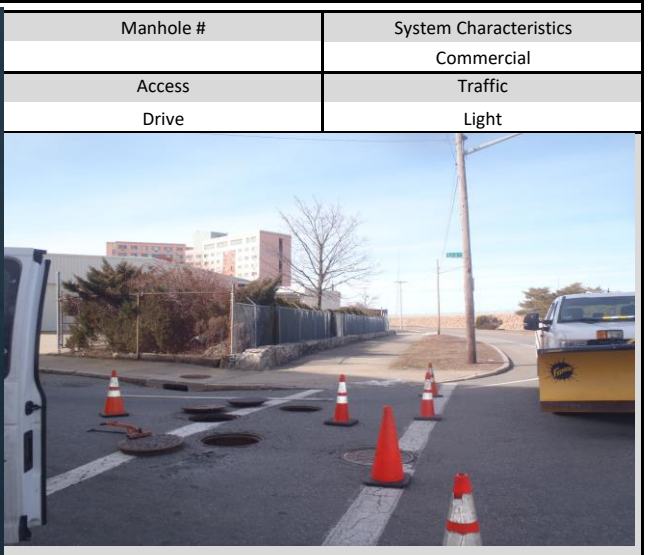
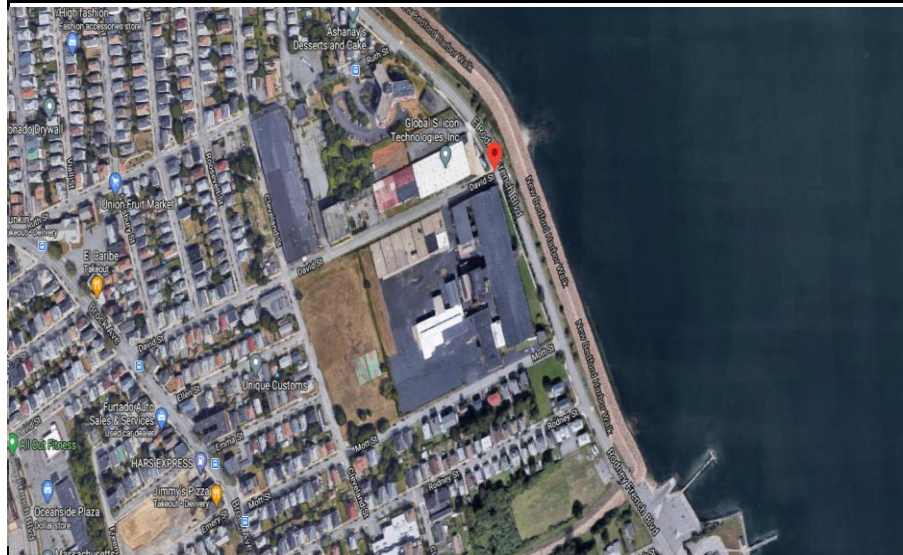


New Bedford, Ma			Site I.D.	
Flow Monitoring Site Installation Report			017C	

Site Address / Location:	David St at East Rodney French	Monitor Series	Location Type
Site Access:	Drive up on side of road	ECHO	Temporary
		Pipe Size (H x W)	Pipe Shape
		36x36	Circular



ADS Project Name:	New Bedford, Ma
ADS Project Number:	32673.52

Installation Information	
Installation Date:	Installation Type:
Wednesday, February 17, 2021	Level Only
Monitoring Location (Sensors):	Monitor Location:
	Manhole
Sensors / Devices:	Pressure Sensor Range (psi)
ECHO Depth	
Installation Confirmation:	
Confirmation Time:	Pipe Size (HxW)
12:00:00 PM	36x36
Depth of Flow (Wet DOF) (in)	Range (Air DOF) (in)
2.6	
Downlooker Physical Offset (in)	Measurement Confidence (in)
22	
Peak Velocity (fps)	Velocity Sensor Offset (in)
Silt (in)	Silt Type
0	
Hydraulic Comments:	
Manhole / Pipe Information:	
Manhole Depth (Approx. FT):	Manhole Configuration
8	CSO Flow Divider
Manhole Material:	Manhole Condition:
Concrete	Good
Manhole Opening Diameter (in)	Manhole Diameter (Approx.):
Manhole Cover	Manhole Frame
Concealed	Normal
Active Drop Connections	Air Quality:
	Good
Pipe Material	Pipe Condition:
Concrete	Good
Communication Information:	
Communication Type	Antenna Location
Wireless	Drilled Pavement / Concrete
Additional Site Info. / Comments:	
41.614332,-70.909448 OF Trigger: 16.75"	