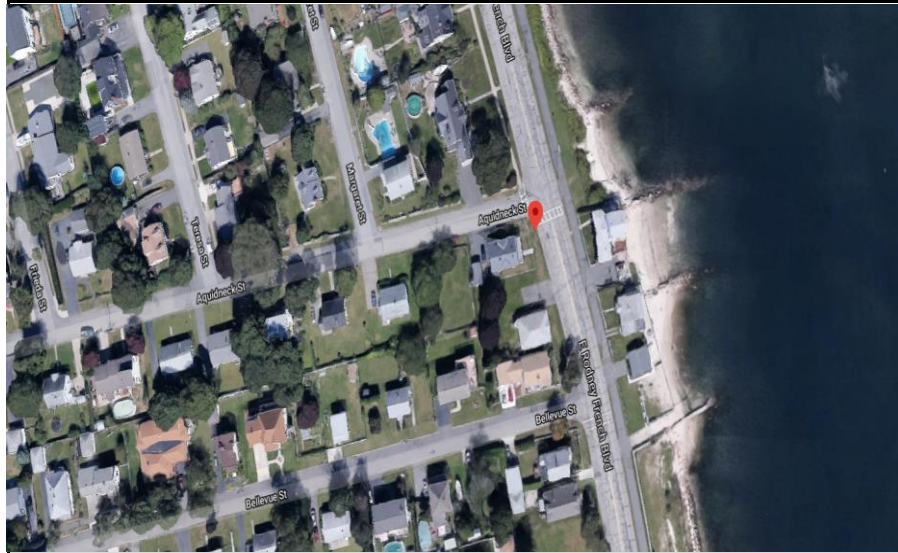


New Bedford, Ma			Site I.D.	
Flow Monitoring Site Installation Report			013A	

Site Address / Location:	Aquidneck St at East Rodney French	Monitor Series	Location Type
Site Access:	Drive up on side of road	ECHO	Temporary
		Pipe Size (H x W)	Pipe Shape
		12x12	Circular



Manhole #	System Characteristics
	Commercial
Access	Traffic
Drive	Light



ADS Project Name:	New Bedford, Ma
ADS Project Number:	32673.52

Installation Information	
Installation Date:	Installation Type:
Thursday, February 18, 2021	Level Only
Monitoring Location (Sensors):	Monitor Location:
	Manhole
Sensors / Devices:	Pressure Sensor Range (psi)
ECHO Depth	
Installation Confirmation:	
Confirmation Time:	Pipe Size (HxW)
11:00:00 AM	12x12
Depth of Flow (Wet DOF) (in)	Range (Air DOF) (in)
2.34	
Downlooker Physical Offset (in)	Measurement Confidence (in)
20.25	
Peak Velocity (fps)	Velocity Sensor Offset (in)
Silt (in)	Silt Type
0	
Hydraulic Comments:	
Manhole / Pipe Information:	
Manhole Depth (Approx. FT):	Manhole Configuration
8	CSO Flow Divider
Manhole Material:	Manhole Condition:
Concrete	Good
Manhole Opening Diameter (in)	Manhole Diameter (Approx.):
24	24
Manhole Cover	Manhole Frame
Concealed	Normal
Active Drop Connections	Air Quality:
	Good
Pipe Material	Pipe Condition:
Cast Iron Pipe	Good
Communication Information:	
Communication Type	Antenna Location
Wireless	Drilled Pavement / Concrete
Additional Site Info. / Comments:	
41.603952,-70.903007 OF Trigger: 9.75	