

# New Bedford, Ma

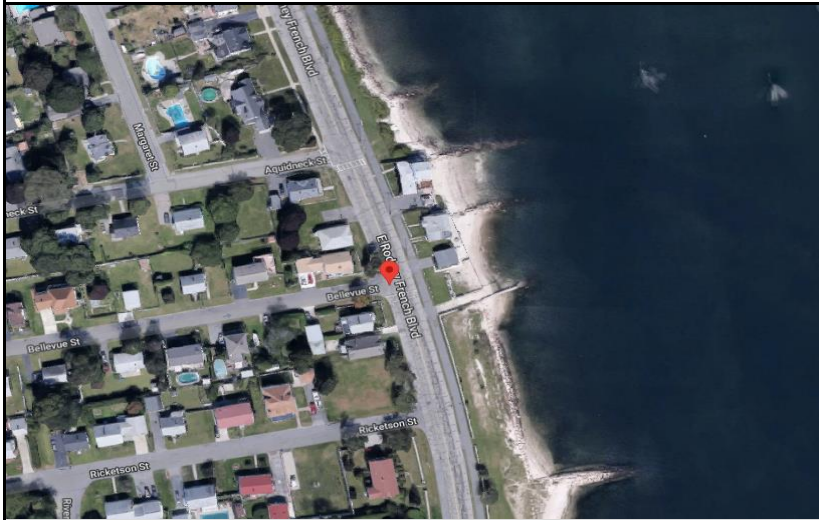


Site I.D.

## Flow Monitoring Site Installation Report

Regulator 012B

Site Address / Location:	E. Rodney French Blvd at Bellevue St	Monitor Series	ECHO	Location Type	Temporary
Site Access:	Drive	Pipe Size (H x W)	15.00x16.00	Pipe Shape	Elliptical



Manhole #	System Characteristics
Access	Commercial
Drive	Traffic
	None



### Installation Information

Installation Date:	Installation Type:
Monday, July 25, 2022	Level Only
Monitoring Location (Sensors):	Monitor Location:
Sensors / Devices:	Manhole
ECHO Depth	Pressure Sensor Range (psi)

### Installation Confirmation:

Confirmation Time:	Pipe Size (HxW)
12:45:00 PM	15.00x16.00
Depth of Flow (Wet DOF) (in)	Range (Air DOF) (in)
Downlooker Physical Offset (in)	Measurement Confidence (in)
Peak Velocity (fps)	Velocity Sensor Offset (in)
Silt (in)	Silt Type
0	

Hydraulic Comments:

### Manhole / Pipe Information:

Manhole Depth (Approx. In):	Manhole Configuration
82.83	CSO Flow Divider
Manhole Material:	Manhole Condition:
Concrete	Good
Manhole Opening Diameter (in)	Manhole Diameter (Approx.):
Manhole Cover	Manhole Frame
Concealed	Normal
Active Drop Connections	Air Quality:
Pipe Material	Good
Vitrified Clay Pipe	Pipe Condition:
	Good

### Communication Information:

Communication Type	Antenna Location
Wireless	Drilled Pavement / Concrete

### Additional Site Info. / Comments:



ADS Project Name:	New Bedford, Ma
ADS Project Number:	32673.52