

New Bedford Regulator Specification Sheet

Regulator #: R-012B

Location: E. Rodney French Blvd. and Bellevue St.

Date: 6/25/25

Structure Measurements

Structure Type: Multichamber (3)

Rim Elevation (ft City Datum): 6.1

Regulator Type: High Level Outlet

Overflow Height (ft or in): 0.6'

Rim to Top of Weir (ft): 6.5

Weir Dims (ft or in): 12x24 Opening 0.6' above inlet elevation

Influent pipe ø (in): 15, 6

Rim to Influent Invert (ft): 7.1, 7.1

Dry Weather Connection ø (in): 10

Rim to Dry Weather Invert (ft): 7.9

Overflow pipe ø (in): 18, 12

Rim to Overflow Invert (ft): 6.8 (18"), UNK (12")

Sensor Measurements

Block Present: No

Level Sensor Status: Metered

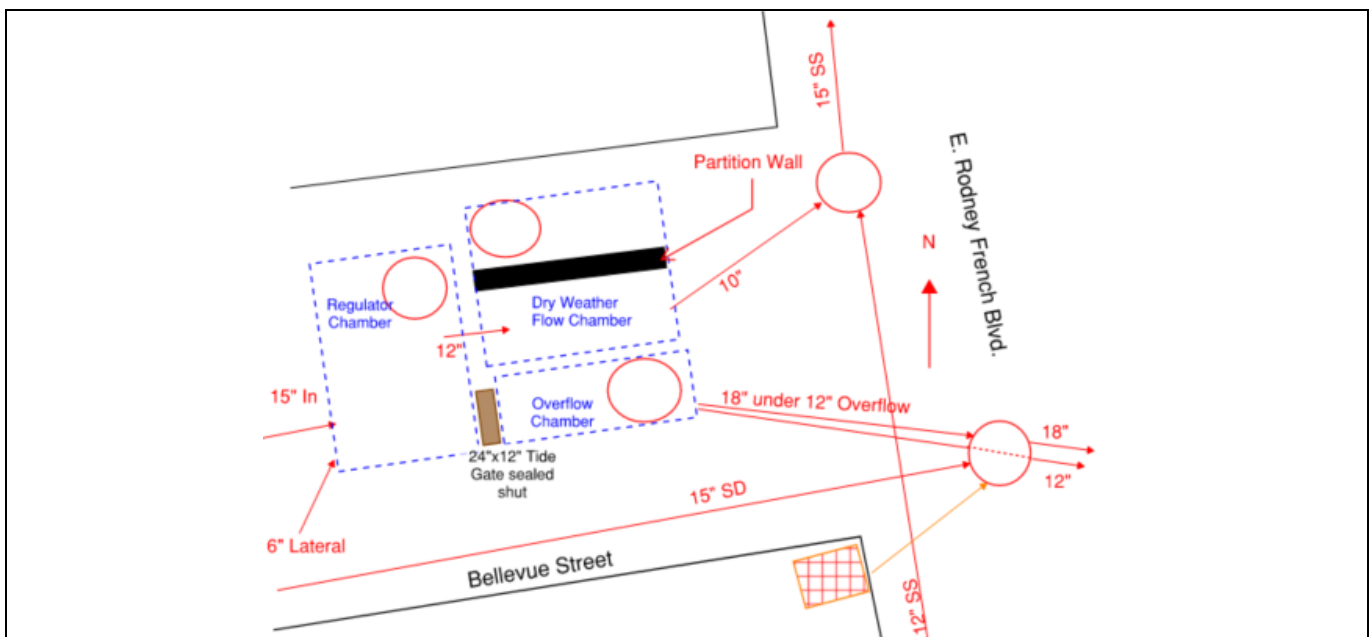
Sensor Installation Date: 7/25/2022

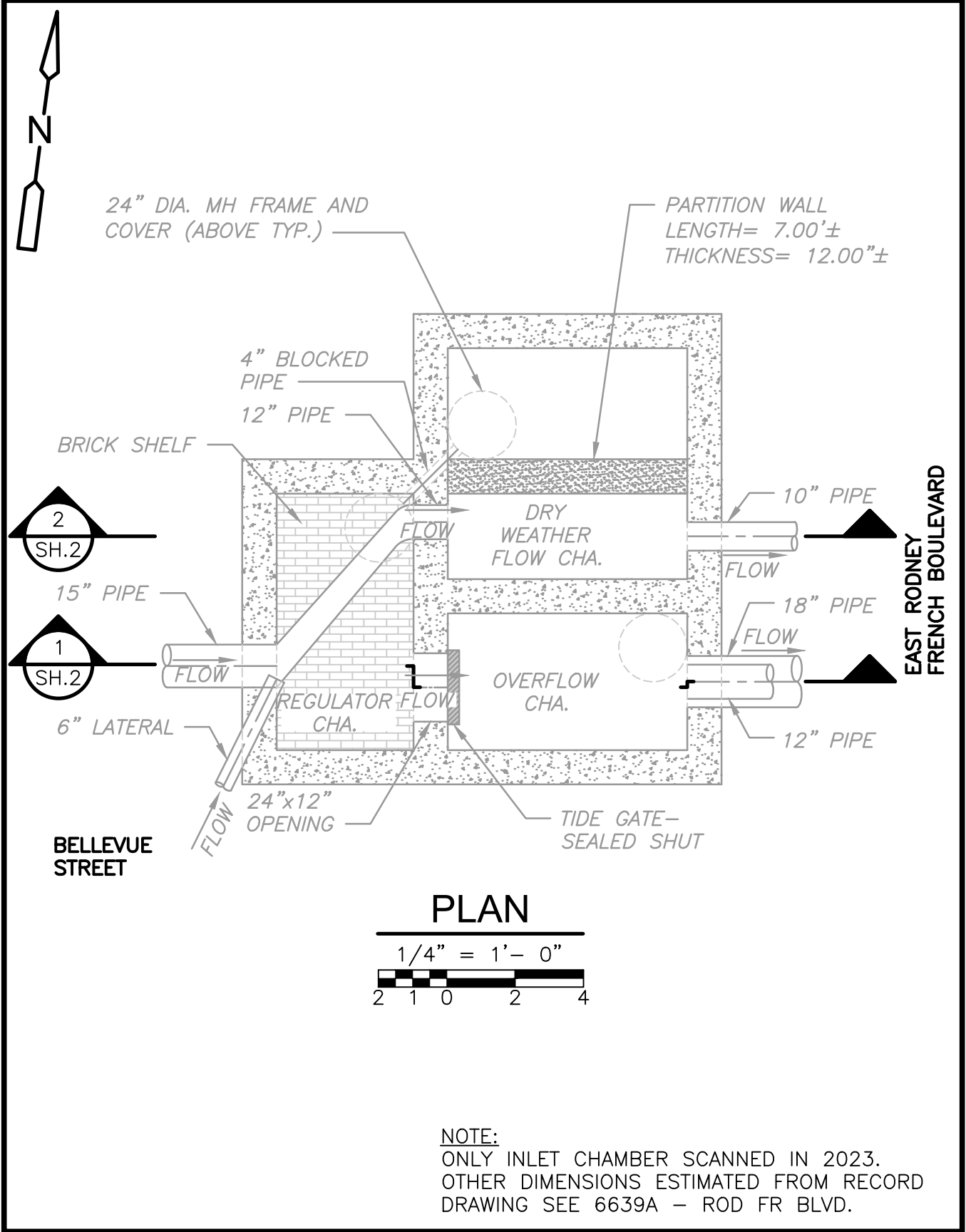
Intra-System Status: No

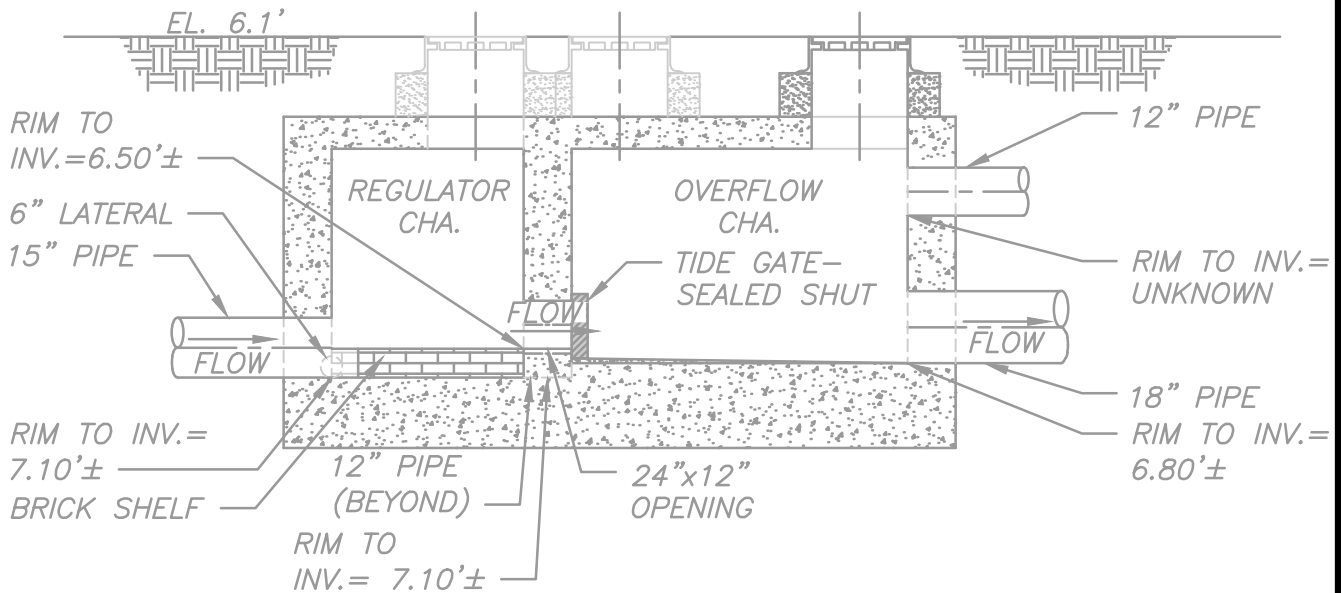
Tide Gate Status: Wooden flap gate sealed shut

Notes: Only the inlet chamber was scanned by Redzone in 2023. Other dimensions and elevations were estimated from record drawing- 6639A - ROD FR BLVD. Tide gate appears to be sealed shut, see Figure 2.

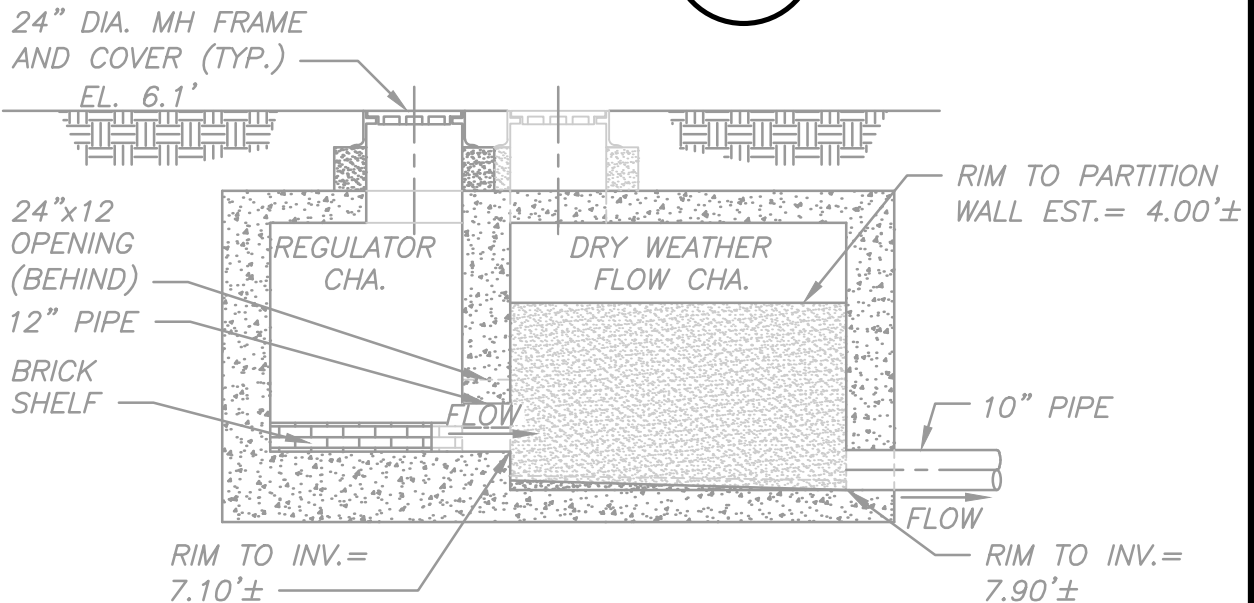
Location Sketch:







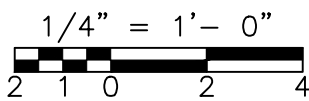
SECTION 1
1/4" = 1'-0" SH.1

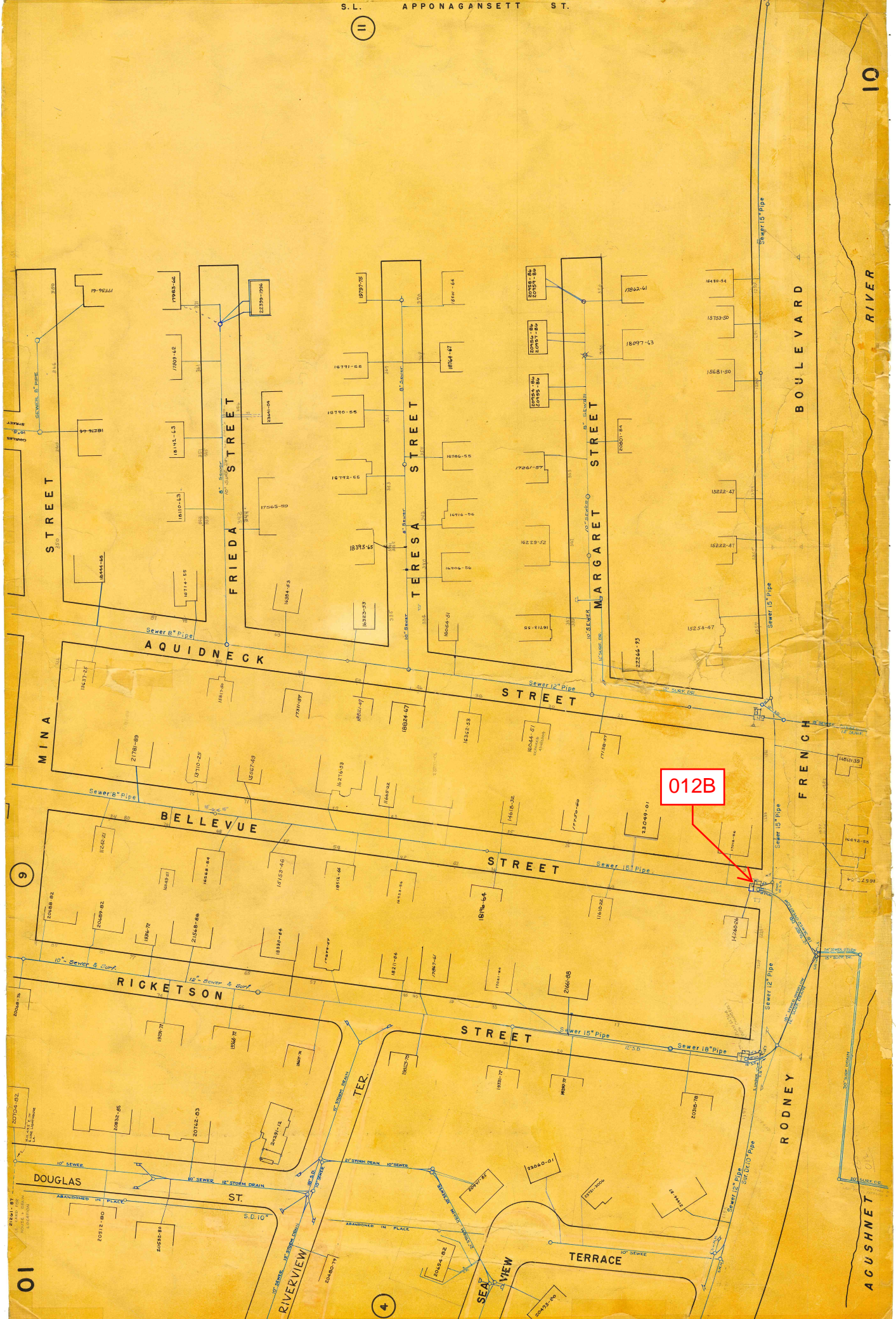


SECTION 2
1/4" = 1'-0" SH.1

NOTES:

1. ELEVATIONS SHOWN ARE IN NEW BEDFORD CITY DATUM.
2. ONLY REGULATOR CHAMBER SCANNED IN 2023.
OTHER DIMENSIONS ESTIMATED FROM RECORD
DRAWING SEE 6639A - ROD FR BLVD.





REGULATOR FIELD PHOTOS

Figure 1



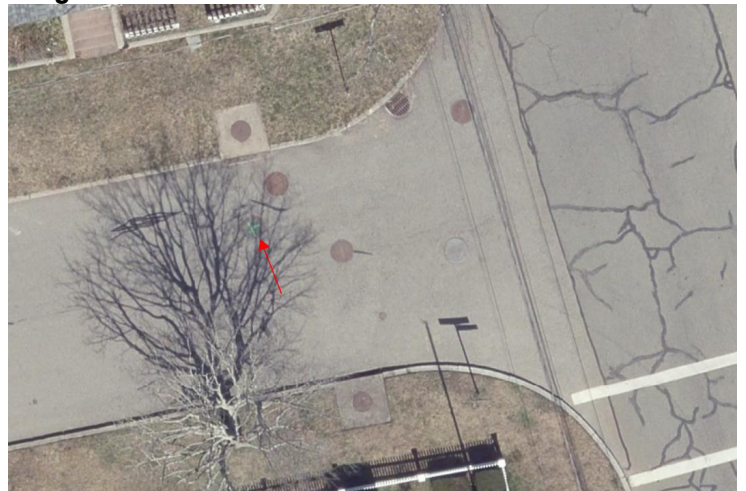
Figure 2



Figure 3



Figure 4



Descriptions:

Figure 1: Inside of R-012B. Inlet pipes, dry weather outlet, and overflow opening are visible.

Figure 2: Inside of R-012B Tide Gate Chamber. Tide Gate appears to be sealed shut.

Figure 3: Location of manhole facing northeast at the east end of Bellevue Street.

Figure 4: Aerial location with arrow pointing to corresponding manhole.