

New Bedford Regulator Specification Sheet

Regulator #: R-012A

Location: Ricketson St. at E. Rodney French Blvd.

Date: 6/25/25

Structure Measurements

Structure Type: Multichamber (3)

Rim Elevation (ft City Datum): 6.1

Regulator Type: High Level Outlet

Overflow Height (ft or in): NA

Rim to Top of Weir (ft): NA

Weir Dims (ft or in): overflow bricked up

Influent pipe ø (in): 18

Rim to Influent Invert (ft): 7.4

Dry Weather Connection ø (in): 10

Rim to Dry Weather Invert (ft): 8.3

Overflow pipe ø (in): 18

Rim to Overflow Invert (ft): 7.5

Sensor Measurements

Block Present: No

Level Sensor Status: Metered

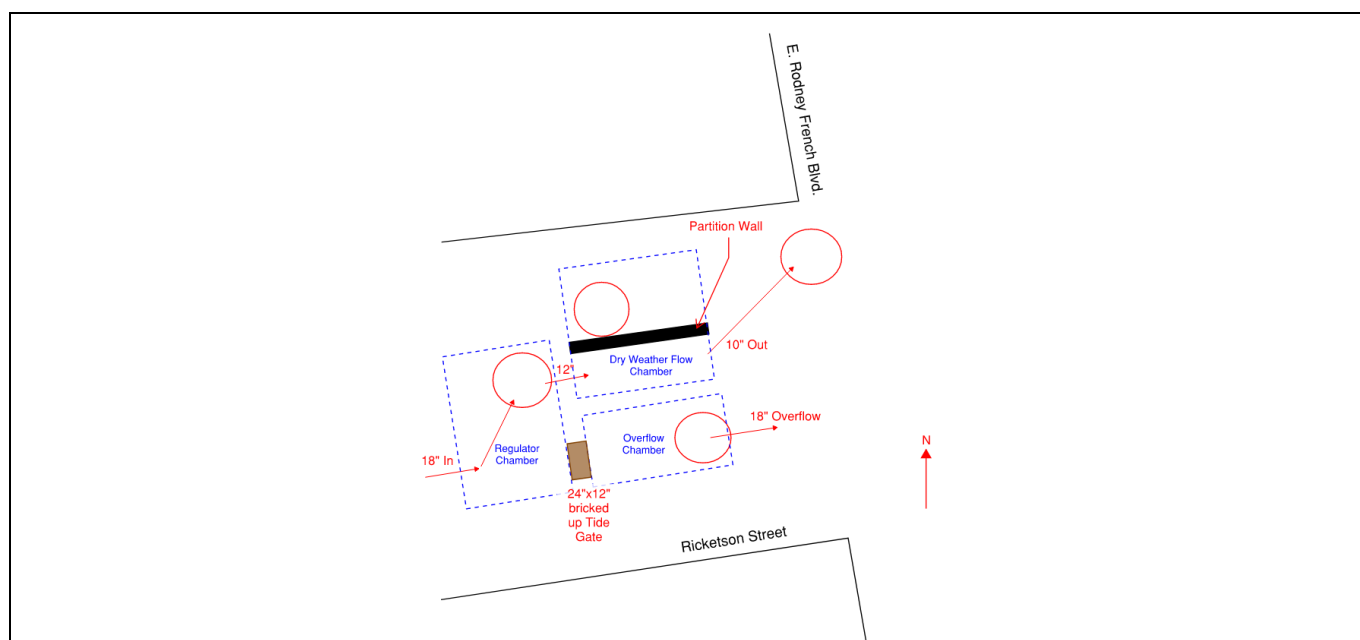
Sensor Installation Date: 2/18/2021

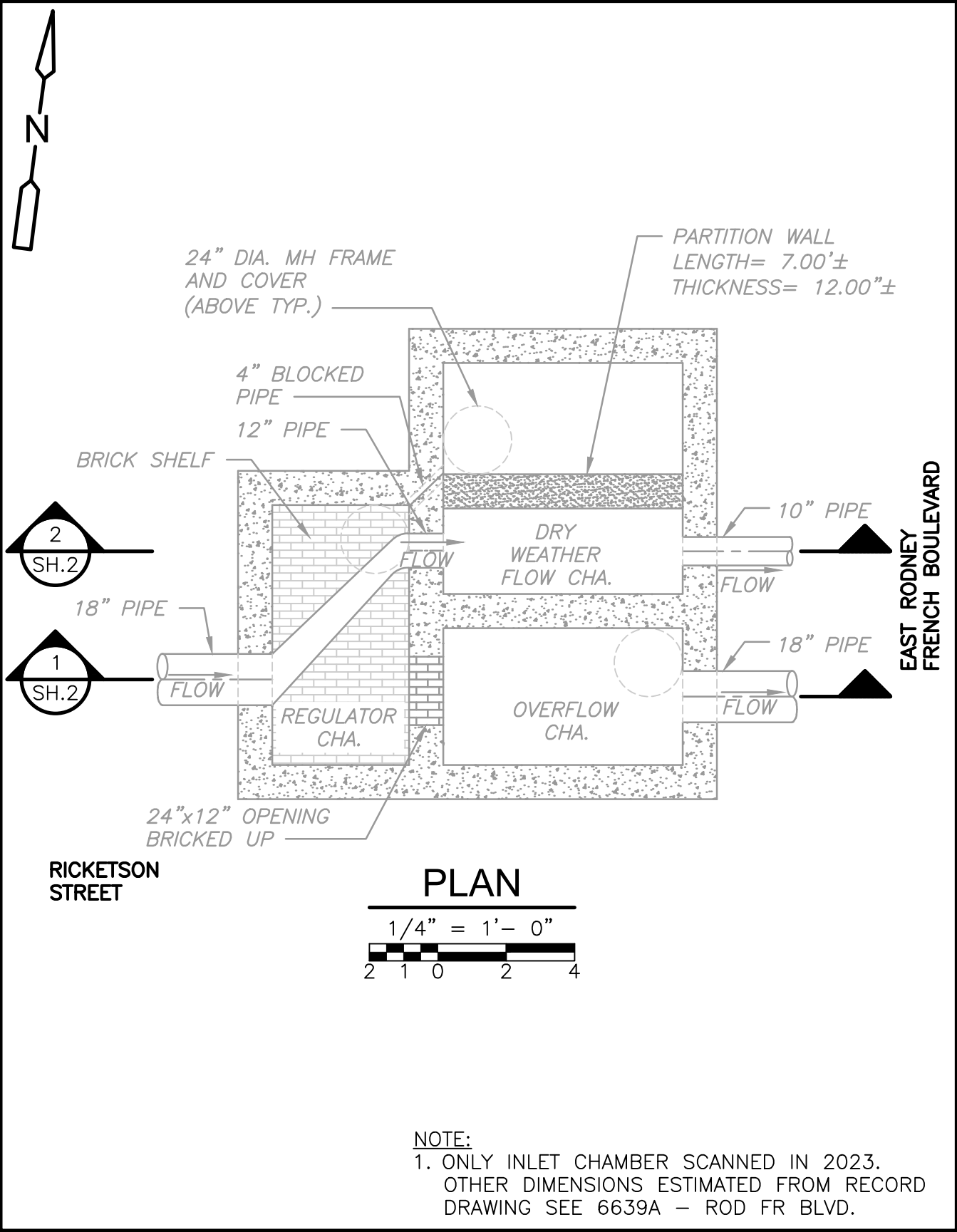
Intra-System Status: No

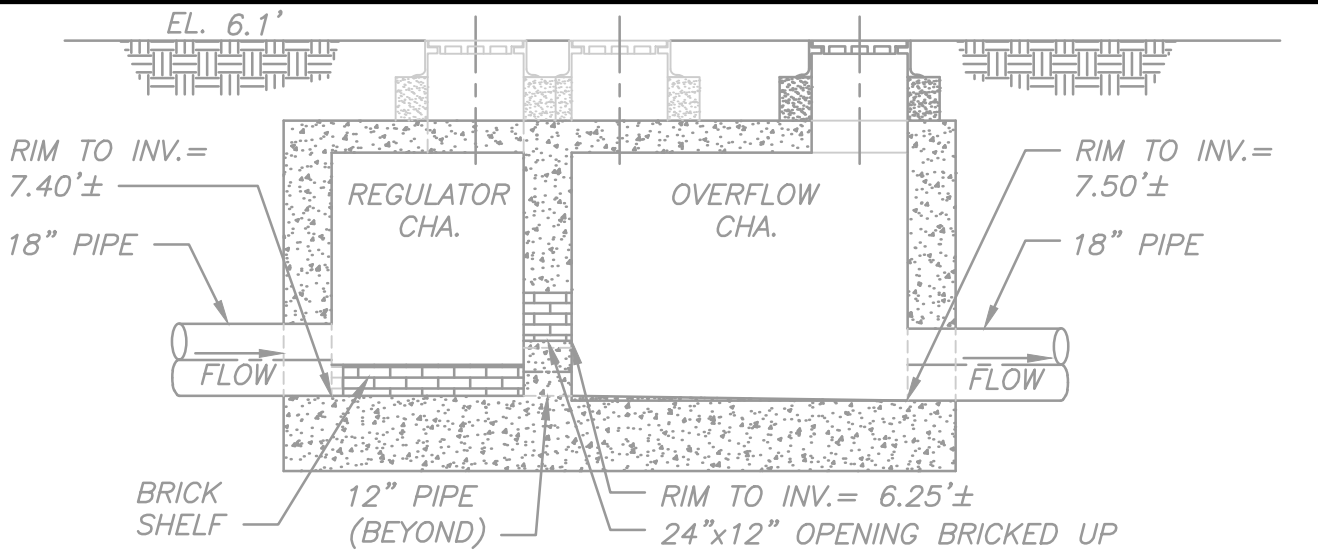
Tide Gate Status: Overflow bricked up

Notes: Only the inlet chamber was scanned by Redzone in 2023. Other chamber dimensions were taken from record drawing -6639A -ROD FR BLV. The tide gate has fallen off and is present in the overflow chamber. The overflow outlet is bricked up. The float is present but not functional, see Figure 2.

Location Sketch:







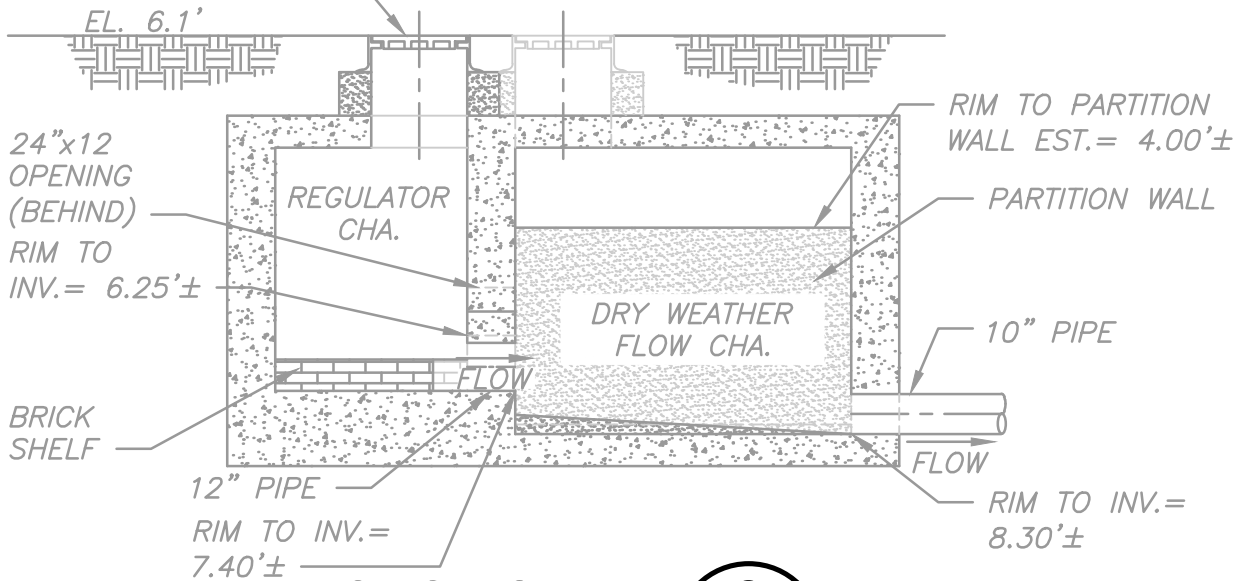
SECTION

1/4" = 1'-0"

1

SH.1

24" DIA. MH FRAME
AND COVER (TYP.)



SECTION

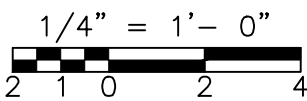
1/4" = 1'-0"

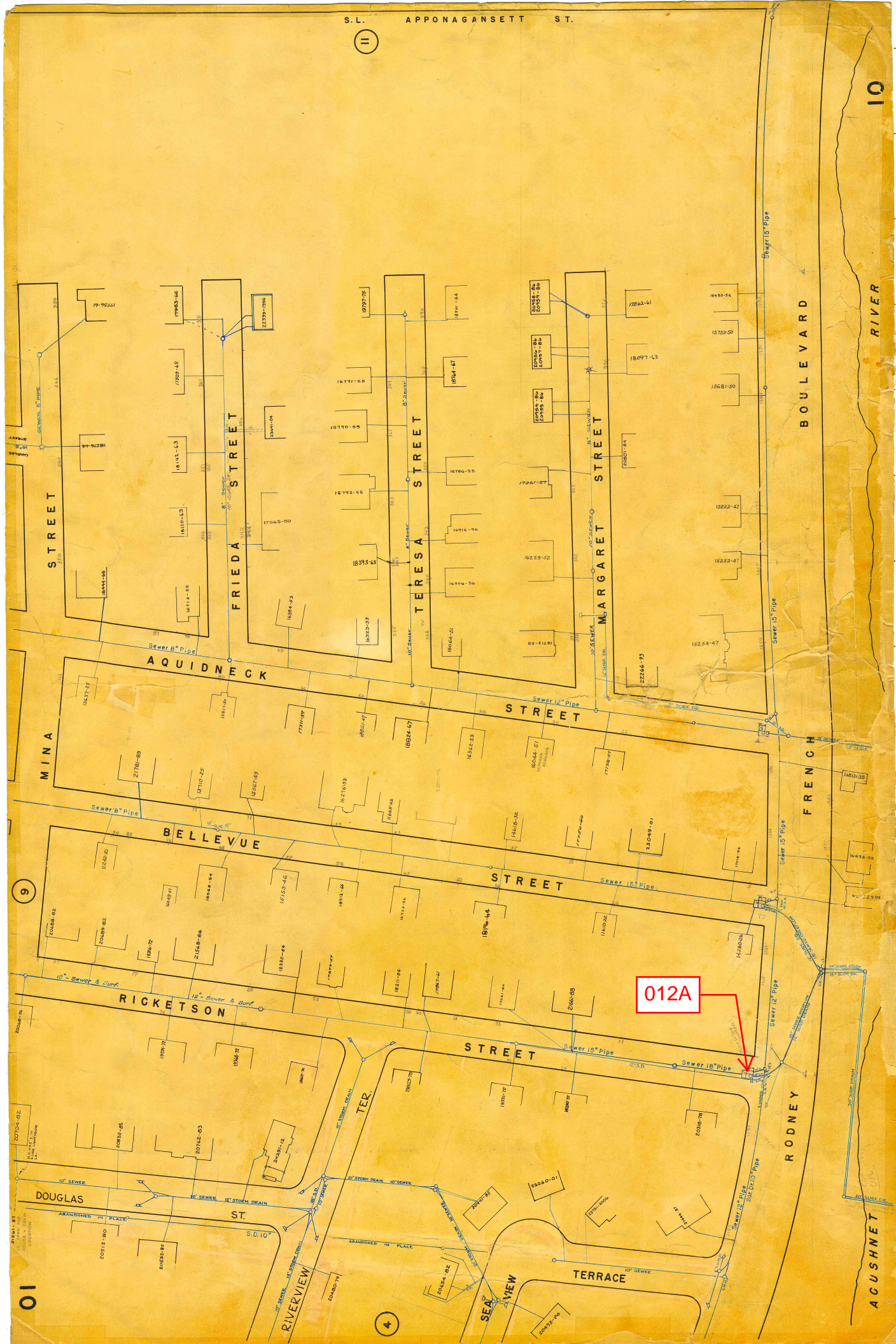
2

SH.1

NOTES:

1. ELEVATIONS SHOWN ARE IN NEW BEDFORD CITY DATUM.
2. ONLY REGULATOR CHAMBER SCANNED IN 2023.
OTHER DIMENSIONS ESTIMATED FROM RECORD
DRAWING SEE 6639A - ROD FR BLVD.





REGULATOR FIELD PHOTOS

Figure 1



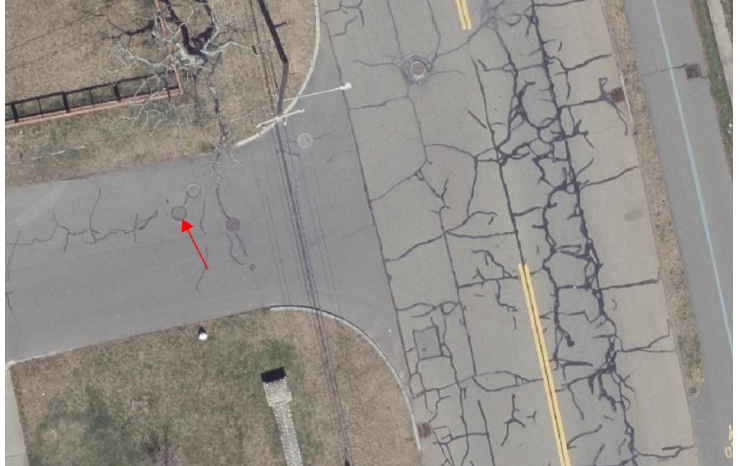
Figure 2



Figure 3



Figure 4



Descriptions:

Figure 1: Inside of R-012A. Inlet and bricked up overflow visible.

Figure 2: Inside of R-012A Dry Weather Flow Chamber. Float mechanism visible.

Figure 3: Location of manhole facing east at the east end of Ricketson Street.

Figure 4: Aerial location with arrow pointing to corresponding manhole.