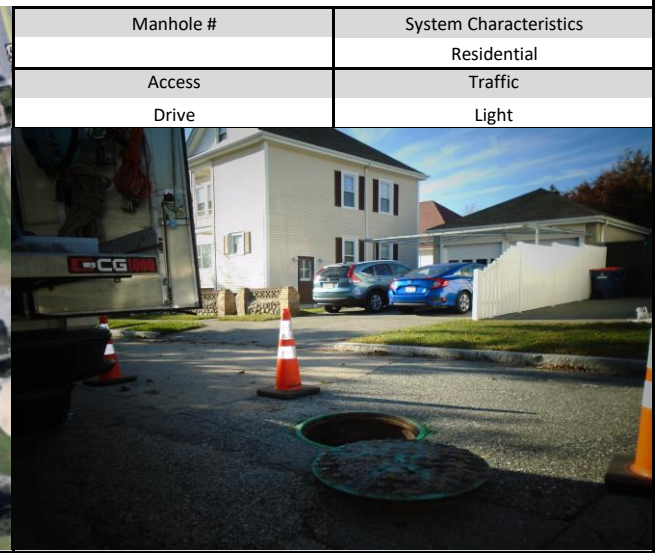


New Bedford, Ma		Site I.D.
Flow Monitoring Site Installation Report		010A

Site Address / Location:	373 Bellview St	Monitor Series	ECHO	Location Type	Temporary
Site Access:	Drive up	Pipe Size (H x W)	10 X 10	Pipe Shape	Circular



ADS Project Name:	New Bedford, Ma
ADS Project Number:	32673.52

Installation Information	
Installation Date:	Wednesday, October 14, 2020
Monitoring Location (Sensors):	Manhole
Sensors / Devices:	ECHO Depth
Installation Type:	Level Only
Monitor Location:	Manhole
Pressure Sensor Range (psi)	
Installation Confirmation:	
Confirmation Time:	3:42:00 PM
Pipe Size (HxW)	10 X 10
Depth of Flow (Wet DOF) (in)	4.25
Range (Air DOF) (in)	
Downlooker Physical Offset (in)	18.37
Measurement Confidence (in)	
Peak Velocity (fps)	
Velocity Sensor Offset (in)	
Silt (in)	0
Silt Type	
Hydraulic Comments:	
Manhole / Pipe Information:	
Manhole Depth (Approx. FT):	88.88
Manhole Configuration	Regulator
Manhole Material:	Block
Manhole Condition:	Good
Manhole Opening Diameter (in)	
Manhole Diameter (Approx.):	
Manhole Cover	Concealed
Manhole Frame	Normal
Active Drop Connections	
Air Quality:	Good
Pipe Material	Vitrified Clay Pipe
Pipe Condition:	Good
Communication Information:	
Communication Type	Wireless
Antenna Location	Drilled Pavement / Concrete
Additional Site Info. / Comments:	
Coordinates: N 41.601889 / W -70.912571 Meter SN# 30172 IP# 10.4.3.74	