

CSO SPEC SHEET

Structure #: REG 009 B

Date: 08/ 24 / 2012

Insp. By: AH and AK

Location: East of the intersection of Rodney French Blvd. West and Aquidneck St.

Structure Type: Cast Iron

Regulator Type: _____

Structure DIM's: _____

Weir Dim's: _____

Size of Sewer Pipe: _____

Rim to Riser: 5.6'

Size of Storm Drain Pipe: _____

Rim to Storm Drain Invert: _____

Sewer Direction: East to West

Rim to Top of Sewer (Normal Flow): 8.2'

Free Board: 2.6'

Over All Rating: (Circle One)

Poor

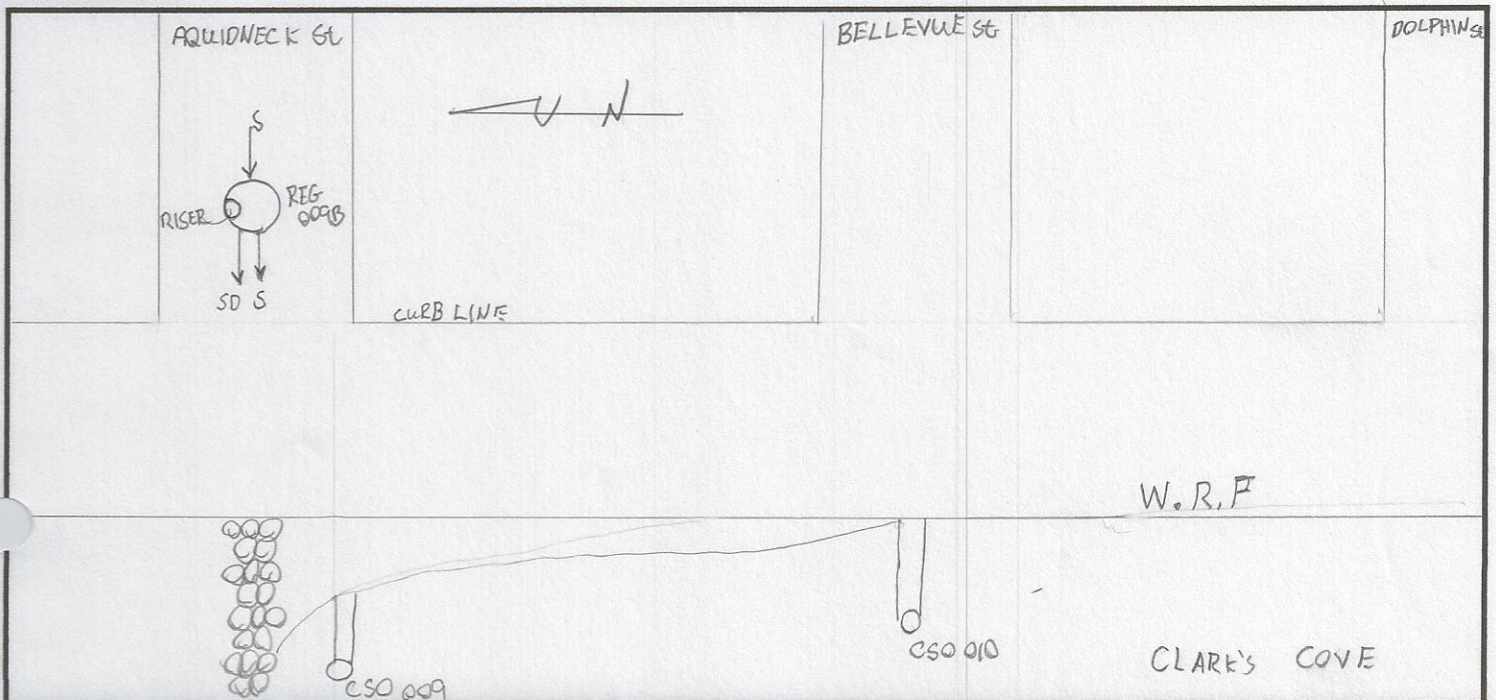
Fair

Good

Excellent

Comments: No Repairs needed. This regulator is connected to 009 A, which has a weir wall to be used to determine if 009 B overflows.

Field Sketch:



CSO FIELD PHOTOS

Structure#: REG 009 B

Location: East of the intersection of Rodney French Blvd West and Aquidneck St.

Figure 1.

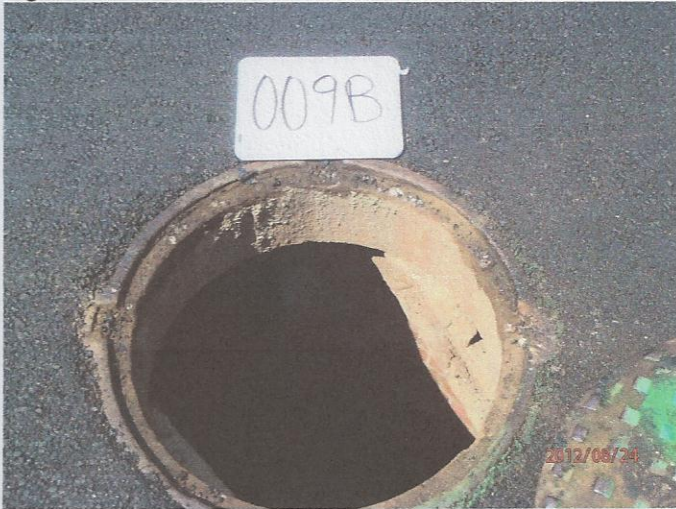


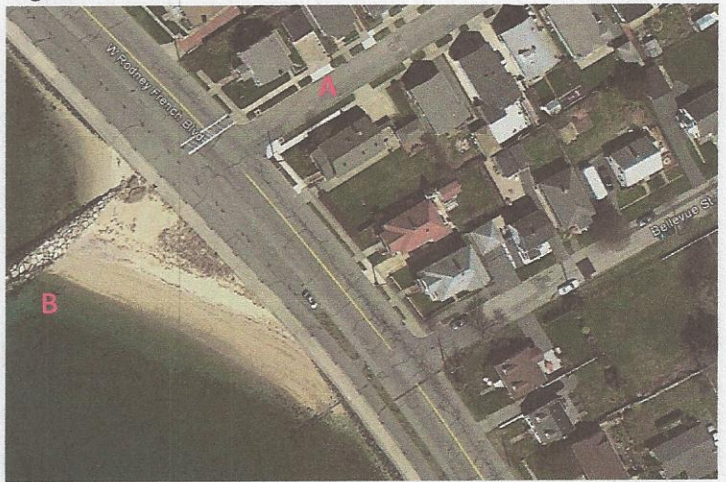
Figure 2.



Figure 3.



Figure 4.



Descriptions

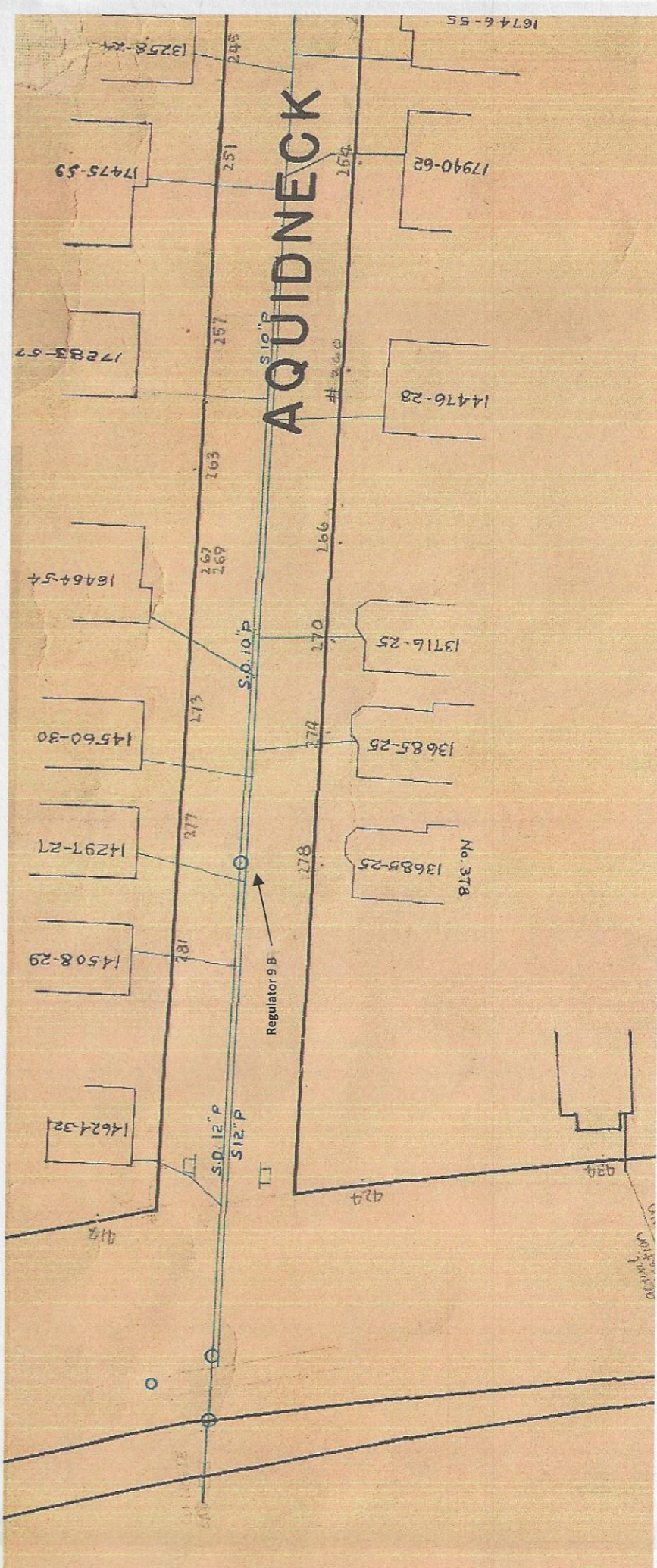
Figure 1: View of Regulator 009 B Facing North.

Figure 2: Inside view of manhole REG 009 B. A-Overflow pipe; B-Sewer.

Figure 3: Street view of Regulator 009B facing Clark's Cove.

Figure 4: Google Earth Image of REG 009 B. A- REG 009 B; B- CSO 009 pipe into Clark's Cove.

AQUIDNECK



CSO/Regulator Repair Log

Structure #: Reg 00AB

[illegible]