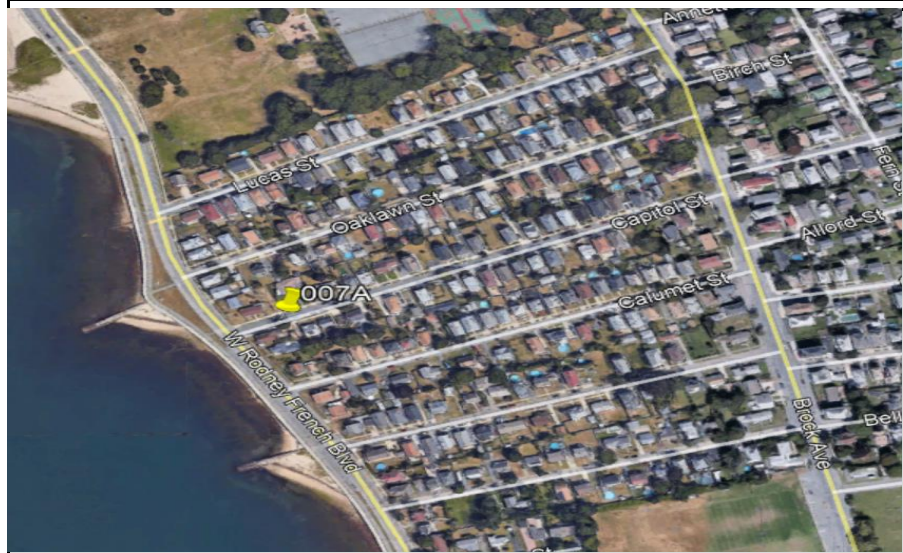


New Bedford, Ma			Site I.D.	
Flow Monitoring Site Installation Report			007A	

Site Address / Location:	111Capitol St	Monitor Series	Location Type
Site Access:	Drive up	ECHO	Temporary
		Pipe Size (H x W)	Pipe Shape
		18 X 18	Circular



Manhole #	System Characteristics
	Residential
Access	Traffic
Drive	Light



ADS Project Name:	New Bedford, Ma
ADS Project Number:	32673.52

Installation Information	
Installation Date:	Installation Type:
Wednesday, October 14, 2020	Level Only
Monitoring Location (Sensors):	Monitor Location:
	Manhole
Sensors / Devices:	Pressure Sensor Range (psi)
ECHO Depth	
Installation Confirmation:	
Confirmation Time:	Pipe Size (HxW)
12:35:00 PM	18 X 18
Depth of Flow (Wet DOF) (in)	Range (Air DOF) (in)
0.5	
Downlooker Physical Offset (in)	Measurement Confidence (in)
17.25	
Peak Velocity (fps)	Velocity Sensor Offset (in)
Silt (in)	Silt Type
0	
Hydraulic Comments:	
Manhole / Pipe Information:	
Manhole Depth (Approx. FT):	Manhole Configuration
93.25	CSO Flow Divider
Manhole Material:	Manhole Condition:
Brick	Good
Manhole Opening Diameter (in)	Manhole Diameter (Approx.):
Manhole Cover	Manhole Frame
Concealed	Normal
Active Drop Connections	Air Quality:
	Good
Pipe Material	Pipe Condition:
Vitrified Clay Pipe	Good
Communication Information:	
Communication Type	Antenna Location
Wireless	Drilled Pavement / Concrete
Additional Site Info. / Comments:	
Coordinates: N 41.603522 / W -70.913865 Meter SN# 30061 IP# 10.4.2.143	