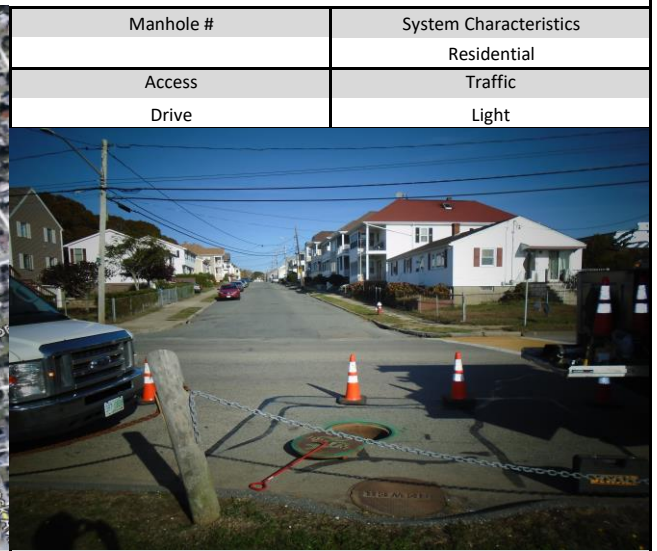


New Bedford, Ma		Site I.D.
Flow Monitoring Site Installation Report		006_Outfall

Site Address / Location:	Lucas St at West Rodney French	Monitor Series	ECHO	Location Type	Temporary
Site Access:	Drive up side of road	Pipe Size (H x W)	12 X 12	Pipe Shape	Circular



ADS Project Name:	New Bedford, Ma
ADS Project Number:	32673.52

Installation Information	
Installation Date:	Monday, October 19, 2020
Installation Type:	Level Only
Monitoring Location (Sensors):	Manhole
Sensors / Devices:	ECHO Depth
Pressure Sensor Range (psi)	
Installation Confirmation:	
Confirmation Time:	Pipe Size (HxW)
	12 X 12
Depth of Flow (Wet DOF) (in)	Range (Air DOF) (in)
Downlooker Physical Offset (in)	Measurement Confidence (in)
32.12	
Peak Velocity (fps)	Velocity Sensor Offset (in)
Silt (in)	Silt Type
0	
Hydraulic Comments:	
Manhole / Pipe Information:	
Manhole Depth (Approx. FT):	Manhole Configuration
95.63	Regulator
Manhole Material:	Manhole Condition:
Lined	Good
Manhole Opening Diameter (in)	Manhole Diameter (Approx.):
Manhole Cover	Manhole Frame
Concealed	Normal
Active Drop Connections	Air Quality:
	Good
Pipe Material	Pipe Condition:
Vitrified Clay Pipe	Good
Communication Information:	
Communication Type	Antenna Location
Wireless	Drilled Pavement / Concrete
Additional Site Info. / Comments:	
Coordinates: N 41.604482 / W -70.914969 Meter SN# 1087 IP# 166.219.171.221	