

New Bedford Regulator Specification Sheet

Regulator #: R-006C

Location: Capitol St. near W. Rodney French Blvd.

Date: 6/25/25

Structure Measurements

Structure Type: Single manhole

Rim Elevation (ft City Datum): 10.3

Regulator Type: Fixed Weir

Overflow Height (ft or in): 30"

Rim to Top of Weir (ft): 6.5

Weir Dims (ft or in): Length: 33", Width: 4", Height: 30"

Influent pipe ø (in): 10" expands to 15"

Rim to Influent Invert (ft): 9

Dry Weather Connection ø (in): 8

Rim to Dry Weather Invert (ft): 9

Overflow pipe ø (in): 15

Rim to Overflow Invert (ft): 9

Sensor Measurements

Block Present: Yes

Level Sensor Status: Not Metered

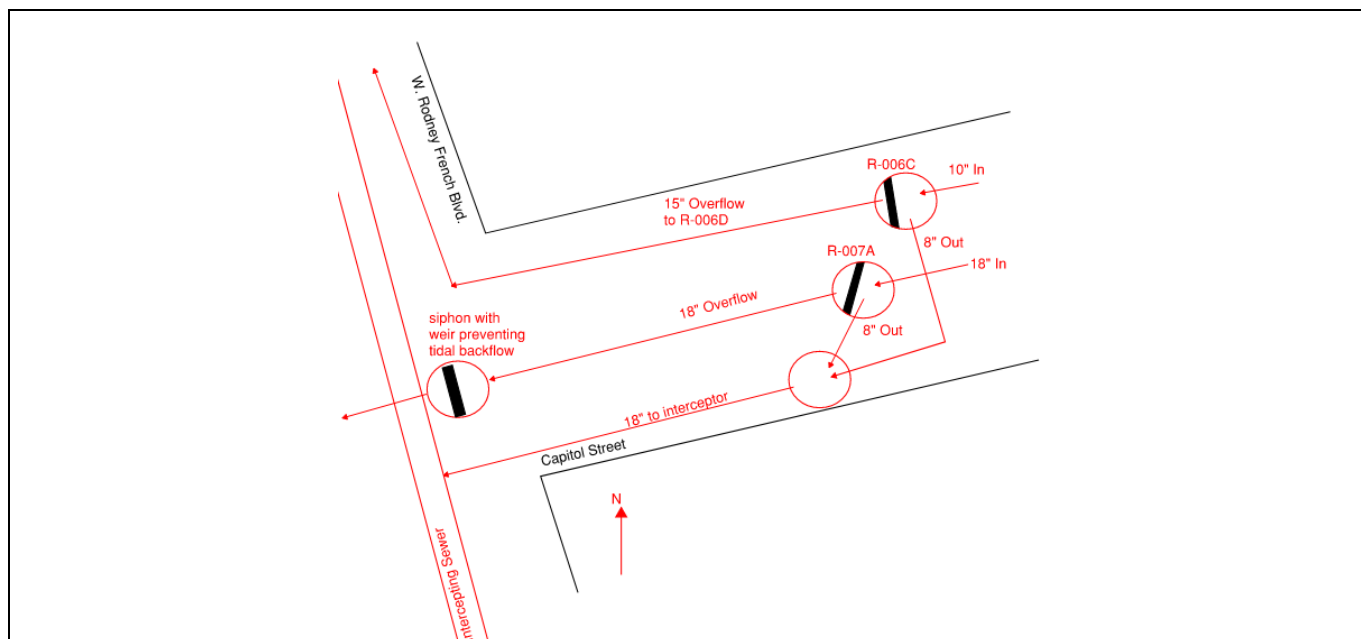
Sensor Installation Date: n/a

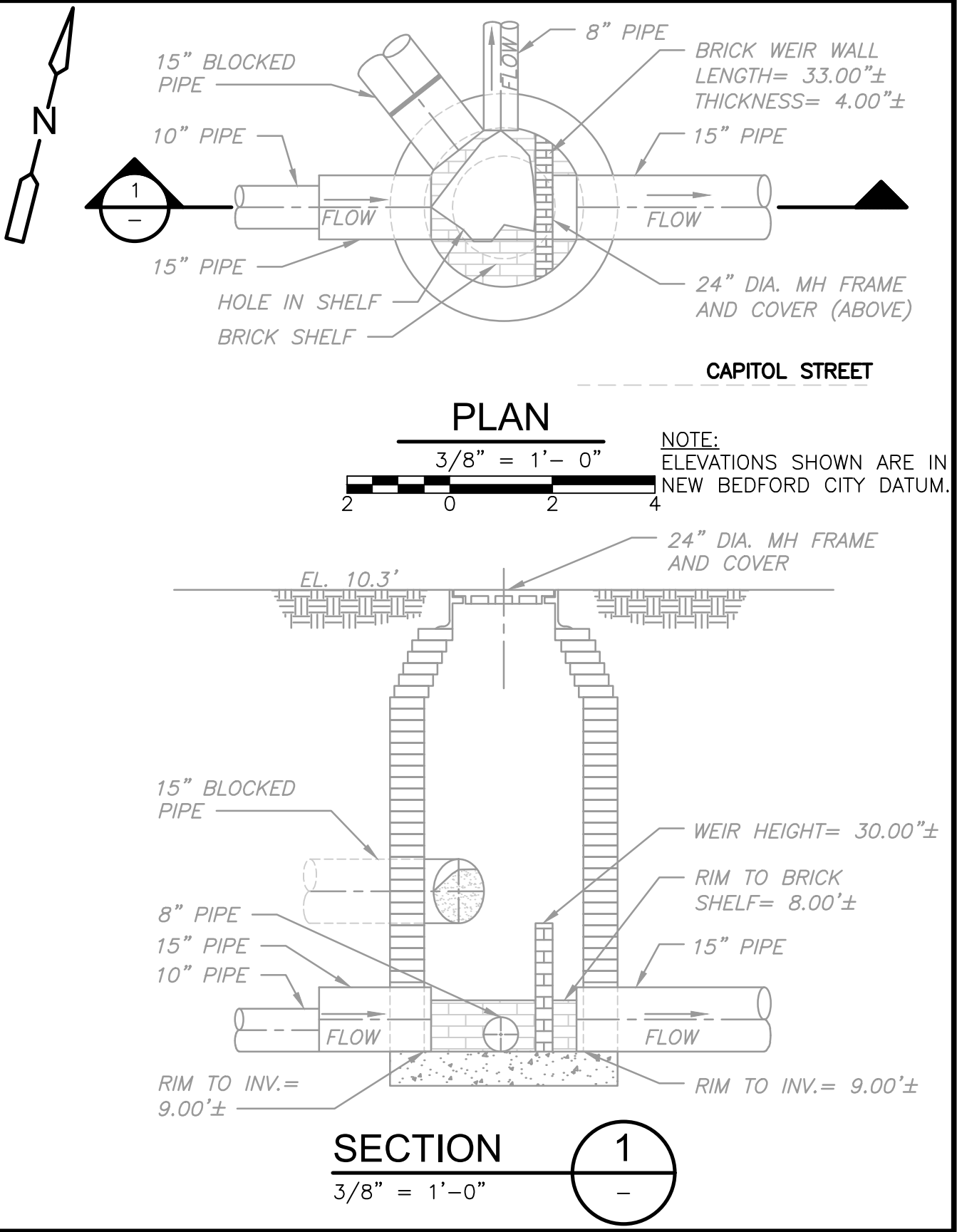
Intra-System Status: Yes

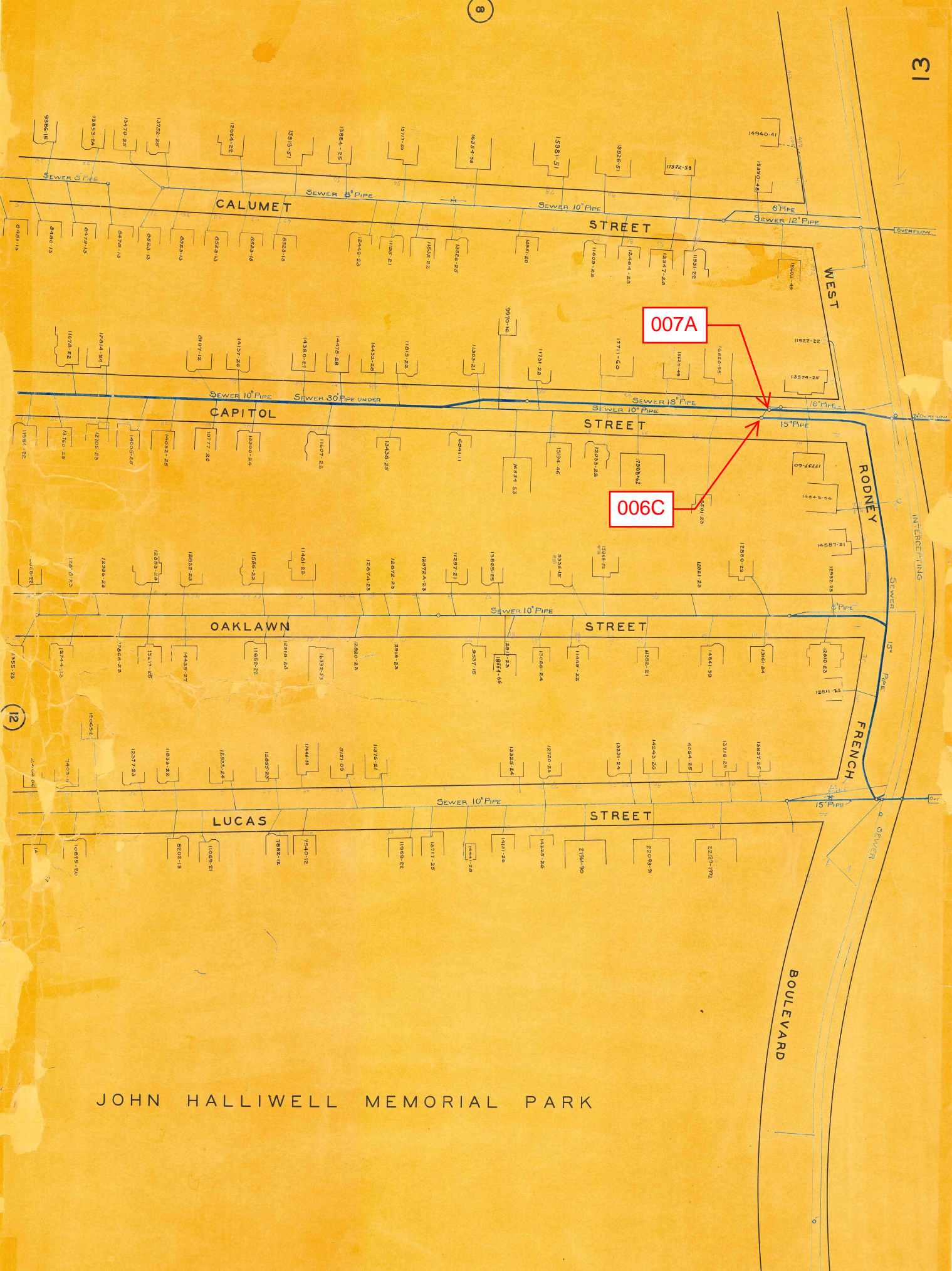
Tide Gate Status: None

Notes: Old fieldwork shows lots of plant growth and root, but it appears to have been cleaned during the 2023 Redzone scan.

Location Sketch:







JOHN HALLIWELL MEMORIAL PARK

REGULATOR FIELD PHOTOS

Figure 1



Figure 2



Figure 3



Figure 4



Descriptions:

Figure 1: Inside of R-006C. Inflow, outflow, weir visible.

Figure 2: Inside of R-006C. Inlet and Dry weather outlet.

Figure 3: Location of manhole facing west along Capitol Street. Manhole marked in red.

Figure 4: Aerial location with arrow pointing to corresponding manhole.