

CSO SPEC SHEET

Structure #: REG 006 A

Date: 08/22/2012

Insp. By: AH and AK

Location: At the intersection of Lucas St. and Rodney French Blvd.

Structure Type: Cast Iron

Regulator Type: Weir Wall/ Block Regulator

Structure DIM's: _____

Weir Dim's: _____

Size of Sewer Pipe: 10"

Rim to Top of Weir: 6.2'

Size of Storm Drain Pipe: 8"

Rim to Storm Drain Invert: 6.5'

Sewer Direction: East to South

Rim to Top of Sewer (Normal Flow): 6.6'

Free Board: 0.4'

Over All Rating: (Circle One)

Poor

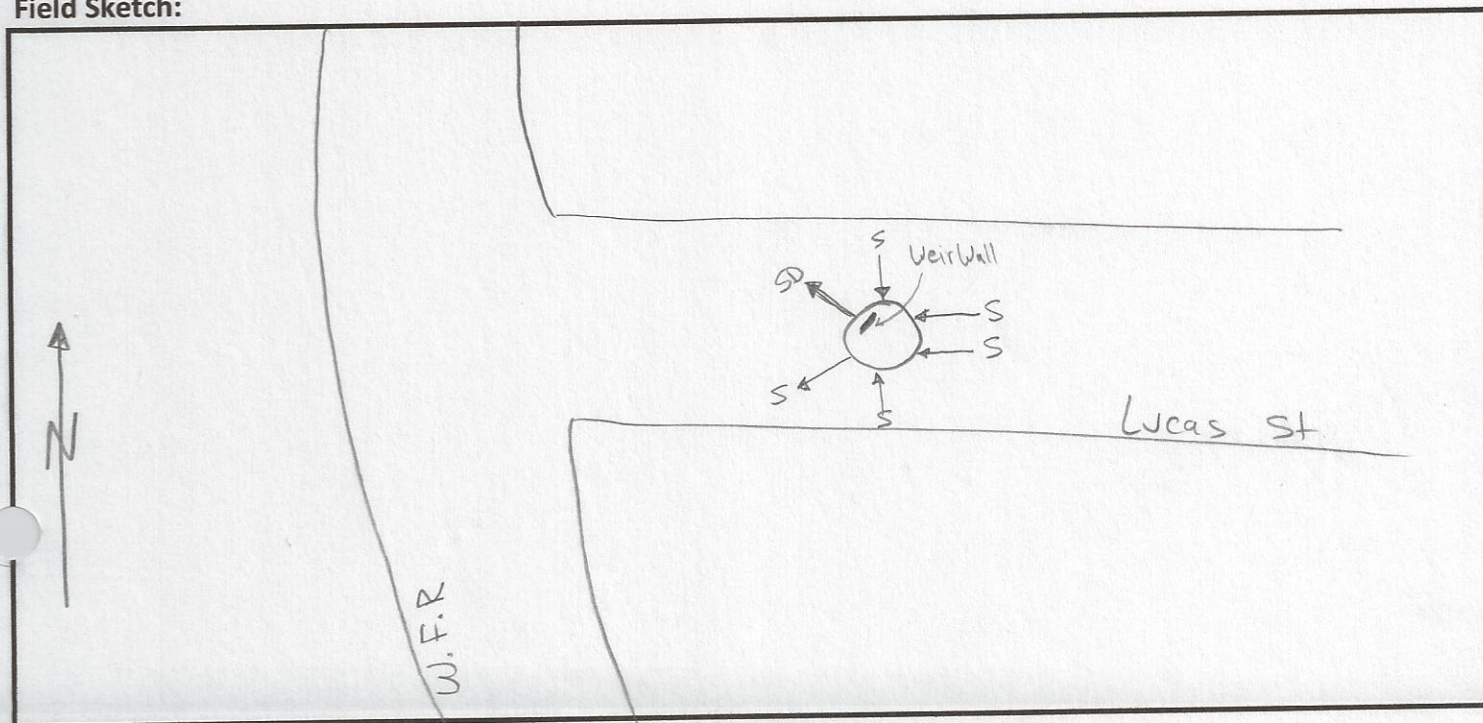
Fair

Good

Excellent

Comments: Weir wall is to small. Provides only 0.4' of freeboard.

Field Sketch:



CSO FIELD PHOTOS

Structure#: REG 006 A

Location: At the Intersection of Lucas St and French Rodney Blvd.

Figure 1.



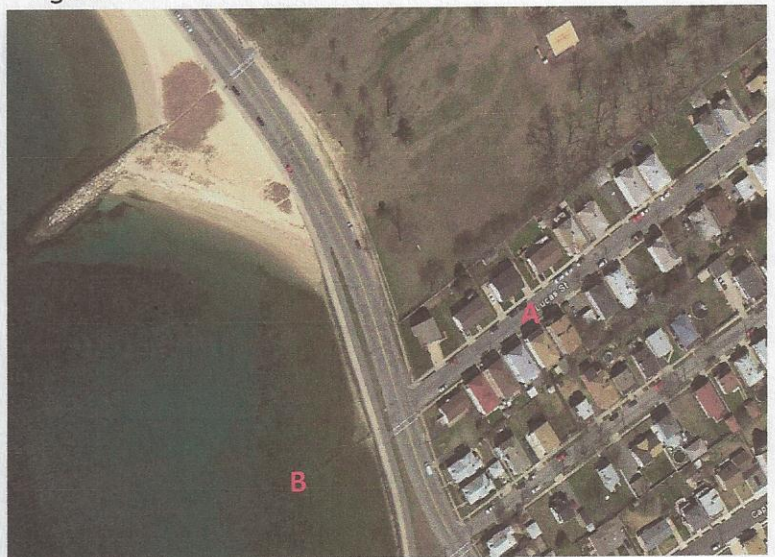
Figure 2.



Figure 3.



Figure 4.



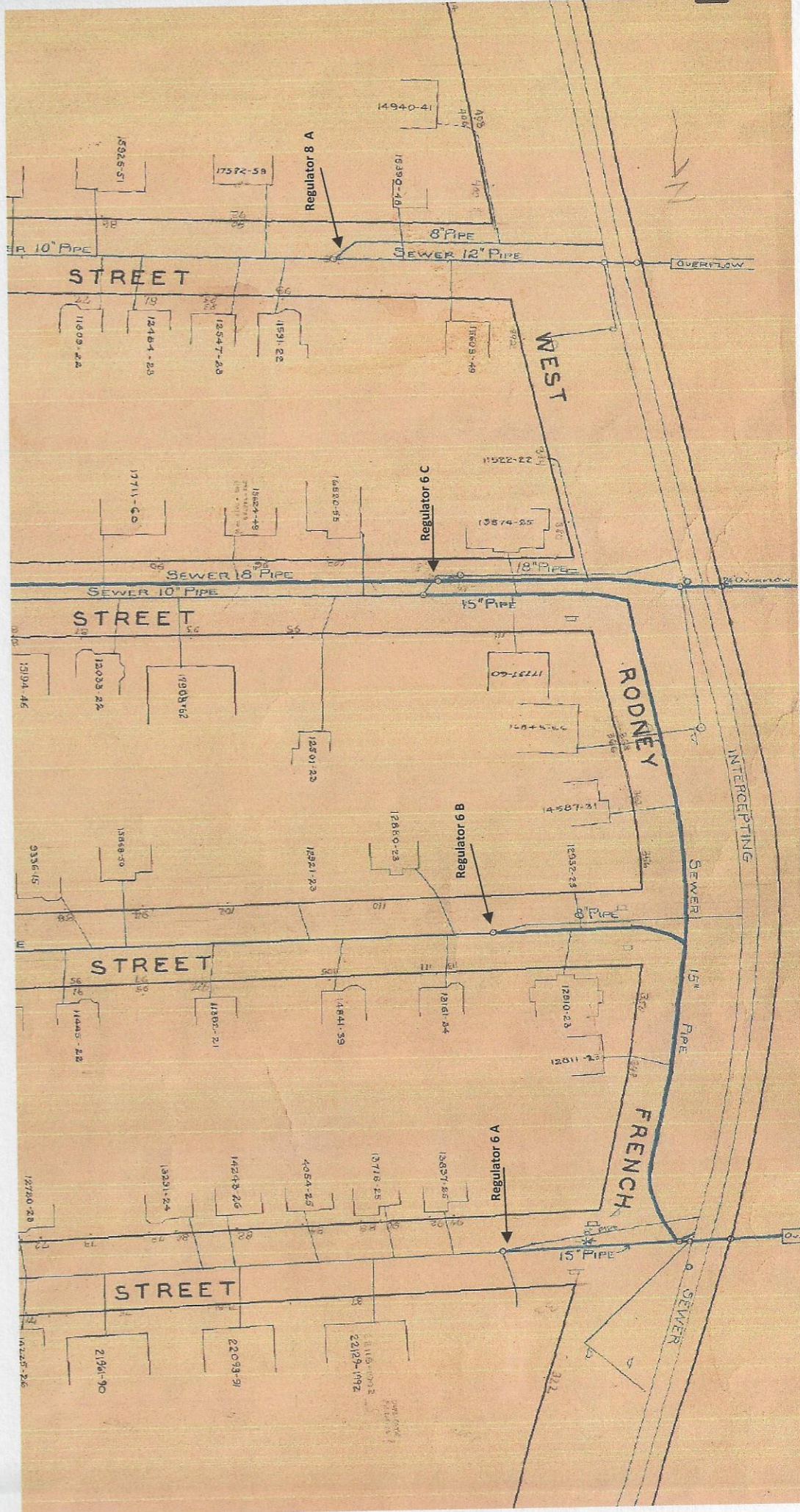
Descriptions

Figure 1: View of Regulator 006 A. Facing North.

Figure 2: Inside view of manhole. A-Storm Drain; B- Weir Wall; C- Sewer.

Figure 3: Street view of Regulator 006 A. Facing East.

Figure 4: Google Earth image of Regulator 006 A. A- REG 006A; B- CSO 006 outfall pipe.



CSO/Regulator Repair Log

Structure #: Reg 006A

[illegible]