

New Bedford Regulator Specification Sheet

Regulator #: R-005A

Location: Dudley St. at W. Rodney French Blvd.

Date: 6/25/25

Structure Measurements

Structure Type: Single manhole

Rim Elevation (ft City Datum): 6.2

Regulator Type: Fixed Weir

Overflow Height (ft or in): 4.5'

Rim to Top of Weir (ft): 2.7

Weir Dims (ft or in): Length: 3.1', Width: 8", Height: 3.70-4.50'

Influent pipe ø (in): 18

Rim to Influent Invert (ft): 7

Dry Weather Connection ø (in): 10

Rim to Dry Weather Invert (ft): 7.2

Overflow pipe ø (in): 18

Rim to Overflow Invert (ft): 7.2

Sensor Measurements

Block Present: Yes

Level Sensor Status: Metered

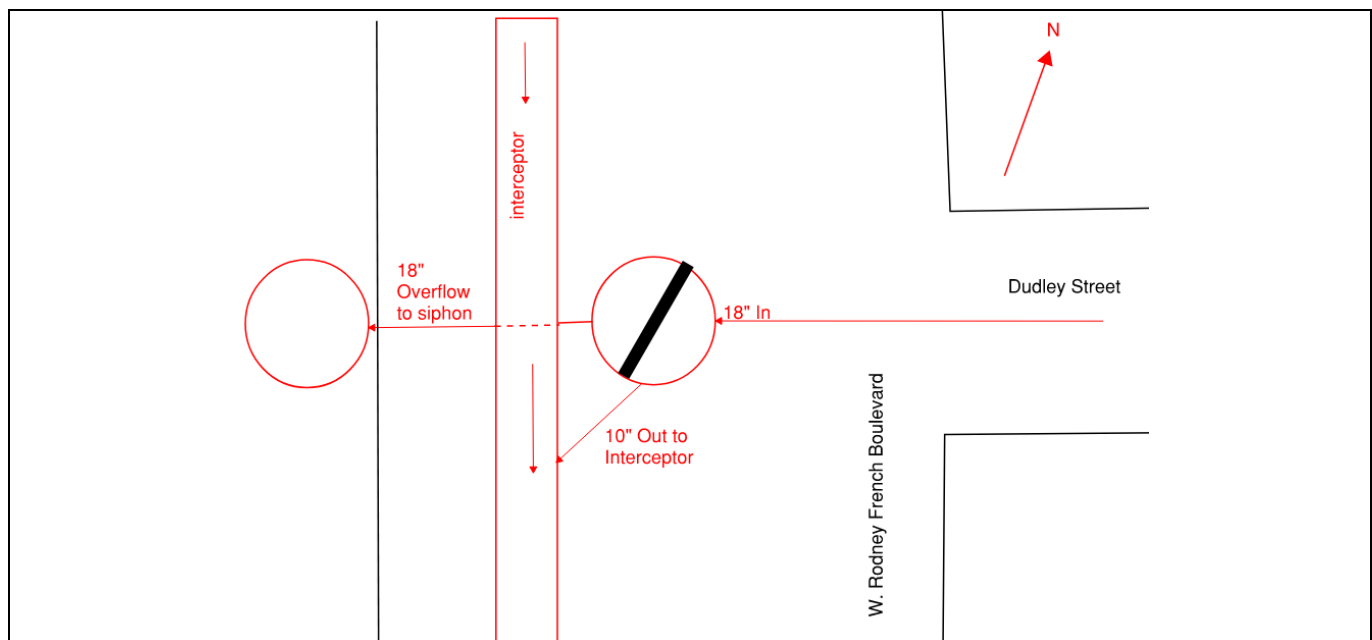
Sensor Installation Date: 10/14/2020

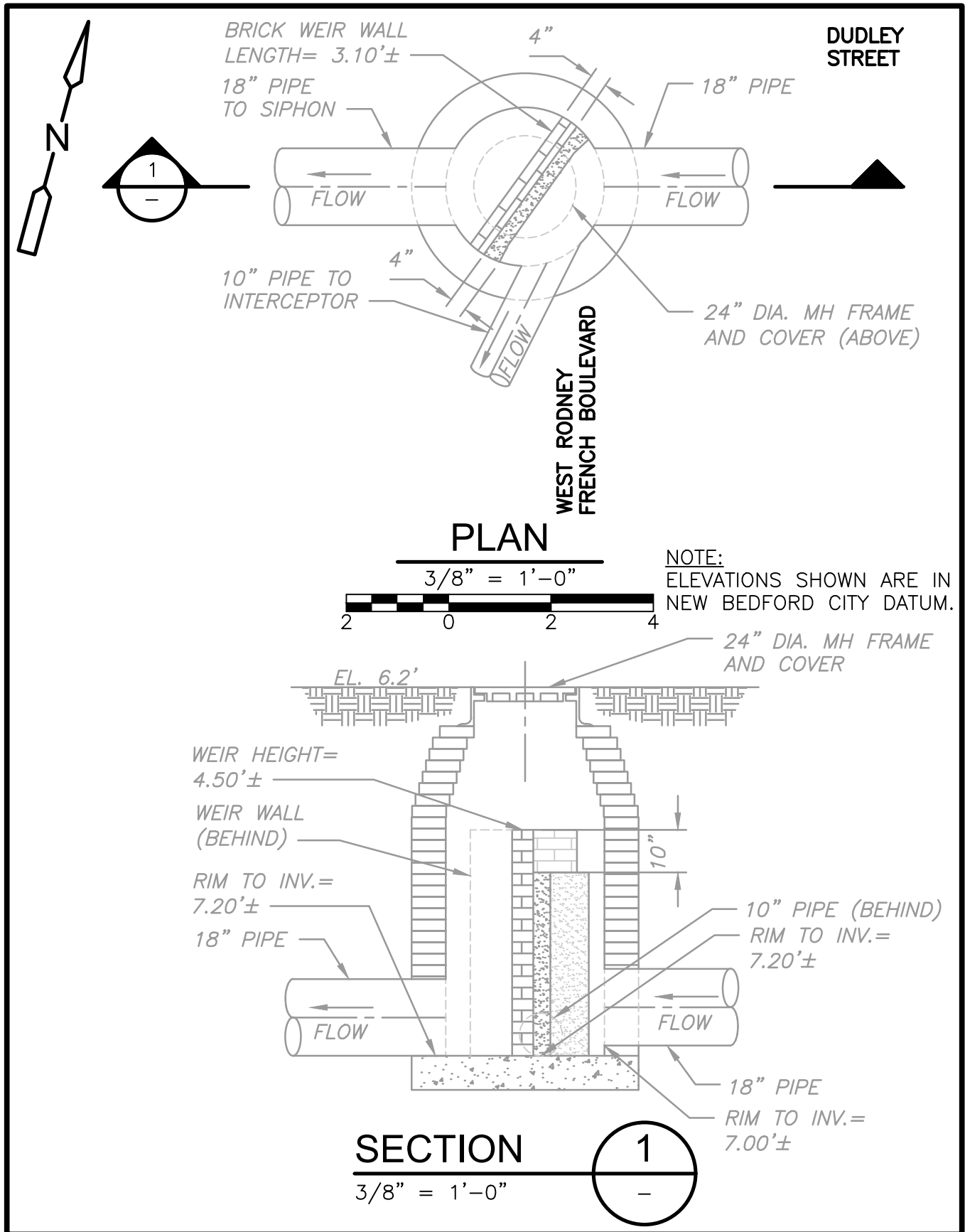
Intra-System Status: No

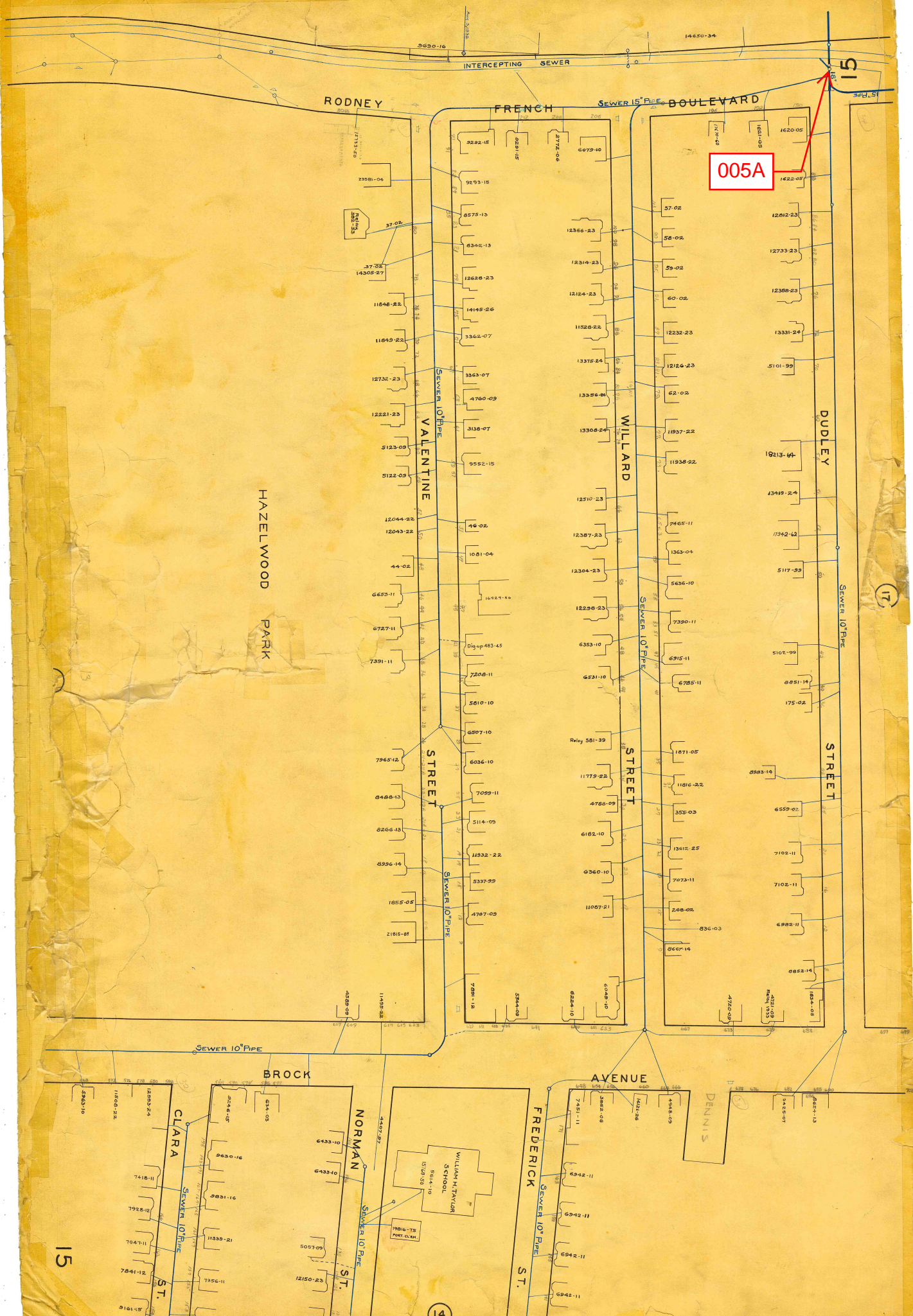
Tide Gate Status: None

Notes: Weir above high tide levels

Location Sketch:







005A

51

17

15

14

REGULATOR FIELD PHOTOS

Figure 1



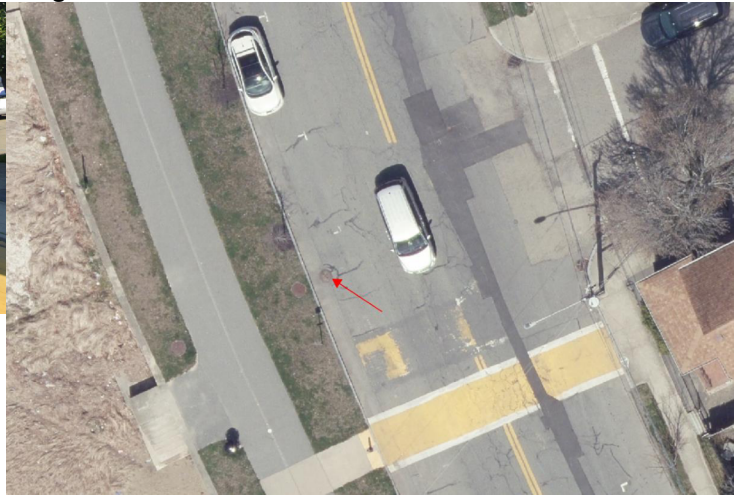
Figure 2



Figure 3



Figure 4



Descriptions:

Figure 1: Inside of R-005A. Weir and block visible.

Figure 2: Google Earth snapshot facing west towards water. Manhole marked in red.

Figure 3: Google Earth snapshot facing north down W. Rodney French Blvd. Manhole marked in red.

Figure 4: Aerial location with arrow pointing to corresponding manhole.