

CSO SPEC SHEET

Structure #: REG 005 A

Date: 08/20/2012

Insp. By: AH and AK

Location: at the intersection of Dudley St. and Rodney French Blvd.

Structure Type: Cast Iron

Regulator Type: Weir Wall/ Block Regulator

Structure DIM's: _____

Weir Dim's: 3.0' x 2.7'

Size of Sewer Pipe: 10"

Rim to Top of Weir: 2.7'

Size of Storm Drain Pipe: 15"

Rim to Storm Drain Invert: 5.6'

Sewer Direction: East to South

Rim to Top of Sewer (Normal Flow): 6.4'

Free Board: 3.7'

Over All Rating: (Circle One)

Poor

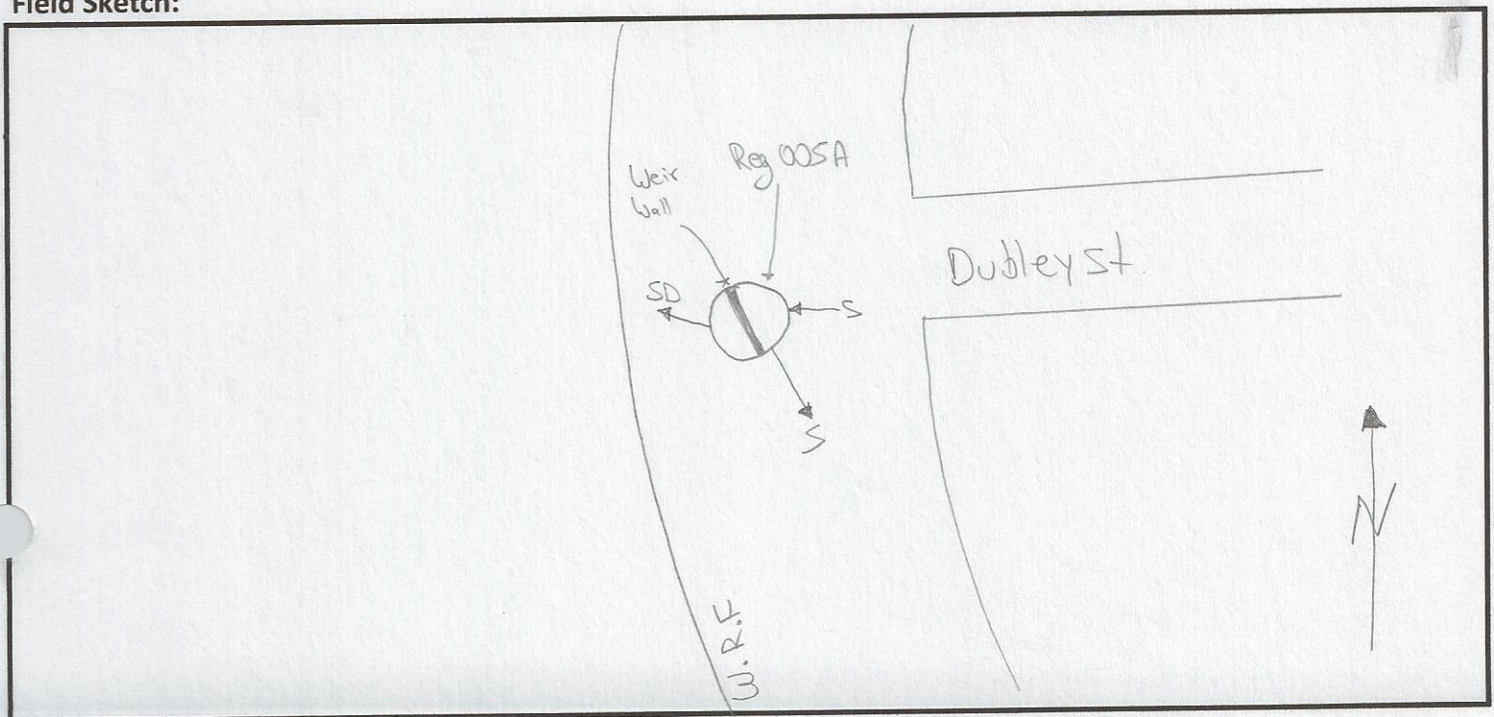
Fair

Good

Excellent

Comments: Looks like there is infiltration to the sewer side.

Field Sketch:



CSO FIELD PHOTOS

Structure#: REG 005 A

Location: At the Intersection of Dudley St and French Rodney Blvd.

Figure 1.



Figure 2.

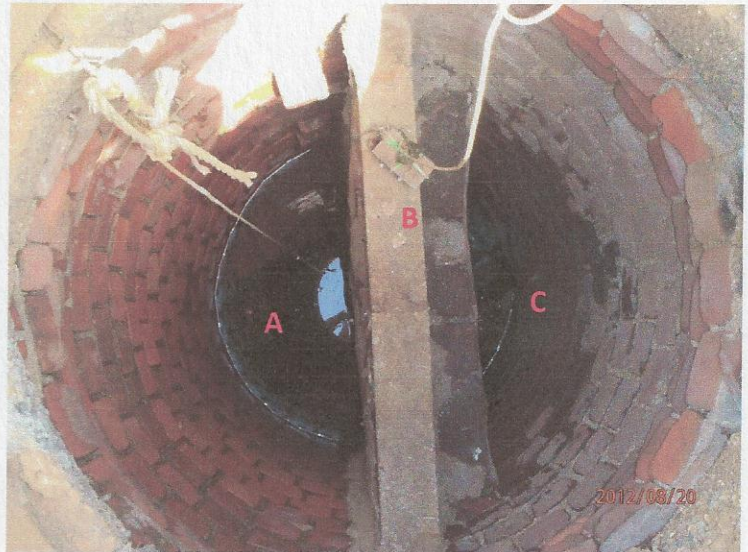


Figure 3.



Figure 4.



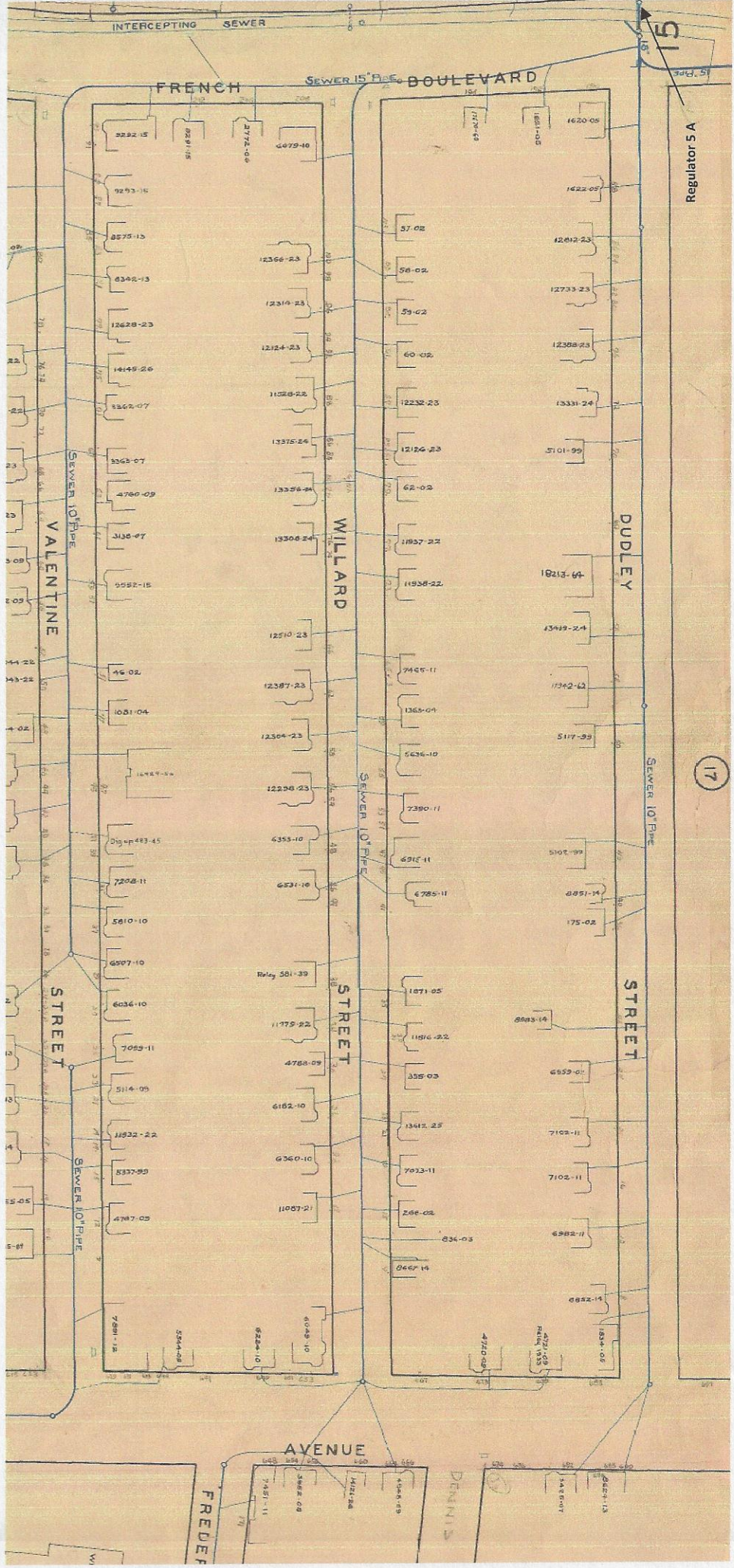
Descriptions

Figure 1: Street view of Regulator 005 A. Facing East.

Figure 2: Inside view of manhole. A-Storm Drain; B- Weir Wall; C- Sewer.

Figure 3: Street view of Regulator 005 A. Facing Clark's Cove.

Figure 4: Google Earth image of Regulator 005 A. A- REG 005A; B- CSO 005 outfall pipe.



Regulator 5

17

INTERCEPTING SEWER

FRENCH

SEWER 15" PIPE BOULEVARD

DUDLEY

STREET

WILLARD

STREET

SEWER 10" PIPE VALENTINE

SEWER 10" PIPE

STREET

SEWER 10" PIPE

AVENUE

FREDERICK

DENNIS

CSO/Regulator Repair Log

Structure #: Reg 005A

[illegible]