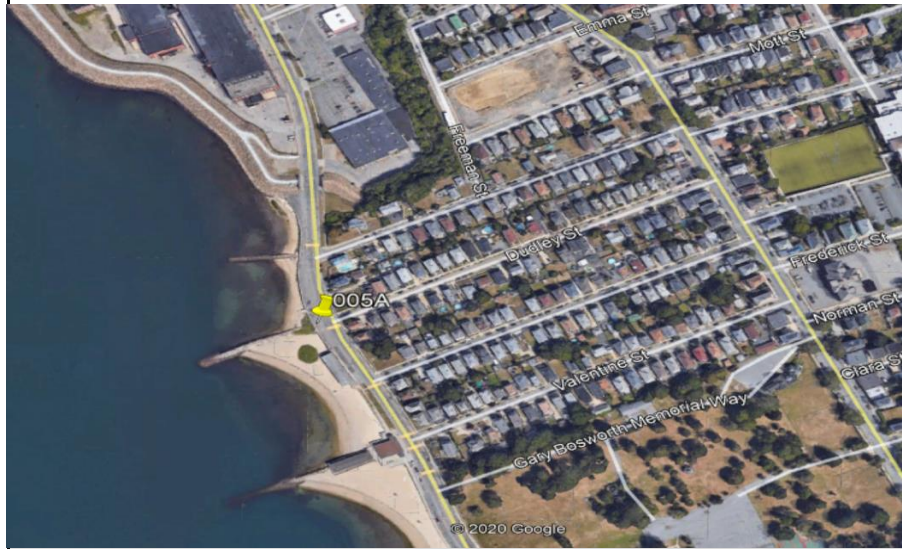


| | | | | |
|---|--|--|------------------|--|
| New Bedford, Ma | |  | Site I.D. | |
| Flow Monitoring Site Installation Report | | | 005A | |

| | | | |
|--------------------------|-------------------------------|-------------------|---------------|
| Site Address / Location: | Dudley St at W. Rodney French | Monitor Series | Location Type |
| Site Access: | Drive up | ECHO | Temporary |
| | | Pipe Size (H x W) | Pipe Shape |
| | | 18 X 18 | Circular |



| | |
|-----------|------------------------|
| Manhole # | System Characteristics |
| | Residential |
| Access | Traffic |
| Drive | Light |



| | |
|---------------------|-----------------|
| ADS Project Name: | New Bedford, Ma |
| ADS Project Number: | 32673.52 |

| Installation Information | |
|--|-----------------------------|
| Installation Date: | Installation Type: |
| Wednesday, October 14, 2020 | Level Only |
| Monitoring Location (Sensors): | Monitor Location: |
| | Manhole |
| Sensors / Devices: | Pressure Sensor Range (psi) |
| ECHO Depth | |
| Installation Confirmation: | |
| Confirmation Time: | Pipe Size (HxW) |
| 10:25:00 AM | 18 X 18 |
| Depth of Flow (Wet DOF) (in) | Range (Air DOF) (in) |
| 2.38 | |
| Downlooker Physical Offset (in) | Measurement Confidence (in) |
| 22.87 | 0.25" |
| Peak Velocity (fps) | Velocity Sensor Offset (in) |
| | |
| Silt (in) | Silt Type |
| 0 | |
| Hydraulic Comments: | |
| | |
| Manhole / Pipe Information: | |
| Manhole Depth (Approx. FT): | Manhole Configuration |
| 87.75 | Regulator |
| Manhole Material: | Manhole Condition: |
| Brick | Good |
| Manhole Opening Diameter (in) | Manhole Diameter (Approx.): |
| | |
| Manhole Cover | Manhole Frame |
| Concealed | Normal |
| Active Drop Connections | Air Quality: |
| | Good |
| Pipe Material | Pipe Condition: |
| Vitrified Clay Pipe | Good |
| Communication Information: | |
| Communication Type | Antenna Location |
| Wireless | Drilled Pavement / Concrete |
| Additional Site Info. / Comments: | |
| Coordinates: N 41.608639 / W -70.91722 Meter SN# 1523 IP# 166.219.174.93 | |