

New Bedford Regulator Specification Sheet

Regulator #: R-004I

Location: W. Rodney French Blvd. at David St.

Date: 6/25/25

Structure Measurements

Structure Type: Single manhole

Rim Elevation (ft City Datum): 8.0

Regulator Type: Fixed Weir

Overflow Height (ft or in): 5.2' to 5.4'

Rim to Top of Weir (ft): 3.4 to 3.6

Weir Dims (ft or in): Length: 3.5', Width: 9", Height: 5.2' to 5.4'

Influent pipe ø (in): 12, 12

Rim to Influent Invert (ft): 8.8

Dry Weather Connection ø (in): 10

Rim to Dry Weather Invert (ft): 8.8

Overflow pipe ø (in): 12

Rim to Overflow Invert (ft): 8.8

Sensor Measurements

Block Present: Yes

Level Sensor Status: Metered

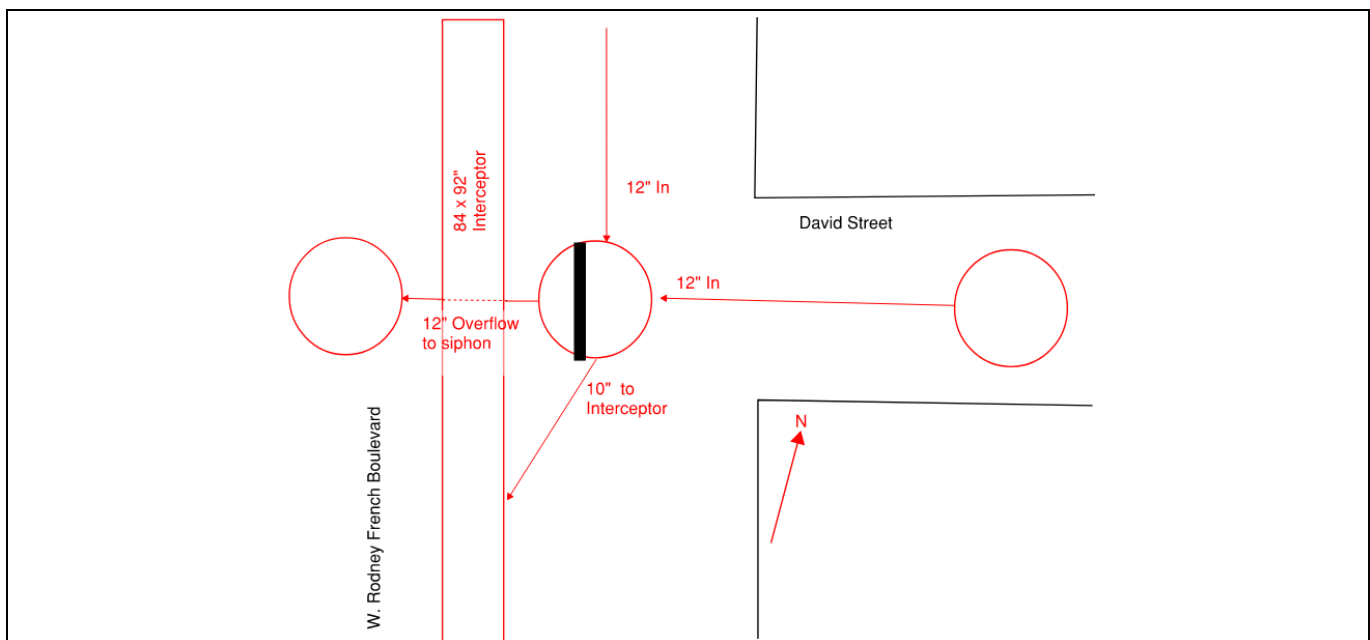
Sensor Installation Date: 10/15/2020

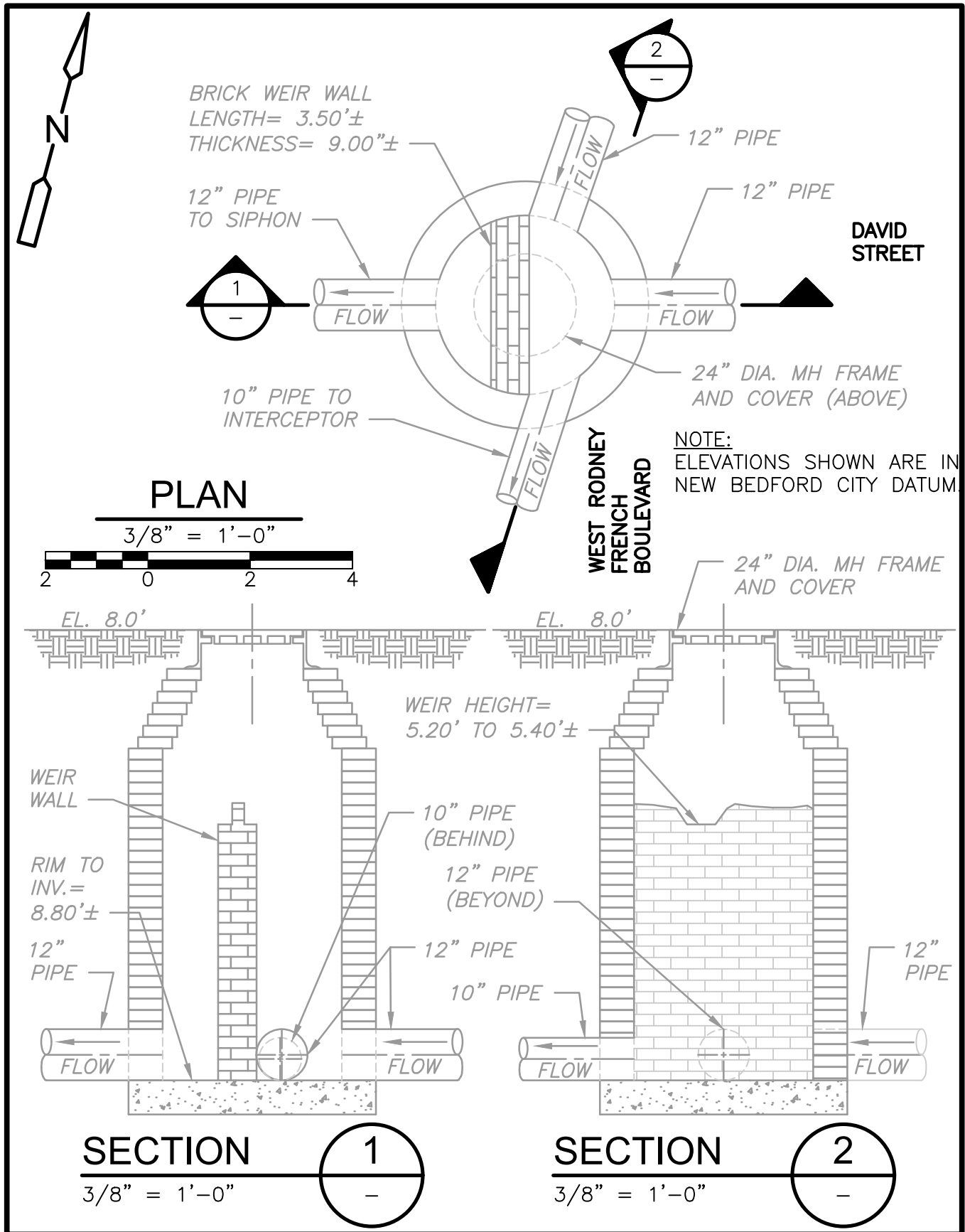
Intra-System Status: Yes

Tide Gate Status: Gate at outfall

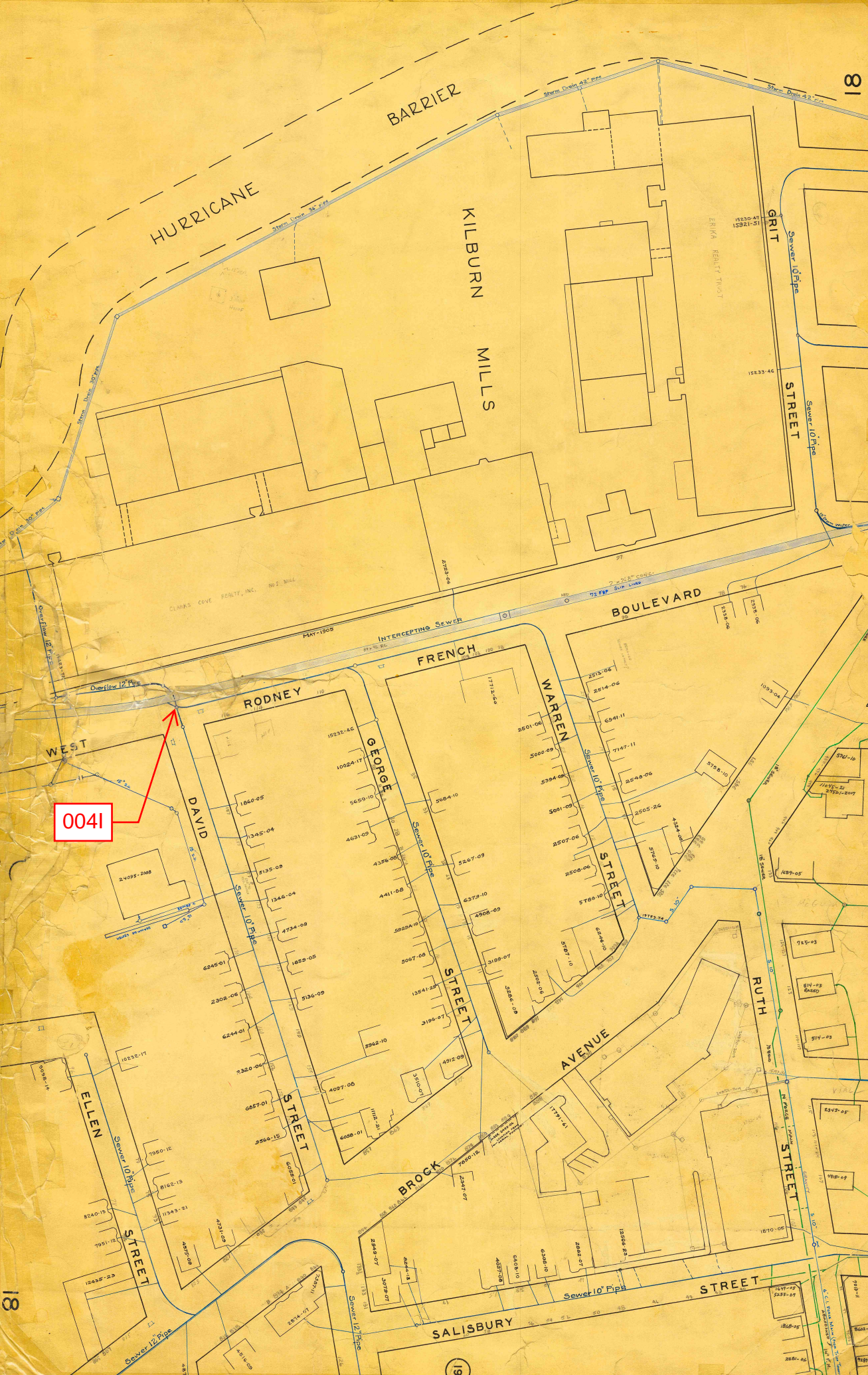
Notes:

Location Sketch:





004I



REGULATOR FIELD PHOTOS

Figure 1



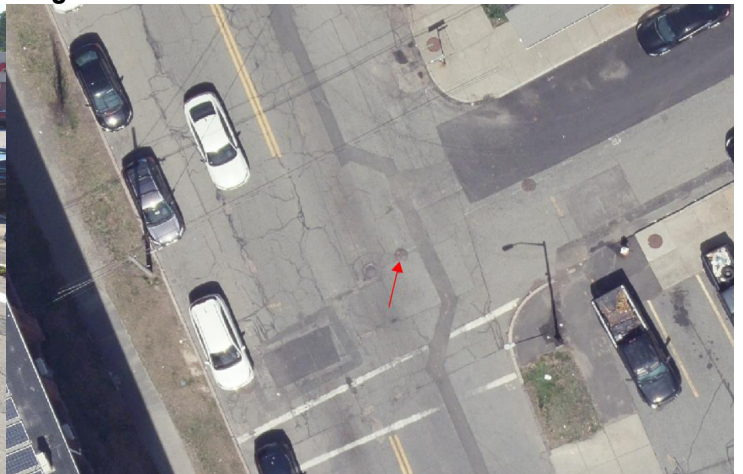
Figure 2



Figure 3



Figure 4



Descriptions:

Figure 1: Inside of R-004I. Weir and block visible.

Figure 2: Google Earth snapshot facing south toward Kilburn Mill. Manhole marked in red.

Figure 3: Google Earth snapshot facing east down David St. Manhole Marked in red.

Figure 4: Aerial location with arrow pointing to corresponding manhole.