

# New Bedford Regulator Specification Sheet

**Regulator #:** R-004H

**Location:** Cove Rd. at Bonney St.

**Date:** 6/25/25

## Structure Measurements

**Structure Type:** Single manhole

**Rim Elevation (ft City Datum):** 6.5

**Regulator Type:** Fixed Weir

**Overflow Height (ft or in):** 25"

**Rim to Top of Weir (ft):** 7.4

**Weir Dims (ft or in):** Length: 6.17', Width: varies,  
Height: 14-25"

**Influent pipe ø (in):** 74x72

**Rim to Influent Invert (ft):** 9.5

**Dry Weather Connection ø (in):** 24

**Rim to Dry Weather Invert (ft):** 9.3

**Overflow pipe ø (in):** 74x72

**Rim to Overflow Invert (ft):** 9.5

## Sensor Measurements

**Block Present:** Yes

**Level Sensor Status:** Metered

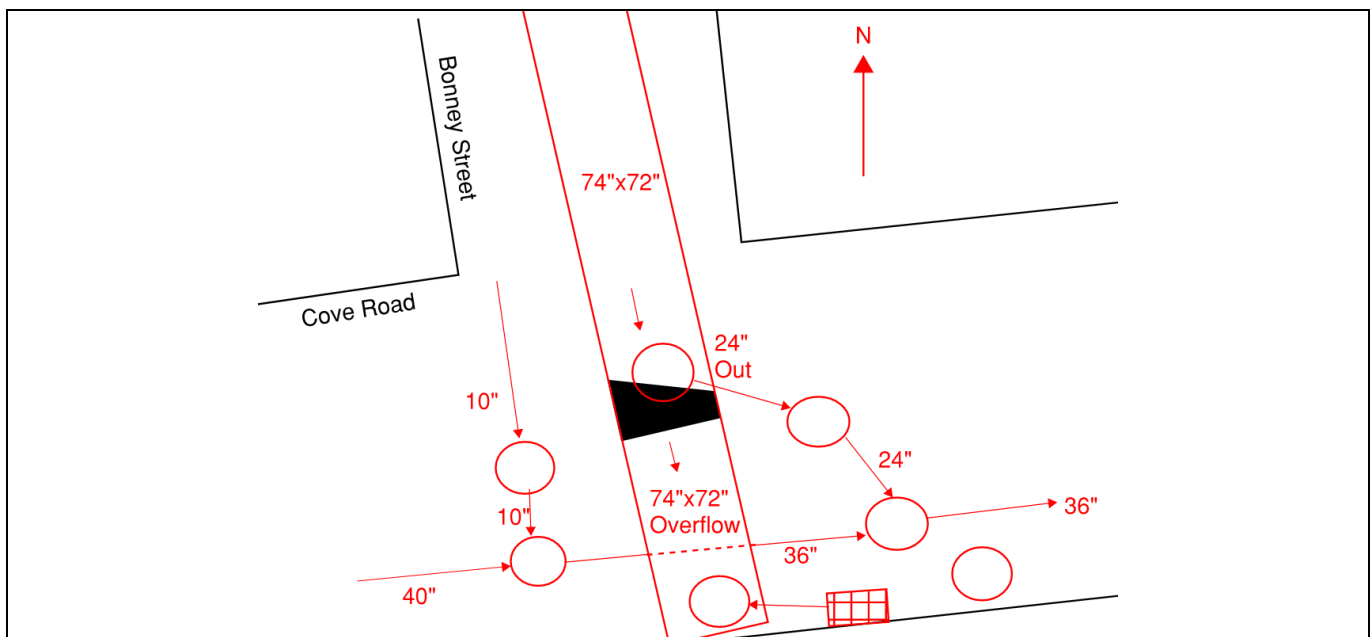
**Sensor Installation Date:** 10/15/2020

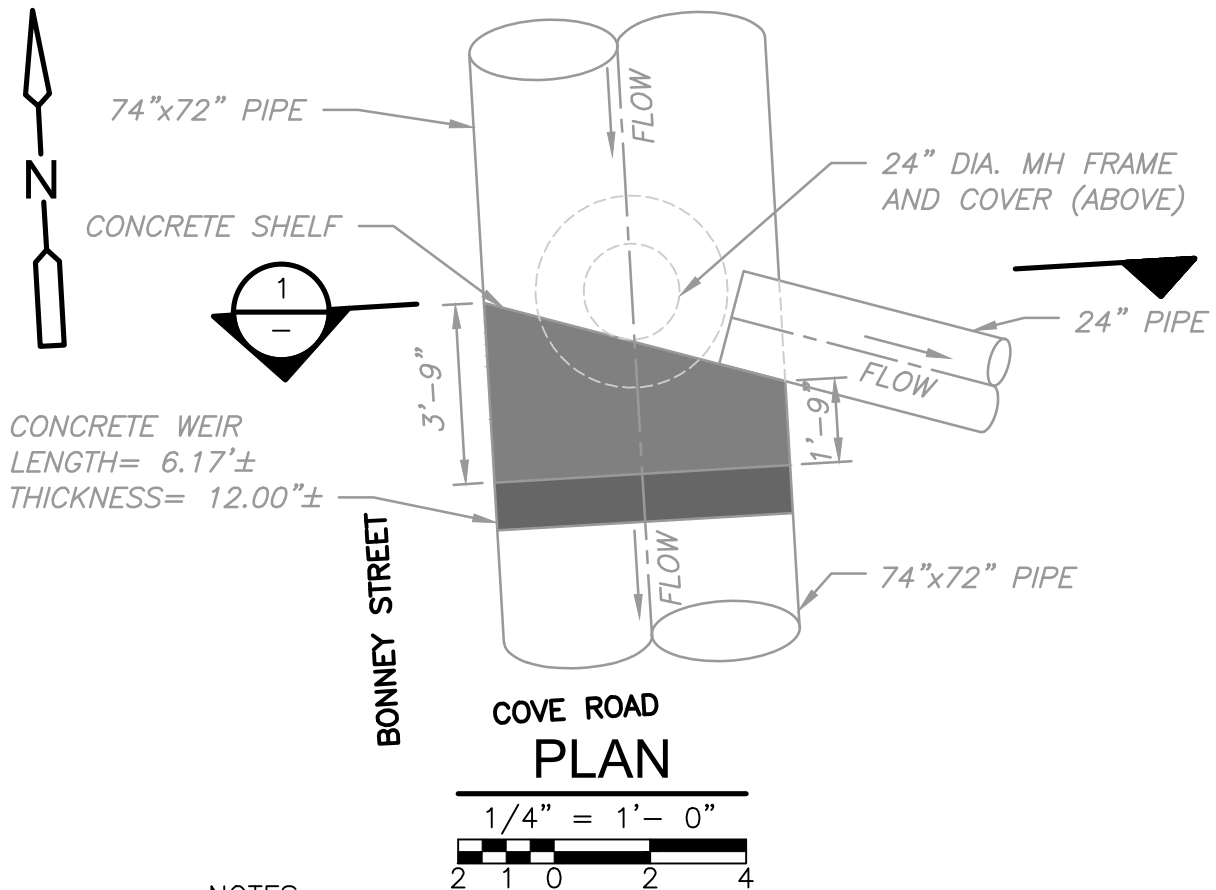
**Intra-System Status:** Yes

**Tide Gate Status:** Gate at outfall

**Notes:** Infiltration was observed in a video from 2020; water was coming back from the 74"x72" outflow pipe through the west side of the weir.

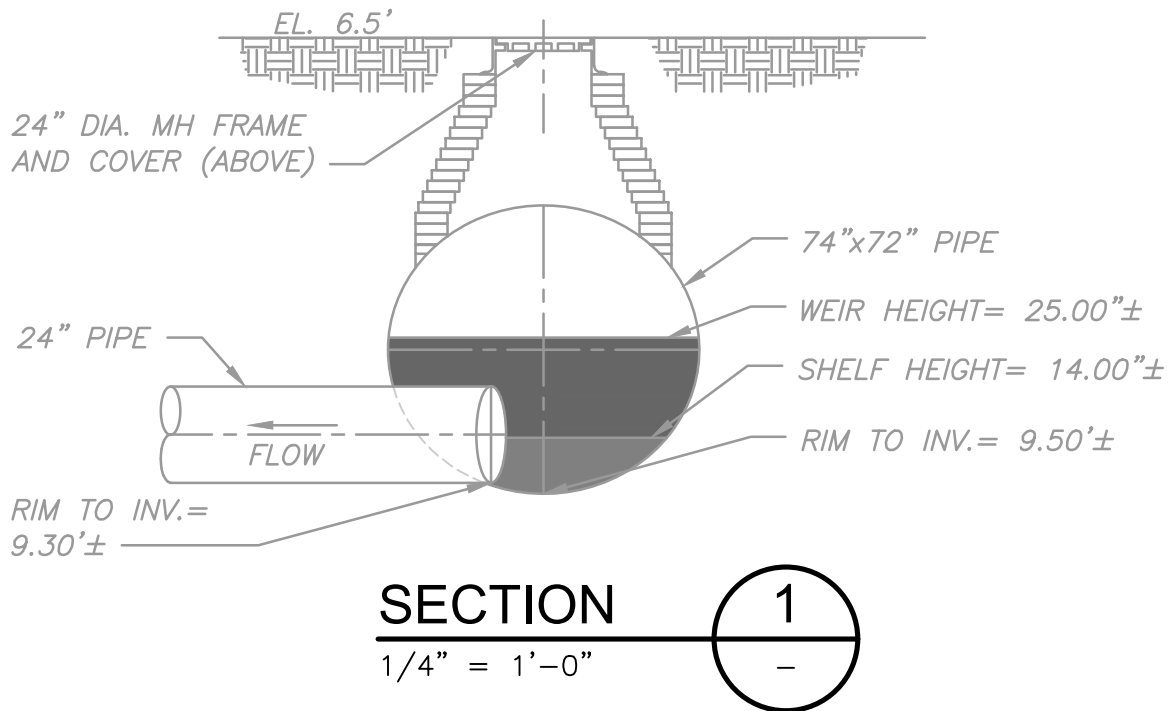
## **Location Sketch:**





**NOTES:**

- 1.ELEVATIONS SHOWN ARE IN NEW BEDFORD CITY DATUM.
- 2.INFILTRATION THROUGH WEIR NOTED IN 2020.





GOSNOLD MILL CORPORATION

CONDENSER WATER SEWER 24" PIPE  
ORCHARD

STREET

18" PIPE

HUE CANE

BARRIER

ROAD

004H

BONNEY

STREET

NELSON

ST.

JOUVETT ST.

CRAPO

STREET



## REGULATOR FIELD PHOTOS

**Figure 1**



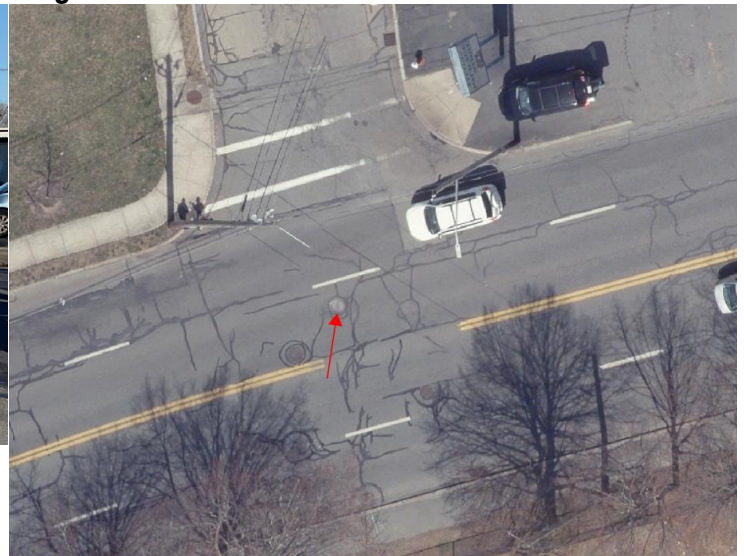
**Figure 2**



**Figure 3**



**Figure 4**



### Descriptions:

**Figure 1:** Inside of R-004H. Inflow, outflow, and weir visible.

**Figure 2:** Inside of R-004H. Inflow, outflow, and weir visible. More of brick pipe visible.

**Figure 3:** Location of manhole facing north towards Bonney Street.

**Figure 4:** Aerial location with arrow pointing to corresponding manhole.