

New Bedford Regulator Specification Sheet

Regulator #: R-004G

Location: Crapo St. at Rivet St.

Date: 6/25/25

Structure Measurements

Structure Type: Weir between two manholes

Rim Elevation (ft City Datum): 9.2

Regulator Type: Fixed Weir

Overflow Height (ft or in): 2'

Rim to Top of Weir (ft): 4.8

Weir Dims (ft or in): Length: 6.5', Width: 6', Height: 2.0'

Influent pipe ø (in): 54

Rim to Influent Invert (ft): 6.8

Dry Weather Connection ø (in): 24

Rim to Dry Weather Invert (ft): 6.9

Overflow pipe ø (in): 54

Rim to Overflow Invert (ft): 7.1

Sensor Measurements

Block Present: No

Level Sensor Status: Metered

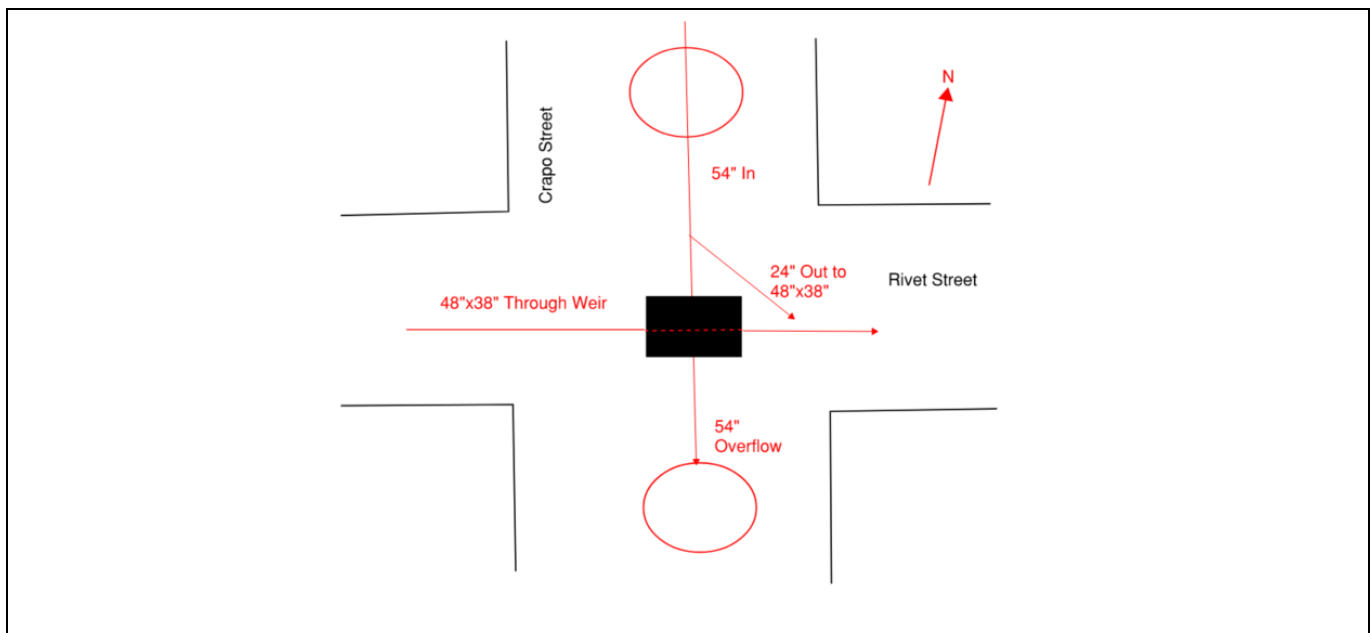
Sensor Installation Date: 2/28/2018

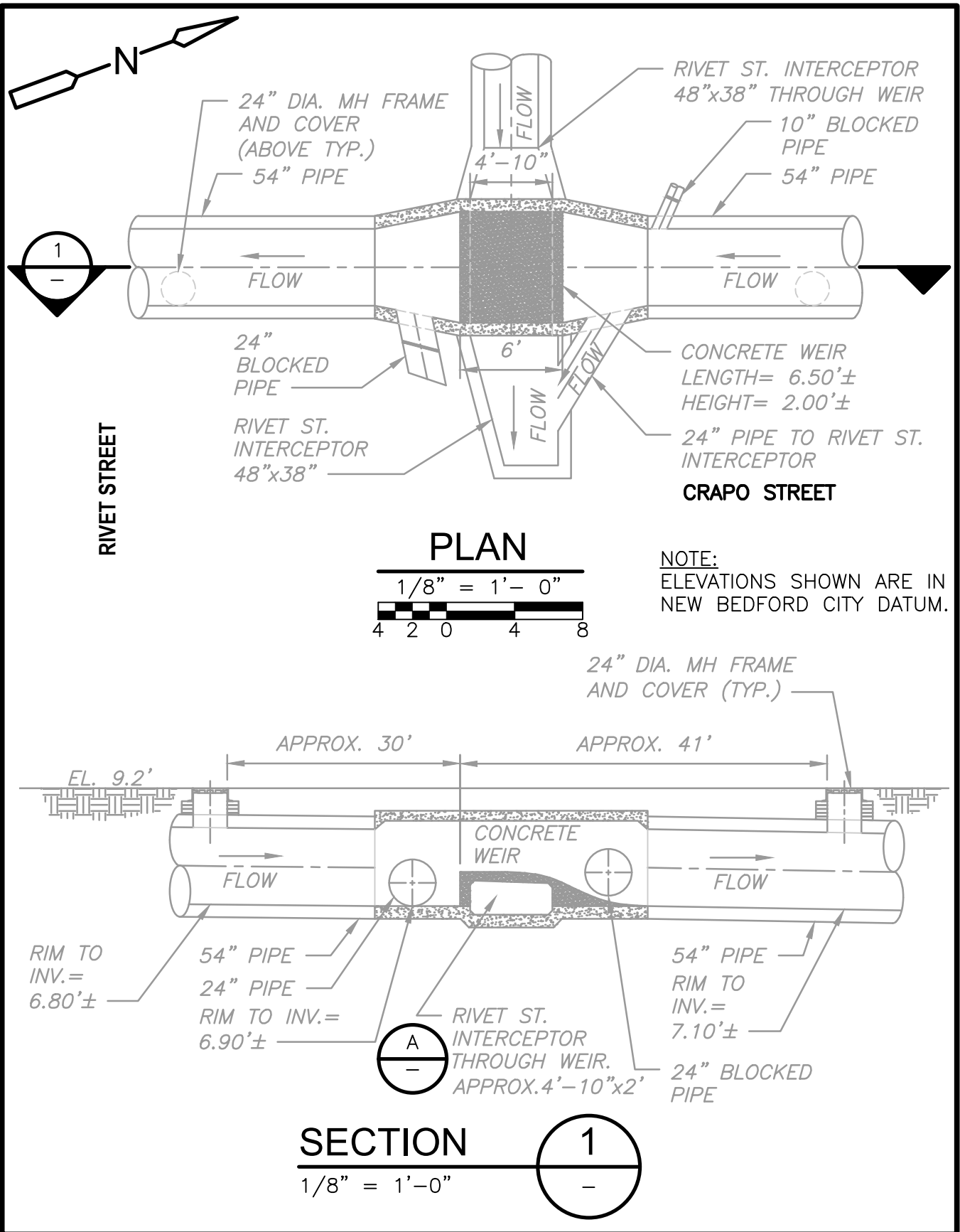
Intra-System Status: Yes

Tide Gate Status: Gate at outfall

Notes: Upstream and downstream manholes are over 30' away from the weir. Dimensions were taken from record drawing- Rivet St. Interceptor Crossing at Crapo Street and confirmed by pictures and videos. The 2018 ADS Depth meter is installed in manhole upstream of weir. 2019 Depth and Velocity Sensor was installed in manhole downstream of weir.

Location Sketch:







REGULATOR FIELD PHOTOS

Figure 1



Figure 2



Figure 3

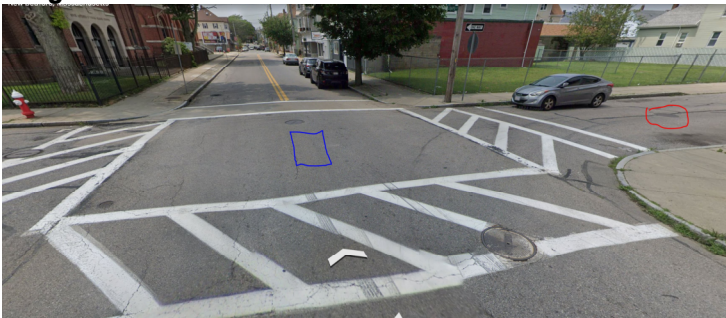
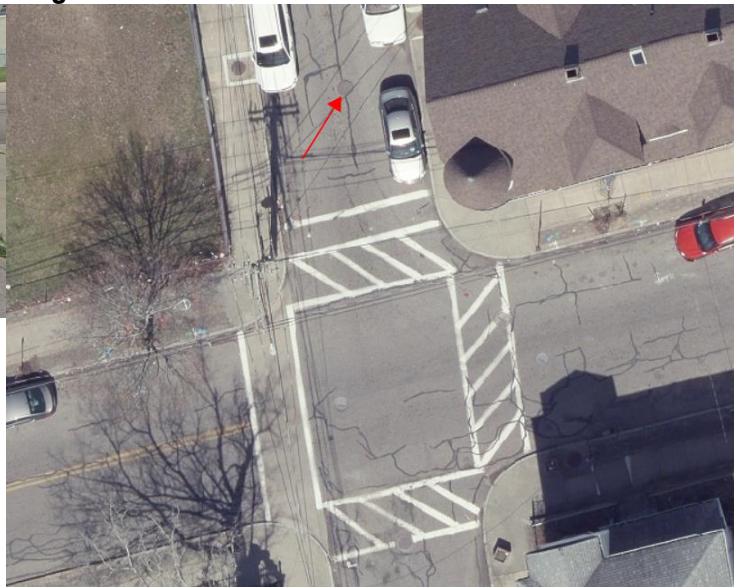


Figure 4



Descriptions:

Figure 1: Inside of R-004G. Brick pipe visible.

Figure 2: Inside of R-004G. Weir, outflow, overflow, and downstream manhole visible.

Figure 3: Google Earth snapshot facing west along Rivet Street. Upstream manhole in red and approx. weir location in blue.

Figure 4: Aerial location with arrow pointing to scanned manhole upstream of weir.