

New Bedford Regulator Specification Sheet

Regulator #: R-004E

Location: Bonney St. at Rivet St.

Date: 6/25/25

Structure Measurements

Structure Type: Weir between two manholes

Rim Elevation (ft City Datum): 10.3

Regulator Type: Fixed Weir

Overflow Height (ft or in): 3.5'

Rim to Top of Weir (ft): 5.7

Weir Dims (ft or in): Length: 6', Width: 20"(TOP)-
96"(BASE), Height: 3.50'

Influent pipe ø (in): 72

Rim to Influent Invert (ft): 9.6

Dry Weather Connection ø (in): 36x12

Rim to Dry Weather Invert (ft): 8

Overflow pipe ø (in): 72

Rim to Overflow Invert (ft): 9.6

Sensor Measurements

Block Present: No

Level Sensor Status: Meter Removed

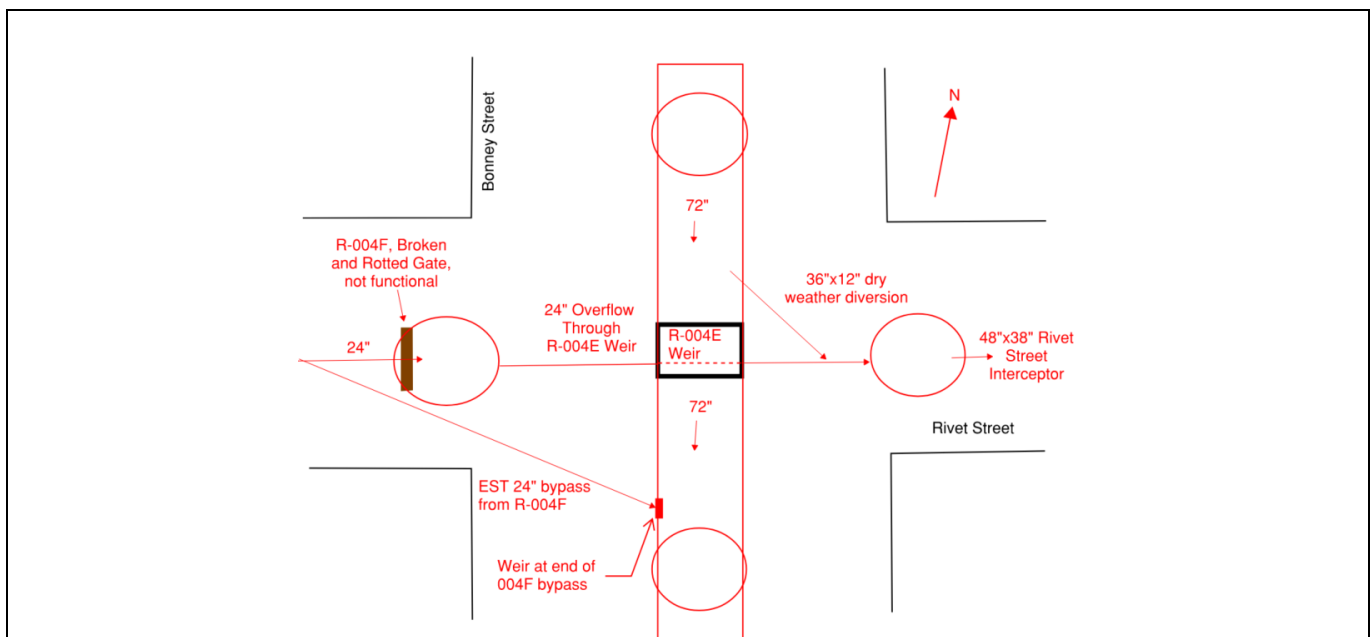
Sensor Installation Date: n/a

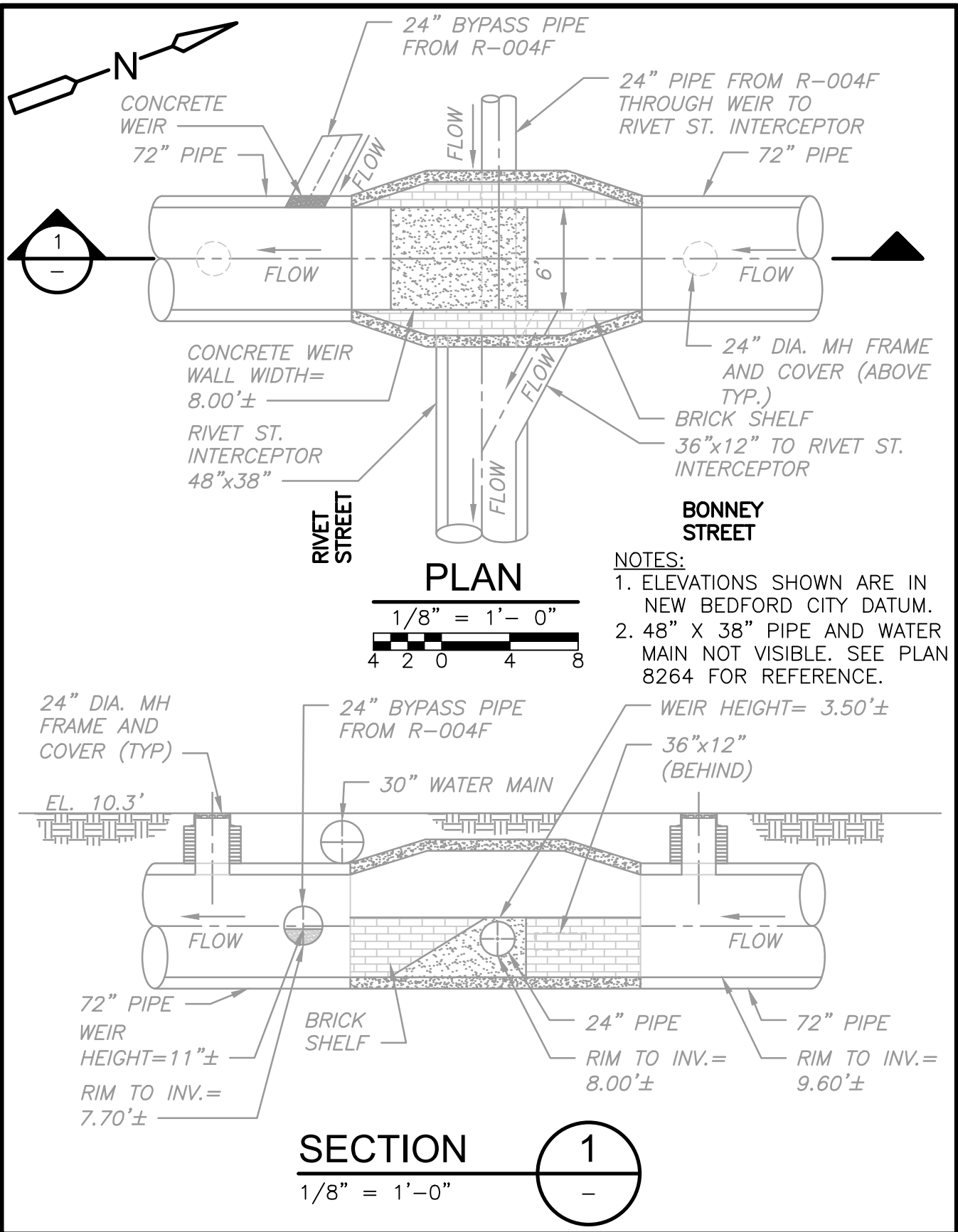
Intra-System Status: Yes

Tide Gate Status: Gate at outfall

Notes: Only upstream side of weir was scanned by Redzone in 2023. Other dimensions were estimated from pictures and record drawing-8264 - NB INTERCEPTING SEWER Bonney St Sewer crossing at Rivet St.

Location Sketch:







REGULATOR FIELD PHOTOS

Figure 1



Figure 2



Figure 3



Figure 4



Descriptions:

Figure 1: Looking down into the manhole for R-004E. Crumbling ring with debris visible.

Figure 2: Inside of R-004E. Weir, overflow and downstream manhole visible.

Figure 3: Inside of R-004E. Dry weather flow and a portion of the weir wall are visible.

Figure 4: Aerial location with arrow pointing to manhole directly upstream of R-004E.