

# New Bedford Regulator Specification Sheet

**Regulator #:** R-004D**Location:** Orchard St. and Rivet St.**Date:** 6/25/25

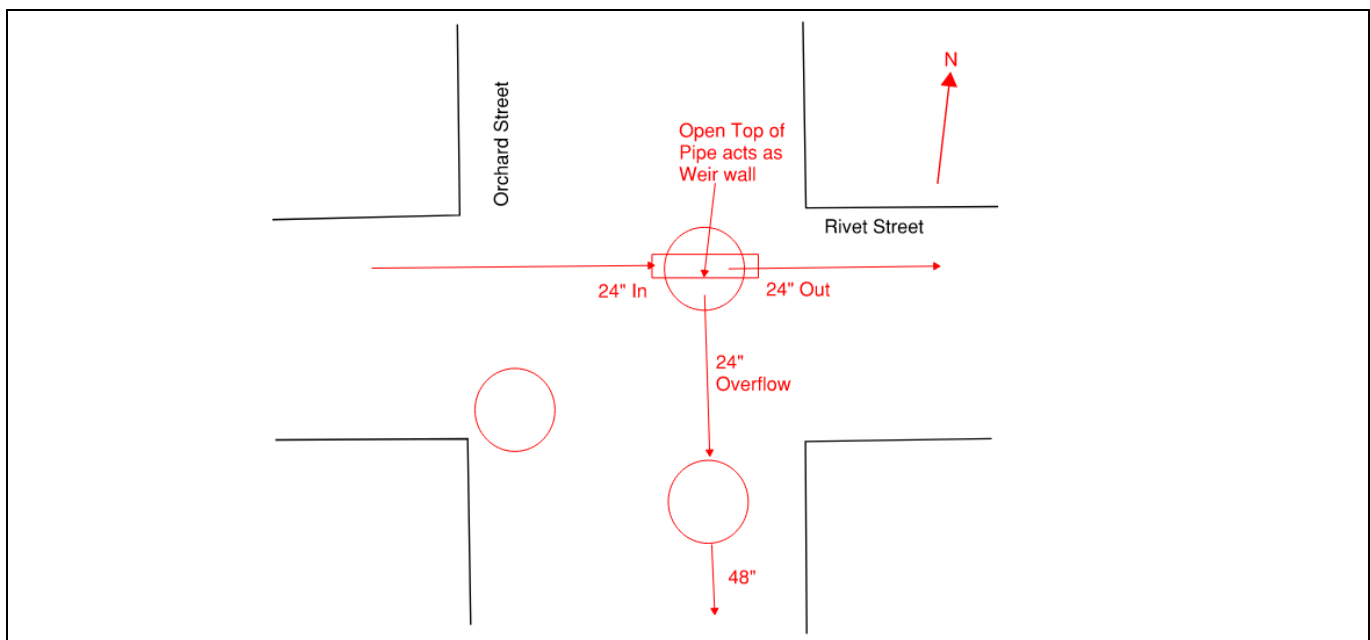
## Structure Measurements

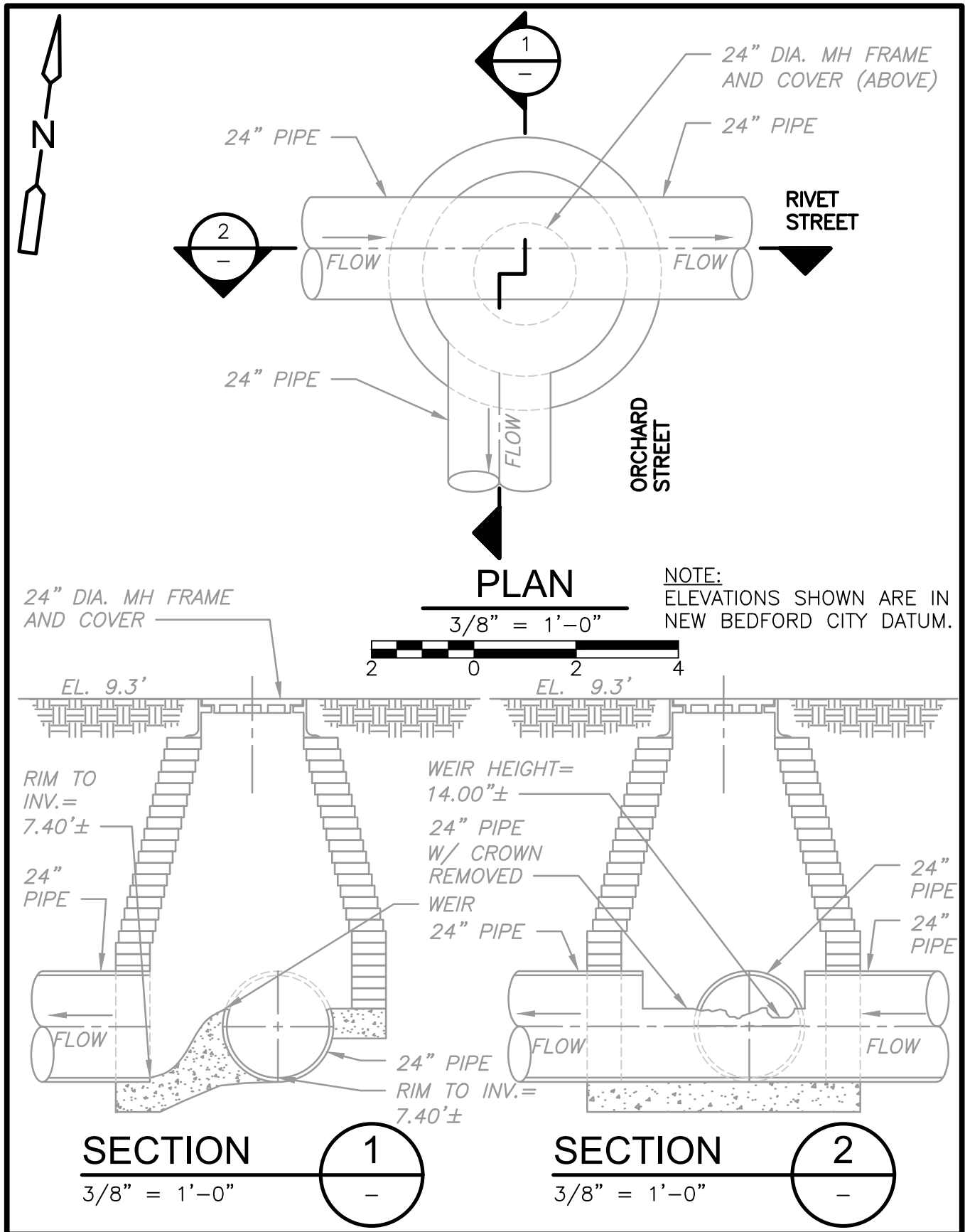
**Structure Type:** Single manhole**Rim Elevation (ft City Datum):** 9.3**Regulator Type:** Fixed Weir**Overflow Height (ft or in):** 14"**Rim to Top of Weir (ft):** 6.23**Weir Dims (ft or in):** Crown removed on 24" pipe**Influent pipe ø (in):** 24**Rim to Influent Invert (ft):** 7.4**Dry Weather Connection ø (in):** 24**Rim to Dry Weather Invert (ft):** 7.4**Overflow pipe ø (in):** 24**Rim to Overflow Invert (ft):** 7.4

## Sensor Measurements

**Block Present:** No**Level Sensor Status:** Not Metered**Sensor Installation Date:** n/a**Intra-System Status:** Yes**Tide Gate Status:** None**Notes:** The dry weather connection to the interceptor has not been plugged

## Location Sketch:

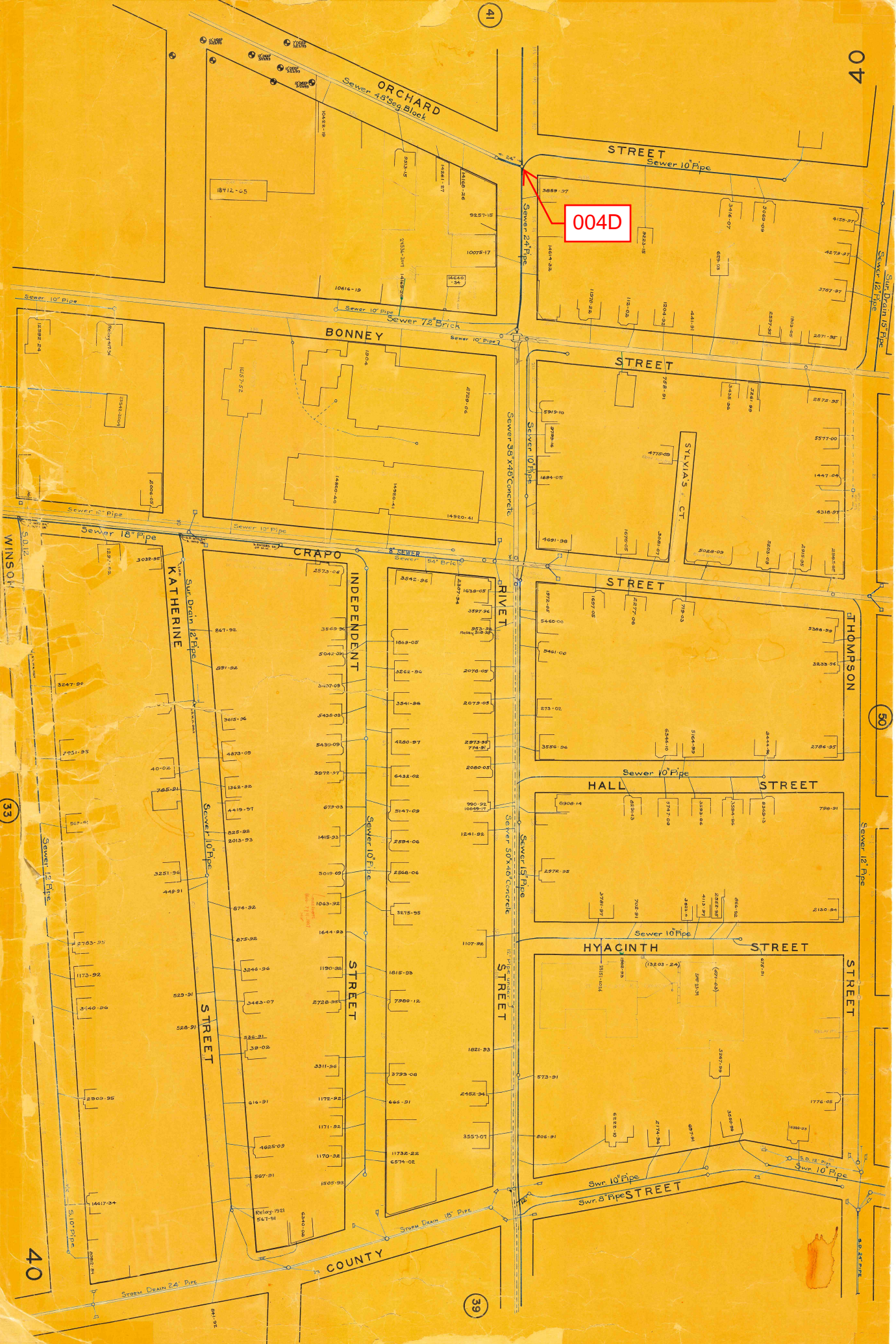






04

004D



33

50

39

40



## REGULATOR FIELD PHOTOS

**Figure 1**



**Figure 2**



**Figure 3**



**Figure 4**



### Descriptions:

**Figure 1:** Inside of R-004D. Cut pipe acting as weir visible.

**Figure 2:** Outside of manhole facing SE towards Primo's Pizza.

**Figure 3:** Google Earth snapshot outside of manhole facing NE towards Star Market.

**Figure 4:** Aerial location with arrow pointing to corresponding manhole.