

## CSO SPEC SHEET

Structure #: REG 004 A

Date: 08/ 17 / 2012

Insp. By: \_\_\_\_\_

Location: The intersection of Cove Rd. and Rockdale A

Structure Type: Poured in place Concrete

Structure DIM's: \_\_\_\_\_

Size of Sewer Pipe: 24" (+-)

Size of Storm Drain Pipe: 30" (+-)

Sewer Direction: North and North-West

Regulator Type: Weir Wall/Block regulator

Weir Dim's: 1' x 6'

Rim to Top of Weir: 6.5'

Rim to Storm Drain Invert: 7.6'

Rim to Top of Sewer (Normal Flow): 8.1'

Free Board: 1.6'

Over All Rating: (Circle One)

Poor

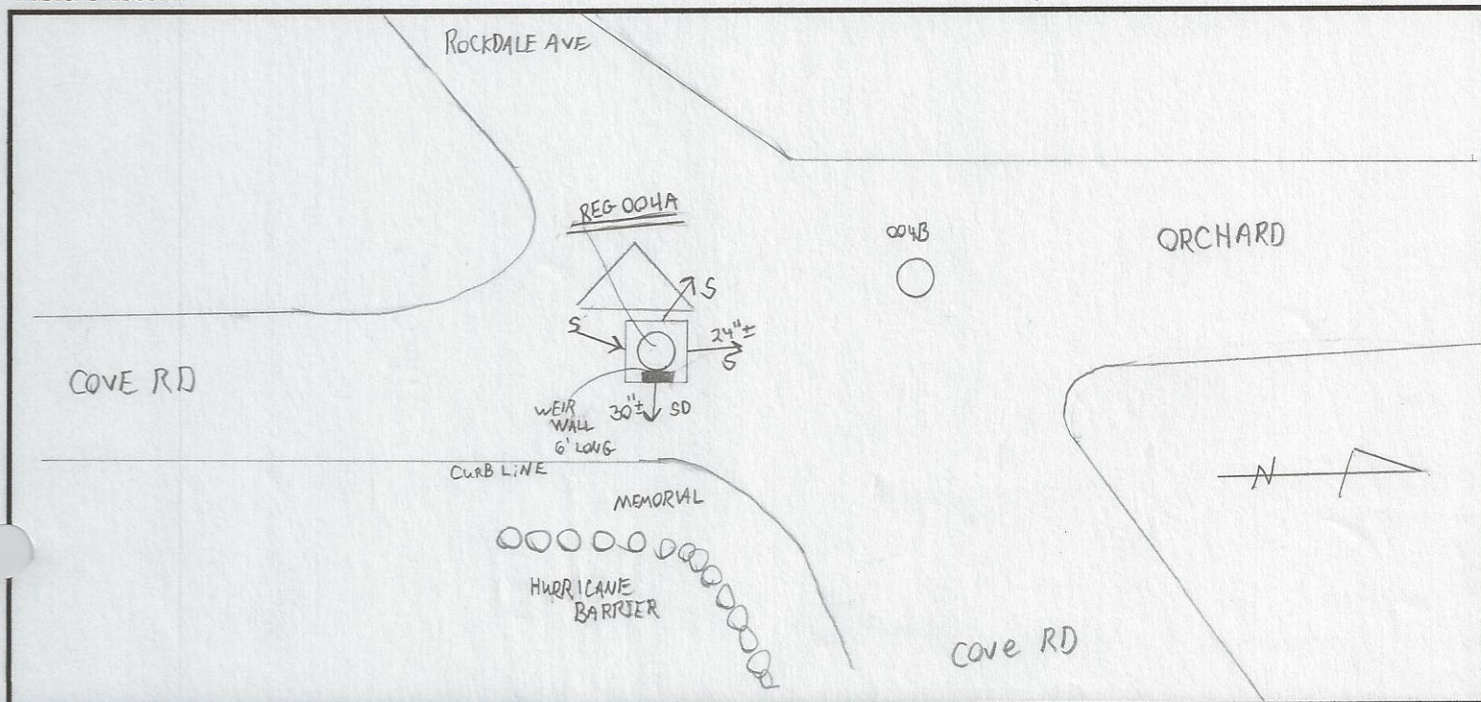
Fair

Good

Excellent

Comments: No repair needed as of 8/17/2012.

Field Sketch:





## CSO FIELD PHOTOS

Structure#: Regulator 004A

Location: Rockdale Ave. and Cove Rd.

Figure 1.

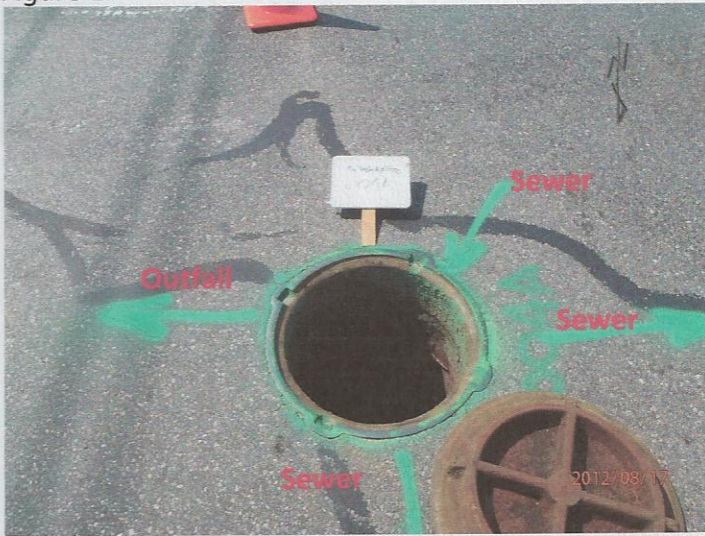


Figure 2.

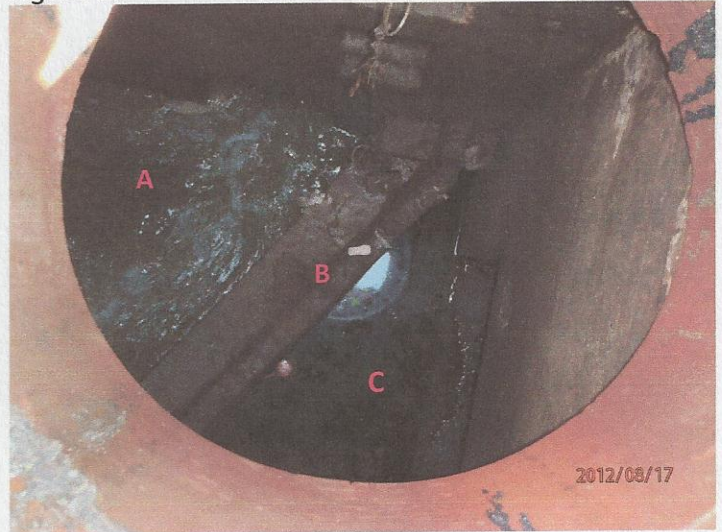
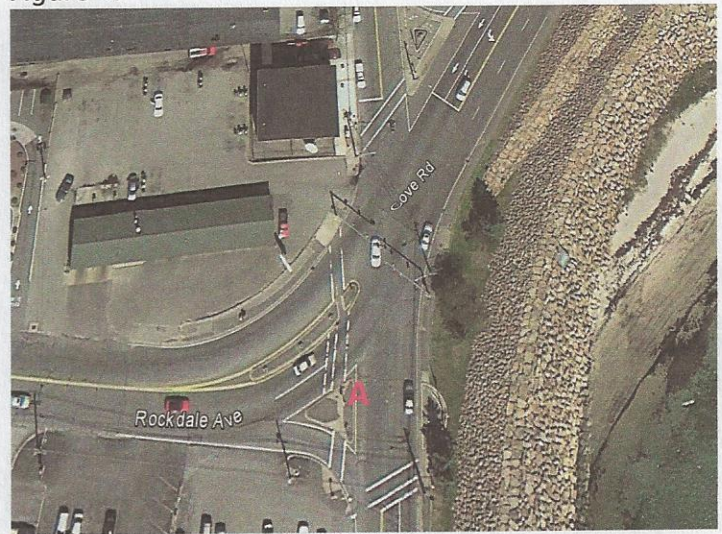


Figure 3.



Figure 4.



### Descriptions

**Figure 1:** Street view of open manhole to regulator 004A showing sewer incoming and outgoing directions as well as the storm drain outfall.

**Figure 2:** Inside view of manhole. A- Sewer; B- Weir Wall; C- Storm Drain.

**Figure 3:** Street view of Regulator 004A, Facing the Hurricane Barrier and a memorial.

**Figure 4:** Google Earth image of intersection where Regulator 004A is located. A- Regulator 004A



