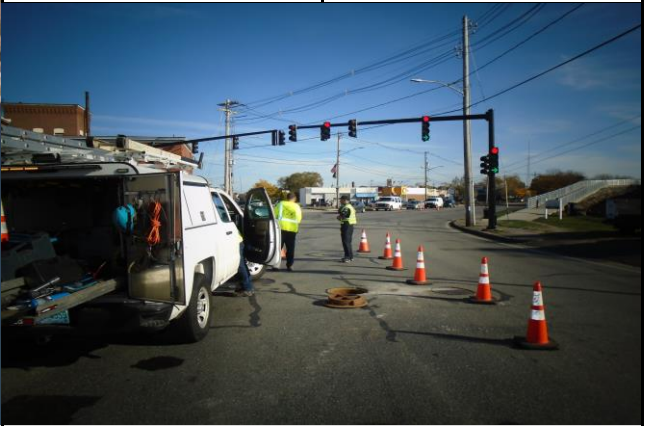


New Bedford, Ma			Site I.D.	
Flow Monitoring Site Installation Report			004A	

Site Address / Location:	Cove Rd at Rockdale Ave	Monitor Series	Location Type
		ECHO	Temporary
Site Access:	Drive up in intersection	Pipe Size (H x W)	Pipe Shape
		10 X 10	Circular



Manhole #	System Characteristics
	Commercial
Access	Traffic
Drive	Medium



Installation Information	
Installation Date:	Installation Type:
Thursday, October 15, 2020	Level Only
Monitoring Location (Sensors):	Monitor Location:
	Manhole
Sensors / Devices:	Pressure Sensor Range (psi)
ECHO Depth	
Installation Confirmation:	
Confirmation Time:	Pipe Size (HxW)
9:11:00 AM	10 X 10
Depth of Flow (Wet DOF) (in)	Range (Air DOF) (in)
2.25	
Downlooker Physical Offset (in)	Measurement Confidence (in)
Peak Velocity (fps)	Velocity Sensor Offset (in)
Silt (in)	Silt Type
0	



Hydraulic Comments:	
Manhole / Pipe Information:	
Manhole Depth (Approx. FT):	Manhole Configuration
100.25	Regulator
Manhole Material:	Manhole Condition:
Concrete	Good
Manhole Opening Diameter (in)	Manhole Diameter (Approx.):
Manhole Cover	Manhole Frame
Concealed	Normal
Active Drop Connections	Air Quality:
	Good
Pipe Material	Pipe Condition:
Vitrified Clay Pipe	Good
Communication Information:	
Communication Type	Antenna Location
Wireless	Drilled Pavement / Concrete

Additional Site Info. / Comments:	
Coordinates: N 41.613192 / W -70.930597 Meter SN# 1125 IP# 166.219.186.199	
Detail needed at this site	
ADS Project Name:	New Bedford, Ma
ADS Project Number:	32673.52