

# New Bedford Regulator Specification Sheet

**Regulator #:** R-003A

**Location:** Cove Rd at Padanaram Ave.

**Date:** 6/25/25

## Structure Measurements

**Structure Type:** Single manhole

**Rim Elevation (ft City Datum):** 5.9

**Regulator Type:** High Level Outlet

**Overflow Height (ft or in):** 4.9'

**Rim to Top of Weir (ft):** n/a

**Weir Dims (ft or in):** High Level 24" Outlet

**Influent pipe ø (in):** 22, 12, 10

**Rim to Influent Invert (ft):** 9, 9, 3.3

**Dry Weather Connection ø (in):** 24

**Rim to Dry Weather Invert (ft):** 9

**Overflow pipe ø (in):** 24

**Rim to Overflow Invert (ft):** 4.1

## Sensor Measurements

**Block Present:** No

**Level Sensor Status:** Metered

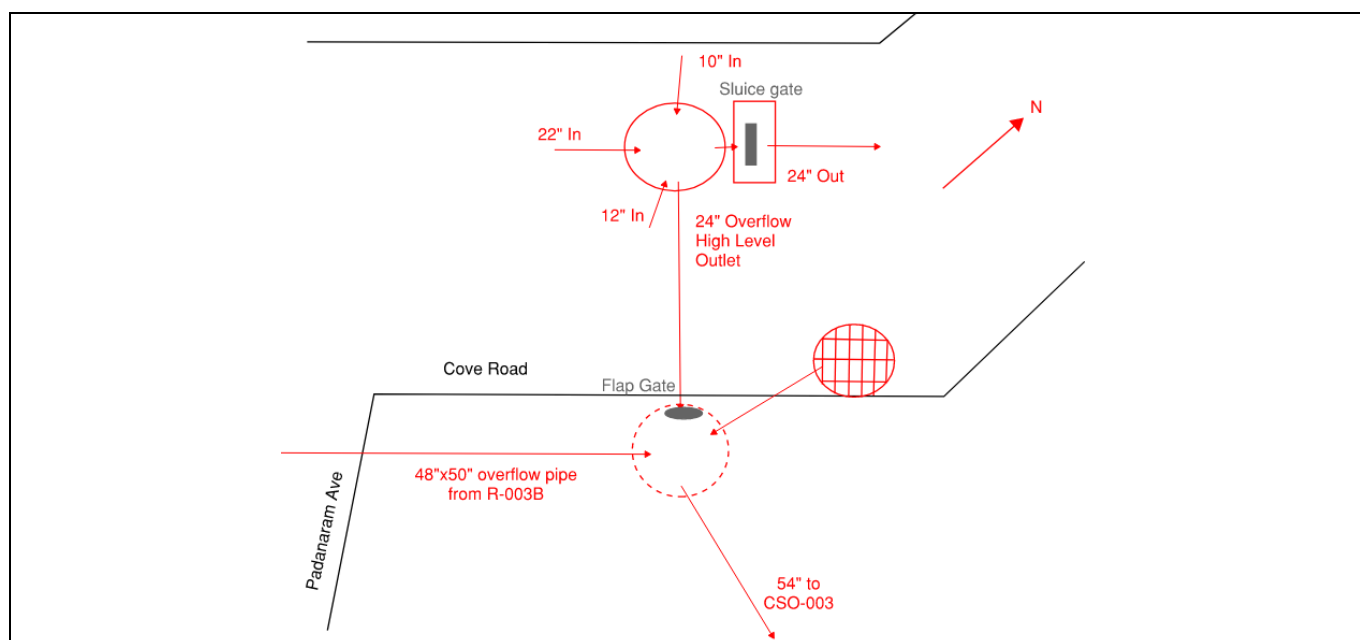
**Sensor Installation Date:** 2/28/2018

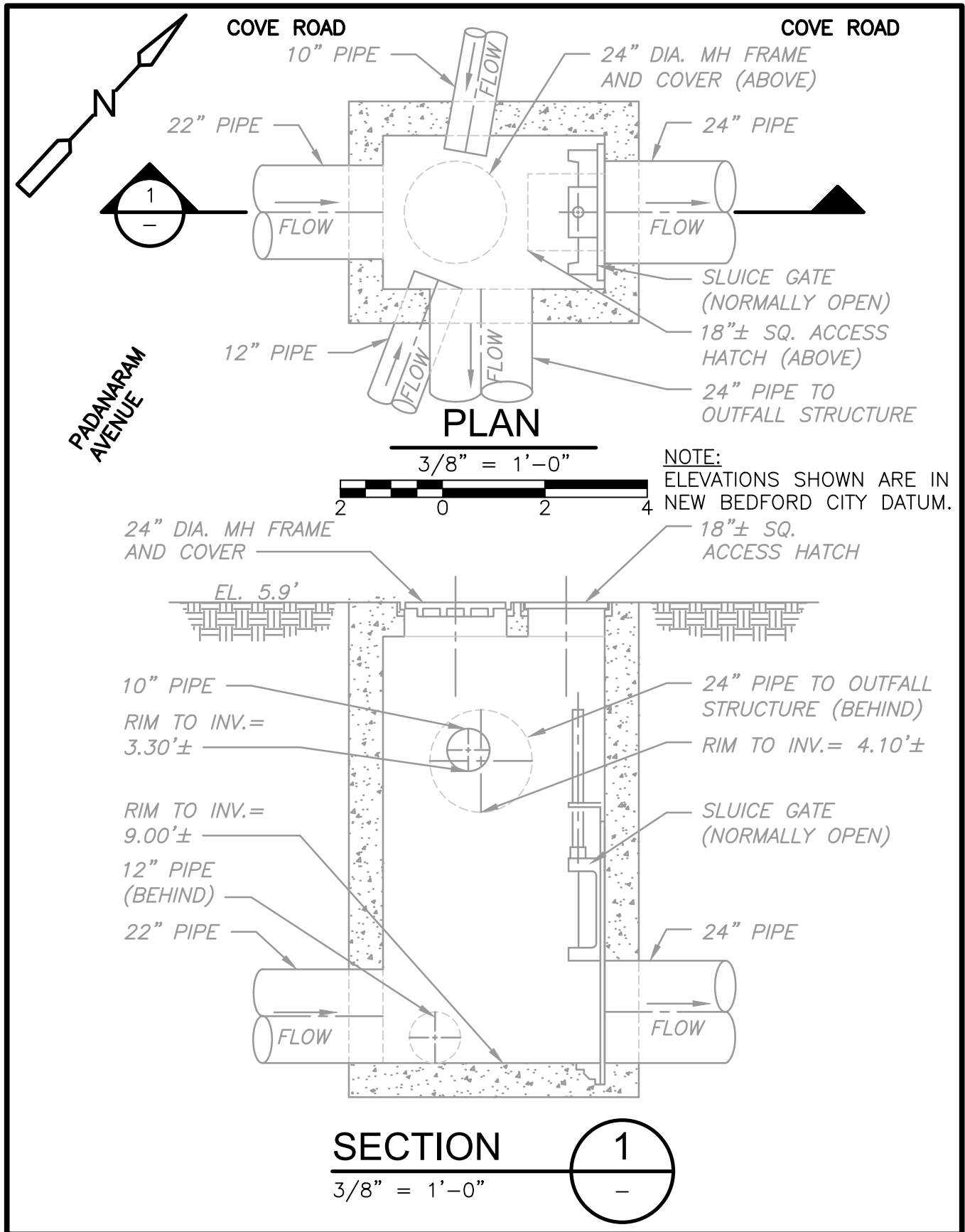
**Intra-System Status:** No

**Tide Gate Status:** yes; Flap gate in downstream MH

**Notes:** The Sluice gate is in good condition. The high level outlet goes to MH-7242, where there is a tide gate preventing backflow. The overflow from R-003B enters MH-7242. MH-7242 also has a meter. See B-631 Cove Rd Interceptor Contract #9 (Sht 3).pdf

## Location Sketch:







003A

Flap Gate

## REGULATOR FIELD PHOTOS

**Figure 1**



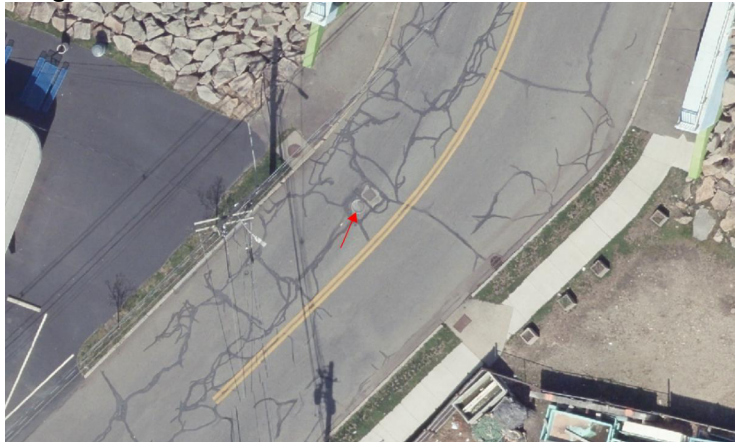
**Figure 2**



**Figure 3**



**Figure 4**



### Descriptions:

**Figure 1:** Inside of R-003A. Sluice gate visible.

**Figure 2:** Inside of R-003A. High level outlet (Overflow) visible.

**Figure 3:** Outside of manhole facing Padanaram Ave.

**Figure 4:** Aerial location with arrow pointing to corresponding manhole.