

R-037A

PURCHASE ST
New Bedford

Inspection Status: Remote Inspection
Inspection Level: Level 2

	Quick	Index	Rating
Overall	411D	1.1	31
Structural	1A00	1	14
O&M	411A	1.2	17

Project: | New Bedford 3D Regulator Inspections

Owner: New Bedford, MA

Customer: CDM Smith

MANHOLE

MH Use: Sanitary

Year Constructed:

Evidence of Surcharge: Yes

Access Type: Manhole

Year Renewed:

MEASUREMENTS

Rim to Invert: 10.9ft

Northing:

GPS Accuracy:

Rim to Grade:

Easting:

Additional Information: 5.6

Grade to Invert: 10.9ft

Elevation:

Rim to Grade Exposed:

Vertical Datum:

COVER

Type: Solid

Center Cover Size:

Bearing Surface Diameter: 28"

Shape: Circular

Cover Material: Cast Iron

Bearing Surface Width: 1"

Size: 26"

Hole Diameter:

Cover/Frame Fit: Good

Size Width:

Hole Number:

Cover Condition: Sound

COVER INSERT

Insert Type: None

Insert Condition:

COVER ADJUSTMENT RING

Ring Type: Solid

Ring Condition: Sound

Ring Material: Cast Iron

Ring Height:

FRAME

Frame Material: Cast Iron

Clear Opening Width: 24"

Seal Inflow: None

Bearing Surface Width: 1"

Frame Depth:

Frame Condition: Sound

Bearing Surface Depth: 9"

Offset Distance:

Clear Opening Diameter: 24"

Seal Condition: Sound



CHIMNEY

Chimney Present: Yes

Chimney Depth: 2ft

Clear Opening:

Chimney I/I:

First Material: Concrete (precast)

Second Material:

Lining Interior:

Lining Exterior:

Chimney Condition:

CONE

Cone Depth:

Cone Type: Not Present

Clear Opening:

First Material:

Second Material:

Lining Interior:

Lining Exterior:

Cone Condition:

WALL

Wall Diameter:

Wall Width:

Wall Depth: 8ft

First Material: Concrete (precast)

Second Material:

Lining Interior:

Lining Exterior:

Wall Condition:

BENCH

Bench Present: Yes

Material: Brick

Lining:

Bench Condition:

CHANNEL

Channel Present: Yes

Material: Brick

Type: Pipe

Exposure: Fully Opened

Channel Condition:

STEP

Number: 7

Material: Metal

PIPE CONNECTION INFORMATION

Pipe No.	Clock	Rim to Inv.	Direction	Material	Shape	Height	Width	Cond.	Seal Cond.	Pipe Type	Struct. ID	Comments
1	6	10.9"	Out	Concrete Pipe (non-reinforced)	Circular	14"		Sound	Defective	Gravity Connection		
2	12	10.9"	In	Polyvinyl Chloride	Circular	14"		Sound	Sound	Gravity Connection		
3	5	10.9"	In	Polyvinyl Chloride	Circular	14"		Sound	Sound	Gravity Connection		

GENERAL INFORMATION

Surveyed By:

Reviewed By: M. Bierman

Weather:

Purpose of Survey: Routine assessment

Certificate Number: U0219070304856

Reviewer Number: P0035145122021

Precleaning: No Pre-Cleaning

PO Number:

Media Label:

Date & Time 2023-12-15

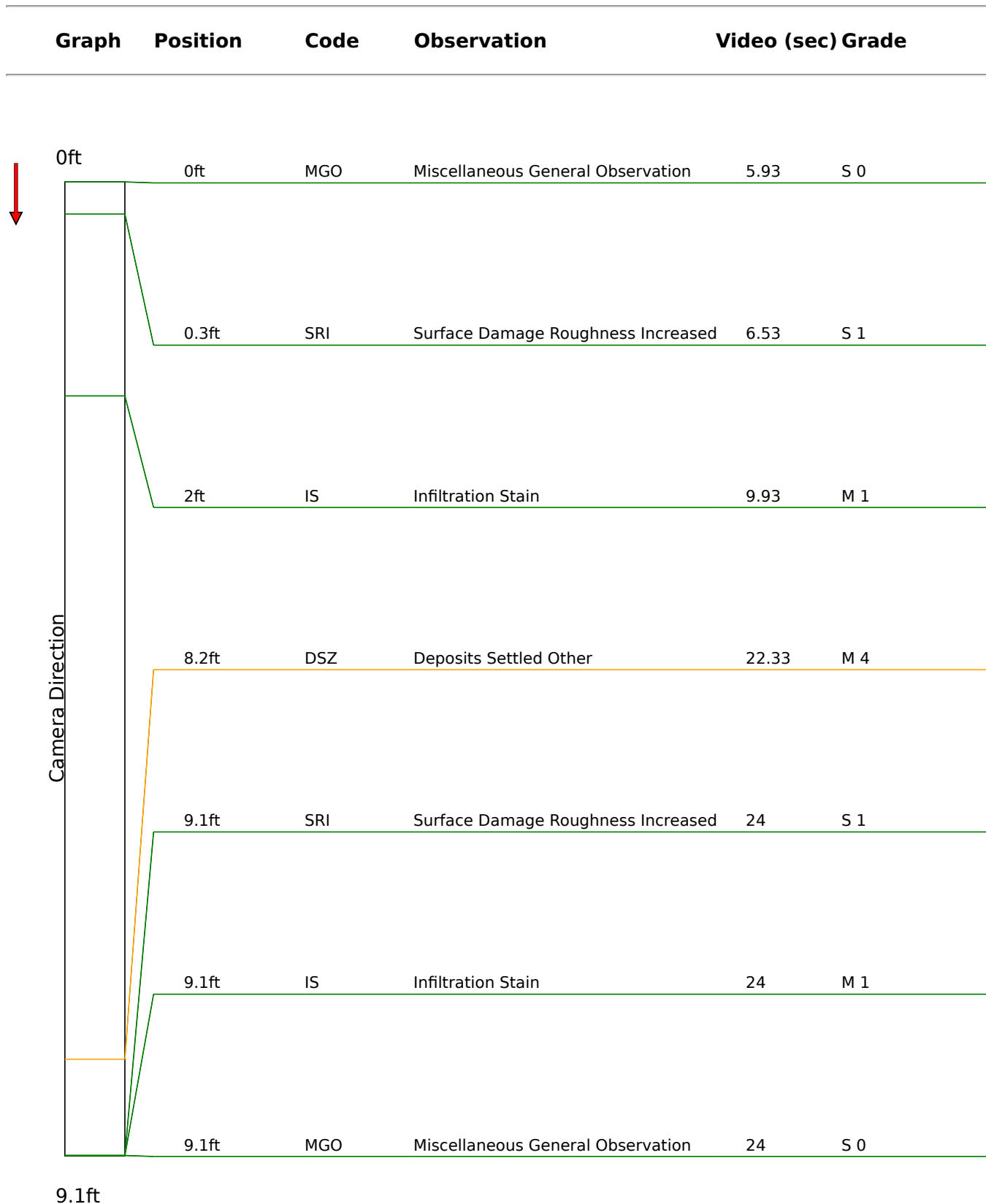
Sheet No.:

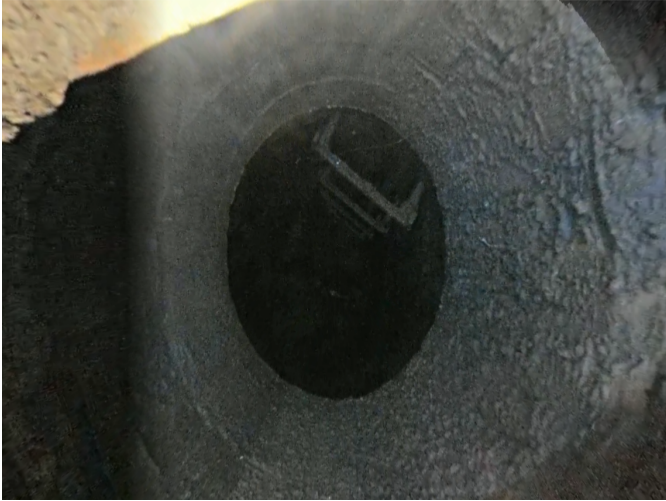
Date Cleaned:

Work Order:

Consequence of Failure:

Condition Report





Code: **MGO**
Description: **Miscellaneous General Observation**

Distance: **0ft**
Structural Grade: **0**
O&M Grade: **0**
Clock Start/From:
Clock To:
1st Value:
2nd Value:
Value Percent:
Continuous Index:
Within Eight" of Joint: **False**
Remarks: **Start inspection**



Code: **SRI**
Description: **Surface Damage Roughness Increased**

Distance: **0ft**
Structural Grade: **1**
O&M Grade: **0**
Clock Start/From: **12**
Clock To: **12**
1st Value:
2nd Value:
Value Percent:
Continuous Index: **S01**
Within Eight" of Joint: **False**
Remarks:



Code: **IS**
Description: **Infiltration Stain**

Distance: **2ft**
Structural Grade: **0**
O&M Grade: **1**
Clock Start/From: **12**
Clock To: **12**
1st Value:
2nd Value:
Value Percent:
Continuous Index: **S02**
Within Eight" of Joint: **False**
Remarks:



Code: **DSZ**
Description: **Deposits Settled Other**

Distance: **8ft**
Structural Grade: **0**
O&M Grade: **4**
Clock Start/From: **12**
Clock To:
1st Value:
2nd Value:
Value Percent: **50**
Continuous Index:
Within Eight" of Joint: **False**
Remarks: **Mixed debris in channel**



Code: **SRI**
Description: **Surface Damage Roughness Increased**

Distance: **9ft**
Structural Grade: **1**
O&M Grade: **0**
Clock Start/From: **12**
Clock To: **12**
1st Value:
2nd Value:
Value Percent:
Continuous Index: **F01**
Within Eight" of Joint: **False**
Remarks:



Code: **IS**
Description: **Infiltration Stain**

Distance: **9ft**
Structural Grade: **0**
O&M Grade: **1**
Clock Start/From: **12**
Clock To: **12**
1st Value:
2nd Value:
Value Percent:
Continuous Index: **F02**
Within Eight" of Joint: **False**
Remarks:



Code: **MGO**
Description: **Miscellaneous General Observation**

Distance: **9ft**
Structural Grade: **0**
O&M Grade: **0**
Clock Start/From:
Clock To:
1st Value:
2nd Value:
Value Percent:
Continuous Index:
Within Eight" of Joint: **False**
Remarks: **End inspection**

