

R-036A

PURCHASE ST
New Bedford

Inspection Status: Remote Inspection
Inspection Level: Level 2

	Quick	Index	Rating
Overall	2A1C	1.3	43
Structural	1600	1	6
O&M	2A1B	1.4	37

Project: | New Bedford 3D Regulator Inspections

Owner: New Bedford, MA

Customer: CDM Smith

MANHOLE

MH Use: Sanitary

Access Type: Manhole

Year Constructed:

Year Renewed:

Evidence of Surcharge: No

MEASUREMENTS

Rim to Invert: 25.8ft

Rim to Grade:

Grade to Invert: 25.8ft

Rim to Grade Exposed:

Northing:

Easting:

Elevation:

Vertical Datum:

GPS Accuracy:

Additional Information:

COVER

Type: Solid

Shape: Circular

Size: 26"

Size Width:

Center Cover Size:

Cover Material: Cast Iron

Hole Diameter:

Hole Number:

Bearing Surface Diameter: 28"

Bearing Surface Width: 1"

Cover/Frame Fit: Good

Cover Condition: Sound

COVER INSERT

Insert Type: None

Insert Condition:

COVER ADJUSTMENT RING

Ring Type: Solid

Ring Material: Cast Iron

Ring Condition: Sound

Ring Height:

FRAME

Frame Material: Cast Iron

Bearing Surface Width: 1"

Bearing Surface Depth: 6"

Clear Opening Diameter: 24"

Clear Opening Width: 24"

Frame Depth:

Offset Distance:

Seal Condition: Sound

Seal Inflow: None

Frame Condition: Sound



CHIMNEY

Chimney Present: Yes

Chimney Depth: 0.5ft

Clear Opening:

Chimney I/I:

First Material: Concrete (precast)

Second Material:

Lining Interior:

Lining Exterior:

Chimney Condition:

CONE

Cone Depth: 1ft

Cone Type: Conical centered

Clear Opening:

First Material: Concrete (precast)

Second Material:

Lining Interior:

Lining Exterior:

Cone Condition:

WALL

Wall Diameter:

Wall Width:

Wall Depth: 14.1ft

First Material: Concrete (precast)

Second Material:

Lining Interior:

Lining Exterior:

Wall Condition:

BENCH

Bench Present: Partial - One side only

Material: Concrete (precast)

Lining:

Bench Condition:

CHANNEL

Channel Present: Yes

Material: Concrete (precast)

Type: Pipe

Exposure: Partially Opened

Channel Condition:

STEP

Number: 0

Material:

PIPE CONNECTION INFORMATION

Pipe No.	Clock	Rim to Inv.	Direction	Material	Shape	Height	Width	Cond.	Seal Cond.	Pipe Type	Struct. ID	Comments
1	6	7.5"	In	Concrete Pipe (non-reinforced)	Circular	36"		Sound	Sound	Gravity Connection		
2	9	5"	In	Vitrified Clay Pipe	Circular	5"		Sound	Sound	Gravity Connection		
3	9	7.5"	In	Concrete Pipe (non-reinforced)	Circular	35"		Sound	Sound	Gravity Connection		
4	12	7"	In	Concrete Pipe (non-reinforced)	Circular	8"		Sound	Sound	Gravity Connection		Sealed pipe
5	3	17.5"	Out	Concrete Pipe (non-reinforced)	Circular	50"		Sound	Sound	Gravity Connection		

GENERAL INFORMATION

Surveyed By:

Reviewed By: M. Bierman

Weather:

Purpose of Survey: Routine assessment

Reviewer Number: P0035145122021

Precleaning: No Pre-Cleaning

PO Number:

Media Label:


Sheet No.:

Date Cleaned:

Work Order:

Consequence of Failure:

Condition Report

Graph	Position	Code	Observation	Video (sec)	Grade
	0ft	MGO	Miscellaneous General Observation	6	S 0
	0.9ft	IS	Infiltration Stain	7.8	M 1
	0.9ft	SRI	Surface Damage Roughness Increased	7.8	S 1
	1.6ft	IW	Infiltration Weeper	9.2	M 2
	7.4ft	IS	Infiltration Stain	20.8	M 1
	9.5ft	IW	Infiltration Weeper	25	M 2
	19.2ft	IW	Infiltration Weeper	44.4	M 2
	19.2ft	MGO	Miscellaneous General Observation	44.4	S 0





Code: **MGO**
Description: **Miscellaneous General Observation**

Distance: **0ft**
Structural Grade: **0**
O&M Grade: **0**
Clock Start/From:
Clock To:
1st Value:
2nd Value:
Value Percent:
Continuous Index:
Within Eight" of Joint: **False**
Remarks: **Start inspection**



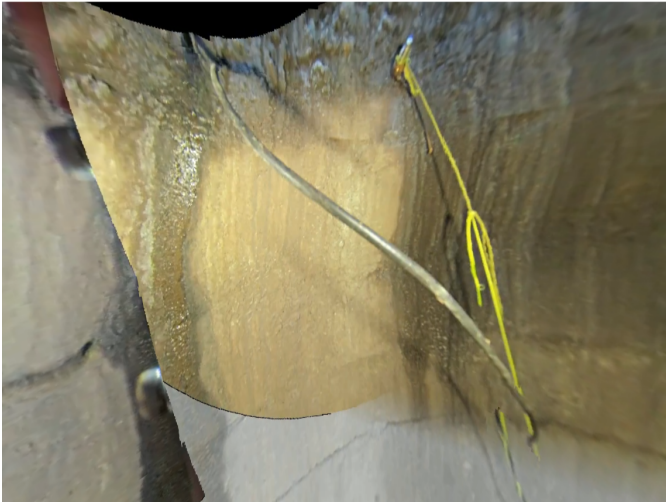
Code: **IS**
Description: **Infiltration Stain**

Distance: **0ft**
Structural Grade: **0**
O&M Grade: **1**
Clock Start/From: **12**
Clock To: **12**
1st Value:
2nd Value:
Value Percent:
Continuous Index: **S01**
Within Eight" of Joint: **False**
Remarks:



Code: **SRI**
Description: **Surface Damage Roughness Increased**

Distance: **0ft**
Structural Grade: **1**
O&M Grade: **0**
Clock Start/From: **12**
Clock To: **12**
1st Value:
2nd Value:
Value Percent:
Continuous Index:
Within Eight" of Joint: **False**
Remarks:



Code: **IW**
Description: **Infiltration Weeper**

Distance: **1ft**
Structural Grade: **0**
O&M Grade: **2**
Clock Start/From: **4**
Clock To:
1st Value:
2nd Value:
Value Percent:
Continuous Index:
Within Eight" of Joint: **False**
Remarks:



Code: **IS**
Description: **Infiltration Stain**

Distance: **7ft**
Structural Grade: **0**
O&M Grade: **1**
Clock Start/From: **12**
Clock To: **12**
1st Value:
2nd Value:
Value Percent:
Continuous Index: **F01**
Within Eight" of Joint: **False**
Remarks:



Code: **IW**
Description: **Infiltration Weeper**

Distance: **9ft**
Structural Grade: **0**
O&M Grade: **2**
Clock Start/From: **6**
Clock To: **8**
1st Value:
2nd Value:
Value Percent:
Continuous Index: **S02**
Within Eight" of Joint: **False**
Remarks:



Code: **IW**
Description: **Infiltration Weeper**

Distance: **19ft**
Structural Grade: **0**
O&M Grade: **2**
Clock Start/From: **6**
Clock To: **8**
1st Value:
2nd Value:
Value Percent:
Continuous Index: **F02**
Within Eight" of Joint: **False**
Remarks:



Code: **MGO**
Description: **Miscellaneous General Observation**

Distance: **19ft**
Structural Grade: **0**
O&M Grade: **0**
Clock Start/From:
Clock To:
1st Value:
2nd Value:
Value Percent:
Continuous Index:
Within Eight" of Joint: **False**
Remarks: **End inspection**