

R-035C

A CUSHNET AVE
New Bedford

Inspection Status: Remote Inspection
Inspection Level: Level 2

	Quick	Index	Rating
Overall	1C00	1	20
Structural	1500	1	5
O&M	1B00	1	15

Project: | New Bedford 3D Regulator Inspections

Owner: New Bedford, MA

Customer: CDM Smith

MANHOLE

MH Use: Sanitary

Access Type: Manhole

Year Constructed:

Year Renewed:

Evidence of Surcharge: No

MEASUREMENTS

Rim to Invert: 10.1ft

Rim to Grade:

Grade to Invert: 10.1ft

Rim to Grade Exposed:

Northing:

Easting:

Elevation:

Vertical Datum:

GPS Accuracy:

Additional Information:

COVER

Type: Solid

Shape: Circular

Size: 32"

Size Width:

Center Cover Size:

Cover Material: Cast Iron

Hole Diameter:

Hole Number:

Bearing Surface Diameter: 34"

Bearing Surface Width: 1"

Cover/Frame Fit: Good

Cover Condition: Sound

COVER INSERT

Insert Type: None

Insert Condition:

COVER ADJUSTMENT RING

Ring Type: Solid

Ring Material: Cast Iron

Ring Condition: Sound

Ring Height:

FRAME

Frame Material: Cast Iron

Bearing Surface Width: 1"

Bearing Surface Depth: 6"

Clear Opening Diameter: 30"

Clear Opening Width: 30"

Frame Depth:

Offset Distance:

Seal Condition: Sound

Seal Inflow: None

Frame Condition: Sound



CHIMNEY

Chimney Present: Yes

Chimney Depth: 2.5ft

Clear Opening:

Chimney I/I:

First Material: Concrete (precast)

Second Material:

Lining Interior:

Lining Exterior:

Chimney Condition:

CONE

Cone Depth:

Cone Type: Not Present

Clear Opening:

First Material:

Second Material:

Lining Interior:

Lining Exterior:

Cone Condition:

WALL

Wall Diameter:

Wall Width:

Wall Depth: 9.3ft

First Material: Concrete (precast)

Second Material:

Lining Interior:

Lining Exterior:

Wall Condition:

BENCH

Bench Present: Yes

Material: Concrete (precast)

Lining:

Bench Condition:

CHANNEL

Channel Present: Yes

Material: Concrete (precast)

Type: Pipe

Exposure: Fully Opened

Channel Condition:

STEP

Number: 0

Material:

PIPE CONNECTION INFORMATION

Pipe No.	Clock	Rim to Inv.	Direction	Material	Shape	Height	Width	Cond.	Seal Cond.	Pipe Type	Struct. ID	Comments
1	6	12.3"	In	Concrete Pipe (non-reinforced)	Circular	32"		Sound	Sound	Gravity Connection		Invert not visible
2	9	12.3"	Out	Concrete Pipe (non-reinforced)	Rectangular	36"	76"	Sound	Sound	Gravity Connection		Invert not visible
3	12	12.3"	Out	Concrete Pipe (non-reinforced)	Rectangular	6"	51"	Sound	Sound	Gravity Connection		Invert not visible

GENERAL INFORMATION

Surveyed By:

Reviewed By: M. Bierman

Weather:

Purpose of Survey: Routine assessment

Certificate Number: U0219070304856

Reviewer Number: P0035145122021

Precleaning: No Pre-Cleaning

PO Number:

Media Label:

Date & Time 2023-12-15

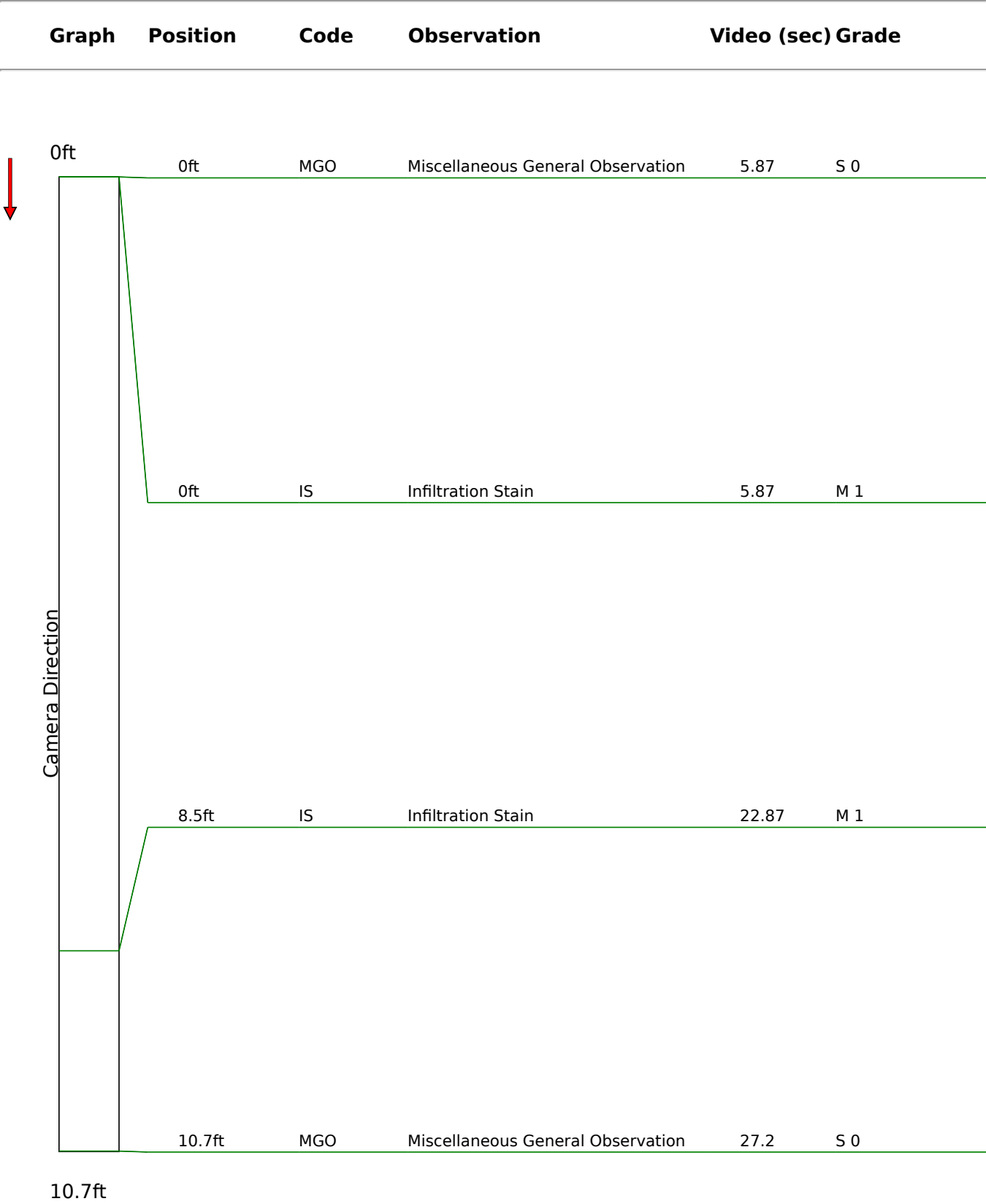
Sheet No.:

Date Cleaned:

Work Order:

Consequence of Failure:

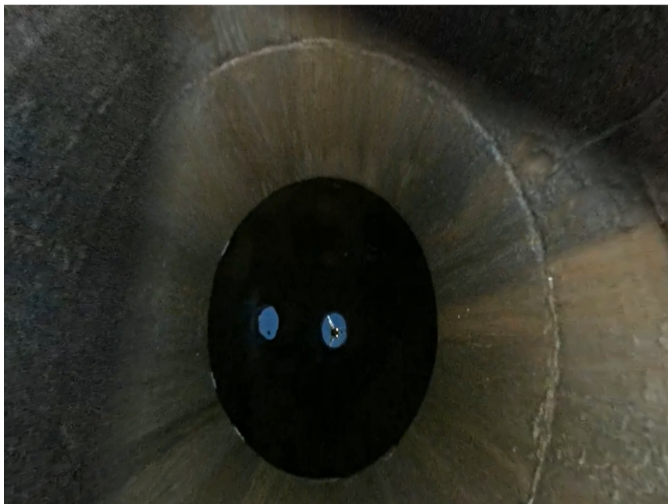
Condition Report





Code: **MGO**
Description: **Miscellaneous General Observation**

Distance: **0ft**
Structural Grade: **0**
O&M Grade: **0**
Clock Start/From:
Clock To:
1st Value:
2nd Value:
Value Percent:
Continuous Index:
Within Eight" of Joint: **False**
Remarks: **Start inspection**



Code: **IS**
Description: **Infiltration Stain**

Distance: **0ft**
Structural Grade: **0**
O&M Grade: **1**
Clock Start/From: **12**
Clock To: **12**
1st Value:
2nd Value:
Value Percent:
Continuous Index: **S01**
Within Eight" of Joint: **False**
Remarks:



Code: **IS**
Description: **Infiltration Stain**

Distance: **8ft**
Structural Grade: **0**
O&M Grade: **1**
Clock Start/From: **12**
Clock To: **12**
1st Value:
2nd Value:
Value Percent:
Continuous Index: **F01**
Within Eight" of Joint: **False**
Remarks:



Code: **MGO**
Description: **Miscellaneous General Observation**

Distance: **10ft**
Structural Grade: **0**
O&M Grade: **0**
Clock Start/From:
Clock To:
1st Value:
2nd Value:
Value Percent:
Continuous Index:
Within Eight" of Joint: **False**
Remarks: **End inspection**

