

R-032B

S 2ND ST
New Bedford

Inspection Status: Remote Inspection
Inspection Level: Level 2

	Quick	Index	Rating
Overall	231B	1.1	24
Structural	2318	1.3	14
O&M	1A00	1	10

Project: | New Bedford 3D Regulator Inspections

Owner: New Bedford, MA

Customer: CDM Smith

MANHOLE

MH Use: Sanitary

Access Type: Manhole

Year Constructed:

Year Renewed:

Evidence of Surcharge: No

MEASUREMENTS

Rim to Invert: 8.5ft

Rim to Grade:

Grade to Invert: 8.5ft

Rim to Grade Exposed:

Northing:

Easting:

Elevation:

Vertical Datum:

GPS Accuracy:

Additional Information:

COVER

Type: Gasketed

Shape: Circular

Size: 26"

Size Width:

Center Cover Size:

Cover Material: Cast Iron

Hole Diameter: <= 1/2 inch
(10mm)

Hole Number: 0

Bearing Surface Diameter: 28"

Bearing Surface Width: 1"

Cover/Frame Fit: Good

Cover Condition: Sound

COVER INSERT

Insert Type: None

Insert Condition:

COVER ADJUSTMENT RING

Ring Type: Solid

Ring Material: Cast Iron

Ring Condition: Sound

Ring Height:

FRAME

Frame Material: Cast Iron

Bearing Surface Width: 1"

Bearing Surface Depth: 9"

Clear Opening Diameter: 24"

Clear Opening Width: 24"

Frame Depth:

Offset Distance:

Seal Condition: Sound

Seal Inflow: None

Frame Condition: Sound



CHIMNEY

Chimney Present: Yes	Chimney I/I:	Lining Interior:
Chimney Depth: 3.2ft	First Material: Brick	Lining Exterior:
Clear Opening:	Second Material:	Chimney Condition:

CONE

Cone Depth:	First Material:	Lining Exterior:
Cone Type: Not Present	Second Material:	Cone Condition:
Clear Opening:	Lining Interior:	

WALL

Wall Diameter:	First Material: Concrete (precast)	Lining Exterior:
Wall Width:	Second Material:	Wall Condition:
Wall Depth: 4.5ft	Lining Interior:	

BENCH

Bench Present: Yes	Lining:
Material: Concrete (precast)	Bench Condition:

CHANNEL

Channel Present: No	Type:	Channel Condition:
Material:	Exposure:	

STEP

Number: 3	Material: Metal
------------------	------------------------

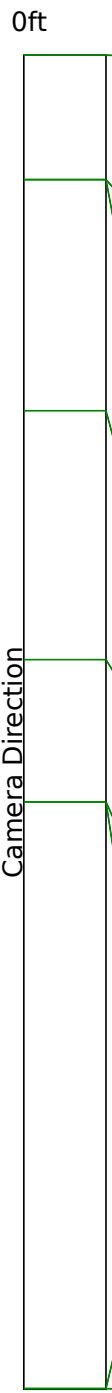
PIPE CONNECTION INFORMATION

Pipe No.	Clock	Rim to Inv.	Direction	Material	Shape	Height	Width	Cond.	Seal Cond.	Pipe Type	Struct. ID	Comments
1	6	8.5"	In	Concrete Pipe (non-reinforced)	Circular	24"		Sound	Sound	Gravity Connection		
2	9	8.5"	Out	Concrete Pipe (non-reinforced)	Circular	30"		Sound	Sound	Gravity Connection		
3	12	5"	In	Vitrified Clay Pipe	Circular	4"		Sound	Sound	Gravity Connection		
4	3	8.5"	Out	Concrete Pipe (non-reinforced)	Circular	25"		Sound	Sound	Gravity Connection		

GENERAL INFORMATION

Surveyed By:	Reviewer Number: P0035145122021	Sheet No.:
Reviewed By: M. Bierman	Precleaning: No Pre-Cleaning	Date Cleaned:
Weather:	PO Number:	Work Order:
Purpose of Survey: Routine assessment	Media Label:	Consequence of Failure:
Certificate Number: U0219070304856	Date & Time 2023-12-14	

Condition Report

Graph	Position	Code	Observation	Video (sec)	Grade
	0ft	MGO	Miscellaneous General Observation	4.8	S 0
	0.7ft	SRI	Surface Damage Roughness Increased	6.2	S 1
	0.7ft	IS	Infiltration Stain	6.2	M 1
	2ft	OBZ	Obstruction Other	8.8	S 0
	3.4ft	IS	Infiltration Stain	11.6	M 1
	4.2ft	SRI	Surface Damage Roughness Increased	13.2	S 1
	4.2ft	SAV	Surface Damage Aggregate Visible	13.2	S 2
	7.5ft	SAV	Surface Damage Aggregate Visible	19.73	S 2
	7.5ft	MGO	Miscellaneous General Observation	19.73	S 0





Code: **MGO**
Description: **Miscellaneous General Observation**

Distance: **0ft**
Structural Grade: **0**
O&M Grade: **0**
Clock Start/From:
Clock To:
1st Value:
2nd Value:
Value Percent:
Continuous Index:
Within Eight" of Joint: **False**
Remarks: **Start inspection**



Code: **SRI**
Description: **Surface Damage Roughness Increased**

Distance: **0ft**
Structural Grade: **1**
O&M Grade: **0**
Clock Start/From: **12**
Clock To: **12**
1st Value:
2nd Value:
Value Percent:
Continuous Index: **S01**
Within Eight" of Joint: **False**
Remarks:



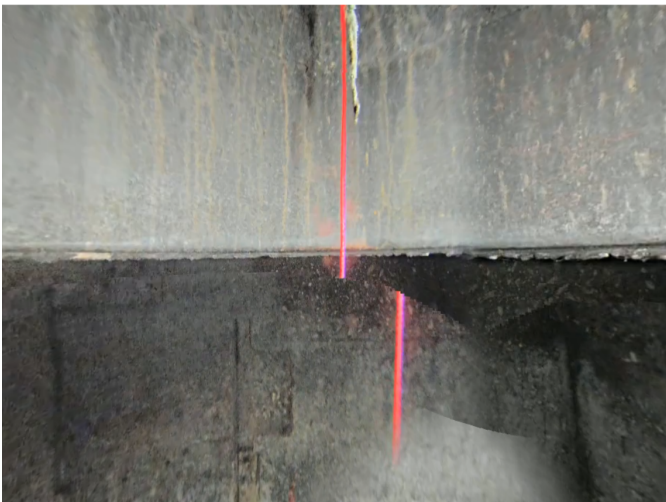
Code: **IS**
Description: **Infiltration Stain**

Distance: **0ft**
Structural Grade: **0**
O&M Grade: **1**
Clock Start/From: **12**
Clock To: **12**
1st Value:
2nd Value:
Value Percent:
Continuous Index: **S02**
Within Eight" of Joint: **False**
Remarks:



Code: **OBZ**
Description: **Obstruction Other**

Distance: **2ft**
Structural Grade: **0**
O&M Grade: **0**
Clock Start/From: **12**
Clock To:
1st Value:
2nd Value:
Value Percent: **10**
Continuous Index:
Within Eight" of Joint: **False**
Remarks: **Rope/wire**



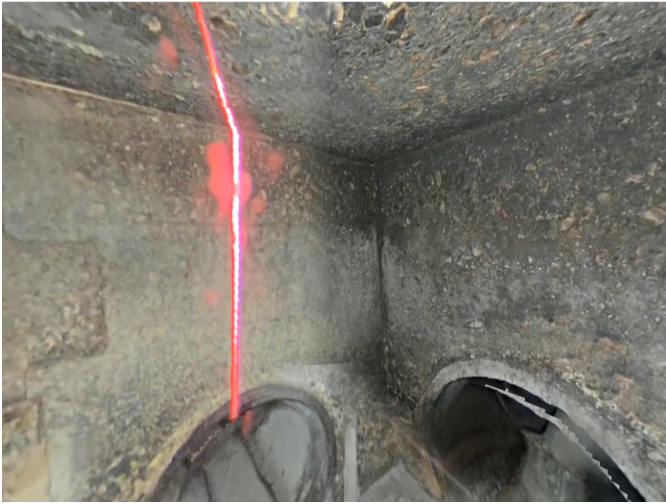
Code: **IS**
Description: **Infiltration Stain**

Distance: **3ft**
Structural Grade: **0**
O&M Grade: **1**
Clock Start/From: **12**
Clock To: **12**
1st Value:
2nd Value:
Value Percent:
Continuous Index: **F02**
Within Eight" of Joint: **False**
Remarks:



Code: **SRI**
Description: **Surface Damage
Roughness Increased**

Distance: **4ft**
Structural Grade: **1**
O&M Grade: **0**
Clock Start/From: **12**
Clock To: **12**
1st Value:
2nd Value:
Value Percent:
Continuous Index: **F01**
Within Eight" of Joint: **False**
Remarks:



Code: **SAV**
Description: **Surface Damage
Aggregate Visible**

Distance: **4ft**
Structural Grade: **2**
O&M Grade: **0**
Clock Start/From: **12**
Clock To: **12**
1st Value:
2nd Value:
Value Percent:
Continuous Index: **S03**
Within Eight" of Joint: **False**
Remarks:



Code: **SAV**
Description: **Surface Damage
Aggregate Visible**

Distance: **7ft**
Structural Grade: **2**
O&M Grade: **0**
Clock Start/From: **12**
Clock To: **12**
1st Value:
2nd Value:
Value Percent:
Continuous Index: **F03**
Within Eight" of Joint: **False**
Remarks:



Code: **MGO**
Description: **Miscellaneous General
Observation**

Distance: **7ft**
Structural Grade: **0**
O&M Grade: **0**
Clock Start/From:
Clock To:
1st Value:
2nd Value:
Value Percent:
Continuous Index:
Within Eight" of Joint: **False**
Remarks: **End inspection**



