

R-004I

DAVID ST
New Bedford

Inspection Status: Remote Inspection
Inspection Level: Level 2

	Quick	Index	Rating
Overall	211A	1.1	13
Structural	2115	1.2	7
O&M	1600	1	6

Project: | New Bedford 3D Regulator Inspections

Owner: | New Bedford, MA

Customer: CCDM Smith

MANHOLE

MH Use: | Sanitary

Access Type: Manhole

Year Constructed:

Year Renewed:

Evidence of Surcharge: No

MEASUREMENTS

Rim to Invert: 8.8ft

Rim to Grade:

Grade to Invert: 8.8ft

Rim to Grade Exposed:

Northing:

Easting:

Elevation:

Vertical Datum:

GPS Accuracy:

Additional Information:

COVER

Type: Vented

Shape: Circular

Size: 24"

Size Width:

Center Cover Size:

Cover Material: Cast Iron

Hole Diameter: <= 1/2 inch
(10mm)

Hole Number: 32

Bearing Surface Diameter: 24"

Bearing Surface Width: 2"

Cover/Frame Fit: Good

Cover Condition: Sound

COVER INSERT

Insert Type: None

Insert Condition:

COVER ADJUSTMENT RING

Ring Type: Solid

Ring Material: Cast Iron

Ring Condition: Sound

Ring Height:

FRAME

Frame Material: Cast Iron

Bearing Surface Width: 2"

Bearing Surface Depth: 9"

Clear Opening Diameter:

Clear Opening Width: 22"

Frame Depth:

Offset Distance:

Seal Condition: Sound

Seal Inflow: None

Frame Condition: Sound



CHIMNEY

Chimney Present: Yes	Chimney I/I:	Lining Interior:
Chimney Depth: 0.5ft	First Material: Concrete (precast)	Lining Exterior:
Clear Opening:	Second Material:	Chimney Condition:

CONE

Cone Depth: 1.7ft	First Material: Brick	Lining Exterior:
Cone Type: Conical centered	Second Material:	Cone Condition:
Clear Opening:	Lining Interior:	

WALL

Wall Diameter:	First Material: Brick	Lining Exterior:
Wall Width:	Second Material:	Wall Condition:
Wall Depth: 4.6ft	Lining Interior:	

BENCH

Bench Present: Yes	Lining:
Material: Brick	Bench Condition:

CHANNEL

Channel Present: Yes	Type: Pipe	Channel Condition:
Material: Brick	Exposure: Fully Opened	

STEP

Number: 0	Material:
------------------	------------------

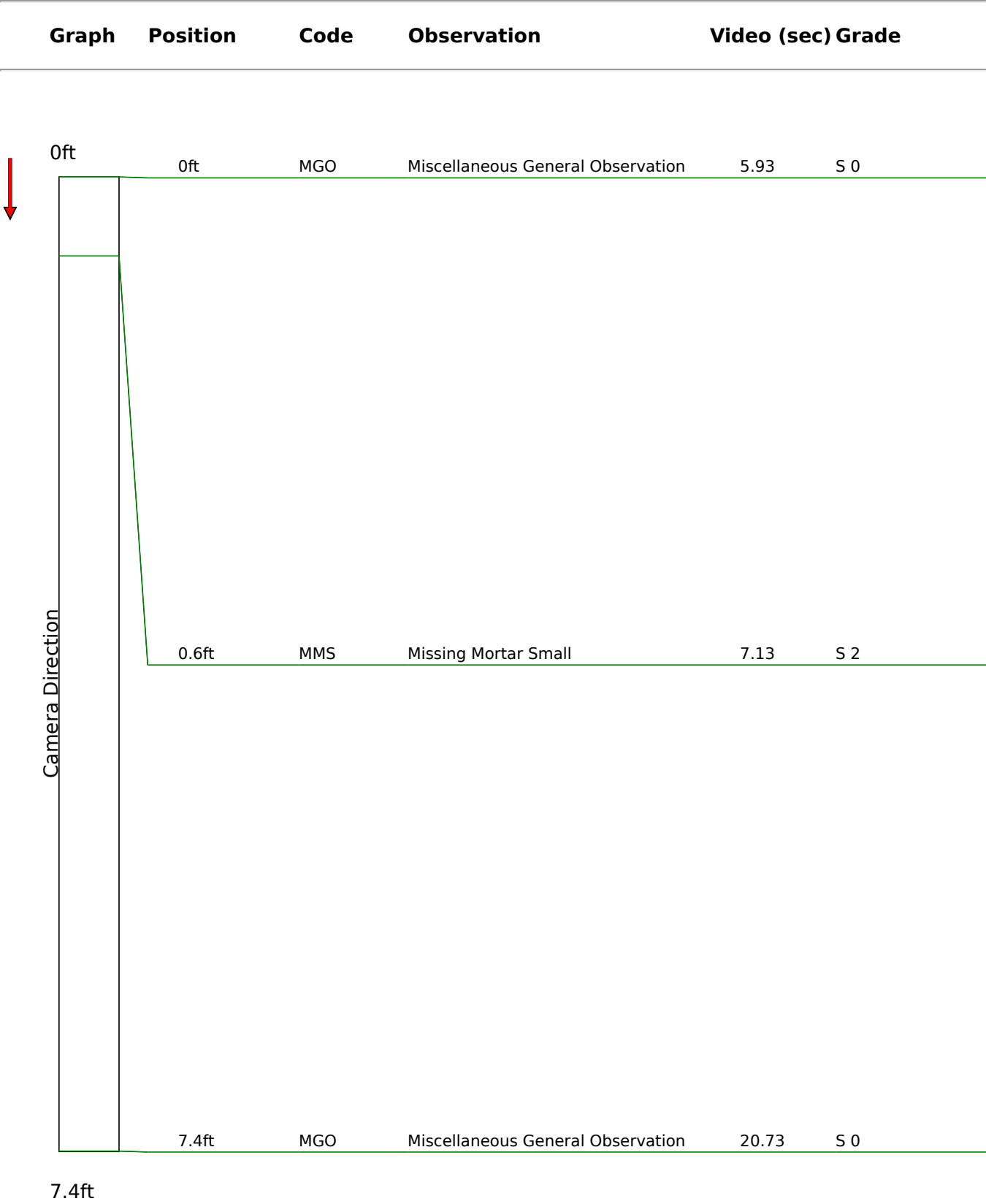
PIPE CONNECTION INFORMATION

Pipe No.	Clock	Rim to Inv.	Direction	Material	Shape	Height	Width	Cond.	Seal Cond.	Pipe Type	Struct. ID	Comments
1	6	7.8"	Out	Concrete Pipe (non-reinforced)	Circular	8"		Sound	Sound	Gravity Connection		
2	12	7.8"	In	Vitrified Clay Pipe	Circular	8"		Sound	Sound	Gravity Connection		
3	3	7.8"	In	Vitrified Clay Pipe	Circular	12"		Sound	Sound	Gravity Connection		

GENERAL INFORMATION

Surveyed By:	Reviewer Number: P0035145122021	Sheet No.:
Reviewed By: M. Bierman	Precleaning: No Pre-Cleaning	Date Cleaned:
Weather: Dry - No precipitation during survey	PO Number:	Work Order:
Purpose of Survey: Routine assessment	Media Label:	Consequence of Failure:
Certificate Number: U0219070304856	Date & Time 2023-12-11	

Condition Report





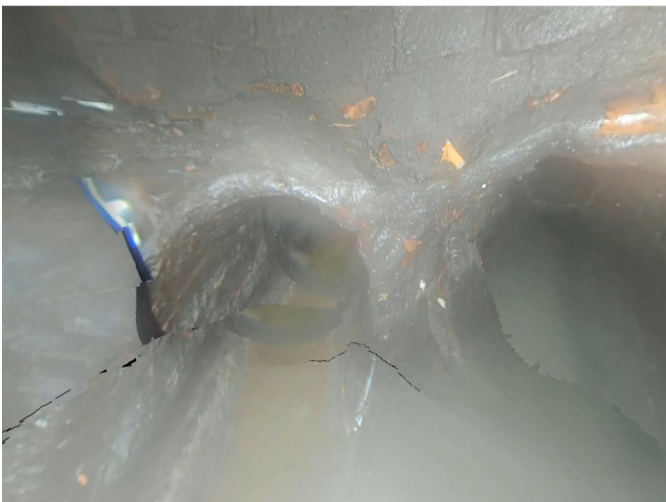
Code: **MGO**
Description: **Miscellaneous General Observation**

Distance: **0ft**
Structural Grade: **0**
O&M Grade: **0**
Clock Start/From:
Clock To:
1st Value:
2nd Value:
Value Percent:
Continuous Index:
Within Eight" of Joint: **False**
Remarks: **Start inspection**



Code: **MMS**
Description: **Missing Mortar Small**

Distance: **0ft**
Structural Grade: **2**
O&M Grade: **0**
Clock Start/From: **12**
Clock To: **12**
1st Value:
2nd Value:
Value Percent:
Continuous Index:
Within Eight" of Joint: **False**
Remarks:



Code: **MGO**
Description: **Miscellaneous General Observation**

Distance: **7ft**
Structural Grade: **0**
O&M Grade: **0**
Clock Start/From:
Clock To:
1st Value:
2nd Value:
Value Percent:
Continuous Index:
Within Eight" of Joint: **False**
Remarks: **End inspection**

