

R-004H

COVE RD
New Bedford

Inspection Status: Remote Inspection
Inspection Level: Level 2

	Quick	Index	Rating
Overall	311B	1.1	20
Structural	3118	1.2	11
O&M	1900	1	9

Project: | New Bedford 3D Regulator Inspections
Owner: New Bedford, MA
Customer: CDM Smith

MANHOLE

MH Use: Sanitary
Access Type: Manhole
Year Constructed:
Year Renewed:
Evidence of Surcharge: No

MEASUREMENTS

Rim to Invert: 9.9ft
Rim to Grade:
Grade to Invert: 9.9ft
Rim to Grade Exposed:
Northing:
Easting:
Elevation:
Vertical Datum:
GPS Accuracy:
Additional Information:

COVER

Type: Solid
Shape: Circular
Size: 24"
Size Width:
Center Cover Size:
Cover Material: Cast Iron
Hole Diameter:
Hole Number:
Bearing Surface Diameter: 26"
Bearing Surface Width: 1"
Cover/Frame Fit: Good
Cover Condition: Sound

COVER INSERT

Insert Type: None
Insert Condition:

COVER ADJUSTMENT RING

Ring Type: Solid
Ring Material: Cast Iron
Ring Condition: Sound
Ring Height:

FRAME

Frame Material: Cast Iron
Bearing Surface Width: 1"
Bearing Surface Depth: 9"
Clear Opening Diameter: 22"
Clear Opening Width: 22"
Frame Depth:
Offset Distance:
Seal Condition: Sound
Seal Inflow: None
Frame Condition: Sound



CHIMNEY

Chimney Present: Yes	Chimney I/I:	Lining Interior:
Chimney Depth: 1.3ft	First Material: Concrete (precast)	Lining Exterior:
Clear Opening:	Second Material:	Chimney Condition:

CONE

Cone Depth: 3ft	First Material: Concrete (precast)	Lining Exterior:
Cone Type: Conical centered	Second Material:	Cone Condition:
Clear Opening:	Lining Interior:	

WALL

Wall Diameter:	First Material: Brick	Lining Exterior:
Wall Width:	Second Material:	Wall Condition:
Wall Depth: 5ft	Lining Interior:	

BENCH

Bench Present: Partial - One side only	Lining:
Material: Concrete (precast)	Bench Condition:

CHANNEL

Channel Present: Yes	Type: Pipe	Channel Condition:
Material: Brick	Exposure: Partially Opened	

STEP

Number: 0	Material:
------------------	------------------

PIPE CONNECTION INFORMATION

Pipe No.	Clock	Rim to Inv.	Direction	Material	Shape	Height	Width	Cond.	Seal Cond.	Pipe Type	Struct. ID	Comments
1	6	9.2"	Out	Concrete Pipe (non-reinforced)	Circular	24"		Sound	Sound	Gravity Connection		
2	3	9.2"	In	Brick	Circular	75"		Sound	Sound	Gravity Connection		
3	9	9.2"	Out	Brick	Circular	75"		Sound	Sound	Gravity Connection		

GENERAL INFORMATION

Surveyed By:	Reviewer Number: P0035145122021	Sheet No.:
Reviewed By: M. Bierman	Precleaning: No Pre-Cleaning	Date Cleaned:
Weather:	PO Number:	Work Order:
Purpose of Survey: Routine assessment	Media Label:	Consequence of Failure:
Certificate Number: U0219070304856	Date & Time 2023-12-14	

Condition Report

Graph	Position	Code	Observation	Video (sec)	Grade
<p>Camera Direction</p>	0.1ft	MGO	Miscellaneous General Observation	6.07	S 0
	0.5ft	SRI	Surface Damage Roughness Increased	6.87	S 1
	0.5ft	IS	Infiltration Stain	6.87	M 1
	3.2ft	CM	Crack Multiple	12.27	S 3
	3.2ft	SRI	Surface Damage Roughness Increased	12.27	S 1
	3.2ft	IS	Infiltration Stain	12.27	M 1
	8.6ft	MGO	Miscellaneous General Observation	23	S 0





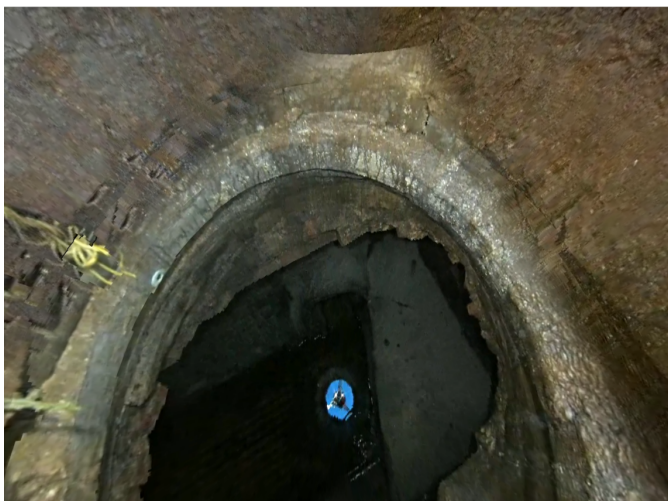
Code: **MGO**
Description: **Miscellaneous General Observation**

Distance: **0ft**
Structural Grade: **0**
O&M Grade: **0**
Clock Start/From:
Clock To:
1st Value:
2nd Value:
Value Percent:
Continuous Index:
Within Eight" of Joint: **False**
Remarks: **Start inspection**



Code: **SRI**
Description: **Surface Damage Roughness Increased**

Distance: **0ft**
Structural Grade: **1**
O&M Grade: **0**
Clock Start/From: **12**
Clock To: **12**
1st Value:
2nd Value:
Value Percent:
Continuous Index: **S01**
Within Eight" of Joint: **False**
Remarks:



Code: **IS**
Description: **Infiltration Stain**

Distance: **0ft**
Structural Grade: **0**
O&M Grade: **1**
Clock Start/From: **12**
Clock To: **12**
1st Value:
2nd Value:
Value Percent:
Continuous Index: **S02**
Within Eight" of Joint: **False**
Remarks:



Code: **CM**
Description: **Crack Multiple**

Distance: **3ft**
Structural Grade: **3**
O&M Grade: **0**
Clock Start/From: **12**
Clock To: **12**
1st Value:
2nd Value:
Value Percent:
Continuous Index:
Within Eight" of Joint: **False**
Remarks:



Code: **SRI**
Description: **Surface Damage
Roughness Increased**

Distance: **3ft**
Structural Grade: **1**
O&M Grade: **0**
Clock Start/From: **12**
Clock To: **12**
1st Value:
2nd Value:
Value Percent:
Continuous Index: **F01**
Within Eight" of Joint: **False**
Remarks:



Code: **IS**
Description: **Infiltration Stain**

Distance: **3ft**
Structural Grade: **0**
O&M Grade: **1**
Clock Start/From: **12**
Clock To: **12**
1st Value:
2nd Value:
Value Percent:
Continuous Index: **F02**
Within Eight" of Joint: **False**
Remarks:



Code: **MGO**
Description: **Miscellaneous General Observation**

Distance: **8ft**
Structural Grade: **0**
O&M Grade: **0**
Clock Start/From:
Clock To:
1st Value:
2nd Value:
Value Percent:
Continuous Index:
Within Eight" of Joint: **False**
Remarks: **End inspection**

